

Identification of a pollen-specific sucrose transporter-like protein NtSUT3 from tobacco

Remi Lemoine^{a,b,*}, Lukas Bürkle^b, Laurence Barker^b, Soulaïman Sakr^a, Christina Kühn^b,
Matthieu Regnacq^a, Cecile Gaillard^a, Serge Delrot^a, Wolf B. Frommer^b

^aLaboratoire de Biochimie et Physiologie Végétales, ESA CNRS 6161, Bâtiment Botanique, 40, Avenue du Recteur Pineau, F-86022 Poitiers Cedex, France

^bPlant Physiology, Zentrum für MolekularBiologie der Pflanzen ZMBP, Auf der Morgenstelle 1, D-72076 Tübingen, Germany

Received 31 May 1999

Abstract Pollen cells are symplasmically isolated during maturation and germination. Pollen therefore needs to take up nutrients via membrane carriers. Physiological measurements on pollen indicate sucrose transport in the pollen tube. A cDNA encoding a pollen-specific sucrose transporter-like protein *NtSUT3* was isolated from a tobacco pollen cDNA library. *NtSUT3* expression is detected only in pollen and is restricted to late pollen development, pollen germination and pollen tube growth. Altogether these data indicate that pollen is supplied not only with glucose, but also with sucrose through a specific sucrose transporter. The respective contribution of each transport pathway may change during pollen tube growth.

© 1999 Federation of European Biochemical Societies.

Key words: Sucrose transport; Pollen; Tobacco

1. Introduction

Plants organs can be classified as either source (autotrophic) or sink (heterotrophic) organs, depending on their ability to perform sufficient photosynthesis to meet their need for energy and carbon skeletons. Sink organs rely on the supply of photosynthates (mainly sucrose) delivered by the phloem sap. Sucrose entry in the phloem cells of source organs has been well documented in the last years. In species transporting sucrose as the major photosynthate, sucrose enters phloem cells from the apoplasmic compartment. Sucrose molecules cross the plasma membrane of phloem cells through specific carriers. Cloning of the SUT1 gene encoding sucrose carrier by yeast complementation [1,2] was the basis for identifying sucrose carriers in other plant species [3–5]. Those carriers work as proton/sucrose cotransporters and have been localized to the phloem, either in companion cells or in sieve elements [6,7].

However, the exit of sucrose from phloem cells and subsequent import into sink organs is less clearly understood. One of the main reasons is that no general mechanism seems to describe all the different situations encountered among species (apoplastic vs. symplastic unloading; sucrose vs. hexoses as sugars taken up in sink cells in case of apoplastic unloading [8]).

In several cases, expression of sucrose transporters has also been reported in sinks [2,5,9–13]. However, in all cases, ex-

pression of the corresponding carriers was also detected in source leaves. Apoplasmically unloaded sucrose can also be cleaved by cell wall invertases and the resulting hexoses taken up by sink cells. Corresponding hexose carriers were cloned from a number of species [14] and localized mainly to sink organs. The third pathway is the symplasmic unloading of sucrose through plasmodesmata. Recent experiments with fluorescent dyes evidenced open symplasmic connections between the phloem and surrounding cells in specific sinks [15–17]. These different data illustrate the complexity of sugar movement in sink organs.

However, in the case of the male gametophyte (pollen) of higher plants, no symplasmic connections with the surrounding tissues remain after microspores are released from the tetrad. This indicates that pollen grain and tube develop as symplasmically isolated organs. This isolation necessitates the presence of carriers to take up nutrients into the pollen. Surprisingly, the mechanisms of nutrient uptake is not known at the present time. Based on physiological data, the presence of a proton/sucrose mechanism in the pollen tube of the lily was suggested [18] but some recent data report on the cloning of pollen-specific hexose transporters in *Arabidopsis* (*AtSTP2* [19]) and petunia (*pmt1* [20]). Therefore the form of carbon uptake (sucrose vs. hexose) in the pollen is not clear at the present time.

In the following, the uptake of sucrose during pollen germination is investigated and we report the identification of *NtSUT3*, a cDNA encoding a sucrose transporter-like protein specifically expressed in the pollen of tobacco plants.

2. Materials and methods

2.1. Plant material

Tobacco plants (*Nicotiana tabacum* cv. Samsun NN) were grown in 25 cm diameter pots containing soil in a 16 h light/8 h dark cycle in a greenhouse. Plants were watered daily and supplemented three times a week with a 0.1% (w/v) solution of Peter Professional (20+20+20, Scotts Europe, The Netherlands). Pollen grains were harvested twice a day from mature dehiscent anthers: pollen was separated from anthers by vortexing in an Eppendorf tube, frozen in liquid nitrogen and stored at –80°C until use.

2.2. In vitro pollen germination and sucrose uptake experiments

Pollen grains were germinated on 20 ml of the medium described in [21]. For some experiments, sucrose in the medium was replaced with glucose or glucose+fructose. At selected times, germinated pollen were separated from ungerminated ones by filtration on a 80 µm nylon mesh (Millipore, St Quentin en Yvelines, France). Germinated pollen were rinsed with 3×50 ml of a germination medium where sorbitol replaced sucrose and polyethylene glycol (uptake medium). The collected germinated pollen were carefully resuspended in 4 ml of uptake medium. For uptake studies, 0.4 ml of resuspended pollen was incu-

*Corresponding author. Fax: (33) 5 49 45 41 86.
E-mail: remi.lemoine@campus.univ-poitiers.fr

Table 1

Effect of sugar composition on percent germination of tobacco pollen

Sugar in the medium	Amount (% w/v)	Concentration (mM)	Germination (% of germinating pollen)
Sucrose	5	146	78 ± 11
Glucose+fructose	2.5 ± 2.5	139 ± 139	66 ± 12
Glucose+fructose	1.25 ± 1.25	69 ± 69	47 ± 10
Glucose	5	277	22 ± 10

The medium used is as described in [21] except for the sugar composition. All measurements were made after 2 h germination and repeated twice (mean ± S.D.) on independent batches of pollen.

bated at 28°C and supplemented with 8 µl of a 50 mM [U-¹⁴C]sucrose solution (Amersham, Les Ulis, France) to give a 1 mM sucrose solution (final specific activity: 1.34 MBq/mmol). After 1 min, germinated pollen were separated from the incubation medium by vacuum filtration on glass fiber filters (Sartorius, Palaiseau, France) and rinsed with 3 × 4 ml of chilled incubation medium without sucrose. Invertase activity measurements were run according to [22].

2.3. Isolation of a genomic clone for *SUT3*

A genomic library from *Nicotiana plumbaginifolia* in λDASH II (Stratagene, La Jolla, CA, USA) was screened with the tobacco *NtSUT1* as probe [5] at reduced stringency (hybridization in a buffer containing 25% formamide at 42°C, washing in 2 × SSC at 56°C). A hybridizing clone (*NpSUT3*) was purified and analyzed further.

2.4. RNA isolation, cDNA library construction and Northern blot analysis

RNA was isolated from the different plant organs according to the procedure described in [23]. Germinated pollen were separated from ungerminated pollen grains as described above. Pollen mRNA was prepared from 1 mg total pollen RNA using Dynabeads (Dynal, New York, NY, USA) as described in [5]. An oriented cDNA library was constructed using the UNI ZAP kit (Stratagene). The library contained a high proportion of recombinants with an average insert size of 1.45 kb. The library was plated (400 000 PFU) and hybridized to genomic *NpSUT3* under high stringency. Five strongly hybridizing cDNA clones were identified. All cDNAs were sequenced from the 5'-end and were shown to encode the same gene just differing in the length of the respective 5'-ends. The longest cDNA was sequenced completely on an ABI 310 (Perkin-Elmer, Weiterstadt, Germany). Since the sequence of *NpSUT3* was highly similar to the newly identified cDNA, it probably represents an ortholog and thus was named *NtSUT3*.

Northern analysis was carried out on Hybond N membranes (Amersham, Les Ulis, France) according to the manufacturer's protocol. Unless stated otherwise, 20 µg total RNA was separated on denaturing 1% agarose gels, transferred to a nylon membrane (Hybond N) and hybridized to a ³²P-labelled probe (a 1.1 kb *Eco*RI fragment of *NtSUT3*). Hybridization was done overnight at 65–68°C. The final wash was in 0.5 × SSC, 0.1% SDS for 20 min at 68°C. Detection was done on Hyperfilm β max (Amersham, Les Ulis, France) or by imaging (Instant Imager, Packard Instruments, Rungis, France).

3. Results

3.1. Germination of pollen and sucrose uptake

Because of the recent description of hexose carriers ex-

pressed in the pollen tube, the germination of tobacco pollen on different media was studied. Results in Table 1 were obtained by germinating pollen grains on the medium described in [24] where sucrose was replaced either by its cleavage products (glucose and fructose) or by glucose alone. As already noted [21] sucrose is the best sugar for in vivo germination of pollen. Glucose and fructose at the concentration expected if sucrose is completely cleaved by an invertase [20] were less efficient than sucrose alone (15% reduction). This was even more true when total glucose and fructose were equimolar to sucrose (1.25+1.25%): the percent of germination dropped from 78 to 47%. Glucose alone was a very poor substrate for pollen germination and those pollen that germinated often had their pollen tube burst. This differs from the results obtained in petunia [20] where glucose was as good a substrate as sucrose.

Germination experiments indicated that sucrose was the best substrate, but this did not preclude that the cleavage products were taken up by growing pollen. Therefore, sucrose and hexose uptake was investigated into pollen germinated for 2 h (pollen is autotrophic due to stored products) and 8 h (pollen is heterotrophic). Sucrose and hexoses were taken up and uptake rates increased with time (Table 2). Increased uptake was paralleled by a large increase in cell wall invertase activity. The rather high uptake of fructose after 2 h germination has not been reported yet. But again, sucrose transport could have been a result of cleavage and subsequent hexose uptake, as those sugars were readily taken up. The following experiment was thus conducted: 1 mM [¹⁴C]sucrose was fed to pollen, alone or in the presence of either 10 mM sucrose or 10 mM glucose. The rationale was that, if sucrose is cleaved by an invertase before uptake, glucose would be more inhibitory than sucrose. In pollen germinated for 8 h, sucrose uptake was inhibited to 67% of control in the presence of 10 mM sucrose, and to 50% in the presence of 10 mM glucose. Reciprocally, glucose uptake was more inhibited by a 10-fold glucose excess (35%) than by a 10-fold sucrose excess (0%). It was therefore concluded that part of the sucrose present in the medium was taken up without cleavage. To get more direct evidence of sucrose uptake, the transporter involved was cloned.

Table 2

Uptake of 1 mM radiolabelled sucrose, glucose and fructose in tobacco pollen germinated for 2 and 8 h

	2 h germination	8 h germination
Sucrose uptake (nmol/mg protein/min)	5.6 ± 0.6	12.8 ± 1.4
Glucose uptake (nmol/mg protein/min)	8.0 ± 0.5	9.2 ± 1.6
Fructose uptake (nmol/mg protein/min)	8.6 ± 0.9	N.D.
Acid invertase activity (µmol sucrose cleaved/mg protein/min)	19.5 ± 1.5	47.0 ± 2.7

The corresponding values for acid invertase activity are indicated. Experiments were run twice (mean ± S.D.) as described in Section 2. N.D.: not determined.

AGG CAA TCC AGA AAA GAC AAG AGG GAA AAA GCA AGA GAT CAA GAA CTG GAG AAG
10 19 28 37 46 55

AGA AAG AGC TTT TCT TTC TTT TCT TCT GGC GCT CTA CAA GGG CGC CAG AGG TCT TTT
64 73 82 91 100 109

TTC CTC TTA GAG TTA TTA ATC ATT TTG AAA AAG GAA AAA AAG AAG GAA GAG AGA ACA
124 133 142 151 160 169

AGA ACA TCT CCT CTC TCT GTC TAT TAC TAC GTT TTT CCT TTT TCA GTA CCT TAA ATG ACC
184 193 202 211 220 229

K S Y I T M E S G S M E M
AAG TCA TAC ATA ACT TAA ACA CGG ATT GAT ATT TCA ATG GAG AGT GGT AGT AGT GAA ATG
244 253 262 271 280 289

K V Q Q P Y L A V P V L P P R W K I V M
AAA GTT CAA CAA CCA TAT TTA GCT GTT CCA GTA CTG CCA CCA CCA TGG AAG ATA GTA ATG
304 313 322 331 340 349

V A S I A A G V Q F G W A L Q L S L L T
GTG GCC TCC ATA GCT GCT GGA GTT CAA TGG GCA CTT CAG CTC TCT TTT TTA TCT
364 373 382 391 400 409

P Y L Q L L G I P H R Y A S I I W L C G
CCT TAT TTA CAG CTA CTT GGA ATT CCA CAC AGA TAT GCT CTA ATT ATA TGG CTT TCT GGA
424 433 442 451 460 469

P I S G M I V Q P A G V G Y L S D N L S S
CCT ATT TTA GGA ATG ATT GTT CAG GGT CGG GTT GAT TAT TTA AGT GAC AAC CTC TCC TCC
484 493 502 511 520 529

T F G R R R P P F I A A G S S L V A V A V
ACC TTT GGC CGC CGT CGG CTT TCT ATT GCC GGC GCC TCC TCC CTT GTC GCC GTC GTC
544 553 562 571 580 589

I F I G F A A D I G H A F G D P L D T K K
ATC TTC ATT GGC TTT GCT GCT GAT ATT GGA CAT GCT TTT GGT GAT CCT CTT GAT TCA
604 613 622 631 640 649

T K P L G I I T F I V G F W Y L D V A N
ACT AAG CCC CTT GCT ATT ATT TTT ATC GTT GGG TTT TGG TAT CTT GAT GTC GCT AAC
664 673 682 691 700 709

N M L Q G P C R A F L A D L S G G K A C
AAC ATG TTA CAG GCT CGG TCC AGA GCA TTC TTG GCT GAT CTC TCC GGC GGG AAA GCC TGT
724 733 742 751 760 769

R I R T G Q S C Y A F F M A V G S I L G
CGG ATA AGC ACG GGA CAG TCT TCC TAC GCA TTT ATC ATG CGG GTG GGA AGC ATT GTC GGG
784 793 802 811 820 829

N A A G S Y S H L Y T I F P F T K T E A
AAC GCC GCC GGT CTA TAT TCT CAC GCT TAC ACC ATC TTC CCC TTT ACA AAG ACA GAA GCC
844 853 862 871 880 889

C G V Q C A N L K S C F L I S V V L L L
TGT GGT GTT CAA TGT GCA AAC CTA AAG AGT TGT TTT CTG TCA TCA GTA GTT TTA TTG CTC
904 913 922 931 940 949

T L T T L A L T A V D E K V L P Q K D H
ACT TTA ACA ACC TTA GCC TTA ACA GCT GTG GAT GAA AAA GTG CTG CCA CAG AAA GAT CAT
964 973 982 991 1000 1009

F I N S E Y L G S S G K K G G L L F F G
TTC ATC AAC AGT GAA TAT TTG GGT TCA TCA GGA AAA GGA GGA TTT TTA TTT TTT GGA
1024 1033 1042 1051 1060 1069

E M F E A L K H L P R S V W I L L M V T
GAG ATG TTT GAA GCT CTA AAG CAT TTT CCA AGA TCA TGG ATT CTT CTA ATG GTC ACA
1084 1093 1102 1111 1120 1129

A V N W I A W F P F T L Y G T D W M G K
GCT GTA AAC TGG ATT GCT TGG TTT CTA TTC ACC TTT TAT GGC ACT GAC TGG ATG GGC AAA
1144 1153 1162 1171 1180 1189

E G V Y G G R V R D G N L Y N K G V H A G
GAG GTA TAT GGG GGC AGA GTT AGG GAG AAT CTA TAC AAT AAA GGA GTA CAT GCA GGT
1204 1213 1222 1231 1240 1249

V F G L L L S S V V L C L M S L G V E C
GTA TTT GGG CTT CTG TTG AGC TCA GTG GTG CTA TGT TTA ATG TCA CTG GGA GTG GAG TGT
1264 1273 1282 1291 1300 1309

V G K W L G G A K R L W G I V N F I L A
GTT GGA AAG TGG CTA GGT GGT GCA AAA AGG CTA TGG GGG ATT GTC AAT TTC ATC TTG GCT
1324 1333 1342 1351 1360 1369

I C L A M T V F V T K H A D K S R R Y D
ATT TGC TTG GCC ATG ACT GTT TTT GTT CTA CCA AAG GCA GAC AAA TCA CGG CCA TAC GAC
1384 1393 1402 1411 1420 1429

G D C E L L P P D Q G V K I S A L L L N
GGC GAC GGC GAA CTT CTG CGG CGG GAT CAA GGT GTC AAG ATC GAT GCT TTT CTT CTT AAT
1444 1453 1462 1471 1480 1489

A V T G I P L A V L Y S I P F A M A S I
GCT GTT ACG GCA ATT CCT CTA GCA GTG CTT TAT AGC ATT CCA TTT GCT ATG GCA TCT ATA
1504 1513 1522 1531 1540 1549

Y S S N V G A G Q G L S Q G V I H L A I
TAT TCC AGT AAT GTT GGG GCA GGG CAA GGT CTA TCA CAA GGA GTT ATA AAT CTT GCA ATA
1564 1573 1582 1591 1600 1609

V V P Q T L V S I S G R P P D A L F G G
GTT GTC CCA CAG ACG TTA GTG TCA ATT AGT GGG AGG CCA TTT GAT GCA TTG TTC GGA GGA
1624 1633 1642 1651 1660 1669

G N L P A F V A G A V A A V S G I L A
GGG AAC TTG CGC GGT TTT GTG GCG GCA GCA GTT GCA GCT GCA GTG AGT GGT ATT TTG GCA
1684 1693 1702 1711 1720 1729

L T L L P S P T E P C Q T Y P H F R R C
CTC ACA TTG TCT CCT ACT GAG CCA TGC CAA ACA TAT CCC CAT TTT CGC GGT TGC
1744 1753 1762 1771 1780 1789

F P M T K Y W T S Q N K F
TTC CCA ATG ACA AAA TAC TGG ACA TCA CAA AAG AAG TTT TGA TCA CTA ATT TTT TTT CTT
1804 1813 1822 1831 1840 1849

TCT TTT TGT GCA TAA TGC AGA ATT AGA GTA ACA CAG TTT TGA AGG TTT TCC TGC CTT CTG
1864 1873 1882 1891 1900 1909

TTA ATG GTT GTA CAA AAT AAT GAT GTT AGA TCG TAC TAT TAG TAT ATG TTA TTT AAA AGG
1924 1933 1942 1951 1960 1969

CTG ACA GAG TCC AAT TCC TCT CAA AAA AAA AAA AAA AAA AAA A
1984 1993 2002 2011 2020

Fig. 1. DNA and deduced protein sequence of *NtSUT3*. The small upstream open reading frame is underlined.

3.2. Identification of *NtSUT3*

A genomic library from *N. plumbaginifolia* in λ DASH II (Stratagene, La Jolla, CA, USA) was screened with the tobacco *NtSUT1* cDNA as probe [5]. A positive clone (named *NpSUT3*) was further analyzed. A 1.4 kb *EcoRI* fragment hybridized with a *NtSUT1* probe in Southern blots [5]. Sequencing showed that this fragment was homologous, but not identical in the coding region to *NtSUT1*. A 300 bp fragment (*EcoRI/BglII* digest from *NpSUT3*) corresponding to a coding region showing homologies to the 5'-end of *NtSUT1* was used to screen a cDNA library from mature pollen grains of *N. tabacum* in λ ZAPII.

The clone called *NtSUT3* (accession number AF149981) has an open reading frame of 1560 bp (Fig. 1). The 5'-UTR contains a small open reading frame encoding a peptide of seven amino acids. *NtSUT3* shares 64.9% identity (amino acid level) with the sieve element sucrose transporter *NtSUT1* [5]. The first 130 amino acids of *NtSUT3* share 87% identity with *NpSUT3* confirming that they are orthologous proteins.

3.3. Heterologous expression of *NtSUT3* in yeast

To test for the function of *NtSUT3*, the cDNA was cloned as an *XbaI/XhoI* fragment into pMK195 [25] and the sucrose uptake-deficient yeast strain SUSY7 *ura3* was transformed (Bürkle, unpublished data). However, no difference in growth on sucrose could be detected when compared to control. To exclude that remaining flanking regions of the cDNA had a negative effect on expression in yeast, a PCR fragment lacking the small upstream translated region was cloned into pMK195 and into pDR195 [25]. The plasmids differ in the promoter used to drive the expression of the cloned cDNA (*ADHI* and *PMAl* promoters, respectively). However, no growth of the transformed yeast on sucrose could be seen. Thus, despite the very high sequence similarity with other members of the SUT family, no function in yeast could be demonstrated so far. *NtSUT3* thus has to be considered a putative sucrose transporter.

3.4. Organ-specific expression of *NtSUT3*

Preliminary results indicated a highly specific expression profile for *NtSUT3*: expression was only detected in flowers; no signal was observed in source leaves, sink leaves, stem or roots. To determine the localization of *NtSUT3* expression more precisely, the different organs of mature flowers were dissected and used for RNA extraction. The results presented in Fig. 2A show that expression of *NtSUT3* was detected in stamen and (to a much lower level) in total flower and corolla. Concerning the signal in corolla, it was certainly due to pollen contamination (see below). However, no hybridizing RNA was detected in source leaves as noted before, indicating that no cross-hybridization with *NtSUT1* occurs.

To get a precise localization of expression, the stamens were dissected into filaments, anthers, anthers depleted of pollen and isolated pollen grains (Fig. 2B). The highest amount of *NtSUT3* mRNA was detected in isolated pollen. Since removal of pollen from the anther is incomplete, weak expression was also found in anthers after thorough shaking. No expression could be detected in filaments.

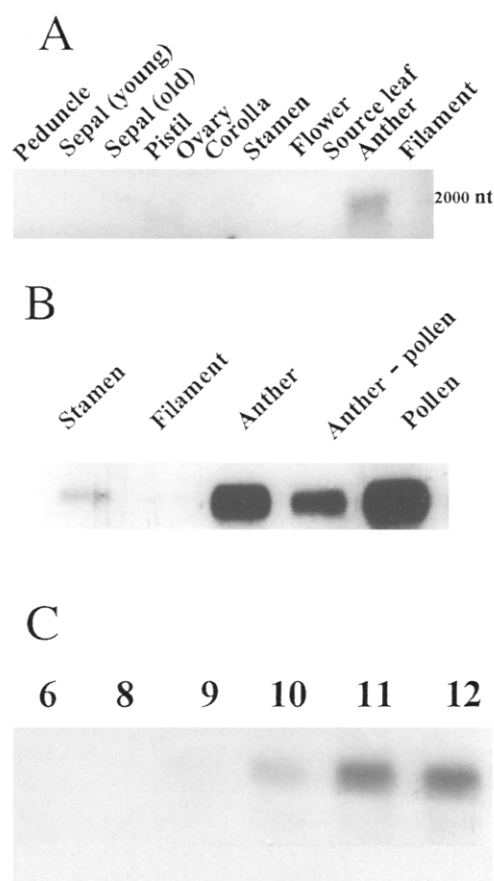


Fig. 2. Expression of *NtSUT3*. For all Northern analyses, 20 μ g of total RNA was loaded per lane. A: Expression of *NtSUT3* in the different parts of the flower. Source leaf RNA was included as a negative control. B: Expression of *NtSUT3* in different parts of the stamen. C: Expression of *NtSUT3* in anthers at different stages of development. Anthers were collected at stages as defined in [26].

3.5. Developmental regulation of *NtSUT3* expression

All preceding RNA blot analyses had been conducted on organs harvested at flower maturity, which in tobacco corresponds to anthesis. To follow *NtSUT3* expression during anther development, anthers were collected at the stages described in [26]. Fig. 2C presents the results obtained on RNA extracted from anthers at stages 6–12, stage 6 corresponding to pollen mitosis I and stage 12 to anther dehiscence. *NtSUT3* expression increased gradually during the very late stages of pollen maturation with a maximum at stages 11–12. Overexposure of the film (data not shown) indicated that no expression was detected before stage 9. RNA purified directly from pollen isolated from anthers at stages 6–12 gave similar results (data not shown) and no expression of *NtSUT3* was found at any stage in other floral organs (data not shown). The control of expression indicates that *NtSUT3* represents a so-called late gene [27] that is activated after pollen mitosis I (stage 6).

In pollen, a large number of genes are actively transcribed late during development and the corresponding transcripts are stored and translated during pollen germination [27]. The expression of *NtSUT3* was investigated during in vitro pollen germination (Fig. 3). The amount of *NtSUT3* mRNA detected in the pollen tube was stable between 1 and 6 h of germination and was only slightly reduced (15–20%) as compared to

that in pollen grains. Thus *NtSUT3* also seems to serve nutrition during pollen tube growth.

4. Discussion

In spite of numerous data available on sugar transport in plants and the evident suitability of pollen for such studies (symplasmic isolation from surrounding tissues), the mechanism of sugar uptake is not clearly known in pollen. A proton/sucrose cotransport mechanism has been proposed in lily pollen tubes [18], whereas hexose carriers have recently been cloned and found to be specifically expressed in the pollen of petunia [20] and *Arabidopsis* [19]. Expression of *AtSTP2* is limited to early stages of gametophyte development at the beginning of callose degradation and microspore release [19] and *AtSTP2* would transport callose-derived monosaccharides. *Pmt1* is expressed specifically in the male gametophyte, and high levels of mRNA accumulate in mature pollen and in pollen germinated for 13 h [20]. Our results on pollen germination confirm that sucrose is the best substrate with almost 80% germination after 2 h. Products of sucrose cleavage are partially able to sustain germination whereas glucose is not a good substrate. This finding disagrees with the data obtained for petunia pollen [20] where glucose efficiently supported germination. Whether this discrepancy is related to specific differences remains to be determined. Sugar uptake experiments indicate that sucrose in pollen tubes is, at least in part, taken up without cleavage by invertase, as already suggested in [18]. To analyze the molecular basis of sucrose transport into pollen, a SUT cDNA was cloned by screening a tobacco pollen-specific library with *NtSUT1*, a cDNA encoding the sieve element sucrose transporter from *N. tabacum* [5,7]. *NtSUT3* shares 64.9% identity at the amino acid level with *NtSUT1*, and has all characteristics of plant sucrose transporters. Several attempts to demonstrate a sucrose transporter function in yeast failed and this could be related to features specific for *NtSUT3*. Short upstream open reading frames are supposed to regulate translation. This phenomenon has been studied extensively for the *pma3* gene of the H^+ /ATPase of *N. plumbaginifolia* where disruption of a five amino acid upstream

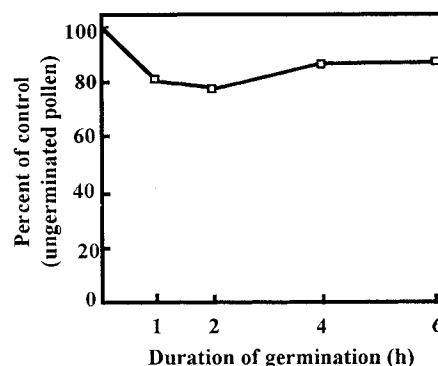


Fig. 3. Expression of *NtSUT3* during pollen tube germination. Pollen tubes were separated from ungerminated pollen at selected times as described in Section 2. 20 μ g of total RNA was loaded per lane. Expression was quantified on an Instant Imager. The results were calibrated by using actin as control (actin cDNA was isolated from the pollen-specific cDNA library, Bürkle, Stadelhofer and Frommer, personal communication). Results are expressed as percent of ungerminated pollen.

open reading frame led to a 55% increase in translation in tobacco protoplasts [28]. Furthermore, *NtSUT3* contains three in frame ATGs which might be detrimental to heterologous expression in yeast [29]. These different elements are certainly involved in translational regulation of expression and could explain the absence of functional expression in yeast. The high sequence identity with *NtSUT1* and other plant sucrose carriers cDNAs argues in favor of *NtSUT3* being a sucrose carrier. However, one cannot rule out the possibility that *NtSUT3* does transport different substrates.

As expected from the cloning of *NtSUT3* in a pollen cDNA library, *NtSUT3* expression is highly specific. Northern analysis only detects *NtSUT3* mRNA in the pollen. *NtSUT3* expression is restricted to the very late stages of flower development (Fig. 2C) classifying *NtSUT3* as a 'late pollen gene' [27] similar to *pmt1*. *NtSUT3* is expressed when pollen grains mature in the thecal fluid of the loculus and take up sugar from this fluid [30]. No data on the exact nature of sugars taken up during pollen maturation are available except for the cloning of hexose transporters in petunia and *Arabidopsis* [19,20]. *NtSUT3* could thus mediate the uptake of sucrose in the pollen grain during maturation, particularly in tobacco pollen where sucrose represents by far the major soluble sugar (sucrose content is approx. 76 ± 7 mg/g pollen, mean \pm S.D. of two measurements; Lemoine, unpublished results) whereas no starch is detected by iodide staining. But *NtSUT3* expression is also detected in mature pollen grains and during pollen tube growth (Fig. 3) as for many pollen-specific genes which transcripts are translated at the time of germination [24]. *NtSUT3* expression during pollen tube growth is in accordance with uptake and germination studies. Although these results were obtained in vitro, the medium used allows a very efficient growth for up to 48 h with all morphological characteristics of in vivo pollen [21]. Altogether, this indicates that *NtSUT3* could also play a role in the nutrition of the pollen tube, both in vitro and in vivo.

According to the different data available, germination and growth of pollen tubes may not be homogeneous with time. In binucleate pollen like *Nicotiana*, division of the generative cell into sperm cells occurs after several hours of germination and corresponds to the switch from autotrophic to heterotrophic growth [24]. Ylstra et al. [20] measured that sucrose was converted to hexoses in the germination medium after 13 h, but gave no indication that sucrose was cleaved directly from the beginning of germination. In tobacco pollen tube, invertase activity increases with time. This could indicate that sucrose is the preferred form of uptake during the first hours of germination, in accordance with the description of a proton/sucrose cotransport in lily pollen after 1.5 h germination [18]. However, also in lily, sucrose uptake was partially inhibited by glucose. Taken together, these data indicate that sugar transport could well be a mixture of sucrose and hexose uptake. Due to the very high growth rate of the pollen tube, it is conceivable that different uptake pathways are used for efficient nutrition.

The identification of *NtSUT3* as a putative pollen-specific sucrose carrier is in accordance with the description of numerous pollen-specific genes that encode transport proteins having homologs in the sporophyte [19,20,31,32]. Nevertheless, this is the first report of a sucrose transporter-like protein specifically expressed in one single sink organ. *AtSUC1* has been recently localized to the pollen grain and tube in *Arabi-*

dopsis, but also in other parts of the anther and flower (N. Sauer, personal communication) [33]. Our results based on mRNA expression are in agreement with physiological data. More experiments will be needed to determine if both transporters (*NtSUT3* and *AtSUC1*) have the same localization. Work is under way to determine the exact role of *NtSUT3* during pollen maturation and/or pollen tube development. In tobacco, reverse genetics and the accessibility to pollen for physiological analysis should give important information.

Acknowledgements: We are very grateful to Nicole Thiele and Bettina Stadelhofer for their excellent technical assistance. This work was supported by grants from the Deutsche Forschungsgemeinschaft SFB446 to W.B.F. and from the European Commission DGXII Biotechnology programme (Contract BIO4-CT96-0583) to R.L. and W.B.F.

References

- [1] Riesmeier, J.W., Willmitzer, L. and Frommer, W.B. (1992) EMBO J. 11, 4705–4713.
- [2] Riesmeier, J.W., Hirner, B. and Frommer, W.B. (1993) Plant Cell 5, 1591–1598.
- [3] Sauer, N. and Stolz, J. (1994) Plant J. 6, 67–77.
- [4] Gahrtz, M., Stolz, J. and Sauer, N. (1994) Plant J. 6, 697–706.
- [5] Bürkle, L., Hibbert, J.M., Quick, W.P., Kühn, C., Hirner, B. and Frommer, W.B. (1998) Plant Physiol. 108, 59–68.
- [6] Stadler, R., Brandner, J., Schulz, A., Gahrtz, M. and Sauer, N. (1995) Plant Cell 7, 1545–1554.
- [7] Kühn, C., Franceschi, V.R., Schulz, A., Lemoine, R. and Frommer, W.B. (1997) Science 275, 1298–1300.
- [8] Patrick, J.W. (1997) Annu. Rev. Plant Physiol. Plant Mol. Biol. 48, 191–222.
- [9] Weig, A. and Komor, E. (1996) J. Plant Physiol. 147, 685–690.
- [10] Weber, H., Borisjuk, L., Heim, U. and Sauer, N. (1997) Plant Cell 9, 895–908.
- [11] Harrington, G.N., Franceschi, V.R., Offler, C.E., Patrick, J.W., Tegeder, M., Frommer, W.B., Harper, J.F. and Hitz, W.D. (1997) Protoplasma 197, 160–173.
- [12] Bick, J.A., Neelma, A., Smith, E., Nelson, S.J., Hall, J.L. and Williams, L.E. (1998) Plant Mol. Biol. 38, 425–435.
- [13] Tegeder, M., Wang, X.D., Frommer, W.B., Offler, C.E. and Patrick, J.W. (1999) Plant J. (in press).
- [14] Sauer, N. and Tanner, W. (1993) Bot. Acta 106, 277–286.
- [15] Oparka, K.J., Duckett, C.M., Prior, D.A.M. and Fisher, D.B. (1994) Plant J. 6, 759–766.
- [16] Roberts, A.G., Santa Cruz, S., Roberts, I.M., Prior, D.A.M., Turgeon, R. and Oparka, K.J. (1997) Plant Cell 9, 1381–1396.
- [17] Imlau, A., Truernit, E. and Sauer, N. (1999) Plant Cell 11, 309–322.
- [18] Deshusses, J., Gumber, S.C. and Loewus, F.A. (1981) Plant Physiol. 67, 793–796.
- [19] Truernit, E., Stadler, R., Baier, K. and Sauer, N. (1999) Plant J. 17, 191–201.
- [20] Ylstra, B., Garrido, D., Busscher, J. and van Tunen, A.J. (1998) Plant Physiol. 118, 297–304.
- [21] Read, S.M., Clarke, A.E. and Bacic, A. (1993) Protoplasma 117, 1–14.
- [22] Van Huylbroeck, J.M. and Debergh, P.C. (1996) Physiol. Plant. 96, 298–304.
- [23] Kay, R., Chan, A., Daly, M. and McPherson, J. (1987) Science 236, 1299–1302.
- [24] Read, S.M., Clarke, A.E. and Bacic, A. (1992) in: Angiosperm Pollen and Ovules (Mulcahy, D., Ottaviano, E., Sari Gorla, M. and Mulcahy, G.B., Eds.), pp 162–167, Springer Verlag, Berlin.
- [25] Rentsch, D., Laloi, M., Rouhara, I., Schmelzer, E., Delrot, S. and Frommer, W.B. (1995) FEBS Lett. 370, 264–268.
- [26] Koltunow, A.M., Truettner, J., Cox, K.H., Wallroth, M. and Goldberg, R.B. (1990) Plant Cell 2, 1201–1224.
- [27] Twell, D. (1994) in: Molecular and Cellular Aspects of Plant Reproduction (Scott, R.J. and Stead, A.D., Eds.), pp. 83–136,

- Society for Experimental Biology Seminar Series 55. Cambridge University Press, Cambridge.
- [28] Lukaszewicz, M., Jérrouville, B. and Boutry, M. (1988) *Plant J.* 14, 413–424.
- [29] Serrano, R. and Villalba, J.M. (1995) *Methods Cell Biol.* 50, 481–496.
- [30] Clement, C. and Audran, J.C. (1995) *Protoplasma* 187, 172–181.
- [31] Lalanne, E., Mathieu, C., Roche, O., Vedel, F. and De Pape, R. (1997) *Plant Mol. Biol.* 35, 855–864.
- [32] Schwacke, R., Grallath, S., Breitzkreuz, K.E., Stransky, E., Stransky, H., Frommer, W.B. and Rentsch, D. (1999) *Plant Cell* 11, 377–392.
- [33] Stadler, R., Truernit, E., Gahrtz, M. and Sauer, N. (1999) *Plant J.*, in press.