

## DNA Strand Cleavage near a CC Mismatch Directed by a Metalloinsertor

Mi Hee Lim, Irvin H. Lau, and Jacqueline K. Barton\*

Division of Chemistry and Chemical Engineering, California Institute of Technology, Pasadena, California 91125

Received August 10, 2007

Reagents for recognition and efficient cleavage of mismatched DNA without photoactivation were designed. They contain a combination of a mismatch-directing metalloinsertor,  $[\text{Rh}(\text{bpy})_2(\text{chrysi})]^{3+}$  (bpy = 2,2'-bipyridyl, chrysi = 5,6-chrysenequinone diimine), and an oxidative cleavage functionality,  $[\text{Cu}(\text{phen})_2]^+$  (**Cu**). Both unconjugated (**Rh+Cu**) and conjugated (**Rh-Cu**) frameworks of the Rh insertor and **Cu** were prepared. Compared to **Cu**, both constructs **Rh+Cu** and **Rh-Cu** exhibit efficient site-specific DNA scission only with mismatched DNA, confirmed by experiments with  $^{32}\text{P}$ -labeled oligonucleotides. Furthermore, these studies indicate that DNA cleavage occurs near the mismatch in the minor groove and on both strands. Interestingly, the order of reactivity of the three systems with a CC mismatch is **Rh+Cu** > **Rh-Cu** >> **Cu**. Rh binding appears to direct Cu reactivity with or without tethering. These results illustrate advantages and disadvantages in bifunctional conjugation.

Base-pair mismatches in the genome can arise from damage by environmental agents (i.e., UV light), a wide range of genotoxic chemicals, as well as errors made by DNA polymerase during synthesis.<sup>1,2</sup> These base mispairs are generally corrected by the mismatch repair machinery; if they are not repaired, however, mutations arise, which subsequently lead to increased cancer susceptibility.<sup>1–4</sup> To recognize DNA mismatches, we have developed Rh complexes containing an intercalating ligand that is too bulky to insert at stable matched sites and instead preferentially binds to thermodynamically destabilized mismatched sites.<sup>5–8</sup> The complex  $[\text{Rh}(\text{bpy})_2(\text{chrysi})]^{3+}$  (bpy = 2,2'-bipyridyl, chrysi = 5,6-chrysenequinone diimine; Figure 1), designed by our

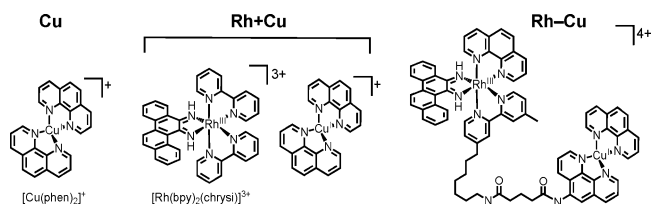


Figure 1. Chemical structures of **Cu**, **Rh+Cu**, and **Rh-Cu**.

laboratory, targets more than 80% of mismatches with high selectivity and promotes single-stranded cleavage of the DNA backbone next to the mismatch site upon photoactivation.<sup>5–7</sup> More interestingly, this Rh complex can detect and photocleave a single base mismatch in a linearized 2725 base-pair plasmid.<sup>6</sup> We have recently elucidated how the complex  $[\text{Rh}(\text{bpy})_2(\text{chrysi})]^{3+}$  interacts with the mismatched sites in DNA by crystal structural determination and NMR analysis.<sup>9,10</sup> The binding mode of this complex to the mismatch site is not classical intercalation but rather insertion. The expansive chrysi ligand is deeply inserted into the mismatch site in the minor groove, resulting in the complete ejection of mismatched bases from the base stack.

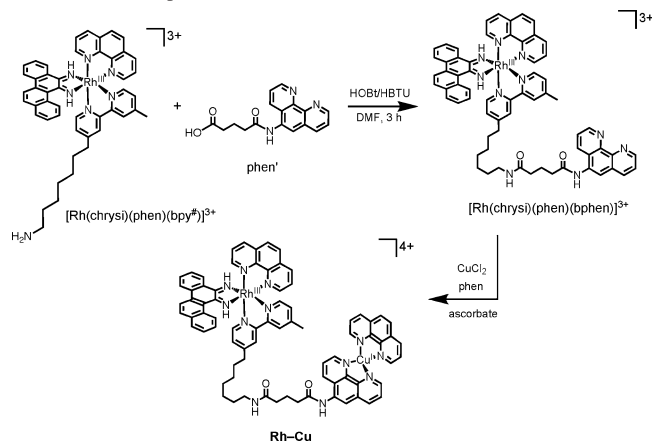
Recently, this mismatch-specific metalloinsertor has shown promise in cell-selective strategies for chemotherapeutic design.<sup>11</sup> The Rh complex selectively inhibits cellular proliferation in mismatch repair-deficient cells as compared to mismatch repair-proficient cells. In another possible chemotherapeutic approach, bifunctional conjugates that combine a metalloinsertor targeting DNA mismatches with a reactive species such as an aniline mustard or a cisplatin analogue have been designed.<sup>12–14</sup> Studies of these conjugates demonstrate that the Rh moiety tunes the reactivity of the agent linked to the metalloinsertor.

\* To whom correspondence should be addressed. E-mail: jkbarton@caltech.edu.

- (1) Hoeijmakers, J. H. *Nature* **2001**, *411*, 366–374.
- (2) (a) Jiricny, J.; Marra, G. *Curr. Opin. Genet. Dev.* **2003**, *13*, 61–69. (b) Jiricny, J. *Nat. Rev. Mol. Cell Biol.* **2006**, *7*, 335–346.
- (3) Schäfer, O. D. *Angew. Chem., Int. Ed.* **2003**, *42*, 2946–2974.
- (4) Duval, A.; Hamelin, R. *Cancer Res.* **2002**, *62*, 2447–2454.
- (5) Jackson, B. A.; Barton, J. K. *J. Am. Chem. Soc.* **1997**, *119*, 12986–12987.
- (6) Jackson, B. A.; Alekseyev, V. Y.; Barton, J. K. *Biochemistry* **1999**, *38*, 4655–4662.
- (7) Jackson, B. A.; Barton, J. K. *Biochemistry* **2000**, *10*, 6176–6182.
- (8) Junicke, H.; Hart, J. R.; Kisko, J.; Glebov, O.; Kirsch, I. R.; Barton, J. K. *Proc. Natl. Acad. Sci. U.S.A.* **2003**, *100*, 3337–3342.

- (9) Pierre, V. C.; Kaiser, J. T.; Barton, J. K. *Proc. Natl. Acad. Sci. U.S.A.* **2007**, *104*, 429–434.
- (10) Cordier, C.; Pierre, V. C.; Barton, J. K. *J. Am. Chem. Soc.* **2007**, in press.
- (11) Hart, J. R.; Glebov, O.; Ernst, R. J.; Barton, J. K. *Proc. Natl. Acad. Sci. U.S.A.* **2006**, *103*, 15359–15363.
- (12) Schatzschneider, U.; Barton, J. K. *J. Am. Chem. Soc.* **2004**, *126*, 8630–8631.
- (13) Petitjean, A.; Barton, J. K. *J. Am. Chem. Soc.* **2004**, *126*, 14728–14729.
- (14) A bifunctional conjugate has also been prepared with an unreactive fluorophore. See: Zeglis, B. M.; Barton, J. K. *J. Am. Chem. Soc.* **2006**, *128*, 5654–5655.

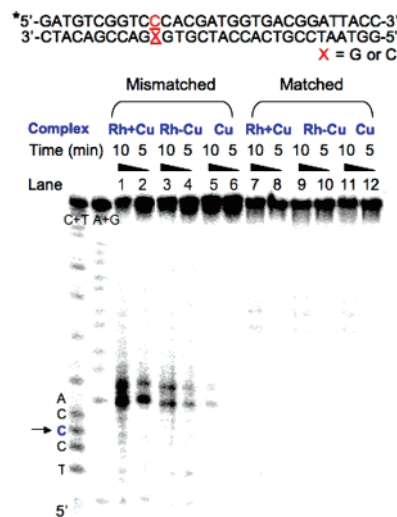
Scheme 1. Preparation of Rh–Cu



Following this conjugation strategy, a construct can be devised for targeting and cleaving mismatched DNA without light activation. To achieve this, we have investigated the reactivity of a chemical DNA cleavage agent in the presence of  $[\text{Rh}(\text{bpy})_2(\text{chrysi})]^{3+}$ . For efficient oxidative cleavage, we have pursued the use of  $[\text{Cu}(\text{phen})_2]^{2+}$  with the Rh insertor (phen = phenanthroline). In the presence of a reducing agent, the newly formed  $[\text{Cu}(\text{phen})_2]^+$  (**Cu**; Figure 1) promotes light-independent DNA backbone cleavage, showing more localized cleavage sites than those generated by  $[\text{Fe}(\text{EDTA})]^{2-}$  (EDTA = ethylenediaminetetraacetic acid).<sup>15–17</sup> The complex **Cu** tethered to various DNA-binding moieties exhibits efficient DNA scission.<sup>17</sup> The redox chemistry of  $[\text{Cu}(\text{phen})_2]^{2+}$  is feasible in the reducing environment of living cells, suggesting also a potential biological application of the Cu species with the Rh insertor. Here we report the preparation of combined Rh and Cu systems that are composed of the metalloinsertor and the Cu complex as well as an examination of their DNA cleavage activity without photoactivation.

The reactivity of both nonconjugates (**Rh+Cu**) and conjugates (**Rh–Cu**) of  $[\text{Rh}(\text{bpy})_2(\text{chrysi})]^{3+}$  and **Cu** in DNA scission was examined. The Rh complex  $[\text{Rh}(\text{bpy})_2(\text{chrysi})]^{3+}$  in **Rh+Cu** (Figure 1) was synthesized as described.<sup>18</sup> For the conjugate **Rh–Cu**, we prepared its precursor  $[\text{Rh}(\text{chrysi})(\text{phen})(\text{bphen})]^{3+}$  [bphen =  $N^1$ -[7-(4'-methyl-2,2'-bipyridin-4-yl)heptyl]- $N^5$ -(1,10-phenanthrolin-5-yl)pentanediamide] through the coupling reaction of  $[\text{Rh}(\text{chrysi})(\text{phen})(\text{bpy}^\#)]^{3+}$  [bpy<sup>#</sup> = 7-(4'-methyl-2,2'-bipyridin-4-yl)heptan-1-amine]<sup>12</sup> with the modified phen ligand [phen' = 5-(1,10-phenanthrolin-5-ylamino)-5-oxopentanoic acid],<sup>19</sup> as described in Scheme 1 and the Supporting Information. Cu coordination was accomplished in situ (vide infra), affording the conjugate **Rh–Cu**.

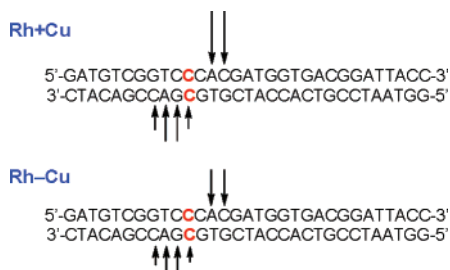
- (15) (a) Sigman, D. S.; Mazumder, A.; Perrin, D. M. *Chem. Rev.* **1993**, *93*, 2295–2316 and references cited therein. (b) Meijler, M. M.; Zelenko, O.; Sigman, D. S. *J. Am. Chem. Soc.* **1997**, *119*, 1135–1136.
- (16) Stubbe, J.; Kozarich, J. W. *Chem. Rev.* **1987**, *87*, 1107–1136 and references cited therein.
- (17) (a) Sigman, D. S.; Chen, C. H. *Annu. Rev. Biochem.* **1990**, *59*, 207–236. (b) Bruice, T. W.; Wise, J. G.; Rosser, D. S. E.; Sigman, D. S. *J. Am. Chem. Soc.* **1991**, *113*, 5446–5447.
- (18) Zeglis, B. M.; Barton, J. K. *Nat. Protoc.* **2007**, *2*, 357–371.
- (19) Sardesai, N. Y.; Lin, S. C.; Zimmermann, K.; Barton, J. K. *Bioconjugate Chem.* **1995**, *6*, 302–312.



**Figure 2.** Sequences of 31-mer oligonucleotides (top). Autoradiogram of a denaturing 20% polyacrylamide gel presenting DNA cleavage by **Cu**, **Rh+Cu**, and **Rh–Cu** with matched and mismatched oligonucleotides (bottom). A+G and C+T, Maxam–Gilbert sequencing reactions. The asterisk indicates the 5'-<sup>32</sup>P end label of the strand. Conditions: duplex (1  $\mu\text{M}$ ), **Cu** (1  $\mu\text{M}$   $\text{CuCl}_2$ , 3  $\mu\text{M}$  phen, and 5 mM sodium ascorbate), **Rh+Cu** (1  $\mu\text{M}$   $[\text{Rh}(\text{bpy})_2(\text{chrysi})]^{3+}$ , 1  $\mu\text{M}$   $\text{CuCl}_2$ , 3  $\mu\text{M}$  phen, and 5 mM sodium ascorbate), **Rh–Cu** (1  $\mu\text{M}$   $[\text{Rh}(\text{chrysi})(\text{phen})(\text{bphen})]^{3+}$ , 1  $\mu\text{M}$   $\text{CuCl}_2$ , 3  $\mu\text{M}$  phen, and 5 mM sodium ascorbate), in 10 mM Tris, pH 7.5, 50 mM NaCl at 37 °C. Lanes 1, 2, 7, and 8, fragments with **Rh+Cu**; lanes 3, 4, 9, and 10, fragments with **Rh–Cu**; lanes 5, 6, 11, and 12, fragments with **Cu**. The time shown reflects the incubation time after treatment with sodium ascorbate before quenching. The arrow marks the mismatched site.

DNA cleavage experiments of **Rh+Cu** and **Rh–Cu** with 31-mer oligonucleotides either lacking or containing a CC mismatch were performed and monitored by denaturing polyacrylamide gel electrophoresis (Figure 2). In the case of the reactions of **Rh+Cu** with DNA, the duplex (1  $\mu\text{M}$ ) was incubated with 1  $\mu\text{M}$   $[\text{Rh}(\text{bpy})_2(\text{chrysi})]^{3+}$  at 37 °C for 5 min, followed by the addition of 1  $\mu\text{M}$   $\text{CuCl}_2$  and 3  $\mu\text{M}$  phen; upon treatment with 5 mM ascorbate, the reagents were allowed to react with DNA. After 5 or 10 min, the reactions were quenched by a 5 min treatment with 5 mM dmp (dmp = 2,9-dimethyl-1,10-phenanthroline) followed by freezing. For the conjugate **Rh–Cu**, the Rh complex  $[\text{Rh}(\text{chrysi})(\text{phen})(\text{bphen})]^{3+}$  (1  $\mu\text{M}$ ) was incubated in the following order: duplex (1  $\mu\text{M}$ , 5 min, 37 °C),  $\text{CuCl}_2$  (1  $\mu\text{M}$ , 5 min, 37 °C), phen (3  $\mu\text{M}$ ), and ascorbate (5 mM). The reaction was then quenched in the same manner as that described above. To compare the reactivities of **Cu**, **Rh+Cu**, and **Rh–Cu**, **Cu** was also generated in situ by reacting  $\text{CuCl}_2$  (1  $\mu\text{M}$ ) with phen (3  $\mu\text{M}$ ), followed by ascorbate (5 mM), and was similarly allowed to react with the duplex. As shown in Figure 2, site-specific DNA cleavage occurs only in the presence of mismatched DNA, and the sites cleaved are near the mismatched site (two or three bases away). No DNA cleavage without light is evident for the parent conjugate without **Cu** or any of the individual reagents. More interestingly, the nonconjugate **Rh+Cu** exhibits more efficient DNA scission than the conjugate **Rh–Cu** (cleavage yield<sup>20</sup> for 5 min = 35 and 19%; for 10 min = 65 and 41% by **Rh+Cu**

(20) Cleavage yield (%) =  $I_{\text{cp}} / (I_{\text{cp}} + I_{\text{p}}) \times 100$  ( $I_{\text{cp}}$  = intensity of the cleavage product bands;  $I_{\text{p}}$  = intensity of the parent strand band).



**Figure 3.** Representation of DNA cleavage sites by **Rh+Cu** (top) and **Rh-Cu** (bottom). The arrows indicate the cleavage sites on the 5'-<sup>32</sup>P-end-labeled strands. The length of each arrow at the given site reflects the relative percent cleavage on the strand. The mismatched site is highlighted in red.

and **Rh-Cu**, respectively, in Figure 2). Note that some cleavage is evident also with **Cu** alone.<sup>21</sup> Binding of the Rh moiety of **Rh+Cu** and **Rh-Cu** to the mismatch site was visualized independently by performing photoactivated DNA cleavage with  $[\text{Rh}(\text{bpy})_2(\text{chrysi})]^{3+}$  and  $[\text{Rh}(\text{chrysi})(\text{phen})(\text{bphen})]^{3+}$  without **Cu** present (Figure S1 in the Supporting Information). These results together indicate that the recognition of mismatched DNA by the Rh moiety enhances the cleavage activity of **Cu** close to the mismatch.

To obtain further structural information regarding the DNA cleavage site, we performed the cleavage experiments using the <sup>32</sup>P-end-labeled complementary strands (Figure S2 in the Supporting Information). Site-specific DNA scission is again observed only with mismatched DNA. On both strands, the cleavage sites are mainly two or three bases from the mismatch toward the 3' end (Figure 3). Furthermore, more efficient DNA cleavage is found with the unconjugated framework **Rh+Cu** than with the conjugate **Rh-Cu**.

The 3' asymmetry in cleavage sites by **Rh+Cu** and **Rh-Cu** on both strands indicates that DNA cleavage occurs in the minor groove (Figure 3).<sup>22</sup> This result is not surprising because both the parent Rh complex and  $\text{Cu}(\text{phen})_2^+$  are known to bind DNA from the minor groove side.<sup>9,15–17</sup> Thus, both covalently and noncovalently, the Rh insertor directs reactivity of the Cu center in the minor groove.

Because binding of the Rh insertor into the mismatch site results in ejection of the mismatched bases, we also explored whether the Cu complex might react with the ejected bases. To evaluate this, alkaline and piperidine treatments were performed after the reaction of the mismatched DNA with **Rh+Cu** (Figure S3 in the Supporting Information). No new scission products are observed, suggesting that the Cu

complex does not react with the bases or the ejected bases upon insertion of the Rh moiety into mismatched DNA to form alkaline- or piperidine-sensitive lesions. Thus, the observed DNA cleavage, induced by the reaction of **Cu**, appears primarily with the sugar ring.<sup>15–17</sup>

Why do we find preferential reaction with **Rh+Cu** rather than the tethered conjugate **Rh-Cu**? One possible explanation is that Rh binding may locally distort the helix to facilitate  $\text{Cu}(\text{phen})_2^+$  reaction. Reaction by  $\text{Cu}(\text{phen})_2^+$  is localized, directed by an intermediate high-valent  $\text{Cu}(\text{O})$  species.<sup>17,23</sup> Tethering to the Rh center may also somewhat confine the orientation of the damaging agent. Additionally, tethering affects binding of the Rh complex within the narrow minor groove. Measurements of the binding of  $[\text{Rh}(\text{bpy})_2(\text{chrysi})]^{3+}$  and  $[\text{Rh}(\text{chrysi})(\text{phen})(\text{bphen})]^{3+}$  by a photocleavage assay (Figure S1 in the Supporting Information) show a decrease in the binding affinity to the mismatched site associated with functionalizing the bpy ligand. Thus, the relative reactivities of **Rh-Cu** and **Rh+Cu** are likely a consequence of confinement of both the Rh and Cu moieties in the particularly narrow minor groove of the DNA duplex.

This work establishes a new approach for developing an efficient cleavage agent without light that is specific for mismatched DNA. In order to exploit the individual contributions of the Rh and Cu complexes in recognition of mismatched DNA and strand cleavage, both species were combined. This remains a useful strategy to couple recognition and reaction. Conjugation of these two species, however, results in a reduction in both the binding and reactivity of the complexes with mismatched DNA. Indeed, for the CC mismatch, the parent Rh complex can direct **Cu** reactivity without cumbersome synthesis. Although unexpected, these results illustrate both the advantages and disadvantages of preparing bifunctional conjugates.

**Acknowledgment.** We are grateful to the NIH (Grant GM33309) and Applied Biosystems for their financial support. We also thank the Tobacco-Related Disease Research Program (TRDRP) for a postdoctoral fellowship to M.H.L.

**Supporting Information Available:** Preparation of the conjugate **Rh-Cu** and Figures S1–S3. This material is available free of charge via the Internet at <http://pubs.acs.org>.

IC701598K

(21) Cleavage with  $\text{Cu}(\text{phen})_2^+$  alone on the mismatched oligonucleotide may reflect dynamic fraying associated with the destabilized mismatch.  
(22) Dervan, P. B. *Science* **1986**, 232, 464–471.

(23) Thyagarajan, S.; Murthy, N. N.; Narducci-Sarjeant, A. A.; Karlin, K. D.; Rokita, S. E. *J. Am. Chem. Soc.* **2006**, 128, 7003–7004.