

Three-Phase Solid–Liquid–Vapor Equilibria of the Systems Ethane–Benzene, Ethane–Cyclohexane, and Ethane–*trans*-Decalin

Paul H. Liu, Kraemer D. Luks, and James P. Kohn*

Department of Chemical Engineering, University of Notre Dame, Notre Dame, Indiana 46556

Pressure–temperature profiles along with liquid compositions and liquid molar volumes for binary systems of the solvent ethane with the solutes benzene, cyclohexane, and *trans*-decalin are presented for the solid–liquid–vapor loci. The data were taken using cryoscopic techniques over a liquid compositional range extending from solute-rich solutions to solute-lean solutions. The data are pictorialized as the logarithm of composition vs. reciprocal temperature to elucidate the nonideality of the liquid phase. The standard deviations of the liquid compositional data are 1.37% for benzene, 1.55% for cyclohexane, and 1.53% for *trans*-decalin.

Solid solubility data of hydrocarbons in low molecular weight solvents are important for use in the design of liquefaction, vaporization, and transport systems for liquefied natural gas (LNG) and liquefied petroleum gas (LPG). The pertinent data, being in the low solute concentration range, are scarce, as can be seen by inspection of Kurata's review (6) of experimental data on the solid solubility of hydrocarbons in liquefied methane. The best recent data on the solid solubility of hydrocarbons in methane are those of Kuebler and McKinley (3, 4), which included *n*-alkanes and benzene and toluene.

Since additional experimental data on the solid solubility of hydrocarbons (including alkanes, aromatics, and naphthenes) in methane, ethane, and propane are needed, the authors have undertaken an extended study of such systems. In an earlier paper (2), we examined the binary systems of solvent ethane with solutes *n*-octane, *n*-decane, and *n*-dodecane, over a wide range of solute compositions. In this paper, the study is extended to binary systems of solvent ethane with benzene, cyclohexane, and *trans*-decalin as solutes, in an effort to understand the solubility behavior of ringed species in liquid ethane. The data are taken along the solid–liquid–vapor locus for each binary system.

Experimental Section

The apparatus was identical with that reported by Lee and Kohn (7) which was used in other cryoscopic studies (1, 5). The experimental procedure is described in our earlier paper (2). In performing the experiments, all data were taken with only a trace of the solute in solid form. Imposing the assumption that the solute was nonvolatile at the conditions of study, the compositions and molar volumes of the liquid phase were calculated stoichiometrically. Due to supercooling of the liquid phase prior to crystallization, all crystal points were taken as temperature was increased. The degree of supercooling was 1 to 2° for benzene and cyclohexane, and about 4° for *trans*-decalin.

Each experimental run consisted of loading a known amount of hydrocarbon (solute) into the cell and adding known amounts of ethane and observing the crystal points, until the cell was filled with liquid phase. Measurements on each solute were done with at least five different initial masses of solute in the equilibrium cell. This provided overlapping data points and permitted a good estimate of the precision of the data.

Materials

The ethane used in this study was Matheson CP grade with a minimum purity of 99%. Small amounts of ethylene, propylene, and propane and traces of methane were present as impurities.

The cyclohexane used was an Eastman reagent "ACS" grade chemical. The benzene was a Mallinckrodt "Spectrar" spectrophotometric grade chemical. The *trans*-decalin was supplied by Columbia Organic Chemicals Co., Inc., and is at least 99% pure.

All chemicals were used without further purification.

Results

Tables I–III present the smoothed experimental data for the three systems studied. The pressures are precise to ± 0.1 atm, the temperatures to ± 0.2 °C, and the liquid molar volumes to ± 0.4 ml g-mol⁻¹.

The data were smoothed prior to its tabulation by using the deviations between ideal and actual solubilities. The ideal solubility for each solute component was determined by use of a simple version of the Van't Hoff isochore for freezing point lowering:

$$\ln x_1 = \frac{\Delta H_{FUS}}{RT_{FUS}} (1 - 1/T^*) \quad (1)$$

where $T^* = T/T_{FUS}$, ΔH_{FUS} = enthalpy of fusion of each pure solute, and T_{FUS} = triple point temperature of each pure solute. The enthalpies of fusions and the triple-point temperatures were taken from Rossini (8). The ratio of the ideal solubility to the experimental solubility is the estimated activity coefficient of the solute.

Table I. Vapor–Liquid–Solid Three Phase Smoothed Data: Ethane–Benzene Binary System

| Temp (K) | Pressure (atm) | Liquid phase composition (mole fraction C ₆) | Liquid phase volume (ml g-mol ⁻¹) |
|----------|----------------|--|---|
| 265 | 8.05 | 0.7648 | 81.8 |
| 260 | 9.30 | 0.6522 | 77.7 |
| 255 | 9.75 | 0.5308 | 73.9 |
| 250 | 9.68 | 0.4096 | 70.4 |
| 245 | 9.04 | 0.2983 | 67.5 |
| 240 | 8.22 | 0.2128 | 65.1 |
| 235 | 7.24 | 0.1577 | 63.3 |
| 230 | 6.30 | 0.1201 | 62.1 |
| 225 | 5.38 | 0.0924 | 61.0 |
| 220 | 4.60 | 0.0721 | 60.1 |
| 215 | 4.39 | 0.0573 | 59.4 |
| 210 | 3.38 | 0.0455 | 58.6 |
| 205 | 2.76 | 0.0362 | 58.0 |
| 200 | 2.21 | 0.0287 | 57.3 |
| 195 | 1.75 | 0.0227 | 56.6 |
| 190 | 1.43 | 0.0179 | 56.0 |
| 185 | 1.09 | 0.0140 | 55.3 |
| 180 | 0.74 | 0.0109 | 54.7 |
| 175 | | 0.00845 | 54.0 |

Table II. Vapor-Liquid-Solid Three Phase Smoothed Data: Ethane-Cyclohexane Binary System

| Temp (K) | Pressure (atm) | Liquid phase composition (mole fraction C ₆) | Liquid phase volume (ml g-mol ⁻¹) |
|----------|----------------|--|---|
| 255 | 1.96 | 0.9030 | 98.2 |
| 250 | 2.02 | 0.8941 | 97.4 |
| 245 | 2.06 | 0.8754 | 96.5 |
| 240 | 2.07 | 0.8561 | 95.6 |
| 235 | 2.06 | 0.8355 | 94.5 |
| 230 | 2.03 | 0.8135 | 93.3 |
| 225 | 1.92 | 0.7944 | 92.0 |
| 220 | 1.70 | 0.7698 | 90.4 |
| 215 | 1.50 | 0.7456 | 89.0 |
| 210 | 1.35 | 0.7203 | 87.6 |
| 205 | 1.23 | 0.6983 | 86.0 |
| 200 | 1.13 | 0.6728 | 84.5 |
| 195 | 1.06 | 0.6575 | 82.9 |
| 190 | 1.00 | 0.6275 | 81.2 |
| 185 | 0.95 | 0.5746 | 78.8 |
| 180 | | 0.4803 | 74.9 |
| 175 | | 0.3718 | 68.3 |
| 170 | | 0.2781 | 63.4 |
| 165 | | 0.2079 | 59.7 |
| 160 | | 0.1556 | 57.4 |
| 155 | | 0.1168 | 55.6 |
| 150 | | 0.0890 | 54.1 |
| 145 | | 0.0665 | 52.8 |

Table III. Vapor-Liquid-Solid Three Phase Smoothed Data: Ethane-trans-Decalin Binary System

| Temp (K) | Pressure (atm) | Liquid phase composition (mole fraction C ₁₀) | Liquid phase volume (ml g-mol ⁻¹) |
|----------|----------------|---|---|
| 240 | 1.64 | 0.9287 | 136.0 |
| 235 | 2.47 | 0.8041 | 125.3 |
| 230 | 2.91 | 0.6829 | 115.5 |
| 225 | 3.27 | 0.5682 | 105.4 |
| 220 | 3.35 | 0.4625 | 96.0 |
| 215 | 3.24 | 0.3628 | 87.2 |
| 210 | 2.96 | 0.2701 | 79.3 |
| 205 | 2.48 | 0.1898 | 72.2 |
| 200 | 2.06 | 0.1287 | 66.1 |
| 195 | 1.74 | 0.0861 | 62.2 |
| 190 | 1.52 | 0.0616 | 59.9 |
| 185 | 1.34 | 0.0444 | 58.1 |
| 180 | 1.16 | 0.0323 | 56.6 |
| 175 | 0.96 | 0.0238 | 55.3 |
| 170 | | 0.0177 | 54.2 |
| 165 | | 0.0132 | 53.3 |
| 160 | | 0.00979 | 52.4 |
| 155 | | 0.00713 | 51.5 |
| 150 | | 0.00511 | 50.4 |

In general the activity coefficients will be ≥ 1 , but, in the case of cyclohexane, the activity coefficient was less than unity in the range $1. > x > 0.54$. No heat of fusion was found for *trans*-decalin so an ideal curve was constructed as a tangent in $\ln x$ vs. $1/T^*$ space to the actual data as $x \rightarrow 1.0$.

The activity coefficients were plotted vs. $1/T^*$ and smoothed. Then the smoothed values of x were computed from

$$x = x_1/\gamma \quad (2)$$

where x_1 is calculated from eq 1. The resulting values of x , and also smoothed values of P and v , are those in Tables I-III. In the case of the ethane-benzene system there were runs taken at six different cell loadings—a total of 32 raw data points. The standard deviation between the smoothed compositions in Table

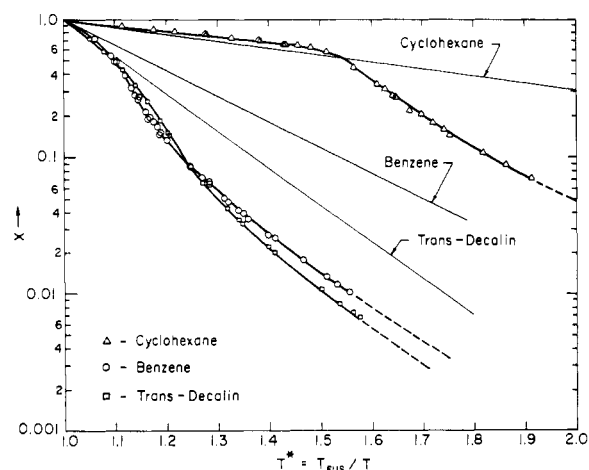


Figure 1. The experimental solute mole fraction vs. reduced reciprocal temperature as compared with ideal predictions. The heavy lines are the smoothed data presented in Tables I-III, while the light lines are the ideal composition loci for the three systems studied.

I and the raw data was 1.37%. There were 26 raw data points taken in five different cell loadings on the ethane-cyclohexane system, and the standard deviation of the smoothed compositions of Table II and the raw data was 1.55%. There were 19 raw data points taken in five different cell loadings on the ethane-*trans*-decalin system, and the standard deviation of the smoothed compositions of Table III and the raw data was 1.53%.

The raw data are shown in Figure 1 along with the smoothed composition lines and "ideal" solubility lines. In the case of the solutes benzene and *trans*-decalin, the solute compositions extend to values low enough that linear extrapolation of the data to lower compositions in Figure 1 would be valid; i.e., one might expect Henry's law to hold for the solute when $x < 0.01$. Although the data also appear to have become linear for the solute cyclohexane at $T^{-1} > 1.8$, the solute compositions are high enough in this region to make linear extrapolation possibly risky.

Glossary

| | |
|------------------|---|
| R | universal gas constant (1.987 cal g-mol ⁻¹ K ⁻¹) |
| P | pressure (atmospheres absolute) |
| T_{FUS} | triple point temperature in K |
| T | temperature in K |
| T^* | T/T_{FUS} |
| v | liquid phase molar volume in ml g-mol ⁻¹ |
| x | solute mole fraction |
| x_1 | ideal solute mole fraction, computed from eq 1 |
| γ | activity coefficient of solute = x_1/x |
| ΔH_{FUS} | enthalpy of fusion of pure solute component (cal g-mol ⁻¹) |

Literature Cited

- (1) Huie, N. C., Luks, K. D., Kohn, J. P., *J. Chem. Eng. Data*, **18**, 311 (1973).
- (2) Kohn, J. P., Luks, K. D., Liu, P. H., *J. Chem. Eng. Data*, **21**, 360 (1976).
- (3) Kuebler, G. P., McKinley, C., *Adv. Cryog. Eng.*, **19**, 320 (1974).
- (4) Kuebler, G. P., McKinley, C., *Adv. Cryog. Eng.*, in press.
- (5) Kulkarni, A. A., Zarah, B. Y., Luks, K. D., Kohn, J. P., *J. Chem. Eng. Data*, **19**, 92 (1974).
- (6) Kurata, F., GPA Research Report, RR-14, 1975.
- (7) Lee, K. H., Kohn, J. P., *J. Chem. Eng. Data*, **14**, 292 (1969).
- (8) Rossini, F. C., Pitzer, K. S., Arnet, R. L., Brown, R. M., Pimental, G. C., "Selected Values of Physical and Thermodynamic Properties of Hydrocarbons and Related Compounds", Carnegie Press, Carnegie Institute of Technology, Pittsburgh, Pa., 1953.

Received for review July 6, 1976. Accepted November 10, 1976. The authors are grateful for support of this work provided by the Gas Processors Association (Research Project No. 735). The research equipment had been built under research grants by the National Science Foundation.