

Densities and Isothermal Compressibilities at Pressures up to 20 MPa of the Systems *N,N*-Dimethylformamide or *N,N*-Dimethylacetamide + 1-Chloroalkane

Pilar García-Giménez, José F. Martínez-López, Sofía T. Blanco, Inmaculada Velasco, and Santos Otín*

Departamento de Química Orgánica - Química Física, Facultad de Ciencias, Universidad de Zaragoza, 50009-Zaragoza, Spain

Densities of *N,N*-dimethylformamide or *N,N*-dimethylacetamide + 1-chlorobutane, or + 1-chlorohexane, or + 1-chlorooctane at 298.15 K and at pressures up to 20 MPa have been measured. Isothermal compressibilities of the pure liquids and their mixtures were obtained.

Introduction

Thermodynamic properties for binary mixtures have been studied for testing some theories of the liquid state and for understanding the strength and nature of the intermolecular interactions in these mixtures. With this target, we studied the thermodynamic properties of different halogenated aliphatic compounds and their mixtures.^{1–7} We present here the density, ρ , at 298.15 K and at pressures, p , up to 20 MPa of *N,N*-dimethylformamide or *N,N*-dimethylacetamide + 1-chlorobutane, or + 1-chlorohexane, or + 1-chlorooctane. Amides are of interest because they are used as simple models in biochemistry.^{8–10} The study of liquid mixtures containing amides could contribute to an understanding of complex molecules of biological interest. On the other hand, monohaloalkanes represent a class of technically important compounds, used in industry as intermediates or as final products. This work is part of research to study the intermolecular interactions present in mixtures such as amide + 1-chloroalkane; these interactions could be dipolar as those in the pure 1-chloroalkanes and amides and also acceptor–donor interactions present in the mixtures of these compounds.

Densities, ρ , of the pure liquids (*N,N*-dimethylformamide, *N,N*-dimethylacetamide, and 1-chloroalkane) were measured at 288.15 K, 298.15 K, 308.15 K, and 318.15 K at pressures up to 20 MPa, and from them, thermal expansion coefficients, α , were derived.

The isothermal compressibility, κ_T , of the pure liquids and their mixtures was calculated, and the excess isothermal compressibility, κ_T^E , of the mixtures was derived. As far as we know, there are no previous measurements on these mixtures in the literature.

Experimental Section

Materials. *N,N*-Dimethylformamide (mole fraction > 99 %) and 1-chlorooctane (mole fraction > 98 %) were obtained from Fluka AG Buchs; 1-chlorohexane (mole fraction 99.0 %) was obtained from Aldrich Chem. Co.; and *N,N*-dimethylacetamide (mole fraction \geq 99 %) and 1-chlorobutane (mole fraction \geq 99.8 %) were obtained from Riedel-de Hën. All the liquids were used without further purification.

The measured densities, ρ , and isothermal compressibilities, κ_T , are compared with literature values in Table 1.

* Corresponding author. Telephone number: +34 976 761199. Fax number: +34 976 76 1202. E-mail address: santos@unizar.es.

Table 1. Densities, ρ , and Calculated Isothermal Compressibility, κ_T , Values for the Pure Components at Atmospheric Pressure and 298.15 K and Those from the Literature

component	$\rho/\text{g}\cdot\text{cm}^{-3}$		$10^4\kappa_T/\text{MPa}^{-1}$	
	exptl	lit.	exptl	lit.
<i>N,N</i> -dimethylformamide	0.9438	0.94387 ¹¹	6.51	6.50 ¹¹
<i>N,N</i> -dimethylacetamide	0.9370	0.93634 ¹¹	6.71	6.39 ¹⁵
1-chlorobutane	0.8806	0.88075 ¹²	12.05	12.13 ¹⁶
1-chlorohexane	0.8731	0.87333 ¹³	10.16	10.07 ¹⁷
1-chlorooctane	0.8688	0.86883 ¹⁴	8.98	

Apparatus and Procedure. The mixtures were prepared by mass, and the mole fraction uncertainty was estimated to be $\pm 10^{-4}$. For the pure components, experimental densities, ρ , were measured at 288.15 K, 298.15 K, 308.15 K, and 318.15 K at pressures, p , up to 20 MPa. For binary mixtures, experimental densities were measured at 298.15 K at pressures up to 20 MPa. The measured densities were obtained with a vibrating-tube densimeter with a DMA 512 high-pressure cell. High pressures were generated by a liquid pump (model LC-10 AT of Shimadzu).

The vibrating-tube temperature, T , measured with an Anton-Paar CKT 100 digital thermometer, was stable to better than ± 0.01 K using a Grant LT D6G thermostat. Pressures, p , were measured with a pressure gauge (Gefran) calibrated with another pressure gauge (Druck, model DPI 145).

The forced path mechanical calibration (FPMC)¹⁸ model was used to calibrate the densimeter. 1,2-Dichloroethane was used as a reference liquid¹⁹ for calibration purposes. This liquid was chosen because it is widely studied in the literature and because its density, ρ , is higher than the values of density, ρ , studied in our research. The uncertainty of the reported densities was estimated to be 10^{-4} g·cm⁻³.

Results and Discussion

The measured densities, ρ , for the pure liquids at 288.15 K, 298.15 K, 308.15 K, and 318.15 K and at pressures, p , up to 20 MPa are reported in Table 2. The isothermal compressibilities, κ_T

$$\kappa_T = \rho^{-1}(\partial\rho/\partial P)_T \quad (1)$$

obtained at 288.15 K, 298.15 K, 308.15 K, and 318.15 K for the pure liquids are given in Table 2. Density data were fitted to linear equations, and analytical differentiation was done to obtain the isothermal compressibilities. The uncertainty of the

Table 2. Experimental Values of Density, ρ , and Calculated Isothermal Compressibility, κ_T , for the Pure Components at Pressure, p , and Temperature, T

$T = 288.15 \text{ K}$			$T = 298.15 \text{ K}$			$T = 308.15 \text{ K}$			$T = 318.15 \text{ K}$		
p	ρ	$10^4 \kappa_T$	p	ρ	$10^4 \kappa_T$	p	ρ	$10^4 \kappa_T$	p	ρ	$10^4 \kappa_T$
MPa	$\text{g}\cdot\text{cm}^{-3}$	MPa^{-1}	MPa	$\text{g}\cdot\text{cm}^{-3}$	MPa^{-1}	MPa	$\text{g}\cdot\text{cm}^{-3}$	MPa^{-1}	MPa	$\text{g}\cdot\text{cm}^{-3}$	MPa^{-1}
<i>N,N</i> -Dimethylformamide											
0.1	0.9534	6.14	0.1	0.9438	6.51	0.1	0.9350	6.98	0.1	0.9255	7.54
2.1	0.9545	6.06	2.0	0.9450	6.42	2.0	0.9362	6.86	2.1	0.9269	7.38
4.0	0.9556	5.98	4.1	0.9462	6.34	4.1	0.9376	6.73	4.0	0.9283	7.22
6.1	0.9568	5.89	6.1	0.9474	6.25	6.1	0.9389	6.61	6.0	0.9296	7.06
7.9	0.9578	5.81	8.1	0.9486	6.17	8.1	0.9400	6.49	7.9	0.9308	6.90
9.9	0.9589	5.72	10.1	0.9498	6.08	10.1	0.9412	6.36	10.2	0.9322	6.72
12.1	0.9601	5.63	12.1	0.9510	6.00	12.1	0.9425	6.24	12.0	0.9334	6.57
14.0	0.9612	5.55	14.1	0.9521	5.91	14.3	0.9437	6.11	14.0	0.9345	6.41
16.0	0.9622	5.47	16.3	0.9533	5.83	16.3	0.9449	6.00	16.0	0.9358	6.25
18.0	0.9633	5.38	18.3	0.9543	5.74	18.3	0.9460	5.88	18.0	0.9370	6.09
19.8	0.9643	5.30	20.1	0.9555	5.67	20.2	0.9470	5.76	20.2	0.9381	5.92
<i>N,N</i> -Dimethylacetamide											
0.1	0.9457	5.92	0.1	0.9370	6.71	0.1	0.9279	6.76	0.1	0.9187	7.28
2.0	0.9467	5.87	2.0	0.9381	6.59	2.0	0.9291	6.68	2.0	0.9198	7.18
4.0	0.9478	5.81	4.1	0.9394	6.46	4.1	0.9304	6.60	4.0	0.9212	7.08
6.0	0.9490	5.76	6.1	0.9406	6.34	6.1	0.9316	6.52	6.0	0.9225	6.98
8.1	0.9501	5.70	8.1	0.9418	6.22	8.1	0.9328	6.43	8.0	0.9238	6.88
9.9	0.9511	5.65	10.0	0.9430	6.10	10.1	0.9340	6.35	9.9	0.9250	6.78
12.0	0.9522	5.60	12.1	0.9441	5.98	12.1	0.9353	6.27	12.0	0.9263	6.67
13.9	0.9532	5.55	14.2	0.9453	5.85	14.2	0.9365	6.19	14.0	0.9275	6.57
16.0	0.9543	5.49	16.3	0.9464	5.73	16.3	0.9376	6.10	16.0	0.9287	6.48
18.1	0.9554	5.44	18.4	0.9475	5.60	18.2	0.9387	6.03	18.1	0.9300	6.37
20.0	0.9565	5.38	20.1	0.9486	5.50	20.2	0.9399	5.95	20.0	0.9313	6.27
1-Chlorobutane											
0.1	0.8918	11.05	0.1	0.8806	12.05	0.1	0.8700	12.99	0.1	0.8591	14.59
2.0	0.8936	10.86	2.0	0.8826	11.83	2.0	0.8721	12.72	2.0	0.8615	14.20
4.1	0.8956	10.66	4.1	0.8849	11.58	4.1	0.8744	12.44	4.0	0.8638	13.80
6.1	0.8975	10.46	6.1	0.8868	11.34	6.1	0.8765	12.17	6.1	0.8663	13.38
8.1	0.8994	10.26	8.1	0.8887	11.11	8.1	0.8786	11.90	8.1	0.8687	12.98
10.1	0.9013	10.06	10.1	0.8909	10.87	10.1	0.8808	11.62	10.1	0.8709	12.57
12.1	0.9030	9.87	12.1	0.8928	10.64	12.1	0.8829	11.35	12.1	0.8731	12.18
14.1	0.9049	9.68	14.2	0.8947	10.40	14.2	0.8849	11.08	14.1	0.8751	11.79
16.3	0.9067	9.47	16.2	0.8965	10.18	16.2	0.8868	10.82	16.2	0.8772	11.39
18.4	0.9085	9.27	18.3	0.8985	9.95	18.3	0.8888	10.55	18.4	0.8793	10.97
20.2	0.9103	9.09	20.4	0.9002	9.70	20.2	0.8906	10.29	20.2	0.8812	10.61
1-Chlorohexane											
0.1	0.8827	9.38	0.1	0.8731	10.16	0.1	0.8643	10.73	0.1	0.8551	11.68
2.0	0.8844	9.22	2.0	0.8748	9.98	2.0	0.8661	10.53	2.0	0.8570	11.43
4.1	0.8860	9.06	4.1	0.8766	9.80	4.1	0.8680	10.31	4.0	0.8589	11.19
5.9	0.8875	8.91	6.1	0.8783	9.62	6.1	0.8697	10.11	6.1	0.8609	10.93
8.1	0.8892	8.74	8.1	0.8799	9.44	8.1	0.8715	9.91	8.1	0.8627	10.68
10.1	0.8907	8.59	10.2	0.8817	9.25	10.2	0.8733	9.69	10.1	0.8646	10.44
12.2	0.8923	8.42	12.1	0.8833	9.08	12.1	0.8750	9.50	11.9	0.8661	10.22
14.2	0.8938	8.27	14.2	0.8850	8.90	14.2	0.8767	9.29	14.1	0.8681	9.95
16.2	0.8952	8.12	16.4	0.8866	8.71	16.2	0.8783	9.09	16.1	0.8699	9.70
18.2	0.8967	7.96	18.4	0.8881	8.54	18.3	0.8799	8.89	18.0	0.8714	9.48
20.2	0.8983	7.81	20.2	0.8896	8.37	20.2	0.8815	8.69	20.0	0.8728	9.25
1-Chlorooctane											
0.1	0.8773	8.39	0.1	0.8688	8.98	0.1	0.8614	9.18	0.1	0.8529	10.22
2.0	0.8788	8.27	2.0	0.8702	8.85	2.0	0.8628	9.07	2.0	0.8545	10.03
4.0	0.8802	8.15	4.1	0.8718	8.71	4.0	0.8644	8.97	4.0	0.8562	9.84
6.0	0.8816	8.03	6.1	0.8733	8.58	6.0	0.8659	8.86	6.0	0.8579	9.64
8.0	0.8830	7.91	8.1	0.8748	8.44	7.9	0.8675	8.76	8.0	0.8595	9.45
10.0	0.8844	7.79	10.0	0.8762	8.31	10.1	0.8691	8.64	10.0	0.8612	9.26
11.9	0.8858	7.67	12.1	0.8778	8.17	12.0	0.8705	8.54	12.0	0.8628	9.07
13.9	0.8871	7.55	14.2	0.8793	8.04	14.0	0.8720	8.44	14.0	0.8643	8.88
16.0	0.8884	7.43	16.3	0.8807	7.90	15.9	0.8733	8.34	16.0	0.8658	8.70
18.0	0.8897	7.31	18.3	0.8821	7.77	18.0	0.8748	8.24	18.0	0.8673	8.51
20.1	0.8912	7.18	20.2	0.8834	7.64	20.0	0.8765	8.13	20.1	0.8689	8.31

reported isothermal compressibilities was estimated to be $\pm 10^{-3} \text{ MPa}^{-1}$. For given values of p and T , for example, 2.0 MPa and 298.15 K, the density, ρ , decreases following the sequence *N,N*-dimethylformamide > *N,N*-dimethylacetamide > 1-chlorobutane > 1-chlorohexane > 1-chlorooctane, and the isothermal compressibility, κ_T , increases following the same sequence. This behavior is observed for each studied temperature, T . As an

example, in Figure 1 the isothermal compressibility, κ_T , values obtained for pure liquids at 298.15 K are represented against pressure. From this figure, it is observed that the behavior of the two amides is alike, whereas that of the 1-chloroalkanes is quite different. It can be concluded that the structural and interaction differences between the two amides are less important than those between the 1-chloroalkanes.

Table 3. Experimental Values of Density, ρ , and Calculated Isothermal Compressibility, κ_T , for the Studied Mixtures at Pressure, p , and 298.15 K

<i>N,N</i> -Dimethylformamide (x) + 1-Chlorobutane ($1 - x$)														
$x = 0.0998$			$x = 0.1981$			$x = 0.2988$			$x = 0.4019$			$x = 0.5010$		
p	ρ	$10^4 K_T$	p	ρ	$10^4 K_T$	p	ρ	$10^4 K_T$	p	ρ	$10^4 K_T$	p	ρ	$10^4 K_T$
MPa	$\text{g}\cdot\text{cm}^{-3}$	MPa^{-1}	MPa	$\text{g}\cdot\text{cm}^{-3}$	MPa^{-1}	MPa	$\text{g}\cdot\text{cm}^{-3}$	MPa^{-1}	MPa	$\text{g}\cdot\text{cm}^{-3}$	MPa^{-1}	MPa	$\text{g}\cdot\text{cm}^{-3}$	MPa^{-1}
0.1	0.8855	11.35	0.1	0.8907	10.76	0.1	0.8963	10.36	0.1	0.9023	9.61	0.1	0.9086	9.13
2.0	0.8874	11.15	2.0	0.8925	10.59	2.0	0.8980	10.18	2.0	0.9039	9.45	2.0	0.9101	8.99
4.0	0.8893	10.93	4.0	0.8944	10.41	4.0	0.8998	9.99	4.0	0.9057	9.28	4.0	0.9117	8.84
6.0	0.8912	10.71	6.0	0.8963	10.24	6.0	0.9016	9.79	6.0	0.9073	9.12	6.0	0.9133	8.70
8.0	0.8931	10.50	8.0	0.8981	10.06	8.0	0.9033	9.61	8.0	0.9089	8.95	8.0	0.9149	8.56
10.0	0.8951	10.28	10.0	0.9000	9.88	10.0	0.9051	9.41	10.0	0.9107	8.78	10.0	0.9166	8.41
12.0	0.8969	10.07	12.0	0.9016	9.71	12.0	0.9068	9.23	12.0	0.9122	8.62	11.9	0.9180	8.28
14.0	0.8986	9.86	14.0	0.9034	9.54	14.0	0.9084	9.04	14.0	0.9138	8.45	14.0	0.9195	8.13
16.0	0.9004	9.65	16.0	0.9051	9.37	16.0	0.9101	8.86	16.0	0.9153	8.29	16.0	0.9210	8.00
18.0	0.9021	9.45	18.0	0.9068	9.20	18.0	0.9117	8.68	18.0	0.9167	8.13	18.0	0.9224	7.86
20.0	0.9038	9.23	20.0	0.9087	9.02	20.0	0.9131	8.49	20.0	0.9183	7.97	20.0	0.9240	7.72
$x = 0.6087$			$x = 0.7008$			$x = 0.8163$			$x = 0.9007$					
p	ρ	$10^4 K_T$	p	ρ	$10^4 K_T$	p	ρ	$10^4 K_T$	p	ρ	$10^4 K_T$	p	ρ	$10^4 K_T$
MPa	$\text{g}\cdot\text{cm}^{-3}$	MPa^{-1}	MPa	$\text{g}\cdot\text{cm}^{-3}$	MPa^{-1}	MPa	$\text{g}\cdot\text{cm}^{-3}$	MPa^{-1}	MPa	$\text{g}\cdot\text{cm}^{-3}$	MPa^{-1}	MPa	$\text{g}\cdot\text{cm}^{-3}$	MPa^{-1}
0.1	0.9155	8.50	0.1	0.9218	8.08	0.1	0.9302	7.32	0.1	0.9366	6.92			
2.0	0.9170	8.38	2.0	0.9231	7.97	2.0	0.9315	7.24	2.0	0.9378	6.84			
4.0	0.9185	8.26	4.0	0.9246	7.84	4.0	0.9328	7.17	4.0	0.9391	6.76			
6.0	0.9200	8.13	6.0	0.9260	7.72	6.0	0.9342	7.09	6.0	0.9403	6.68			
8.0	0.9215	8.00	7.9	0.9275	7.60	8.0	0.9354	7.01	8.0	0.9415	6.59			
10.0	0.9230	7.87	10.0	0.9288	7.47	10.0	0.9368	6.93	10.0	0.9429	6.51			
12.0	0.9244	7.75	12.0	0.9303	7.35	12.0	0.9381	6.86	12.0	0.9441	6.43			
14.0	0.9259	7.63	14.0	0.9317	7.23	14.0	0.9393	6.78	14.0	0.9453	6.35			
16.0	0.92721	7.50	16.0	0.9330	7.11	16.0	0.9406	6.71	16.0	0.9464	6.26			
18.1	0.9286	7.38	18.0	0.9343	6.99	18.0	0.9418	6.63	18.0	0.9475	6.18			
20.0	0.9302	7.25	20.0	0.9356	6.87	20.0	0.9433	6.56	20.0	0.9491	6.10			
<i>N,N</i> -Dimethylformamide (x) + 1-Chlorohexane ($1 - x$)														
$x = 0.0970$			$x = 0.2019$			$x = 0.2707$			$x = 0.4007$			$x = 0.5017$		
p	ρ	$10^4 K_T$	p	ρ	$10^4 K_T$	p	ρ	$10^4 K_T$	p	ρ	$10^4 K_T$	p	ρ	$10^4 K_T$
MPa	$\text{g}\cdot\text{cm}^{-3}$	MPa^{-1}	MPa	$\text{g}\cdot\text{cm}^{-3}$	MPa^{-1}	MPa	$\text{g}\cdot\text{cm}^{-3}$	MPa^{-1}	MPa	$\text{g}\cdot\text{cm}^{-3}$	MPa^{-1}	MPa	$\text{g}\cdot\text{cm}^{-3}$	MPa^{-1}
0.1	0.8769	9.68	0.1	0.8812	9.55	0.1	0.8844	9.33	0.1	0.8913	8.91	0.1	0.8974	8.67
2.0	0.8785	9.54	2.0	0.8828	9.39	2.0	0.8859	9.18	2.0	0.8928	8.78	2.0	0.8988	8.54
4.0	0.8802	9.39	4.0	0.8844	9.23	4.0	0.8875	9.03	4.0	0.8943	8.64	4.0	0.9003	8.41
6.0	0.8818	9.25	6.0	0.8860	9.07	6.0	0.8891	8.89	6.0	0.8958	8.50	6.0	0.9018	8.27
8.0	0.8834	9.10	8.0	0.8876	8.91	8.0	0.8907	8.74	8.0	0.8973	8.37	8.0	0.9033	8.14
10.0	0.8851	8.95	10.0	0.8893	8.74	10.0	0.8923	8.58	10.0	0.8988	8.22	10.0	0.9048	8.00
12.0	0.8867	8.81	12.0	0.8908	8.58	12.0	0.8938	8.44	12.0	0.900	8.09	12.0	0.9063	7.87
14.0	0.8882	8.67	14.0	0.8923	8.42	14.0	0.8952	8.29	14.0	0.9018	7.95	14.0	0.9076	7.74
16.0	0.8897	8.53	16.0	0.8938	8.26	16.0	0.8967	8.15	16.0	0.9032	7.82	16.0	0.9091	7.61
18.0	0.8912	8.39	18.0	0.8953	8.11	18.0	0.8981	8.01	18.0	0.9046	7.69	18.0	0.9104	7.48
20.0	0.8928	8.25	20.0	0.8966	7.95	20.0	0.8996	7.86	20.0	0.9060	7.55	20.0	0.9118	7.35
$x = 0.6155$			$x = 0.6988$			$x = 0.7993$			$x = 0.9018$					
p	ρ	$10^4 K_T$	p	ρ	$10^4 K_T$	p	ρ	$10^4 K_T$	p	ρ	$10^4 K_T$	p	ρ	$10^4 K_T$
MPa	$\text{g}\cdot\text{cm}^{-3}$	MPa^{-1}	MPa	$\text{g}\cdot\text{cm}^{-3}$	MPa^{-1}	MPa	$\text{g}\cdot\text{cm}^{-3}$	MPa^{-1}	MPa	$\text{g}\cdot\text{cm}^{-3}$	MPa^{-1}	MPa	$\text{g}\cdot\text{cm}^{-3}$	MPa^{-1}
0.1	0.9054	8.20	0.1	0.9127	7.91	0.1	0.9218	7.41	0.1	0.9326	6.93			
2.0	0.9069	8.10	2.0	0.9140	7.80	2.0	0.9231	7.32	2.0	0.9338	6.85			
4.0	0.9084	7.99	4.0	0.9155	7.69	4.0	0.9244	7.22	4.0	0.9351	6.77			
6.0	0.9098	7.89	6.0	0.9168	7.57	6.0	0.9257	7.13	6.0	0.9364	6.69			
8.0	0.9112	7.78	8.0	0.9182	7.46	8.0	0.9270	7.03	8.0	0.9376	6.61			
10.0	0.9127	7.67	10.0	0.9196	7.34	10.0	0.9284	6.94	10.0	0.9389	6.52			
11.9	0.9140	7.57	12.0	0.9209	7.23	12.0	0.9297	6.84	12.0	0.9401	6.44			
14.0	0.9154	7.46	14.0	0.9223	7.12	13.9	0.9309	6.76	14.0	0.9413	6.36			
16.0	0.9168	7.36	16.0	0.923	7.01	16.0	0.9321	6.66	16.0	0.9425	6.28			
18.0	0.9181	7.26	18.0	0.9249	6.90	17.9	0.9333	6.58	18.0	0.9436	6.20			
20.0	0.9195	7.15	20.0	0.9262	6.78	20.0	0.9346	6.48	20.0	0.9449	6.12			

Table 3. (Continued)

<i>N,N</i> -Dimethylformamide (<i>x</i>) + 1-Chlorooctane (1 - <i>x</i>)														
<i>x</i> = 0.1042			<i>x</i> = 0.2009			<i>x</i> = 0.2669			<i>x</i> = 0.4023			<i>x</i> = 0.4992		
<i>p</i>	ρ	$10^4 K_T$	<i>p</i>	ρ	$10^4 K_T$	<i>p</i>	ρ	$10^4 K_T$	<i>p</i>	ρ	$10^4 K_T$	<i>p</i>	ρ	$10^4 K_T$
MPa	$\text{g}\cdot\text{cm}^{-3}$	MPa^{-1}	MPa	$\text{g}\cdot\text{cm}^{-3}$	MPa^{-1}	MPa	$\text{g}\cdot\text{cm}^{-3}$	MPa^{-1}	MPa	$\text{g}\cdot\text{cm}^{-3}$	MPa^{-1}	MPa	$\text{g}\cdot\text{cm}^{-3}$	MPa^{-1}
0.1	0.8717	8.87	0.1	0.8753	8.80	0.1	0.8779	8.59	0.1	0.8842	8.53	0.1	0.8897	8.35
2.0	0.8731	8.74	2.0	0.8767	8.67	2.0	0.8794	8.45	2.0	0.8856	8.39	2.0	0.8910	8.22
4.0	0.8747	8.60	4.0	0.8782	8.53	4.0	0.8808	8.31	4.0	0.8871	8.24	4.0	0.8925	8.08
6.0	0.8761	8.46	6.0	0.8797	8.39	6.0	0.8823	8.17	6.0	0.8885	8.09	6.0	0.8939	7.94
7.9	0.8776	8.33	8.0	0.8811	8.25	8.0	0.8837	8.03	8.0	0.8899	7.94	8.0	0.8953	7.80
10.0	0.8791	8.18	10.0	0.8827	8.10	10.0	0.8852	7.89	10.0	0.8914	7.79	10.0	0.8968	7.65
12.0	0.8806	8.04	12.0	0.8841	7.97	12.0	0.8866	7.75	12.0	0.8928	7.64	12.0	0.8981	7.51
14.0	0.8820	7.91	13.9	0.8854	7.84	14.0	0.8879	7.61	14.0	0.8941	7.49	14.0	0.8994	7.37
15.9	0.8832	7.78	16.0	0.8864	7.69	15.9	0.8892	7.48	16.0	0.8954	7.35	15.9	0.9007	7.24
18.0	0.8846	7.64	18.0	0.8882	7.56	18.0	0.8906	7.34	17.9	0.8967	7.21	18.0	0.9020	7.10
20.0	0.8860	7.50	20.1	0.8896	7.41	20.0	0.8918	7.20	20.0	0.8980	7.05	20.0	0.9033	6.96
<i>x</i> = 0.6035			<i>x</i> = 0.6982			<i>x</i> = 0.8002			<i>x</i> = 0.9001					
<i>p</i>	ρ	$10^4 K_T$	<i>p</i>	ρ	$10^4 K_T$	<i>p</i>	ρ	$10^4 K_T$	<i>p</i>	ρ	$10^4 K_T$	<i>p</i>	ρ	$10^4 K_T$
MPa	$\text{g}\cdot\text{cm}^{-3}$	MPa^{-1}	MPa	$\text{g}\cdot\text{cm}^{-3}$	MPa^{-1}	MPa	$\text{g}\cdot\text{cm}^{-3}$	MPa^{-1}	MPa	$\text{g}\cdot\text{cm}^{-3}$	MPa^{-1}	MPa	$\text{g}\cdot\text{cm}^{-3}$	MPa^{-1}
0.1	0.8968	7.91	0.1	0.9047	7.75	0.1	0.9149	7.41	0.1	0.9277	6.96	0.1	0.9277	6.96
2.0	0.8982	7.82	2.0	0.9060	7.64	2.0	0.9161	7.31	2.0	0.9288	6.88	2.0	0.9288	6.88
4.0	0.8996	7.72	4.0	0.9075	7.52	4.0	0.9174	7.21	4.0	0.9302	6.79	4.0	0.9302	6.79
6.0	0.9009	7.63	6.0	0.9088	7.40	6.0	0.9188	7.10	6.0	0.9314	6.71	6.0	0.9314	6.71
8.0	0.9023	7.53	8.0	0.9101	7.28	8.0	0.9201	7.00	8.0	0.9326	6.62	8.0	0.9326	6.62
10.0	0.9037	7.43	10.0	0.9114	7.16	9.9	0.9214	6.89	10.0	0.9339	6.53	10.0	0.9339	6.53
12.0	0.9050	7.34	12.0	0.9127	7.05	12.0	0.9227	6.79	12.0	0.9351	6.44	12.0	0.9351	6.44
14.0	0.9063	7.24	14.0	0.9140	6.93	14.0	0.9240	6.68	14.0	0.9363	6.36	14.0	0.9363	6.36
16.0	0.9077	7.15	16.0	0.91538	6.82	16.0	0.9250	6.58	16.0	0.9376	6.27	16.0	0.9376	6.27
18.0	0.9089	7.06	18.0	0.9165	6.70	18.0	0.9263	6.48	17.9	0.9386	6.19	17.9	0.9386	6.19
20.0	0.9103	6.96	20.0	0.9177	6.59	20.0	0.9275	6.38	20.0	0.9398	6.10	20.0	0.9398	6.10
<i>N,N</i> -Dimethylacetamide (<i>x</i>) + 1-Chlorobutane (1 - <i>x</i>)														
<i>x</i> = 0.0967			<i>x</i> = 0.2105			<i>x</i> = 0.2984			<i>x</i> = 0.4019			<i>x</i> = 0.4990		
<i>p</i>	ρ	$10^4 K_T$	<i>p</i>	ρ	$10^4 K_T$	<i>p</i>	ρ	$10^4 K_T$	<i>p</i>	ρ	$10^4 K_T$	<i>p</i>	ρ	$10^4 K_T$
MPa	$\text{g}\cdot\text{cm}^{-3}$	MPa^{-1}	MPa	$\text{g}\cdot\text{cm}^{-3}$	MPa^{-1}	MPa	$\text{g}\cdot\text{cm}^{-3}$	MPa^{-1}	MPa	$\text{g}\cdot\text{cm}^{-3}$	MPa^{-1}	MPa	$\text{g}\cdot\text{cm}^{-3}$	MPa^{-1}
0.1	0.8856	11.41	0.1	0.8918	10.51	0.1	0.8967	10.10	0.1	0.9025	9.59	0.1	0.9081	8.91
2.0	0.8875	11.21	2.0	0.8936	10.36	2.0	0.8984	9.92	2.0	0.9041	9.43	2.0	0.9096	8.77
4.0	0.8895	11.00	4.0	0.8955	10.20	4.0	0.9001	9.74	4.0	0.9058	9.27	4.0	0.9112	8.62
6.0	0.8914	10.79	6.0	0.8972	10.03	6.0	0.9019	9.56	6.0	0.90745	9.10	6.0	0.9127	8.48
8.0	0.8933	10.58	8.0	0.8991	9.87	8.0	0.9036	9.38	8.0	0.9090	8.94	8.0	0.9142	8.34
10.0	0.8953	10.37	10.0	0.9009	9.71	10.0	0.9053	9.19	10.0	0.9109	8.77	10.0	0.9158	8.19
12.0	0.8971	10.16	12.0	0.9026	9.55	12.0	0.9070	9.02	11.9	0.9123	8.62	12.0	0.9173	8.04
14.0	0.8989	9.96	14.0	0.9044	9.39	14.0	0.9086	8.84	13.9	0.9139	8.46	14.0	0.9188	7.90
16.0	0.9006	9.76	16.0	0.9061	9.24	16.0	0.9102	8.67	16.0	0.9154	8.29	16.0	0.9202	7.76
17.9	0.9023	9.57	17.9	0.9076	9.09	18.0	0.9117	8.49	18.0	0.9169	8.13	18.0	0.9216	7.63
20.0	0.9042	9.35	20.0	0.9093	8.92	20.1	0.9135	8.30	20.1	0.9185	7.96	20.1	0.9231	7.47
<i>x</i> = 0.5947			<i>x</i> = 0.6992			<i>x</i> = 0.7997			<i>x</i> = 0.9015					
<i>p</i>	ρ	$10^4 K_T$	<i>p</i>	ρ	$10^4 K_T$	<i>p</i>	ρ	$10^4 K_T$	<i>p</i>	ρ	$10^4 K_T$	<i>p</i>	ρ	$10^4 K_T$
MPa	$\text{g}\cdot\text{cm}^{-3}$	MPa^{-1}	MPa	$\text{g}\cdot\text{cm}^{-3}$	MPa^{-1}	MPa	$\text{g}\cdot\text{cm}^{-3}$	MPa^{-1}	MPa	$\text{g}\cdot\text{cm}^{-3}$	MPa^{-1}	MPa	$\text{g}\cdot\text{cm}^{-3}$	MPa^{-1}
0.1	0.9133	8.41	0.1	0.9192	7.80	0.1	0.9247	7.48	0.1	0.9304	6.96	0.1	0.9304	6.96
2.0	0.9148	8.28	2.0	0.9206	7.72	2.0	0.9259	7.38	2.0	0.9316	6.88	2.0	0.9316	6.88
4.0	0.9162	8.14	4.0	0.9221	7.63	4.0	0.9273	7.27	4.0	0.9329	6.80	4.0	0.9329	6.80
6.0	0.9178	8.01	6.0	0.9234	7.54	6.0	0.9287	7.17	6.0	0.9341	6.73	6.0	0.9341	6.73
8.0	0.9192	7.87	8.0	0.9248	7.45	8.0	0.9300	7.06	8.0	0.9355	6.65	8.0	0.9355	6.65
10.0	0.9207	7.73	10.0	0.9262	7.36	10.0	0.9313	6.95	10.0	0.9367	6.56	10.0	0.9367	6.56
12.0	0.9221	7.60	12.0	0.9276	7.28	12.0	0.9326	6.85	12.0	0.9379	6.49	12.0	0.9379	6.49
14.0	0.9235	7.46	14.0	0.9290	7.19	14.0	0.9338	6.75	14.0	0.9390	6.41	14.0	0.9390	6.41
16.0	0.9248	7.33	16.0	0.9303	7.11	15.9	0.9351	6.65	16.0	0.9403	6.33	16.0	0.9403	6.33
18.0	0.9262	7.20	18.0	0.9315	7.02	17.9	0.9362	6.55	18.0	0.9415	6.26	18.0	0.9415	6.26
20.1	0.9276	7.06	20.0	0.9329	6.93	20.0	0.9377	6.44	20.0	0.9426	6.18	20.0	0.9426	6.18

Table 3. (Continued)

<i>N,N</i> -Dimethylacetamide (<i>x</i>) + 1-Chlorohexane (1 - <i>x</i>)														
<i>x</i> = 0.0952			<i>x</i> = 0.2003			<i>x</i> = 0.3011			<i>x</i> = 0.4036			<i>x</i> = 0.5030		
<i>p</i>	ρ	$10^4 K_T$	<i>p</i>	ρ	$10^4 K_T$	<i>p</i>	ρ	$10^4 K_T$	<i>p</i>	ρ	$10^4 K_T$	<i>p</i>	ρ	$10^4 K_T$
MPa	$\text{g}\cdot\text{cm}^{-3}$	MPa^{-1}	MPa	$\text{g}\cdot\text{cm}^{-3}$	MPa^{-1}	MPa	$\text{g}\cdot\text{cm}^{-3}$	MPa^{-1}	MPa	$\text{g}\cdot\text{cm}^{-3}$	MPa^{-1}	MPa	$\text{g}\cdot\text{cm}^{-3}$	MPa^{-1}
0.1	0.8771	9.88	0.1	0.8816	9.50	0.1	0.8864	9.09	0.1	0.8919	8.86	0.1	0.8975	8.50
2.0	0.8787	9.70	2.0	0.8832	9.35	2.0	0.8880	8.98	2.0	0.89341	8.73	2.0	0.8990	8.38
4.0	0.8804	9.51	4.0	0.8848	9.19	4.0	0.8895	8.85	4.0	0.8950	8.59	4.0	0.9004	8.25
6.0	0.8820	9.33	6.0	0.8864	9.03	6.0	0.8912	8.73	6.0	0.8965	8.45	6.0	0.9019	8.12
8.0	0.8836	9.14	8.0	0.8880	8.88	8.0	0.8927	8.61	8.0	0.8980	8.32	8.0	0.9034	8.00
10.0	0.8853	8.95	10.0	0.8896	8.71	10.0	0.8943	8.48	10.0	0.8996	8.18	10.0	0.9049	7.86
12.0	0.8868	8.77	12.0	0.8912	8.56	12.0	0.8958	8.36	12.0	0.9010	8.04	12.0	0.9063	7.74
14.0	0.8884	8.59	14.0	0.89278	8.41	14.0	0.8972	8.24	14.0	0.9024	7.91	14.0	0.9076	7.61
16.0	0.8899	8.41	16.0	0.8941	8.26	16.0	0.8987	8.12	16.0	0.9038	7.77	16.0	0.9090	7.49
18.0	0.8913	8.23	18.0	0.8956	8.10	18.0	0.9001	8.01	18.0	0.9052	7.64	18.0	0.9103	7.37
20.0	0.8929	8.04	20.0	0.8972	7.95	20.0	0.9018	7.88	20.1	0.9068	7.50	20.0	0.9118	7.24

<i>N,N</i> -Dimethylacetamide (<i>x</i>) + 1-Chlorooctane (1 - <i>x</i>)														
<i>x</i> = 0.6051			<i>x</i> = 0.6992			<i>x</i> = 0.8013			<i>x</i> = 0.8996					
<i>p</i>	ρ	$10^4 K_T$	<i>p</i>	ρ	$10^4 K_T$	<i>p</i>	ρ	$10^4 K_T$	<i>p</i>	ρ	$10^4 K_T$	<i>p</i>	ρ	$10^4 K_T$
MPa	$\text{g}\cdot\text{cm}^{-3}$	MPa^{-1}	MPa	$\text{g}\cdot\text{cm}^{-3}$	MPa^{-1}	MPa	$\text{g}\cdot\text{cm}^{-3}$	MPa^{-1}	MPa	$\text{g}\cdot\text{cm}^{-3}$	MPa^{-1}	MPa	$\text{g}\cdot\text{cm}^{-3}$	MPa^{-1}
0.1	0.9038	8.09	0.1	0.9104	7.62	0.1	0.9184	7.34	0.1	0.9268	7.03	0.1	0.9268	7.03
2.0	0.9052	7.98	2.0	0.9117	7.58	2.0	0.9197	7.26	2.0	0.9281	6.93	2.0	0.9281	6.93
4.0	0.9067	7.86	4.0	0.9131	7.53	4.0	0.9210	7.18	4.0	0.9293	6.82	4.0	0.9293	6.82
6.0	0.9081	7.75	6.0	0.9145	7.49	6.0	0.9223	7.10	6.0	0.9305	6.71	6.0	0.9305	6.71
8.0	0.9095	7.64	8.0	0.9159	7.45	8.0	0.9236	7.02	8.0	0.9317	6.61	8.0	0.9317	6.61
10.0	0.9109	7.52	10.0	0.9173	7.40	10.0	0.9250	6.94	10.0	0.9331	6.50	10.0	0.9331	6.50
12.0	0.9123	7.41	11.9	0.9186	7.36	12.0	0.9263	6.86	12.0	0.9343	6.40	12.0	0.9343	6.40
14.0	0.9136	7.30	14.0	0.9199	7.32	14.0	0.9275	6.78	14.0	0.9355	6.29	14.0	0.9355	6.29
16.0	0.9149	7.19	16.0	0.9212	7.27	16.0	0.9287	6.70	16.0	0.9366	6.19	16.0	0.9366	6.19
18.0	0.9162	7.08	18.0	0.9226	7.23	18.0	0.9299	6.63	18.0	0.9377	6.09	18.0	0.9377	6.09
20.0	0.91770	6.96	20.0	0.9240	7.18	20.0	0.9313	6.54	20.1	0.9390	5.98	20.1	0.9390	5.98

<i>N,N</i> -Dimethylacetamide (<i>x</i>) + 1-Chlorooctane (1 - <i>x</i>)														
<i>x</i> = 0.0963			<i>x</i> = 0.2006			<i>x</i> = 0.2938			<i>x</i> = 0.4059			<i>x</i> = 0.5022		
<i>p</i>	ρ	$10^4 K_T$	<i>p</i>	ρ	$10^4 K_T$	<i>p</i>	ρ	$10^4 K_T$	<i>p</i>	ρ	$10^4 K_T$	<i>p</i>	ρ	$10^4 K_T$
MPa	$\text{g}\cdot\text{cm}^{-3}$	MPa^{-1}	MPa	$\text{g}\cdot\text{cm}^{-3}$	MPa^{-1}	MPa	$\text{g}\cdot\text{cm}^{-3}$	MPa^{-1}	MPa	$\text{g}\cdot\text{cm}^{-3}$	MPa^{-1}	MPa	$\text{g}\cdot\text{cm}^{-3}$	MPa^{-1}
0.1	0.8720	8.91	0.1	0.8758	8.65	0.1	0.8796	8.59	0.1	0.88487	8.55	0.1	0.8902	8.21
2.0	0.8735	8.78	2.0	0.8772	8.54	2.0	0.8811	8.48	2.0	0.8862	8.39	2.0	0.8915	8.09
4.0	0.8750	8.64	4.0	0.8787	8.42	4.0	0.8825	8.36	4.0	0.8876	8.24	4.0	0.8929	7.97
6.0	0.8765	8.50	6.0	0.8802	8.31	6.0	0.8840	8.23	6.0	0.8890	8.08	6.0	0.8943	7.85
8.0	0.8779	8.36	8.0	0.8816	8.19	8.0	0.8855	8.11	8.0	0.8904	7.92	8.0	0.8958	7.73
10.0	0.8795	8.21	10.0	0.8831	8.07	10.0	0.8870	7.99	10.0	0.8920	7.76	10.0	0.8973	7.60
12.0	0.8809	8.07	12.0	0.8845	7.96	12.0	0.8883	7.87	12.0	0.8933	7.60	12.0	0.8985	7.48
14.0	0.8823	7.93	14.0	0.8859	7.85	14.0	0.8897	7.75	14.0	0.8946	7.45	14.0	0.8999	7.37
16.0	0.8837	7.80	16.0	0.8873	7.74	16.0	0.8911	7.63	16.0	0.8960	7.30	16.0	0.9011	7.25
18.0	0.8850	7.66	18.0	0.8886	7.63	18.0	0.8924	7.52	18.0	0.8973	7.15	18.0	0.9024	7.13
20.0	0.8865	7.52	20.0	0.8901	7.51	20.0	0.8939	7.39	20.0	0.8985	6.99	20.0	0.9038	7.01

<i>N,N</i> -Dimethylacetamide (<i>x</i>) + 1-Chlorooctane (1 - <i>x</i>)														
<i>x</i> = 0.6020			<i>x</i> = 0.7005			<i>x</i> = 0.8075			<i>x</i> = 0.9010					
<i>p</i>	ρ	$10^4 K_T$	<i>p</i>	ρ	$10^4 K_T$	<i>p</i>	ρ	$10^4 K_T$	<i>p</i>	ρ	$10^4 K_T$	<i>p</i>	ρ	$10^4 K_T$
MPa	$\text{g}\cdot\text{cm}^{-3}$	MPa^{-1}	MPa	$\text{g}\cdot\text{cm}^{-3}$	MPa^{-1}	MPa	$\text{g}\cdot\text{cm}^{-3}$	MPa^{-1}	MPa	$\text{g}\cdot\text{cm}^{-3}$	MPa^{-1}	MPa	$\text{g}\cdot\text{cm}^{-3}$	MPa^{-1}
0.1	0.8967	7.90	0.1	0.9041	7.73	0.1	0.9137	7.31	0.1	0.9236	6.94	0.1	0.9236	6.94
2.0	0.8981	7.79	2.0	0.9054	7.62	2.0	0.9149	7.21	2.0	0.9248	6.85	2.0	0.9248	6.85
4.0	0.8994	7.69	4.0	0.9068	7.51	4.0	0.9163	7.10	4.0	0.9261	6.76	4.0	0.9261	6.76
6.0	0.9008	7.58	6.0	0.9081	7.40	6.0	0.9175	6.99	6.0	0.9273	6.67	6.0	0.9273	6.67
8.0	0.9022	7.47	8.0	0.9094	7.28	8.0	0.9188	6.88	8.0	0.9285	6.58	8.0	0.9285	6.58
10.0	0.9036	7.36	10.0	0.9108	7.16	10.0	0.9200	6.77	10.0	0.9298	6.49	10.0	0.9298	6.49
12.0	0.9049	7.25	12.0	0.9121	7.05	12.0	0.9213	6.66	12.0	0.9310	6.40	12.0	0.9310	6.40
14.0	0.9061	7.15	14.0	0.9134	6.94	14.0	0.9224	6.56	14.0	0.9322	6.31	14.0	0.9322	6.31
15.9	0.9074	7.05	16.0	0.9146	6.83	16.0	0.9237	6.45	16.0	0.9333	6.22	16.0	0.9333	6.22
18.0	0.9087	6.94	18.0	0.9158	6.72	18.0	0.9249	6.35	18.0	0.9344	6.13	18.0	0.9344	6.13
20.0	0.9100	6.83	20.0	0.9171	6.61	20.0	0.9261	6.24	20.0	0.9357	6.04	20.0	0.9357	6.04

Thermal expansion coefficients, α , are obtained by using the following equation

$$\alpha = -\rho^{-1}(\delta\rho/\delta T)_p \quad (2)$$

Density data were fitted to linear equations, and analytical differentiation was done to obtain thermal expansion coef-

ficients. The uncertainty of the reported thermal expansion coefficients was estimated to be $\pm 10^{-3} \text{ K}^{-1}$. We have obtained the following values of α for the pure liquids at 298.15 K and 0.1 MPa: α (*N,N*-dimethylformamide) = $9.8 \cdot 10^{-4} \text{ K}^{-1}$; α (*N,N*-dimethylacetamide) = $9.6 \cdot 10^{-4} \text{ K}^{-1}$; α (1-chlorobutane) = $1.23 \cdot 10^{-3} \text{ K}^{-1}$; α (1-chlorohexane) = $1.05 \cdot 10^{-3} \text{ K}^{-1}$; and α (1-chlorooctane) = $9.3 \cdot 10^{-4} \text{ K}^{-1}$. The values found in the

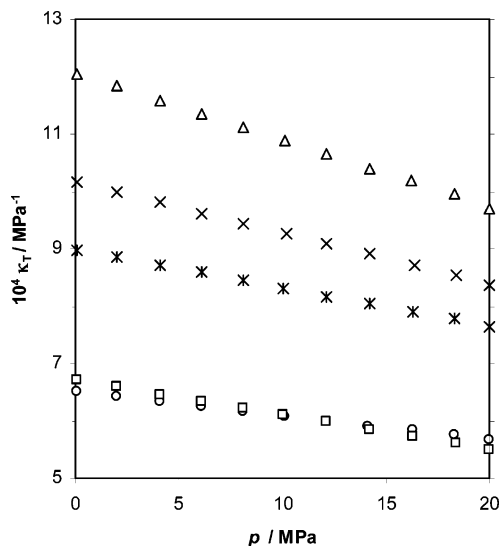


Figure 1. Isothermal compressibility, κ_T , of the pure components plotted against pressure at $T = 298.15$ K. O, *N,N*-dimethylformamide; □, *N,N*-dimethylacetamide; Δ, 1-chlorobutane; ×, 1-chlorohexane; *, 1-chlorooctane.

literature for the pure liquids are α (*N,N*-dimethylformamide) = $9.75 \cdot 10^{-4} \text{ K}^{-1}$,²⁰ α (*N,N*-dimethylacetamide) = $9.60 \cdot 10^{-4} \text{ K}^{-1}$,²¹ α (1-chlorohexane) = $1.092 \cdot 10^{-3} \text{ K}^{-1}$,²² and α (1-chlorooctane) = $9.50 \cdot 10^{-4} \text{ K}^{-1}$.²³ We did not find the value of the thermal expansion coefficient, α , for 1-chlorobutane in the literature. As can be seen, there is a good agreement between the values of thermal expansion coefficients, α , obtained by us and literature values.

For *N,N*-dimethylformamide or *N,N*-dimethylacetamide + 1-chlorobutane, or + 1-chlorohexane, or + 1-chlorooctane mixtures, experimental densities, ρ , and isothermal compressibilities, κ_T , calculated with eq 1 are presented in Table 3. From the values of Table 3, it can be observed that the values of isothermal compressibility, κ_T , decrease as the length of the aliphatic chain of the 1-chloroalkane of the mixture increases. The same behavior is found in the literature for series of nonsaturated hydrocarbons,²⁴ alcohols,^{17,25} etc. However, a different behavior is found for series such as *n*-alkane,²⁶ for example. Thereby, we can conclude that even though $(\delta V^E/\delta P)_T$ and the isothermal compressibility, κ_T , are related properties, their behavior in function of the molecular structure related parameters, such as, for example, the length of the aliphatic chain, can be different. The reason could be that the isothermal compressibility, κ_T , depends on the molar volume of the studied system which involves the structural effects in the systems, besides the molecular interactions.

The “excess” compressibility, κ_T^E , defined as

$$\kappa_T^E = -V^{-1}(\delta V^E/\delta P)_T = \kappa - \phi_1\kappa_1 - \phi_2\kappa_2 \quad (3)$$

where ϕ_1 and ϕ_2 are the volume fractions, is widely used. The values for κ_T^E , obtained with eq 3, are represented against the mole fraction of the amide, x , in Figures 2 and 3.

The excess isothermal compressibility, κ_T^E , values increase in the following sequence: *N,N*-dimethylformamide or *N,N*-dimethylacetamide + 1-chlorobutane < *N,N*-dimethylformamide or *N,N*-dimethylacetamide + 1-chlorohexane < *N,N*-dimethylformamide or *N,N*-dimethylacetamide + 1-chlorooctane. From the experimental data presented here, it can be seen that for a given chloroalkane the difference between the behavior of the

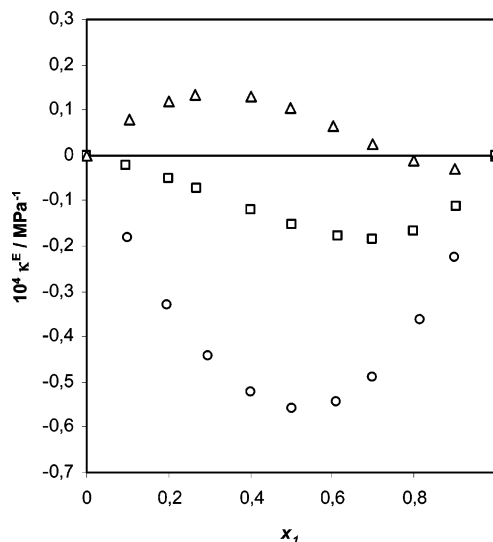


Figure 2. Excess isothermal compressibility, κ_T^E , represented against mole fraction of *N,N*-dimethylformamide for the mixtures with: O, 1-chlorobutane; or □, 1-chlorohexane; or Δ, 1-chlorooctane at $T = 298.15$ K.

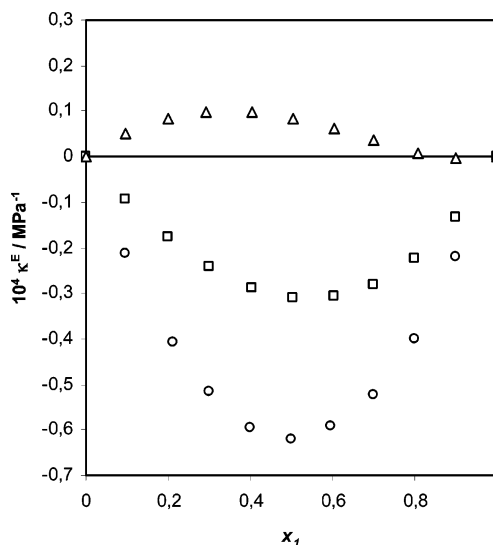


Figure 3. Excess isothermal compressibility, κ_T^E , represented against mole fraction of *N,N*-dimethylacetamide for the mixtures with: O, 1-chlorobutane; or □, 1-chlorohexane; Δ, or 1-chlorooctane at $T = 298.15$ K.

mixtures with the two studied amides is very small as the physical property values for these amides are alike.

We conclude that the excess isothermal compressibility, κ_T^E , values for the mixtures *N,N*-dimethylformamide or *N,N*-dimethylacetamide with 1-chlorobutane show the largest deviation from ideality, and the mixtures with 1-chlorooctane show the smallest deviation from ideality.

In any case, the explanation of the volumetric behavior of the studied mixtures is difficult from only this kind of measurements, given the variety and complexity of the interactional and geometric effects present in the pure 1-chloroalkanes and amides such as, for example, the dipole–dipole interactions and the specific acceptor–donor interactions present in the mixtures.

Literature Cited

- (1) Blanco, S. T.; Artal, M.; Fernández, J.; Muñoz Embid, J.; Otín, S. Excess enthalpies of dibromoalkane + tetrachloromethane mixtures. Measurement and analysis in terms of group contributions (DIS-QUAC). *J. Chem. Eng. Data* **1993**, *38*, 587–588.

- (2) Boquera, J.; Artal, M.; Velasco, I.; Otín, S. Excess volumes of binary mixtures containing polyalkanes at the temperature $T = 298.15$ K. *J. Chem. Thermodyn.* **1998**, *30*, 161–166.
- (3) Jarne, C.; Artal, M.; Muñoz Embid, J.; Velasco, I.; Otín, S. Temperature and pressure dependence of the volumetric properties of binary mixtures containing polyhaloalkanes. *Can. J. Chem.* **1999**, *77*, 2046–2052.
- (4) García-Giménez, P.; Gil-Hernández, V.; Artal, M.; Muñoz Embid, J.; Otín, S. Isothermal vapour–liquid equilibria of ethyl acetate + dibromomethane or + bromochloromethane or + 1,2-dichloroethane or + 1-bromo-2-chloroethane at $T = 313.15$ K. *J. Chem. Eng. Data* **2004**, *49*, 1574–1576.
- (5) Gil-Hernández, V.; García-Giménez, P.; Otín, S.; Artal, M.; Velasco, I. (Vapour+liquid) equilibria for the binary mixtures (1-propanol + dibromomethane, or + bromochloromethane, or + 1,2-dichloroethane, or + 1-bromo-2-chloroethane) at $T = 313.15$ K. *J. Chem. Thermodyn.* **2005**, *37*, 7–12.
- (6) García-Giménez, P.; Gil-Hernández, V.; Velasco, I.; Muñoz Embid, J.; Otín, S. Temperature and pressure dependence of the volumetric properties of binary liquid mixtures containing dihaloalkanes. *Int. J. Thermophys.* **2005**, *26*, 665–678.
- (7) Gil-Hernández, V.; García-Giménez, P.; Muñoz Embid, J.; Artal, M.; Velasco, I. Temperature and pressure dependence of the volumetric properties of binary mixtures containing 1-propanol and dihaloalkanes. *Phys. Chem. Liq.* **2005**, *43*, 523–533.
- (8) Lilley, T. H. In *Physical properties of amino acid solutions. The biochemistry of the amino acids*; Barret, G. C., Ed.; Chapman and Hall: New York, 1985; pp 591–624.
- (9) Lilley, T. H. In *Water and aqueous solutions*, Colston papers No. 37; Neilson G. W., Enderby, J. E., Hilger, A., Eds.; Bristol: 1986; pp 265–276.
- (10) Lilley, T. H. In *Biochemical Thermodynamics*, 2nd ed.; Jones, M. N., Ed.; Elsevier: New York, 1988; pp 1–52.
- (11) Riddick, J. A.; Bunger, W. B.; Sakano, T. K. *Organic Solvents. Physical properties and methods of purification. Techniques of chemistry, II*, 4th ed.; Wiley-Interscience: New York, 1986.
- (12) Morávková, L.; Linek, J. Temperature dependence of the excess molar volume of (heptane+1-chloroalkane). *J. Chem. Thermodyn.* **2002**, *34*, 1387–1395.
- (13) Ortega, J.; Matos, J. S. Excess molar volumes of (ethyl formate or ethyl acetate + 1-chloroalkane) at 298.15 K. *J. Chem. Eng. Data* **1987**, *32*, 464–466.
- (14) Delitala, C.; Marongiu, B.; Porcedda, S.; Rosa, A. Thermodynamic properties of binary mixtures containing alkanenitriles II. Excess volumes of alkanenitriles + 1-chloroalkanes. *Fluid Phase Equilib.* **1996**, *126*, 195–202.
- (15) Inoue, H.; Ogawa, H.; Tamura, K.; Murakami, S. Thermodynamic properties of dimethylacetamide + alkane mixtures at 298.15 K. I. Excess molar enthalpy, excess molar volume and excess isothermal compressibility. *Netsu Sokutei* **1991**, *18*, 3–8.
- (16) Matilla, A. D.; Tardajos, G.; Junquera, E.; Aicart, E. Thermodynamic properties for binary liquid mixtures of 1-chlorobutane + n-alkanes. *J. Solution Chem.* **1991**, *20*, 805–816.
- (17) Tardajos, G.; Junquera, E.; Aicart, E. Isothermal compressibility and isobaric thermal expansivity of linear and branched hexanols at 298.15 K. *J. Chem. Eng. Data* **1994**, *39*, 349–350.
- (18) Bouchot, C.; Richon, D. An enhanced method to calibrate vibrating tube densimeters. *Fluid Phase Equilib.* **2001**, *191*, 189–208.
- (19) TRC, *Thermodynamics Tables Non-Hydrocarbons*; Thermodynamics Research Center, The Texas A&M University System: College Station, TX, 1994.
- (20) Scharlin, P.; Steinby, K.; Domanska, U. Volumetric properties of binary mixtures of N,N-dimethylformamide with water or water-d(2) at temperatures from 277.13 K to 318.15 K. *J. Chem. Thermodyn.* **2002**, *34*, 927–957.
- (21) Scharlin, P.; Steinby, K.; Domanska, U. Excess thermodynamic properties of binary mixtures of N,N-dimethylacetamide with water or water-d(2) at temperatures from 277.13 K to 318.15 K. *J. Chem. Thermodyn.* **2003**, *35*, 279–300.
- (22) Bolotnikov, M. F.; Neruchev, Y. A. Temperature dependence of the thermophysical properties of 1-chlorohexane, 1-iodohexane, 1-iodoheptane, and 1-chlorononane at saturation condition. *J. Chem. Eng. Data* **2004**, *49*, 202–207.
- (23) Matos, J. S.; Trenzado, J. L.; Alcalde, R. Volumetric properties and viscosities of the ternary system methyl butanoate plus n-heptane + 1-chlorooctane and its binary constituents in the temperature range from 283.15 to 313.15 K. *Fluid Phase Equilib.* **2002**, *202*, 133–152.
- (24) Aicart, E.; Junquera, E.; Letcher, T. M. Isobaric thermal expansivity and isothermal compressibility of several nonsaturated hydrocarbons at 298.15 K. *J. Chem. Eng. Data* **1995**, *40*, 1225–1227.
- (25) Díaz-Peña, M.; Tardajos, G. Isothermal compressibilities of n-1-alcohols from methanol to 1-dodecanol at 298.15 K, 308.15 K and 331.15 K. *J. Chem. Thermodyn.* **1979**, *11*, 441–445.
- (26) Matulla, A. D.; Aicart, E.; Díaz-Peña, M.; Tardajos, G. Isobaric thermal expansion and isothermal compressibility of ethylbenzene + n-hexane, and + n-octane at 25 °C and 45 °C. *J. Solution Chem.* **1989**, *18*, 143–150.

Received for review February 21, 2007. Accepted June 6, 2007. P. García-Giménez acknowledges the financial support received by DGA, Departamento de Educación y Ciencia, and the European Social Fund (B020/2003).

JE700096M