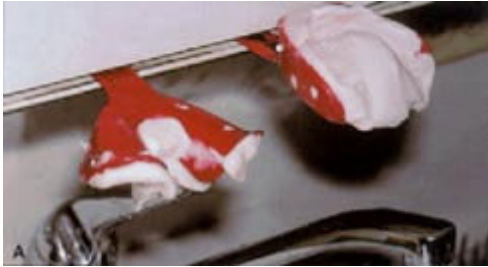


## CLINICAL AID Counter Strip for Holding Impression Trays

PETER J. PICARD, DDS

Offset strips of wood or Formica can be added under the edges of counters or shelves to hold the handles of impression trays. This will keep the impressions from distorting, whether in the operator after withdrawal from the mouth (A) or in the laboratory during pour-up (B).



If disposable impression trays are used, the slit between the wood or Formica and the counter edge must be wide enough to accommodate the tray handles. □