

Processing Multimode Binding Situations in Simulation-Based Prediction of Ligand–Macromolecule Affinities

Akash Khandelwal,[†] Viera Lukacova,[†] Daniel M. Kroll,[‡] Soumyendu Raha,[§] Dogan Comez,^{||} and Stefan Balaz^{*,†}

Departments of Pharmaceutical Sciences, Physics, Computer Science, and Mathematics, North Dakota State University, Fargo, North Dakota 58105

Received: March 3, 2005; In Final Form: June 13, 2005

The linear response (LR) approximation and similar approaches belong to practical methods for estimation of ligand–receptor binding affinities. The approaches correlate experimental binding affinities with the changes upon binding of the ligand electrostatic and van der Waals energies and of solvation characteristics. These attributes are expressed as ensemble averages that are obtained by conformational sampling of the protein–ligand complex and of the free ligand by molecular dynamics or Monte Carlo simulations. We observed that outliers in the LR correlations occasionally exhibit major conformational changes of the complex during sampling. We treated the situation as a multimode binding case, for which the observed association constant is the sum of the partial association constants of individual states/modes. The resulting nonlinear expression for the binding affinities contains all the LR variables for individual modes that are scaled by the same two to four adjustable parameters as in the one-mode LR equation. The multimode method was applied to inhibitors of a matrix metalloproteinase, where this treatment improved the explained variance in experimental activity from 75% for the unimode case to about 85%. The predictive ability scaled accordingly, as verified by extensive cross-validations.

Introduction

Estimation of binding affinities for ligand–receptor complexes is important for several research areas including structure-based drug design. The approaches range from scoring functions^{1–9} for quick ranking of large libraries of compounds docked into the binding site to more sophisticated, second-pass methods for examination of the top candidates from the fast docking. The latter category spans from methods utilizing single energy-minimized conformations^{10–15} to complex and time-consuming free energy perturbation, thermodynamic integration, and related approaches based on extensive sampling.^{16–19} Fairly accurate binding energy estimates can be obtained by methods of intermediate complexity, requiring only two molecular dynamics (MD) or Monte Carlo (MC) simulations, one with the free solvated ligand and one with the ligand bound to the solvated receptor. The binding free energy is expressed as the sum of several contributions. The methods can be classified based upon various criteria such as (1) the sampling method (MD^{20–23} or MC^{24–26}), (2) the treatment of solvent (explicit,^{20,24–26} continuum,^{15,21,27} or in vacuo^{15,22}), (3) estimation of the electrostatic component of solvation energies (linearized Poisson–Boltzmann equation,^{15,22,23,28,29} the generalized Born model,^{21,29,30}

or the pairwise Coulomb relations in the explicit solvent²⁵), and (4) the parameter optimization (used²⁷ or not used²³).

To illustrate the approaches, let us have a closer look at the linear response (LR, also known as linear interaction energy) method^{20,31–35} and its extension (ELR).^{24,36–39} The LR method correlates binding free energies ΔG_i with van der Waals and electrostatics energies between the ligand and its surroundings, to which the ELR method adds the solvent-accessible surface area (SASA) term

$$\Delta G_i = -RT \ln K_i = \alpha \Delta \langle E_{\text{vdw}} \rangle_i + \beta \Delta \langle E_{\text{el}} \rangle_i + \gamma \Delta \langle \text{SASA} \rangle_i + \kappa \quad (1)$$

Here, K_i is the association constant, R is the universal gas constant, T is temperature, the subscript i indicates the i th compound, and α , β , γ , and κ are adjustable parameters that optimize the agreement between experimental ΔG_i values and calculated energy and SASA terms according to eq 1. The angle brackets denote the ensemble averages, and Δ indicates the difference between the ensemble averages in the bound and free ligand states. The ensemble averages of the energies and SASA seem to be replaceable by the energies and SASA calculated for the time-averaged structures.^{22,39} Usually, conformational sampling leads to better correlations^{22,39} than simpler and faster minimization, although the opposite cases have been described.¹⁵

We observed that outliers in the fits of eq 1 to experimental data are occasionally associated with larger conformational changes of the bound ligands during the simulation. These changes may happen despite careful equilibration, if there are

* Stefan Balaz, Department of Pharmaceutical Sciences, College of Pharmacy, Sudro Hall 8, Fargo, ND 58105; phone 701-231-7749, fax 701-231-8333, e-mail stefan.balaz@ndsu.edu.

[†] Pharmaceutical Sciences.

[‡] Physics.

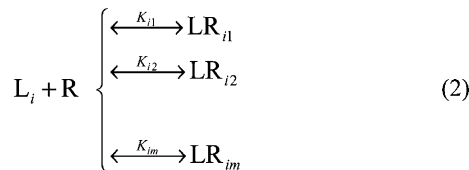
[§] Computer Science.

^{||} Mathematics.

several energetically similar conformation states available. In this communication, we propose a conceptual treatment of such a situation that is based on the multimode binding mechanism.

Methods

Reversible 1:1 binding of the *i*th ligand L_i in m mutually exclusive orientations or conformations (modes) to the receptor site R can be schematically written as



The ligand is present as a single species in the receptor surroundings. The apparent association constant K_i for this process is, on the concentration basis, defined as

$$K_i = \frac{\sum_{j=1}^m [LR_{ij}]}{[L_i][R]} = \sum_{j=1}^m K_{ij} \quad (3)$$

Each partial association constant K_{ij} can be expressed using eq 1, with the same values of the adjustable parameters α , β , γ , and κ . The apparent association constant can then be correlated with the simulation results by a combination of eqs 1 (now with the subscript ij representing the j th binding mode of the i th compound) and 3

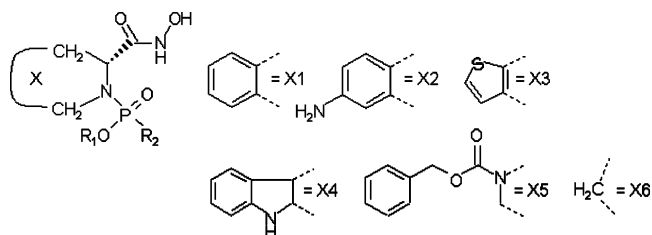
$$\Delta G_i = -RT \ln K_i = -RT \ln \sum_{j=1}^m \exp[-(\alpha \Delta \langle E_{vdw} \rangle_{ij} + \beta \Delta \langle E_{el} \rangle_{ij} + \gamma \Delta \langle SASA \rangle_{ij} + \kappa) / RT] \quad (4)$$

The simple eq 4 is in accordance with published analyses of formally analogous situations: the rigorous statistical thermodynamic⁴⁰ description and equilibrium treatment^{41,42} of the multimode interactions of ligands with proteins and kinetic analyses of reversible unimolecular reactions leading to different products⁴³ or isomers.⁴⁴ The multimode approach represented by eq 4 was also implemented in the most frequently used ligand-based method comparative molecular field analysis (CoMFA).⁴⁵

Notably, eq 4 contains the same adjustable parameters α , β , γ , and κ as eq 1. The multimode treatment uses a different correlation equation (eq 4) than the classical one-mode approach (eq 1) but relies on the same four adjustable parameters. Thus, eq 4 has $3 \times m$ variables (m is the number of binding modes considered for each ligand) that are equal to the ensemble averages of van der Waals energies, Coulombic energies, and SASA terms for individual binding modes. However, (1) all m van der Waals terms are scaled by the parameter α , (2) all m electrostatic terms are scaled by the parameter β , (3) all m SASA terms are scaled by the parameter γ , and (4) there is only one constant parameter κ . In eq 4, each mode is represented by one exponential that corresponds to eq 1 (for this reason, the separation of the parameter κ from the summation was not made in eq 4). Each exponential contains the same adjustable parameters α , β , γ , and κ , so there are four optimized parameters in total. After optimization of the parameters by nonlinear regression analysis of experimental data according to eq 4, the prevalence of the j th binding mode can be calculated as $K_{ij}/\sum K_{ij}$, where (1) the partial association constant of the j th mode K_{ij} is calculated from eq 1 with optimized values of adjustable parameters α , β , γ , and κ and the energy and SASA terms for

the j th mode, and (2) the sum runs through all m partial association constants K_{ij} that are calculated in the previous step. The prevalence of individual modes is the outcome of the parameter optimization. No assumptions about the prevalence distribution need to be made before optimization. The prevalence values calculated by this approach are in accordance with the Boltzmann distribution.

We applied the multimode method to a set of 28 diverse hydroxamate inhibitors of MMP-9,⁴⁶ encompassing the following structural types:



The complete structures of the inhibitors along with the LR terms and the experimental and predicted K_i values are listed in the Supporting Information. The ligands exhibit ~4000-fold difference in binding affinity, with the association constants K_i ranging from 2.865×10^6 to $1.25 \times 10^{10} \text{ M}^{-1}$.

The crystal structure of MMP-9 complexed with reverse hydroxamate inhibitor (file 1GKC) was downloaded from the Protein Data Bank.⁴⁷ Three-dimensional structures of ligands were constructed using the SYBYL6.91 suite of programs⁴⁸ running under Irix 6.5. The ligands were then docked into the active site of MMP-9 using FlexX.^{49,50} Conformations of the ligands in the active site were selected from the top 30 poses generated by FlexX using the distance in the interval 1.5–2.5 Å between the hydroxamate oxygens and the zinc atom of the receptor as the primary criterion and the FlexX ranking as the secondary criterion.⁵¹ Protons were added to the heavy atoms of the protein, and energy minimization was performed using constraints to relax the added protons using Tripos force field.⁵² All heavy atoms were fixed at the experimental coordinates during energy minimization. The optimized complexes were then subjected to MD simulations consisting of 15-ps heating phase, 100-ps equilibration, and 200-ps production period. The lengths of the bonds between the hydroxamate groups of inhibitors and the catalytic zinc were constrained to alleviate the deficiencies of the used force field in the description of metal coordination. MD simulations for hydrated ligands were performed under similar conditions. The protocol was described in detail elsewhere.³⁹ The generated ensemble averages are summarized in the Supporting Information.

Results and Discussion

In our previous study,³⁹ the MD-based LR correlations (eq 1) of the hydroxamate inhibitors⁴⁶ of MMP-9 behaved anomalously: The quality of correlations did not improve with increased simulation time, and some outliers adopted comparatively different conformations during MD simulations. We decided to examine whether a correlation taking into account multiple binding modes could improve the results.

The van der Waals, electrostatic, and solvent-accessible surface area terms were calculated using the corresponding time-averaged structures of the complex and the free ligand for eight 25-ps intervals of the 200-ps MD simulations. The time-averaged structure for each interval represented a binding mode (0–25 ps, mode 1; 25–50 ps, mode 2; ... 175–200 ps, mode 8). No collinearity between the calculated LR terms, used in

TABLE 1: Correlations of Inhibitory Potencies with Energy and SASA Terms

eq	sampling	$\alpha \times 10^{-2}$ [mol/kcal]	$\beta \times 10^{-2}$ [mol/kcal]	$\gamma \times 10^{-2}$ [\AA^{-2}]	k	SD	r^2	RMSE		
								LNO ^b	LOO ^c	LSO ^d
1 ^a	minimization			1.566 ± 0.350	-14.30 ± 0.98	1.128	0.435	1.646	1.785	1.750
1	MD (200 ps)			1.656 ± 0.251	-11.75 ± 1.04	1.101	0.627	1.338	1.469	1.478
4	MD (8 × 25 ps)	1.639 ± 0.421	2.231 ± 0.649	1.121 ± 0.235	-5.785 ± 1.588	0.862	0.845	0.931	1.008	1.012

^a No conformational sampling, just the minimized complex structures used. ^b No omission of compounds. ^c Leave-one-out cross-validation. ^d Leave-several-out cross-validation: random selection of a six-member test set, repeated 200 times.

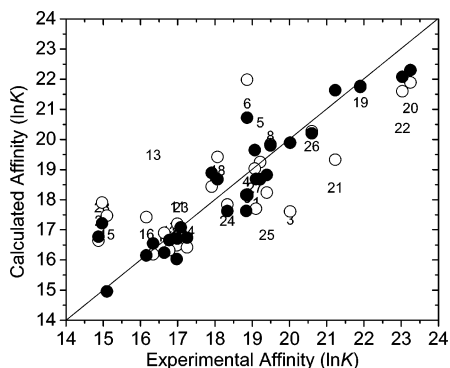


Figure 1. Comparison of the experimental vs calculated binding affinity (ln K) for the one-mode model (eq 1), with minimization (the compound number; see Supporting Information for structures) and conformational sampling (○, eq 1), and for the multi-mode conformational sampling (●, eq 4). The optimized coefficient values are given in Table 1.

eqs 1 and 4, was observed. The highest mutual correlation was seen between the electrostatic and SASA terms (eq 4), with the correlation coefficient $r = 0.218$. The results of the fit to the data for the classical and multimode LR treatment (eqs 1 and 4, respectively) are summarized in Table 1. The results for the minimization of the ligands and the binding sites are included for comparison. A plot of experimental versus calculated activities is shown in Figure 1.

For minimization and the one-mode treatment, the van der Waals and electrostatics terms were not significant. For minimization, the parameter errors for the van der Waals and electrostatic terms were higher than the optimized parameter values. Moreover, the parameter for the van der Waals term had a negative value. For the one-mode treatment, the error terms were $\sim 60\%$ of the parameter estimates. Inclusion of the statistically insignificant terms led to negligible improvements in the correlations: for minimization, to $r^2 = 0.445$, and for the one-mode treatment, to $r^2 = 0.695$ (data not shown).

The multimode model provides significantly better correlations (Table 1, Figure 1) and explains $\sim 85\%$ ($r^2 = 0.845$) of

the variation in experimental activity with the standard deviation $SD = 0.862$. All three terms included in eq 4 exhibited significant contributions to the correlation. The contributions of the energy terms imply dominant roles of the electrostatic and van der Waals interactions between the inhibitor and the protein. The SASA term indicates that the burying of the ligand, which is exposed to the solvent in the unbound state, is favorable for complex formation. Division of the SASA term into polar and nonpolar solvent-accessible surface areas did not increase the descriptive and predictive power of the model (data not shown).

The robustness of the regression equations and their predictive abilities were probed by cross-validation. For this purpose, the fits to the potency data are generated, leaving out one or more inhibitors from the calibration process. The resulting equation for each fit is used to predict the potencies of the omitted compounds. The leave-one-out (LOO) procedure and especially the leave-several-out (LSO) procedure with a random selection of a six-member test set that was repeated 200 times provided a thorough evaluation. The root mean square error (RMSE) values using LOO (1.008) and LSO (1.012) were only slightly higher than the RMSE value of the whole data set without any omission (0.931).

Equation 4 has an interesting property: it selects the binding modes that contribute most to the binding. The prevalencies $K_{ij}/\sum K_{ij}$ of individual simulation intervals representing the binding modes for the studied ligands are summarized in the Supporting Information, along with ligand structures and experimental and predicted affinities, as well as energy and SASA terms. Major outliers in the one-mode treatment (ligands 3, 15, and 21) are predicted accurately by multimode treatment (Figure 1). In the case of compound 3, the contributions are $\sim 15\%$ for all modes except modes 1 and 7 (4% and 10%, respectively). Compound 15 shows a similar pattern, but the minimal contributions are observed for modes 1, 2, and 6. Compound 21 exhibits both positive and negative deviations from the average: Mode 2 contributes 26% to overall binding, while modes 1 and 5 represent only 8% and 5%, respectively. Ligands 2, 6, 7, 8, 9, 23, and 24 also have a dominant mode (mode 7, 4, 2, 1, 1, 7, and 8, respectively) representing more

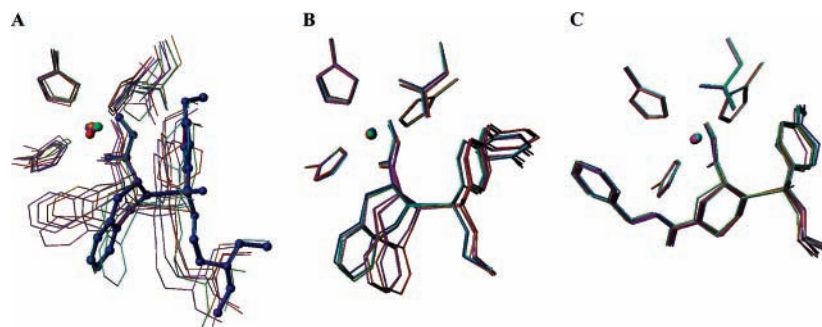


Figure 2. Binding modes of compounds 7 (A), 22 (B), and 27 (C). The mode representing 40% or more of the bound ligand is displayed in balls and sticks (A). The time-averaged structures for 25-ps simulation intervals represent individual modes and are color-coded (modes 1–8, respectively) cyan, 0–25 ps; blue, 25–50 ps; green, 50–75 ps; magenta, 75–100 ps; orange, 100–125 ps; purple, 125–150 ps; red, 150–175 ps; and violet, 175–200 ps. The structures were superimposed using the α -carbon atoms of the protein.

than 30% of the total bound ligands. A ligand oscillating around an equilibrium position should exhibit approximately equal contributions to binding for all eight binding modes, i.e., in ideal case, the average prevalence is 12.5% with the standard deviation $SD = 0$. The SD values of the mode prevalences ranged from 1–4 (compounds **1**, **3**, **14**, **15**, **22**, **27**, **28**) to 12–15 (compounds **2**, **7**, **8**). As illustrated in Figure 2, among complexes that substantially change the geometry during simulation, some have one significant binding mode (Figure 2A), while others exhibit an even distribution of binding modes (Figure 2B). As can be expected, well-behaved complexes with similar geometries in each simulation period have approximately equal prevalences of binding modes (Figure 2C).

Conclusions

The developed multimode approach to the LR approximation resulted, in the studied case of hydroxamate inhibitors of MMP-9, in correlations with significantly better descriptions and predictions as compared to classical one-mode LR equation. The entire simulation period is divided into time slots called binding modes. The time-averaged structures of bound and free ligands in the binding modes are used to calculate van der Waals, electrostatic, and desolvation contributions to binding. The weights of the contributions are determined by optimization using a multimode LR equation. The weights also determine the contributions of individual binding modes to overall binding. Steady ligands, oscillating around the equilibrium positions, exhibit an even distribution of binding modes. Mobile ligands, undergoing substantial geometry changes in the complex during MD simulations, may or may not preferentially bind in selected binding modes. If further studies confirm the findings, the multimode LR approach may become a useful tool for prediction of binding affinities.

Acknowledgment. This work was supported in part by the NIH NCRG grants 1 PP20 RR 15566 and 1 P20 RR 16471, as well as by the access to resources of the Computational Chemistry and Biology Network and the Center for High Performance Computing, both at the North Dakota State University.

Supporting Information Available: Table S1 contains ligand structures, inhibitory potencies (experimental and calculated by all three used approaches). Table S2 lists the energy and SASA terms for individual approaches. Table S3 provides prevalences of individual binding modes and their structural similarities for the multimode approach. This material is available free of charge via the Internet at <http://pubs.acs.org>.

References and Notes

- Goodford, P. J. *J. Med. Chem.* **1985**, *28*, 849–857.
- Novotny, J.; Bruccoleri, R. E.; Saul, F. A. *Biochemistry* **1989**, *28*, 4735–4749.
- Meng, E. C.; Shoichet, B. K.; Kuntz, I. D. *J. Comput. Chem.* **1992**, *13*, 505–524.
- Krystek, S.; Stouch, T.; Novotny, J. *J. Mol. Biol.* **1993**, *234*, 661–679.
- Rotstein, S. H.; Murcko, M. A. *J. Med. Chem.* **1993**, *36*, 1700–1710.
- Bohm, H. J. *J. Comput.-Aided Mol. Des.* **1994**, *8*, 243–256.
- Wallqvist, A.; Jernigan, R. L.; Covell, D. G. *Protein Sci.* **1995**, *4*, 1881–1903.
- Verkhivker, G.; Appelt, K.; Freer, S. T.; Villafranca, J. E. *Protein Eng.* **1995**, *8*, 677–691.
- Head, R. D.; Smythe, M. L.; Oprea, T. I.; Waller, C. L.; Green, S. M.; Marshall, G. R. *J. Am. Chem. Soc.* **1996**, *118*, 3959–3969.
- Vajda, S.; Wheng, Z.; Rosenfeld, R.; DeLisi, C. *Biochemistry* **1994**, *33*, 13977–13988.
- Kurinov, I. V.; Harrison, R. W. *Nat. Struct. Biol.* **1994**, *1*, 735–743.
- Holloway, M. K.; Wai, J. M.; Halgren, T. A.; Fitzgerald, P. M.; Vacca, J. P.; Dorsey, B. D.; Levin, R. B.; Thompson, W. J.; Chen, L. J.; deSolms, S. J.; Gaffin, N.; Ghosh, A. K.; Giuliani, E. A.; Graham, S. L.; Guare, J. P.; Hungate, R. W.; Lyle, T. A.; Sanders, W. M.; Tucker, T. J.; Wiggins, M.; Wiscount, C. M.; Woltersdorf, O. W.; Young, S. D.; Darke, P. L.; Zugay, J. A. *J. Med. Chem.* **1995**, *38*, 305–317.
- Ortiz, A. R.; Pisabarro, M. T.; Gago, F.; Wade, R. C. *J. Med. Chem.* **1995**, *38*, 2681–2691.
- Viswanadhan, V. N.; Reddy, M. R.; Wlodawer, A.; Varney, M. D.; Weinstein, J. N. *J. Med. Chem.* **1996**, *39*, 705–712.
- Huang, D.; Caffisch, A. *J. Med. Chem.* **2004**, *47*, 5791–5797.
- Beveridge, D. L.; DiCupua, F. M. *Annu. Rev. Biophys. Chem.* **1989**, *18*, 431–492.
- Jorgensen, W. L. *Acc. Chem. Res.* **1989**, *22*, 184–189.
- Straatsma, T. P.; McCammon, J. A. *Annu. Rev. Phys. Chem.* **1992**, *43*, 407–435.
- Kollman, P. *Chem. Rev.* **1993**, *93*, 2395–2417.
- Åqvist, J.; Medina, C.; Samuelsson, J. E. *Protein Eng.* **1994**, *7*, 385–391.
- Zhou, R.; Friesner, R. A.; Ghosh, A.; Rizzo, R. C.; Jorgensen, W. L.; Levy, R. M. *J. Phys. Chem. B* **2001**, *105*, 10388–10397.
- Zoete, V.; Michielin, O.; Karplus, M. *J. Comput.-Aided Mol. Des.* **2003**, *17*, 861–880.
- Kuhn, B.; Kollman, P. A. *J. Med. Chem.* **2000**, *43*, 3786–3791.
- Wall, I. D.; Leach, A. R.; Salt, D. W.; Ford, M. G.; Essex, J. W. *J. Med. Chem.* **1999**, *42*, 5142–5152.
- Smith, M. B. K.; Hose, B. M.; Hawkins, A.; Lipchock, J.; Farnsworth, D. W.; Rizzo, R. C.; Tirado, R. J.; Arnold, E.; Zhang, W.; Hughes, S. H.; Jorgensen, W. L.; Michejda, C. J.; Smith, R. H. *J. Med. Chem.* **2003**, *46*, 1940–1947.
- Ostrovsky, D.; Udier-Blagovic, M.; Jorgensen, W. L. *J. Med. Chem.* **2003**, *46*, 5691–5699.
- Toung, B. A.; Reynolds, C. H. *J. Med. Chem.* **2003**, *46*, 2074–2082.
- Kollman, P. A.; Massova, I.; Reyes, C.; Kuhn, B.; Huo, S.; Chong, L.; Lee, M.; Lee, T.; Duan, Y.; Wang, W.; Donini, O.; Cieplak, P.; Srinivasan, J.; Case, D. A.; Cheatham, T. E. *Acc. Chem. Res.* **2000**, *33*, 889–897.
- Srinivasan, J.; Cheatham, T. E., III; Cieplak, P.; Kollman, P. A.; Case, D. A. *J. Am. Chem. Soc.* **1998**, *120*, 9401–9409.
- Rizzo, R. C.; Toba, S.; Kuntz, I. D. *J. Med. Chem.* **2004**, *47*, 3065–3074.
- Hansson, T.; Åqvist, J. *Protein Eng.* **1995**, *8*, 1137–1144.
- Hulten, J.; Bonham, N. M.; Nillroth, U.; Hansson, T.; Zuccarello, G.; Bouzide, A.; Åqvist, J.; Classon, B.; Danielson, U. H.; Karlen, A.; Kvarnstrom, I.; Samuelsson, B.; Hallberg, A. *J. Med. Chem.* **1997**, *40*, 885–897.
- Åqvist, J.; Mowbray, S. L. *J. Biol. Chem.* **1995**, *270*, 9978–9981.
- Åqvist, J. *J. Comput. Chem.* **1996**, *17*, 1587–1597.
- Paulsen, M. D.; Ornstein, R. L. *Protein Eng.* **1996**, *9*, 567–577.
- Carlson, H. A.; Jorgensen, W. L. *J. Phys. Chem.* **1995**, *99*, 10667–10673.
- Jones-Hertzog, D. K.; Jorgensen, W. L. *J. Med. Chem.* **1997**, *40*, 1539–1549.
- Lamb, M. L.; Tirado-Rives, J.; Jorgensen, W. L. *Bioorg. Med. Chem.* **1999**, *7*, 851–860.
- Khandelwal, A.; Lukacova, V.; Kroll, D. M.; Comez, D.; Raha, S.; Balaz, S. *QSAR Comb. Sci.* **2004**, *23*, 754–756.
- Wang, J.; Szewczuk, Z.; Yue, S. Y.; Tsuda, Y.; Konishi, Y.; Purisima, E. O. *J. Mol. Biol.* **1995**, *253*, 473–492.
- Balaz, S.; Hornak, V.; Haluska, L. *Chemom. Intell. Lab. Syst.* **1994**, *24*, 185–191.
- Hornak, V.; Balaz, S.; Schaper, K. J.; Seydel, J. K. *Quant. Struct.-Act. Relat.* **1998**, *17*, 427–436.
- Jullien, L.; Proust, A.; LeMenn, J. C. *J. Chem. Educ.* **1998**, *75*, 194–199.
- Smith, W. R.; Missen, R. W. *Chemical Reaction Equilibrium Analysis: Theory and Algorithms*; John Wiley and Sons: New York, 1982.
- Lukacova, V.; Balaz, S. *J. Chem. Inf. Comput. Sci.* **2003**, *43*, 2093–2105.
- Sawa, M.; Kiyoi, T.; Kurokawa, K.; Kumihara, H.; Yamamoto, M.; Miyasaka, T.; Ito, Y.; Hirayama, R.; Inoue, T.; Kirii, Y.; Nishiwaki, E.; Ohmoto, H.; Maeda, Y.; Ishibushi, E.; Inoue, Y.; Yoshino, K.; Kondo, H. *J. Med. Chem.* **2002**, *45*, 919–929.
- Berman, H. M.; Westbrook, J.; Feng, Z.; Gilliland, G.; Bhat, T. N.; Weissig, H.; Shindyalov, I. N.; Bourne, P. E. *Nucleic Acids Res.* **2000**, *28*, 235–242.

- (48) SYBYL6.91; Tripos Inc., St. Louis, Missouri.
- (49) Rarey, M.; Kramer, B.; Lengauer, T.; Klebe, G. *J. Mol. Biol.* **1996**, *261*, 470–489.
- (50) Kramer, B.; Rarey, M.; Lengauer, T. *Proteins* **1999**, *37*, 228–241.
- (51) Hu, X.; Balaz, S.; Shelver, W. H. *J. Mol. Graphics Model.* **2004**, *22*, 293–397.
- (52) Clark, M.; Cramer, R. D. I.; van Op den Bosch, N. *J. Comput. Chem.* **1989**, *10*, 982–1012.