

Cross-interaction Constants as a Measure of the Transition State Structure. Part 11.† Solvolyses of 1-Phenyl-2-propyl Benzenesulphonates

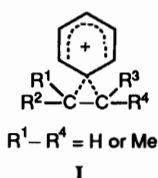
Ikchoon Lee,^{*a} Won Heui Lee,^a Hai Whang Lee^a and Byung Choon Lee^b

^a Department of Chemistry, Inha University, Incheon 402-751, South Korea

^b Department of Chemistry, Choongbuk National University, Chongju 360-763, South Korea

The solvolyses of 1-phenyl-2-propyl benzenesulphonates (PPBs) have been investigated in methanol-acetonitrile mixtures and in hexafluoropropan-2-ol (HFIP). The transition state structure has been discussed using various selectivity parameters, especially with the cross-interaction constants, ρ_{YZ} and λ_{YZ} , between substituents in the substrate (Y) and in the leaving group (Z). It has been found that the solvolysis proceeds by the solvent-assisted pathway, k_S , in methanol, whereas in HFIP PPBs solvolyse *via* the aryl-assisted pathway, k_A . The only exception was the *p*-MeO substituent, which deviates positively in methanol from the $\log k_S$ vs. σ plot due to participation of the aryl-assisted path and negatively in HFIP from the $\log k_A$ vs. $\sigma_{(\text{neophyl})}$ plot due to deactivation by hydrogen bonding of the methoxy oxygen in the acidic solvent. The two distinctive high values of ρ_{YZ} provided evidence for the strongly bound transition states in the two processes, k_S and k_A , with a relatively low degree of bond breaking.

Participation of an aromatic ring in the solvolysis of β -arylalkyl systems through the intermediacy of a bridged benzenium ion, I, has been well established both experimentally¹ and theoretically.² In recent gas-phase studies of



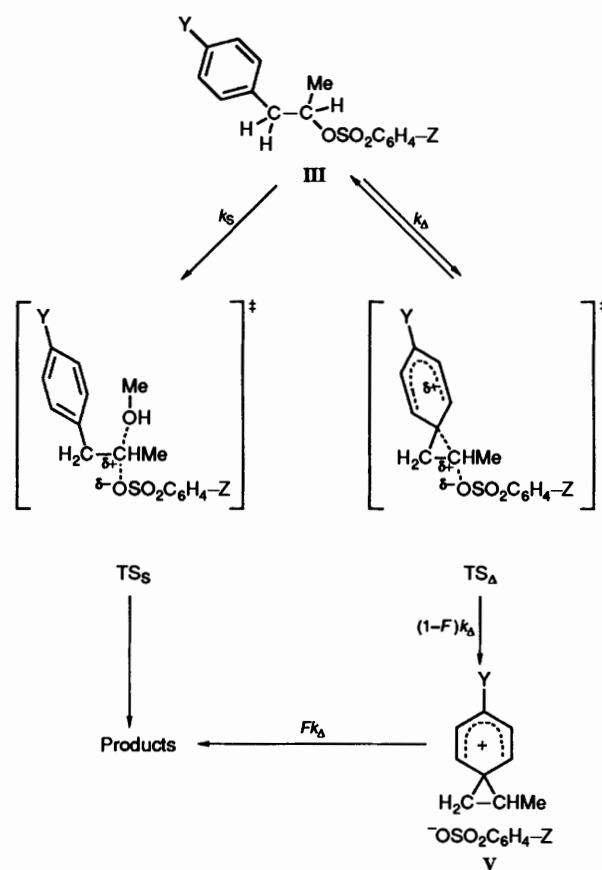
acid-induced nucleophilic displacement reactions, Fornarini *et al.*³ have shown the occurrence of relatively stable cyclic alkylenebenzenium ions, I, as static intermediates. They concluded that the gas-phase phenyl-group assistance to nucleophilic substitution is quite analogous to the related processes occurring under solvolytic conditions and in non-nucleophilic solvent media. However, in the solvolyses of β -arylalkyl compounds, the two possible reaction pathways, k_S and k_A in Scheme 1, are known to be competitive,¹⁻³ but the transition state (TS) structures involved are not well understood.‡

The size of the Hammett or the Brønsted coefficient, ρ_i or β_i , is commonly believed to represent the extent of charge development at the reaction site in the TS. However, the simple, first derivative coefficients, ρ_i and β_i , are often not a satisfactory measure of the TS structure, since the efficiency of charge transmission may differ between reaction series. In order to overcome this difficulty, we have recently introduced mechanistic criteria for reactions in solution based on cross-interaction constants, ρ_{ij} and λ_{ij} , eqns. (1a, b),⁴ where k_{ij} is

$$\log(k_{ij}/k_{HH}) = \rho_i\sigma_i + \rho_j\sigma_j + \rho_{ij}\sigma_i\sigma_j \quad (1a)$$

$$= \rho_i\sigma_i + \beta_j\Delta pK_j + \lambda_{ij}\sigma_i\Delta pK_j \quad (1b)$$

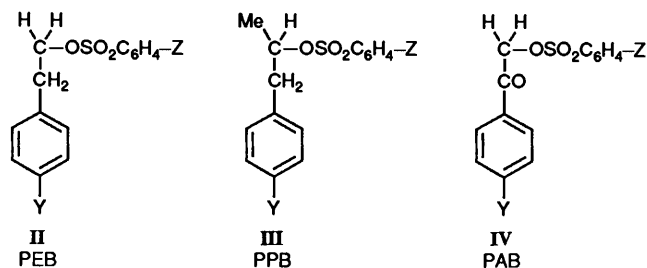
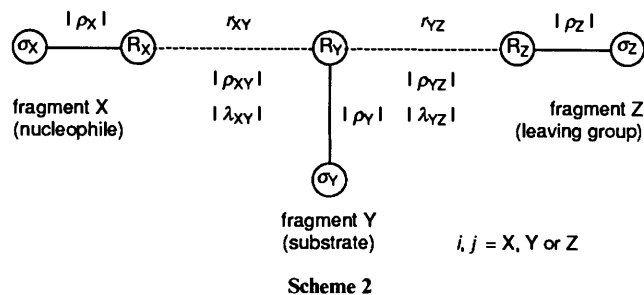
the rate constant for disubstituted (with σ_i and σ_j) reactants



and $\Delta pK_j = pK_j - pK_{j=H}$. It has been shown that the distance r_{ij} between two reaction centres R_i and R_j (Scheme 2), *i.e.*, the degree of bond-making or -breaking in the transition state, is a logarithmic inverse function of the magnitude of the cross-interaction constants;⁵ therefore r_{ij} is inversely related to $|\rho_{ij}|$ or $|\lambda_{ij}|$, *i.e.*, the larger cross-interaction constants indicate a tighter TS. Using the cross-interaction constant, ρ_{YZ} , between substituents in the substrate (σ_Y) and in the leaving group (σ_Z), we have shown previously that the solvolysis^{6a} and the nucleophilic substitution reactions^{6b} of 2-phenylethyl benzenesulphonates (PEBs), II, proceed by competition between

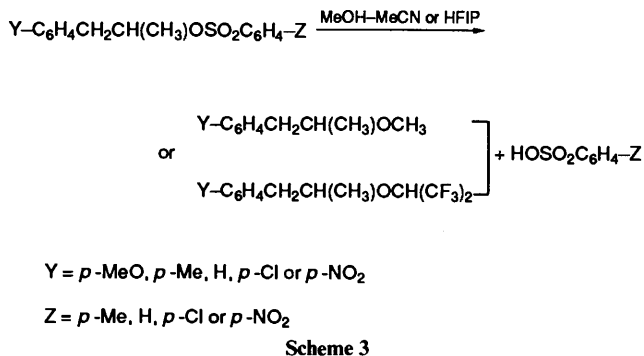
† Part 10, I. Lee, S. W. Hong and J. H. Park, *Bull. Korean Chem. Soc.*, 1989, **10**, 459.

‡ Schadt *et al.*,^{1a} stated in their work that 'It is difficult to make detailed comments concerning the geometry of the k_A TS complex from this $\rho_{(\text{neophyl})}$ treatment.'



discrete aryl-assisted and aryl-unassisted pathways, but the aryl participation in the TS is relatively small.

In this work we have carried out kinetic studies of the solvolysis of 1-phenyl-2-propyl benzenesulphonates (PPBs), **III**, in methanol-acetonitrile mixtures and in 1,1,1,3,3,3-hexafluoroisopropanol-2-ol (HFIP), Scheme 3, in order to elucidate the



TS structures involved in the two possible pathways, *i.e.*, aryl-assisted, k_{Δ} , and solvent-assisted, k_s , Scheme 1.

Results and Discussion

The PPB system is known to solvolyse *via* the k_s and/or k_{Δ} pathways without elimination, or other side reactions.^{1a} Our product analysis has shown that in both solvent systems studied no such complications are detectable.

Solvolysis in MeOH-MeCN Mixtures.—The pseudo-first-order rate constants k_1 for the solvolysis of PPBs in methanol-acetonitrile mixtures are summarized in Table 1. The rate increases with a more electron withdrawing substituent ($Z = p\text{-NO}_2$) in the leaving group, *i.e.*, a better leaving group, and with a more electron donating substituent ($Y = p\text{-MeO}$) in the substrate. The rate also increases with an increase in the MeOH content of the medium. The k_1 values are by 5–13.5 times the corresponding values for PEB, **II**,^{6a} in pure methanol; α -methyl substitution in PEB to give PPB leads to a *ca.* five-fold rate increase for $Y = \text{H}$ and $p\text{-NO}_2$ but the rate enhancement rises to 13.5 times for $Y = p\text{-MeO}$. This can be attributed to the stabilisation of the TS structure by dispersion of the incipient positive charge at the α -carbon with the α -methyl

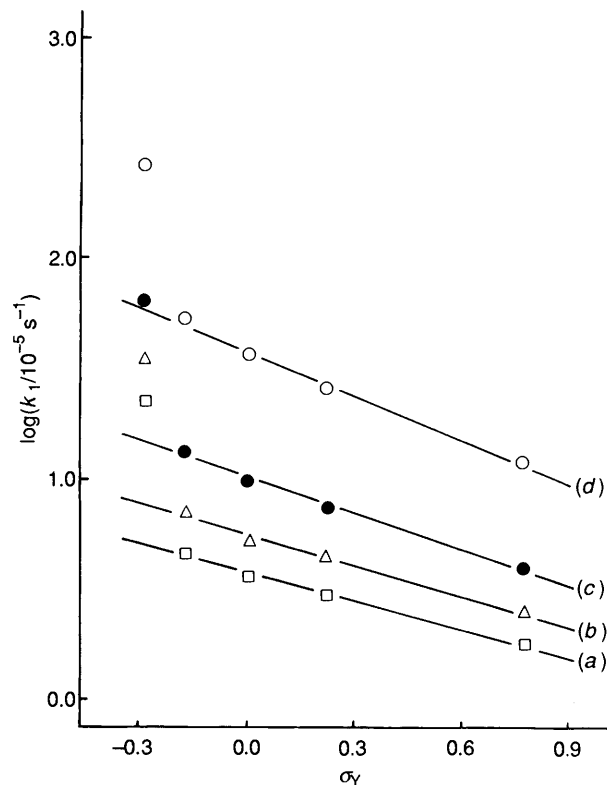


Fig. 1 Hammett ρ_Y plots for the solvolysis of PPB in MeOH at 65.0 °C. (a) $Z = p\text{-Me}$; (b) $Z = \text{H}$; (c) $Z = p\text{-Cl}$; (d) $Z = p\text{-NO}_2$

group and, more efficiently, with the electron donating ring substituent (Y). These effects can be expected in both possible reaction pathways, *i.e.*, attack on the reaction centre (α -carbon) by a solvent molecule (k_s) and by the *ipso* carbon of the ring (k_{Δ}),¹ but the striking rate enhancement by $Y = p\text{-MeO}$ should only be possible in the latter pathway (Scheme 1), since in the transition states the ring with substituent Y is separated from the reaction centre by an intervening CH_2 group.⁷

Very small rate maxima are observed for $Y = p\text{-MeO}$ with electron-withdrawing substituents in the leaving group at 90% MeOH. This type of behaviour has been shown to represent a breakdown of the polymeric MeOH structure giving a maximum free MeOH concentration at *ca.* 90% MeOH,⁸ where the solvent ionizing power becomes a maximum.⁹ The Hammett plots for the methanolysis with σ_Y are shown in Fig. 1.

Linearities were good in general with the exception of $Y = p\text{-MeO}$, for which the rates exhibit strong positive deviations from the $\rho\sigma$ plots due to aryl participation. The slopes, ρ_Y in Table 2, are negative as expected from positive charge development at the reaction centre in the TS.

The magnitude of ρ_Y increases with a more electron withdrawing substituent in the leaving group ($Z = p\text{-NO}_2$), demonstrating a greater degree of bond-breaking by a better leaving group. There is also an increase in the size of ρ_Y with a decrease in the solvent nucleophilicity, which is accompanied by an increase in the polarity (π^*) of the solvent mixture, as the MeOH content decreases.¹⁰ The size of ρ_Y is relatively large in the 50% MeOH mixture, indicating substantial positive charge development, probably due to an increase in bond-breaking.

There is a large rate enhancement induced by $Y = p\text{-MeO}$ ($k_{p\text{-MeO}}/k_{\text{H}} \approx 5.7$ for $Z = \text{H}$ at 55.0 °C) in contrast to the behaviour found for the methanolysis^{6a} of PEB ($k_{p\text{-MeO}}/k_{\text{H}} \approx 2.0$ for $Z = \text{H}$ at 55.0 °C) and for the reactions of PEB with anilines^{6b} ($k_{p\text{-MeO}}/k_{\text{H}} \approx 1.4$ for $Z = \text{H}$ at 65.0 °C).

Table 1 Pseudo-first-order rate constants ($k_1 \times 10^5 \text{ s}^{-1}$) for the solvolysis of $\text{Y-C}_6\text{H}_4\text{CH}_2\text{CH}(\text{CH}_3)\text{OSO}_2\text{C}_6\text{H}_4\text{-Z}$ (PPB) in MeOH–MeCN solvent mixtures at 65.0, 55.0 and 45.0 °C

T/°C	MeOH (v/v)%	Y	Z			
			<i>p</i> -Me	H	<i>p</i> -Cl	<i>p</i> -NO ₂
65.0	100	<i>p</i> -MeO	22.4 ± 0.4 ^a	34.7 ± 0.4	65.6 ± 0.6	288 ± 4
		<i>p</i> -Me	4.58 ± 0.07	7.27 ± 0.07	13.2 ± 0.3	56.6 ± 0.1
		H	3.56 ± 0.09	5.25 ± 0.12	9.77 ± 0.04	39.5 ± 0.7
		<i>p</i> -Cl	2.88 ± 0.07	4.37 ± 0.08	7.41 ± 0.06	26.9 ± 0.5
		<i>p</i> -NO ₂	1.68 ± 0.03	2.43 ± 0.03	3.91 ± 0.02	12.5 ± 0.1
	90	<i>p</i> -MeO	22.9 ± 0.1	31.6 ± 0.9	66.6 ± 0.07	292 ± 5
		<i>p</i> -Me	4.24 ± 0.11	6.70 ± 0.01	13.1 ± 0.06	53.3 ± 0.9
		H	2.95 ± 0.07	4.57 ± 0.03	9.04 ± 0.04	33.6 ± 0.8
		<i>p</i> -Cl	2.40 ± 0.05	3.47 ± 0.08	6.61 ± 0.09	22.9 ± 0.5
		<i>p</i> -NO ₂	1.41 ± 0.01	2.00 ± 0.04	3.55 ± 0.06	10.7 ± 0.1
	80	<i>p</i> -MeO	20.3 ± 0.4	28.7 ± 0.3	60.8 ± 0.4	281 ± 2
		<i>p</i> -Me	3.72 ± 0.09	6.60 ± 0.11	12.0 ± 0.3	52.5 ± 0.7
		H	2.82 ± 0.06	4.42 ± 0.06	7.59 ± 0.12	35.5 ± 1.0
		<i>p</i> -Cl	2.14 ± 0.05	3.16 ± 0.03	5.75 ± 0.11	22.4 ± 0.28
		<i>p</i> -NO ₂	1.20 ± 0.03	1.82 ± 0.01	2.99 ± 0.06	9.83 ± 0.05
50	<i>p</i> -MeO	8.71 ± 0.01	14.7 ± 0.4	30.0 ± 0.4	155 ± 4	
	<i>p</i> -Me	1.28 ± 0.02	2.17 ± 0.01	4.47 ± 0.05	21.4 ± 0.6	
	H	0.749 ± 0.01	1.23 ± 0.04	2.29 ± 0.03	11.2 ± 0.3	
	<i>p</i> -Cl	0.580 ± 0.01	0.832 ± 0.02	1.66 ± 0.03	7.94 ± 0.17	
	<i>p</i> -NO ₂	0.200 ± 0.004	0.309 ± 0.004	0.537 ± 0.003	2.24 ± 0.03	
55.0	100	<i>p</i> -MeO	6.94 ± 0.11	11.0 ± 0.2	21.4 ± 0.6	100 ± 3
		<i>p</i> -Me	1.51 ± 0.04	2.48 ± 0.01	4.65 ± 0.04	21.4 ± 0.6
		H	1.25 ± 0.02	1.91 ± 0.02	3.73 ± 0.04	16.1 ± 0.3
		<i>p</i> -Cl	1.00 ± 0.02	1.51 ± 0.02	2.75 ± 0.03	11.2 ± 0.2
		<i>p</i> -NO ₂	0.601 ± 0.006	0.891 ± 0.004	1.51 ± 0.05	5.40 ± 0.09
45.0	100	<i>p</i> -MeO	1.98 ± 0.03	3.15 ± 0.04	6.80 ± 0.09	36.5 ± 0.09
		<i>p</i> -Me	0.480 ± 0.01	0.801 ± 0.01	1.52 ± 0.03	7.80 ± 0.14
		H	0.401 ± 0.007	0.652 ± 0.009	1.31 ± 0.02	6.19 ± 0.08
		<i>p</i> -Cl	0.331 ± 0.007	0.551 ± 0.011	1.02 ± 0.02	4.37 ± 0.05
		<i>p</i> -NO ₂	0.202 ± 0.003	0.311 ± 0.003	0.549 ± 0.012	2.20 ± 0.02

^a The error limits shown are average deviations based on triplicate runs.

Table 2 Hammett ρ_Y values^{a,b} for the solvolysis of PPB in MeOH–MeCN mixtures at 65.0, 55.0 and 45.0 °C

T/°C	MeOH (v/v)%	Z			
		<i>p</i> -Me	H	<i>p</i> -Cl	<i>p</i> -NO ₂
65.0	100	-0.45	-0.48	-0.54	-0.68
	90	-0.48	-0.53	-0.58	-0.71
	80	-0.51	-0.56	-0.60	-0.75
	50	-0.81	-0.86	-0.92	-0.99
	55.0	100	-0.42	-0.46	-0.51
45.0	100	-0.39	-0.43	-0.47	-0.58

^a Correlation coefficients; $r > 0.990$. ^b Except Y = *p*-MeO.

The Hammett coefficients ρ_Y in Table 2 are for direct displacement, k_S , by the solvent, MeOH; the linearity extends up to Y = *p*-Me, indicating that the onset of neighbouring group assistance, k_A , is in this case at a Y substituent which has a greater electron-donating power than Y = *p*-Me. This is in contrast to the k_S path (and the onset of k_A) in other more ionizing solvents summarized in Table 3. Table 3 reveals that an increase in the solvent nucleophilicity, N_{OTs} and a decrease in the solvent ionizing power, Y_{OTs} , causes the k_S pathway to compete more favourably, pushing the onset of the aryl-assisted path, k_A , toward a Y-substituent with more electron-donating power, and reduces the size of ρ_Y . Hence there is more bond

Table 3 Solvent effects on the solvent-assisted path^a

Solvent	ρ_Y	Onset of aryl-assisted path	N_{OTs} ^e	Y_{OTs}^e
MeOH ^b	-0.40	<i>p</i> -Me	-0.04	-0.92
80% EtOH–H ₂ O ^c	-0.39	H	0.0	0.0
MeCO ₂ H ^c	-0.62	<i>p</i> -Cl	-2.28	-0.9
HCO ₂ H ^c	-1.24	<i>p</i> -Cl	-2.35	3.04
(CF ₃) ₂ CHOH ^d	-3.26 ^d	(<i>p</i> -NO ₂)	-4.27 ^f	3.82

^a For *p*-toluenesulphonates (Z = *p*-Me). ^b This work. Interpolated ρ_Y at 50.0 °C. ^c Taken from ref. 1(a). ^d For this solvent, the ρ_Y value is for the k_A path plotted against $\sigma_{(\text{neophyl})}$ using Y = H, *p*-Me and *p*-Cl. ^e Taken from ref. 11. ^f For 97% HFIP from the same source as for e.

formation and less bond cleavage in a solvent with a higher N_{OTs} and lower Y_{OTs} , since a smaller negative ρ_Y should reflect less positive charge development at the reaction centre in the TS. Thus the TS in the k_S path for the methanolysis of PPB appears to be relatively tight compared with that in other solvents.

In order to assess variations in the extent of aryl participation we have determined $100Fk_A/(k_S + k_A)$, where k_A represents the difference between the observed k_1 and the extrapolated k_1^{ext} (from the $\rho\sigma$ plots), for Y = *p*-MeO as shown in Table 4.

Table 4 shows that aryl participation accounts for ~70–80% of the total reaction for Y = *p*-MeO and is remarkably independent of the leaving group.¹ This is similar to the result for 80% EtOH(aq) at 50.0 °C,^{1b} but is low compared with other

Table 4 Percent aryl-assisted reaction [$Fk_{\Delta}/(k_S + k_{\Delta}) \times 100$] as determined by Hammett plot method for PPB

$T/^\circ\text{C}$	MeOH (v/v)%	Z			
		<i>p</i> -Me	H	<i>p</i> -Cl	<i>p</i> -NO ₂
65.0	100	78	78	78	78
	50	84	84	84	84
55.0	100	76	76	76	76
45.0	100	74	73	75	76

Table 5 Kinetic isotope effects for the solvolysis of PPB with deuterated methanol at 50.0 °C

Y	Z	k_{H}	k_{D}	$k_{\text{H}}/k_{\text{D}}$
<i>p</i> -MeO	<i>p</i> -Me	36.98×10^{-6}	37.50×10^{-6}	
		37.23	37.80	
		37.72	38.18	
		$37.31 \pm 0.37(6)^a$	$37.83 \pm 0.34(1)$	$0.98(6) \pm 0.013^b$
H	<i>p</i> -Me	6.955×10^{-6}	5.393×10^{-6}	
		7.062	5.402	
		7.151	5.510	
		$7.056 \pm 0.09(8)$	$5.435 \pm 0.06(5)$	$1.29(8) \pm 0.024$
<i>p</i> -NO ₂	<i>p</i> -Me	3.286×10^{-6}	2.117×10^{-6}	
		3.329	2.172	
		3.387	2.225	
		$3.334 \pm 0.05(1)$	$2.171 \pm 0.05(4)$	$1.53(6) \pm 0.038$

^a Standard deviation. ^b Standard error $^{14} = 1/k_{\text{D}}[(\Delta k_{\text{H}})^2 + (k_{\text{H}}/k_{\text{D}})^2 \times (\Delta k_{\text{D}})^2]^{1/2}$.

Table 6 Hammett ρ_Z ^a (and Brønsted β_Z ^a) values for the solvolysis of PPB in MeOH–MeCN mixtures at 65.0, 55.0 and 45.0 °C

$T/^\circ\text{C}$	MeOH (v/v)%	Y				
		<i>p</i> -MeO	<i>p</i> -Me	H	<i>p</i> -Cl	<i>p</i> -NO ₂
65.0	100	1.17	1.15	1.11	1.02	0.92
		(-0.39)	(-0.38)	(-0.37)	(-0.34)	(-0.31)
	90	1.19	1.16	1.12	1.04	0.93
		(-0.40)	(-0.39)	(-0.37)	(-0.35)	(-0.31)
	80	1.23	1.20	1.16	1.08	0.96
(-0.41)		(-0.40)	(-0.39)	(-0.36)	(-0.32)	
50	1.32	1.29	1.24	1.22	1.11	
	(-0.44)	(-0.43)	(-0.41)	(-0.41)	(-0.37)	
55.0	100	1.23	1.21	1.18	1.11	1.01
		(-0.41)	(-0.40)	(-0.39)	(-0.37)	(-0.34)
45.0	100	1.35	1.28	1.26	1.17	1.09
		(-0.45)	(-0.43)	(-0.42)	(-0.39)	(-0.36)

^a Correlation coefficients; $r > 0.998$.

solvents with a lower nucleophilicity and a higher ionizing power.^{1a}

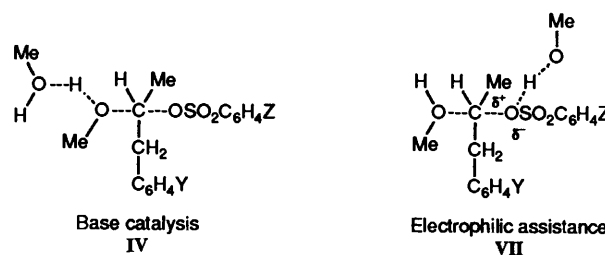
The simple¹² or general Winstein–Grunwald plots¹² gave unreasonably high m values, presumably due to the poor quality of the N and Y values used for only four MeOH–MeCN mixtures.

Kinetic isotope effect (KIE) studies involving CH₃OD (Table 5) show that for the k_S path (Y = H and *p*-NO₂) there is a bond stretching effect involving O...H and O...D due to hydrogen bonding in the base catalysis,¹³ VI, or electrophilic assistance, VII, for bond-breaking in the TS. The size of $k_{\text{H}}/k_{\text{D}}$

Table 7 Cross-interaction constants ρ_{YZ} (λ_{YZ}) for the solvolysis of PPB in MeOH–MeCN mixtures at 65.0, 55.0 and 45.0 °C^a

$T/^\circ\text{C}$	MeOH (v/v)%	ρ_Y	ρ_Z (β_Z)	ρ_{YZ} (λ_{YZ})	Correlation coefficient
65.0	100	-0.49	1.10	-0.25	0.999
			(-1.86)	(0.42)	(0.993)
	90	-0.52	1.11	-0.25	0.997
			(-1.87)	(0.40)	(0.990)
	80	-0.55	1.15	-0.26	0.998
(-1.94)			(0.43)	(0.990)	
50	-0.86	1.25	-0.18	0.997	
		(-2.11)	(0.31)	(0.992)	
55.0	100	-0.46	1.17	-0.22	0.999
			(-1.97)	(0.37)	(0.993)
45.0	100	-0.43	1.24	-0.20	0.999
			(-2.09)	(0.33)	(0.992)

^a The k_1 values for Y = *p*-MeO are excluded from the analysis.



increases as bond formation increases from Y = H to Y = *p*-NO₂, but $k_{\text{H}}/k_{\text{D}}$ is small, so the involvement of a second methanol molecule in the TS is doubtful. The value of $k_{\text{H}}/k_{\text{D}}$ is near unity (<1.0) for the substrate prone to the more aryl-assisted pathway (Y = *p*-MeO), *i.e.* there is no primary KIE. This suggests that involvement of hydrogen bonding of the type VI (especially for Y = *p*-NO₂) is more likely, since for the k_{Δ} path, only hydrogen bonding of the type VII is possible.

The Hammett plots for substituent variations in the leaving group (σ_Z) gave good linearities ($r > 0.998$) with relatively large positive ρ_Z values, as shown in Table 6 together with the Brønsted $\beta_Z(\beta_{\text{LG}})$ values (ref. 15). The magnitudes of these two parameters indicate increasing bond cleavage in the TS with a more electron donating substituent (Y) in the substrate and with a decreasing MeOH content in the solvent mixtures.

The k_1 values in Table 1 were subjected to a multiple linear regression¹⁶ analysis using eqns. (1a, b) and the cross-interaction constants ρ_{YZ} and λ_{YZ} determined are given in Table 7. The ρ_Y , ρ_Z and β_Z values in Table 7 are in good agreement with those determined independently in Tables 2 and 6. The magnitudes of ρ_{YZ} and λ_{YZ} are strikingly large; $|\rho_{\text{YZ}}|$ of 0.25 and $|\lambda_{\text{YZ}}|$ of 0.42 in pure MeOH are greater than, by more than three times, the corresponding values for the solvolysis^{7a} of PEB (II) ($|\rho_{\text{YZ}}| = 0.07$ and $|\lambda_{\text{YZ}}| = 0.12$ at 55.0 °C) and for the reactions of PEB with anilines^{7b} ($|\rho_{\text{YZ}}| = 0.07$ and $|\lambda_{\text{YZ}}| = 0.11$ for X = H at 65.0 °C). These reactions of PEB are known to proceed by a dissociative S_N2 mechanism,⁶ in this respect the solvolysis of PPB (III) would have been expected to proceed with a looser TS than that in the reactions of PEB since the α' -methyl group stabilizes the loose ion-pair-like structure.¹⁷ However, the reactions of phenacyl benzenesulphonates (PAB) (IV) with anilines are reported to proceed by an associative S_N2 mechanism with a much tighter TS; for this reaction the $|\rho_{\text{YZ}}|$ and $\lambda_{\text{YZ}}|$ values were 0.66 and 1.04, respectively,^{4g} *ca.* three times the corresponding values for the solvolysis of PPB, reflecting a tight TS with a very low

Table 8 The pseudo-first-order rate constants ($k_1 \times 10^4 \text{ s}^{-1}$)^a for the solvolysis of PPB in hexafluoropropan-2-ol (HFIP) at 50.0 °C

Y	Z			
	<i>p</i> -Me	H	<i>p</i> -Cl	<i>p</i> -NO ₂
<i>p</i> -MeO	245	—	—	2570
<i>p</i> -Me	63.3	91.3	148	556
H	14.7	—	—	100
<i>p</i> -Cl	3.09	4.07	5.62	13.9
<i>p</i> -NO ₂ ^b	0.0688	—	—	0.231

^a Based on averages of more than duplicate runs. Errors are typically $< \pm 4\%$. ^b Based on a single run. Accurate to $\pm 10\%$.

degree of bond-breaking. These comparisons show clearly that the degree of bond-breaking in the TS for the methanolysis of PPB in MeOH–MeCN is relatively low, in agreement with the low ρ_Y value discussed above. Thus the TS in the k_S path is relatively tight; it is tighter than that for PEB, II, but looser than that for PAB, IV.

The magnitudes of ρ_{YZ} and λ_{YZ} are similar in up to 80% MeOH but they fall off as the MeOH content of the solvent mixture decreases to 50% MeOH. This is in line with a higher degree of bond-breaking as indicated by the increased magnitudes of $\rho_Y(k_S)$, ρ_Z and β_Z in this solvent mixture.

Solvolysis in HFIP.—The solvolysis rate constants, k_1 , in HFIP are shown in Table 8. Trends in rate variations with substituents Y and Z are similar to those found for the methanolysis, Table 1. However, in Table 8 the rate is shown to increase dramatically ($k_{Y=p\text{-MeO}}/k_{Y=p\text{-NO}_2} \approx 3500$ for $Z = p\text{-Me}$ and 11 100 for $Z = p\text{-NO}_2$) as the substituent Y is changed from $p\text{-NO}_2$ to $p\text{-MeO}$. This suggests that in HFIP, which has extremely large ionizing power (Y) and very low nucleophilicity (N) (see Table 3), the reaction proceeds almost completely via the aryl-assisted path, k_Δ , since k_Δ will be much enhanced by $Y = p\text{-MeO}$ whereas it will be depressed by $Y = p\text{-NO}_2$.

The Hammett plots using substituent constants $\sigma_{(\text{neophyl})}^*$ are shown in Fig. 2. Strikingly, the only substituent which behaves abnormally is again $Y = p\text{-MeO}$, which is the most k_Δ prone aryl group; this time it deviates negatively, in contrast to a positive deviation in the $\rho\sigma$ plots for the k_S pathway of methanolysis in Fig. 1. The slopes, ρ , of -3.26 ($Z = p\text{-Me}$) and -3.98 ($Z = p\text{-NO}_2$)[†] are well within the range of ρ values obtained in the plots of $\log(FK_\Delta)$ vs. $\sigma_{(\text{neophyl})}$ for PPB at 50 °C in various solvents.^{1a} This shows that the solvolyses of PPBs in HFIP proceed via the k_Δ pathway; the cause of the negative deviation by $Y = p\text{-MeO}$ is known to be due to deactivation by hydrogen bonding of the methoxy oxygen in strongly acidic solvents,^{1a} HFIP.

The cross-interaction constants obtained from a multiple linear regression analysis of k_1 in HFIP (excepting $Y = p\text{-MeO}$) using eqns. (1a, b) gave $\rho_{YZ} = -0.41$ (correlation coefficient 0.997)[‡] with $\rho_Y = -3.07$ and $\rho_Z = 0.87$. The size

* Schadt *et al.*^{1a} have devised a scale of substituent constants more appropriate for β -aryl participation with neophyl as standard.

† As the rate constants in Table 8 show, the substituent $Y = \text{NO}_2$ was very deactivating and the reaction rate was very slow. Although special care was taken to prevent exposure of the reaction mixture to the atmosphere, the slow rate of reaction (usually > 1 month for a run) made the determination of the rate constant inaccurate. We estimated the error in k_1 for $Y = p\text{-NO}_2$ to be *ca.* $\pm 10\%$. If we exclude this substituent and include three substituents (*p*-Me, H and *p*-Cl; as Schadt *et al.*^{1a} in their estimates of ρ values for solvolyses of 1-aryl-2-propyl *p*-toluenesulphonates using $\sigma_{(\text{neophyl})}$), the magnitudes of ρ values for $Z = p\text{-Me}$ and $p\text{-NO}_2$ increase to -3.26 and -3.98 , respectively.

‡ For the three substituents $Y = p\text{-Me}$, H and *p*-Cl, the ρ_{YZ} value of the k_Δ pathway increases to -0.76 .

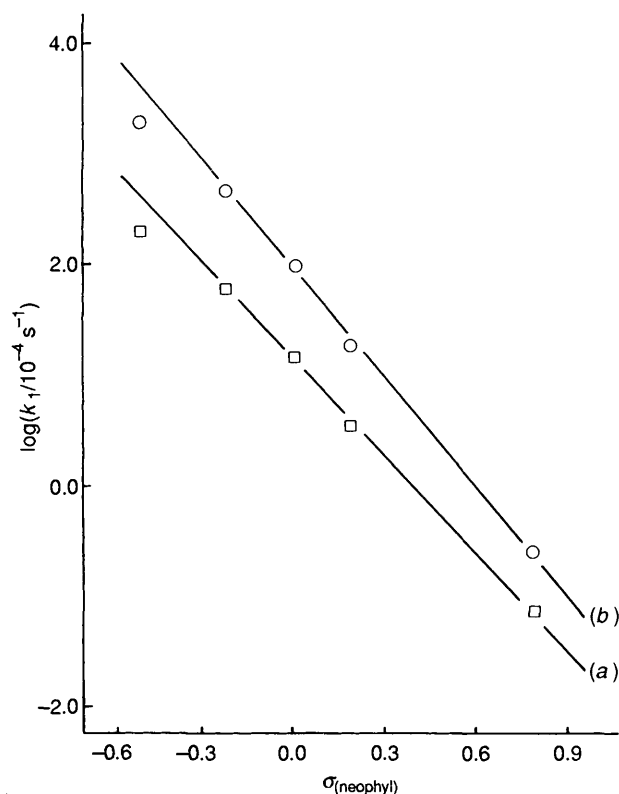


Fig. 2 Hammett ρ_Y plots for the solvolysis of PPB in HFIP at 50.0 °C. (a) $Z = p\text{-Me}$; (b) $Z = p\text{-NO}_2$

of ρ_{YZ} in HFIP, *i.e.*, for the k_Δ pathway, is *ca.* twice that for the k_S pathway in MeOH. The distance between the two substituents Y and Z in TS_S is longer than that in TS_Δ by an intervening CH₂ group which is bypassed in TS_Δ. Since one such nonconjugative intervening group (CH₂ or CO) is known to reduce ρ values by a factor of $\sim 2.4\text{--}2.8$,⁷ an increase of $|\rho_{YZ}|$ from 0.21 (at 50 °C) for TS_S to 0.41 (at 50.0 °C) for TS_Δ could be a very good indication that the degree of bond-breaking in the two TS_S is similar. Alternatively since the interaction of the two substituents Y and Z is possible *via* two routes in TS_Δ, it will be enhanced and hence the magnitude of ρ_{YZ} should increase accordingly.⁷ Therefore the degree of bond breaking in TS_Δ may be somewhat greater than that in TS_S, considering the possible enhancement of interaction by the extra interaction route and the bypassing of an extra CH₂ group in TS_Δ.¹⁸

The two distinctive large ρ_{YZ} values provide strong evidence for the bound TS in both the k_S and k_Δ pathways, *i.e.*, k_S and k_Δ are strongly solvent- and neighbouring group-assisted processes, respectively. Rapidly equilibrating classical or partially bridged-ion formulations^{1c} are untenable, since they are essentially open carbonium ion processes^{1a} and would require vanishing ρ_{YZ} values, $|\rho_{YZ}| \approx 0$.¹⁸

Activation parameters,^{12b} ΔH^\ddagger and ΔS^\ddagger , have been estimated from k_1 values in MeOH at three temperatures, as shown in Table 9. The ΔH^\ddagger and ΔS^\ddagger values increase with a weaker nucleofuge ($Z = p\text{-Me}$) and with a more electron donating substituent in the substrate ($Y = p\text{-MeO}$), reflecting a greater degree of bond-breaking in the more aryl-assisted processes. The unimolecular decomposition of PPB into the ion-pair like TS of the aryl-assisted path should have a relatively high ΔH^\ddagger and ΔS^\ddagger , similarly to the S_N1 reactions.

We conclude that the solvolyses of PPBs are solvent-assisted in MeOH but aryl-assisted in HFIP; the abnormal behaviour of the $Y = p\text{-MeO}$ group stems from its strong enhancement of

Table 9 Activation parameters,^a ΔH^\ddagger (kcal mol⁻¹)^b and ΔS^\ddagger (cal deg⁻¹ mol⁻¹)^b for the solvolysis of PPBs in 100% MeOH

Y	Z							
	<i>p</i> -Me		H		<i>p</i> -Cl		<i>p</i> -NO ₂	
	ΔH^\ddagger	$-\Delta S^\ddagger$	ΔH^\ddagger	$-\Delta S^\ddagger$	ΔH^\ddagger	$-\Delta S^\ddagger$	ΔH^\ddagger	$-\Delta S^\ddagger$
<i>p</i> -MeO	25.3	0.7	25.0	1.7	23.6	3.7	21.4	7.2
<i>p</i> -Me	23.5	9.3	22.9	9.9	22.5	10.1	20.5	13.0
H	22.7	12.0	21.6	14.4	20.8	15.5	19.2	17.7
<i>p</i> -Cl	22.5	13.1	21.5	15.4	20.5	17.0	18.8	19.6
<i>p</i> -NO ₂	22.0	15.6	21.3	16.9	20.3	18.8	17.9	23.6

^a Correlation coefficients; $r > 0.995$. ^b 1 cal = 4.184 J.

aryl participation in MeOH and from hydrogen bonding of the methoxy oxygen in the acidic solvent, HFIP. The two competing pathways, k_S and k_A , are discrete and the transition states involved, TS_S and TS_A, are strongly bound to the solvent and aryl group, respectively.

Experimental

Materials.—Merck GR grade methanol was used without further purification. Acetonitrile was distilled after refluxing over P₂O₅ and K₂CO₃.¹⁹ In the preparation of substituted 1-phenyl-2-propyl benzenesulphonates, the corresponding benzyl bromide or phenyl acetone was reacted with Grignard reagent²⁰ or an appropriate reducing agent²¹ (LiAlH₄ or LiBH₄) to product 1-phenyl-2-propyl alcohol, which was then converted to the benzenesulphonate by reacting with benzenesulphonyl chloride using Tipson's method.²² GR grade hexafluoropropan-2-ol (99+%) and CH₃OD (99.5+%) from Aldrich were used without further purification. HFIP is extremely hygroscopic, so special care was taken in its handling and storage.

Spectroscopic Analyses.²³—All ¹H NMR spectra were recorded at 60 MHz in CDCl₃, referenced to SiMe₄. The spectroscopic analyses, together with other data, are as follows.

p-CH₃O-C₆H₄CH₂CH(CH₃)OSO₂C₆H₄-*p*-CH₃. M.p. 79.3 °C (lit.,^{1a} 80 °C); ν_{\max} (KBr)/cm⁻¹ 1595, 1510 (C-C aromatic), 1350, 1160 (SO₂), 1250, 1030 (C-O), 1010 (SO) and 810 (S-O-C); δ_H 1.3 (CH₃, d, 3 H), 2.4 (*p*-CH₃, 3 H, s), 2.7 (-CH₂-, 2 H, d), 3.7 (*p*-CH₃O, 3 H, s), 4.6 (CH, 1 H, q) and 6.5-7.6 (phenyl, 8 H, m); (Found: C, 63.8; H, 6.35. Calc. for C₁₇H₂₀O₄S: C, 63.73; H, 6.29).

p-CH₃O-C₆H₄CH₂CH(CH₃)OSO₂C₆H₅. Oil; ν_{\max} /cm⁻¹ 1610, 1510 (C-C aromatic), 1350, 1175 (SO₂), 1250, 1030 (C-O) and 810 (S-O-C); δ_H 1.3 (CH₃, 3 H, d), 2.7 (-CH₂-, 2 H, d), 3.7 (*p*-CH₃O, 3 H, s), 4.6 (CH, 1 H, q) and 6.5-7.6 (phenyl, 8 H, m); (Found: C, 62.85; H, 6.0. Calc. for C₁₆H₁₈O₄S: C, 62.72; H, 5.92).

p-CH₃O-C₆H₄CH₂CH(CH₃)OSO₂C₆H₄-*p*-Cl. M.p. 90-92 °C; ν_{\max} /cm⁻¹ 1610, 1510 (C-C aromatic), 1340, 1170 (SO₂), 1245, 1030 (C-O), 1085 (C-Cl) and 820 (S-O-C); δ_H 1.3 (CH₃, 3 H, d), 2.7 (-CH₂-, 2 H, d), 3.7 (*p*-CH₃O, 3 H, s), 4.6 (CH, 1 H, q), 6.5-7.8 (phenyl, 8 H, m); (Found: C, 56.2; H, 5.0. Calc. for C₁₆H₁₇O₄SCl: C, 56.39; H, 5.03).

p-CH₃O-C₆H₄CH₂CH(CH₃)OSO₂C₆H₄-*p*-NO₂. M.p. 91 °C; ν_{\max} /cm⁻¹ 1610, 1510 (C-C aromatic), 1525, 1345 (NO₂), 1365, 1175 (SO₂), 1245, 1030 (C-O) and 815 (S-O-C); δ_H 1.4 (CH₃, 3 H, d), 2.7 (-CH₂-, 2 H, d), 3.7 (*p*-CH₃O, 3 H, s), 4.6 (CH, 1 H, q) and 6.5-7.8 (phenyl, 8 H, m); (Found: C, 54.8; H, 4.90; N, 4.05. Calc. for C₁₆H₁₇O₆NS: C, 54.69; H, 4.88; N, 3.99).

p-CH₃-C₆H₄CH₂CH(CH₃)OSO₂C₆H₄-*p*-CH₃. M.p. 48.9-

50 °C (lit.,^{1a} 49.3-50.4 °C); ν_{\max} /cm⁻¹ 1595, 1515 (C-C aromatic), 1355, 1170 (SO) and 805 (S-O-C); δ_H 1.3 (CH₃, 3 H, d), 2.3 (*p*-CH₃, 3 H, s), 2.5 (*p*-CH₃, 3 H, s), 2.8 (-CH₂-, 2 H, d), 4.7 (CH, 1 H, q) and 6.8-7.8 (phenyl, 8 H, m); (Found: C, 67.2; H, 6.7. Calc. for C₁₇H₂₀O₃S: C, 67.08; H, 6.62).

p-CH₃-C₆H₄CH₂CH(CH₃)OSO₂C₆H₅. Oil; ν_{\max} /cm⁻¹ 1610, 1510 (C-C aromatic), 1355, 1180 (SO₂), 805 (S-O-C); δ_H 1.3 (CH₃, 3 H, d), 2.3 (*p*-CH₃, 3 H, s), 2.8 (-CH₂-, 2 H, d), 4.7 (CH, 1 H, q) and 6.8-7.8 (phenyl, 9 H, m); (Found: C, 66.4; H, 6.40. Calc. for C₁₆H₁₈O₃S: C, 66.18; H, 6.25).

p-CH₃-C₆H₄CH₂CH(CH₃)OSO₂C₆H₄-*p*-Cl. M.p. 73-75 °C; ν_{\max} /cm⁻¹ 1610, 1515 (C-C aromatic), 1355, 1180 (SO₂), 805 (S-O-C); δ_H 1.4 (CH₃, 3 H, d), 2.3 (*p*-CH₃, 3 H, s), 2.8 (-CH₂-, 2 H, d), 4.7 (CH, 1 H, q) and 6.7-7.7 (phenyl, 8 H, m); (Found: C, 59.3; H, 5.3. Calc. for C₁₆H₁₇O₃SCl: C, 59.16; H, 5.28).

p-CH₃-C₆H₄CH₂CH(CH₃)OSO₂C₆H₄-*p*-NO₂. M.p. 94-95 °C; ν_{\max} /cm⁻¹ 1610, 1515 (C-C aromatic), 1525, 1345 (NO₂), 1355, 1180 (SO₂) and 805 (S-O-C); δ_H 1.4 (CH₃, 3 H, d), 2.3 (*p*-CH₃, 3 H, s), 2.8 (-CH₂-, 2 H, d), 4.7 (CH, 1 H, q) and 6.8-7.6 (phenyl, 8 H, m); (Found: C, 57.9; H, 5.3; N, 4.14. Calc. for C₁₆H₁₇O₅NS: C, 57.30; H, 5.11; N, 4.18).

C₆H₅CH₂CH(CH₃)OSO₂C₆H₄-*p*-CH₃. M.p. 91 °C (lit.^{1a} 91.2-92.4 °C); ν_{\max} /cm⁻¹ 1595, 1490 (C-C aromatic), 1340, 1165 (SO₂), 1020 (SO) and 810 (S-O-C); δ_H 1.3 (CH₃, 3 H, d), 2.4 (*p*-CH₃, 3 H, s), 2.8 (-CH₂-, 2 H, d), 4.6 (CH, 1 H, q) and 6.8-7.8 (phenyl, 8 H, m); (Found: C, 65.9; H, 6.4. Calc. for C₁₆H₁₈O₃S: C, 66.18; H, 6.25).

C₆H₅CH₂CH(CH₃)OSO₂C₆H₅. Oil; ν_{\max} /cm⁻¹ 1600, 1495 (C-C aromatic), 1355, 1180 (SO₂) and 1020 (SO); δ_H 1.4 (CH₃, 3 H, d), 2.8 (-CH₂-, 2 H, d), 4.7 (CH, 1 H, q) and 6.8-7.8 (phenyl, 10 H, m); (Found: C, 65.2; H, 5.8. Calc. for C₁₅H₁₆O₃S: C, 65.19; H, 5.84).

C₆H₅CH₂CH(CH₃)OSO₂C₆H₅-*p*-Cl. M.p. 47 °C; ν_{\max} /cm⁻¹ 1585, 1495 (C-C aromatic), 1355, 1180 (SO₂) and 1010 (SO); δ_H 1.4 (CH₃, 3 H, d), 2.8 (-CH₂-, 2 H, d), 4.7 (CH, 1 H, q) and 6.9-7.9 (phenyl, 9 H, m); (Found: C, 58.10; H, 4.9. Calc. for C₁₅H₁₅O₃SCl: C, 57.97; H, 4.86).

C₆H₅CH₂CH(CH₃)OSO₂C₆H₄-*p*-NO₂. M.p. 94-95 °C; ν_{\max} /cm⁻¹ 1605, 1495 (C-C aromatic), 1530, 1345 (NO₂), 1360 and 1180 (SO₂); δ_H 1.4 (CH₃, 3 H, d), 2.9 (-CH₂-, 2 H, d), 4.8 (CH, 1 H, q) and 6.9-8.0 (phenyl, 9 H, m); (Found: C, 56.2; H, 4.75; H, 4.3. Calc. for C₁₅H₁₅O₅NS: C, 56.06; H, 4.70; N, 4.36).

p-Cl-C₆H₄CH₂CH(CH₃)OSO₂C₆H₄-*p*-CH₃. M.p. 74-75 °C (lit.,^{1a} 74.8-76.0 °C); ν_{\max} /cm⁻¹ 1610, 1515 (C-C aromatic), 1355, 1180 (SO₂) and 805 (S-O-C); δ_H 1.4 (CH₃, 3 H, d), 2.4 (*p*-CH₃, 3 H, s), 2.8 (-CH₂-, 2 H, d), 4.6 (CH, 1 H, q), 6.8-7.5 (phenyl, 8 H, m); (Found: C, 59.30; H, 5.3. Calc. for C₁₆H₁₇O₃SCl: C, 59.16; H, 5.28).

p-Cl-C₆H₄CH₂CH(CH₃)OSO₂C₆H₅. M.p. 78-81 °C; ν_{\max} /cm⁻¹ 1585, 1495 (C-C aromatic), 1355, 1180 (SO₂) and 1010 (S-O-C); δ_H 1.4 (CH₃, 3 H, d), 2.8 (-CH₂-, 2 H, d), 4.7 (CH, 1 H, q) and 6.9-7.6 (phenyl, 8 H, m); (Found: C, 57.85; H, 4.8. Calc. for C₁₅H₁₅O₃SCl: C, 57.97; H, 4.86).

p-Cl-C₆H₄CH₂CH(CH₃)OSO₂C₆H₄-*p*-Cl. M.p. 90-92 °C; ν_{\max} /cm⁻¹ 1600, 1510 (C-C aromatic), 1360, 1170 (SO₂) and 840 (S-O-C); δ_H 1.4 (CH₃, 3 H, d), 2.8 (-CH₂-, 2 H, d), 4.7 (CH, 1 H, q), 6.9-7.5 (phenyl, 8 H, m); (Found: C, 52.3; H, 4.1. Calc. for C₁₅H₁₄O₃SCl₂: C, 52.18; H, 4.09).

p-Cl-C₆H₄CH₂CH(CH₃)OSO₂C₆H₄-*p*-NO₂. M.p. 110.2 °C; ν_{\max} /cm⁻¹ 1605, 1510 (C-C aromatic), 1515, 1345 (NO₂), 1365 and 1175 (SO₂); δ_H 1.4 (CH₃, 3 H, d), 2.8 (-CH₂-, 2 H, d), 4.7 (CH, 1 H, q) and 6.8-8.2 (phenyl, 8 H, m); (Found: C, 50.68; H, 4.05; N, 3.88. Calc. for C₁₅H₁₄O₅NSCl: C, 50.64; H, 3.97; N, 3.94).

p-NO₂-C₆H₄CH₂CH(CH₃)OSO₂C₆H₄-*p*-CH₃. M.p. 114-116 °C (lit.,^{1a} 115.8-117.2 °C); ν_{\max} /cm⁻¹ 1600, 1495 (C-C aromatic), 1510, 1340 (NO₂), 1360, 1170 (SO₂) and 805

(S–O–C); δ_{H} 1.4 (CH₃, 3 H, d), 2.4 (*p*-CH₃, 3 H, s), 2.9 (–CH₂–, 2 H, d), 4.7 (CH, 1 H, q), 7.0–8.0 (phenyl, 8 H, m); (Found: C, 57.2; H, 5.10; N, 4.2. Calc. for C₁₆H₁₇O₅NS: C, 57.30; H, 5.11; N, 4.18).

p-NO₂-C₆H₄CH₂CH(CH₃)OSO₂C₆H₅. M.p. 97–99 °C; $\nu_{\text{max}}/\text{cm}^{-1}$ 1600, 1510 (C–C aromatic), 1500, 1340 (NO₂), 1360, 1170 (SO₂); δ_{H} 1.4 (CH₃, 3 H, d), 2.9 (–CH₂–, 2 H, d), 4.8 (CH, 1 H, q) and 7.0–8.0 (phenyl, 9 H, m); (Found: C, 56.2; H, 4.7; N, 4.3. Calc. for C₁₅H₁₅O₅NS: C, 56.06; H, 4.70; N, 4.36).

p-NO₂-C₆H₄CH₂CH(CH₃)OSO₂C₆H₄-*p*-Cl. M.p. 119–122 °C; $\nu_{\text{max}}/\text{cm}^{-1}$ 1605, 1510 (C–C aromatic), 1515, 1345 (NO₂), 1365 and 1175 (SO₂); δ_{H} 1.4 (CH₃, 3 H, d), 3.0 (–CH₂–, 2 H, d), 4.8 (CH, 1 H, q) and 7.1–8.1 (phenyl, 8 H, m); (Found: C, 50.80; H, 4.0; N, 3.9. Calc. for C₁₅H₁₄O₅NSCl: C, 50.64; H, 3.97; N, 3.94).

p-NO₂-C₆H₄CH₂CH(CH₃)OSO₂C₆H₄-*p*-NO₂. M.p. 138–141 °C; $\nu_{\text{max}}/\text{cm}^{-1}$ 1605, 1510 (C–C aromatic), 1525, 1345 (NO₂), 1370, 1180 (SO₂) and 850 (S–O–C); δ_{H} 1.4 (CH₃, 3 H, d), 3.0 (–CH₂–, 2 H, d), 4.9 (CH, 1 H, q) and 7.1–8.2 (phenyl, 8 H, m); (Found: C, 49.3; H, 3.9; N, 7.6. Calc. for C₁₅H₁₄O₇N₂S: C, 49.18; H, 3.85; N, 7.65).

Kinetic Procedures.—The pseudo first-order rate constants, k_1 , were determined conductometrically using the Guggenheim method.²⁴ The k_1 values reported in Table 1 are the averages of more than three determinations which were found to agree within $\pm 3\%$.²⁵ The elimination reaction was negligible according to the product analysis.

Product Analysis.—Products from the solvolysis of *p*-CH₃O-C₆H₄CH₂CH(CH₃)OSO₂C₆H₄-*p*-CH₃ were found to be the following two compounds.

p-CH₃O-C₆H₄CH₂CH(CH₃)OCH₃. $\nu_{\text{max}}(\text{NaCl})/\text{cm}^{-1}$ 1610, 1510 (C–C aromatic), 1460 (–CH₂–), 1380 (CH₃), 1245 (C–O aromatic) and 1125 (C–O aliphatic); δ_{H} (60 MHz, solvent CDCl₃ standard SiMe₄) 1.1 (CH₃, 3 H, d), 2.7 (–CH₂–, 2 H, d), 3.3 (CH₃O, 3 H, s), 3.4 (CH, 1 H, q), 3.7 (*p*-CH₃O, 3 H, s) and 6.6–7.1 (phenyl, 4 H, m); (Found: C, 73.4; H, 9.0. Calc. for C₁₁H₁₆O₂: C, 73.30; H, 8.95).

p-CH₃-C₆H₄SO₂OH. M.p. 104.0 °C; $\nu_{\text{max}}(\text{KBr})/\text{cm}^{-1}$ 2200 (S–OH), 1600, 1460 (C–C aromatic), 1365, 1180 (SO₃[–]) and 1015 (SO); δ_{H} (60 MHz, solvent dimethyl sulphoxide, standard SiMe₄) 2.3 (*p*-CH₃, 3 H, s), 6.1 (–OH, 1 H, s) and 7.0–7.6 (phenyl, 4 H, m); (Found: C, 53.8; H, 5.2. Calc. for C₇H₈O₂S: C, 53.83; H, 5.16).

Acknowledgements

We are grateful to the Korea Science and Engineering Foundation and the Ministry of Education for support of this work. We also thank Dr. T. W. Bentley of Swansea for valuable discussion.

References

- (a) F. L. Schadt, III, C. L. Lancelot and P. V. R. Schleyer, *J. Am. Chem. Soc.*, 1978, **100**, 228; (b) D. J. Raber, J. M. Harris and P. v. R. Schleyer, *J. Am. Chem. Soc.*, 1971, **93**, 4829; (c) H. C. Brown, C. J. Kim, C. J. Lancelot and P. v. R. Schleyer, *J. Am. Chem. Soc.*, 1970, **92**, 5244; (d) H. C. Brown, R. Bernheimer, C. J. Kim and S. E. Scheppele, *J. Am. Chem. Soc.*, 1967, **89**, 370; (e) H. C. Brown, K. J. Morgan and F. J. Chloupek, *J. Am. Chem. Soc.*, 1965, **87**, 2137; (f) V. J. Cram and J. A. Thompson, *J. Am. Chem. Soc.*, 1967, **89**, 6766; (g) S. Winstein and B. K. Morse, *J. Am. Chem. Soc.*, 1952, **74**, 1133.
- (a) W. J. Hehre, *J. Am. Chem. Soc.*, 1972, **94**, 5919; (b) E. I. Snyder, *J. Am. Chem. Soc.*, 1970, **92**, 7529; (c) W. W. Schoeller and G. E. Schenck, *Tetrahedron*, 1973, **29**, 425; (d) W. W. Schoeller and J. Dahm, *Tetrahedron*, 1973, **29**, 3237; (e) W. W. Schoeller, *J. Chem. Soc., Chem. Commun.*, 1974, 872.
- S. Fornarini, C. Sparapani and M. Speranza, *J. Am. Chem. Soc.*, 1988, **110**, 34.

- (a) I. Lee and S. C. Sohn, *J. Chem. Soc., Chem. Commun.*, 1986, 1058; (b) I. Lee, *Bull. Korean Chem. Soc.*, 1987, **8**, 426; (c) I. Lee, H. Y. Kim and H. K. Kang, *J. Chem. Soc., Chem. Commun.*, 1987, 1216; (d) I. Lee, *Bull. Korean Chem. Soc.*, 1987, **8**, 200; (e) I. Lee and H. K. Kang, *Tetrahedron Lett.*, 1987, **28**, 1183; (f) I. Lee, H. K. Kang and H. W. Lee, *J. Am. Chem. Soc.*, 1987, **109**, 7472; (g) I. Lee, C. S. Shim, S. Y. Chung and H. W. Lee, *J. Chem. Soc., Perkin Trans. 2*, 1988, 975; (h) I. Lee, H. Y. Kim, H. K. Kang and H. W. Lee, *J. Org. Chem.*, 1988, **53**, 2678; (i) I. Lee, C. S. Shim, S. Y. Chung, H. Y. Kim and H. W. Lee, *J. Chem. Soc., Perkin Trans. 2*, 1988, 1919; (j) I. Lee and I. C. Kim, *Bull. Korean Chem. Soc.*, 1988, **9**, 133; (k) I. Lee, H. Y. Kim, H. W. Lee and I. C. Kim, *J. Phys. Org. Chem.*, 1989, **2**, 35; (l) I. Lee, C. S. Shim and H. W. Lee, *J. Phys. Org. Chem.*, 1989, **2**, 484; (m) I. Lee, C. S. Shim and H. W. Lee, *J. Chem. Soc., Perkin Trans. 2*, 1989, 1205; (n) I. Lee, C. Huh, H. J. Koh and H. W. Lee, *Bull. Korean Chem. Soc.*, 1988, **9**, 376; (o) I. Lee, Y. H. Choi, K. W. Rhyu and C. S. Shim, *J. Chem. Soc., Perkin Trans. 2*, 1989, 1881; (p) I. Lee, W. H. Lee and H. W. Lee, *J. Phys. Org. Chem.*, 1990, **3**, 545; (q) I. Lee, H. J. Koh, C. Huh and H. W. Lee, *J. Phys. Org. Chem.*, 1990, **3**, 550.
- (a) I. Lee, *Bull. Korean Chem. Soc.*, 1987, **8**, 200; (b) *Bull. Korean Chem. Soc.*, 1988, **9**, 179.
- (a) G. L. Han, J. H. Park and I. Lee, *Bull. Korean Chem. Soc.*, 1987, **8**, 393; (b) I. Lee, Y. H. Choi, H. W. Lee and B. C. Lee, *J. Chem. Soc., Perkin Trans. 2*, 1988, 1537.
- (a) R. D. Gilliom, *Introduction of Physical Organic Chemistry*, Addison-Wesley, Reading, 1970, p. 146; (b) B. M. Jacobson and E. S. Lewis, *J. Org. Chem.*, 1988, **53**, 446; (c) M. R. F. Siggel, A. Streitwieser, Jr. and T. D. Thomas, *J. Am. Chem. Soc.*, 1988, **110**, 8022; (d) K. Okamoto, K. Takeuchi and T. Inoue, *J. Chem. Soc., Perkin Trans. 2*, 1980, 842 and papers cited therein.
- (a) O. Rogne, *J. Chem. Soc. B*, 1971, 1855; (b) I. Lee and I. S. Koo, *J. Korean Chem. Soc.*, 1981, **25**, 7; (c) I. Lee, H. W. Lee and S.-M. La, *J. Korean Chem. Soc.*, 1980, **24**, 115.
- I. Lee, B.-S. Lee, S. C. Sohn and B. C. Lee, *Bull. Korean Chem. Soc.*, 1985, **6**, 19.
- (a) I. Lee, S.-M. La, B.-S. Lee and S. C. Sohn, *J. Korean Chem. Soc.*, 1984, **28**, 210.
- T. W. Bentley, *Prog. Phys. Org. Chem.*, 1990, **17**, 121.
- R. D. Gilliom, *Introduction to Physical Organic Chemistry*, Addison-Wesley, Reading, 1970, (a) p. 165; (b) p. 167; (c) E. Grunwald and S. Winstein, *J. Am. Chem. Soc.*, 1948, **70**, 846.
- I. S. Koo, T. S. Bentley, D. H. Kang and I. Lee, *J. Chem. Soc., Perkin Trans. 2*, in the press.
- T. B. Crumpler and J. H. Yoh, *Chemical Computations and Error*, Wiley, New York, 1940, p. 178.
- (a) R. V. Hoffmann and E. L. Belfoure, *J. Am. Chem. Soc.*, 1982, **104**, 2183; (b) R. V. Hoffmann and J. M. Shankweiler, *J. Am. Chem. Soc.*, 1986, **108**, 5536.
- J. Shorter, *Correlation Analysis of Organic Reactivity*, Research Studies Press, Chichester, 1982, ch. 2.
- (a) J. P. Richard, M. E. Rothenberg and W. P. Jencks, *J. Am. Chem. Soc.*, 1984, **106**, 1361; (b) P. R. Young and W. P. Jencks, *J. Am. Chem. Soc.*, 1977, **99**, 8238; (c) S. Winstein, B. K. Morse, E. Grunwald, K. C. Schreiber and J. Corse, *J. Am. Chem. Soc.*, 1952, **74**, 1113; (d) G. M. Loudon and C. J. Berke, *J. Am. Chem. Soc.*, 1974, **96**, 4508.
- I. Lee, *Chem. Soc. Rev.*, 1990, **19**, 317.
- D. D. Perrin, W. L. F. Armarego and D. R. Perrin, *Purification of Laboratory Chemicals*, 2nd edn., Pergamon Press, Oxford, 1980, p. 559.
- C. G. Overberger, J. H. Saunders, R. E. Allen and R. Gander, *Org. Synth.*, Coll. Vol. III, 1960, p. 200.
- C. E. Sroog and H. M. Woodburn, *Org. Synth.*, Coll. Vol. IV, 1963, p. 271.
- R. S. Tipson, *J. Org. Chem.*, 1944, **9**, 235.
- (a) C. J. Pouchert, *The Aldrich Library of Infrared Spectra*, 3rd edn., Aldrich, Milwaukee, WI, USA, 1981; (b) C. J. Pouchert, *The Aldrich Library of NMR Spectra*, 2nd edn., Aldrich, Milwaukee, WI, USA, 1983.
- E. A. Guggenheim, *Philos. Mag.*, 1926, **2**, 538.
- (a) M. J. Moroney, *Facts from Figures*, Penguin Books, Harmondsworth, Middlesex, 1956, 295; (b) S. Wold and N. Sjöström, in *Correlation Analysis in Chemistry. Recent Advances*, eds. N. B. Chapman and J. Shorter, Plenum, New York, 1978, ch. 1.