

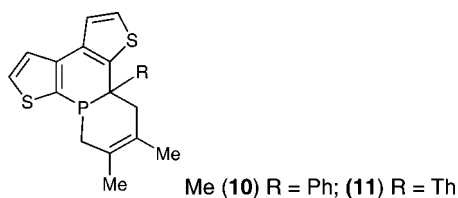
# Additions and Corrections

---

2008, Volume 27

**Ngoc Hoa Tran Huy,\* Bruno Donnadieu, and François Mathey\*:**  
The Phosphaalkene-like Reactivity of Dithienophosphinines.

Pages 4005–4008. Throughout the paper, the structures of the [2+4] adducts **10** and **11** have been misformulated. The correct structures are



In line 6 of the first paragraph of the Results and Discussion, the compound should be 1,2-dihydrophosphinine.

In eq 1, both **7** and **8** are mixtures of two enantiomers. Only one of these is shown in both cases.

In the Experimental Section, in the paragraph “[4+2] Cycloadducts **10** and **11**”, heating was carried out for 60 h in the synthesis of **10**.

For Figure 1, the beginning of the caption should read “Stereochemistry of 1-phenyl-2-thienyl-1,2-dihydrodithienophosphinine (**8**)...”.

OM800754E

10.1021/om800754e

Published on Web 08/13/2008