

E. Morris.
Door & Drawer Plate.
N^o 3,565. Patented Apr. 25, 1844.

Fig: 1.

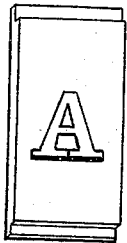


Fig: 3.



Fig: 4.



Fig: 5.

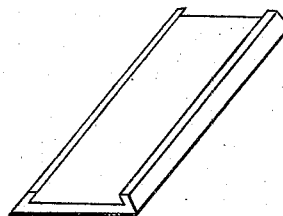


Fig: 6.

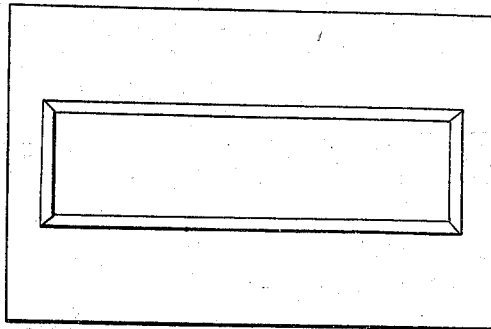


Fig: 2.

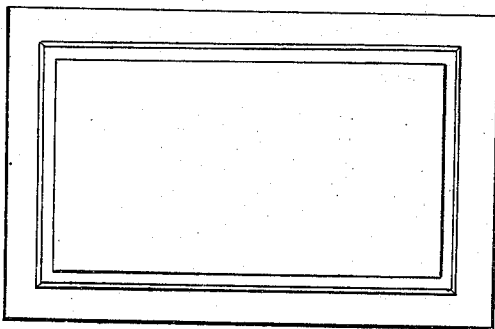
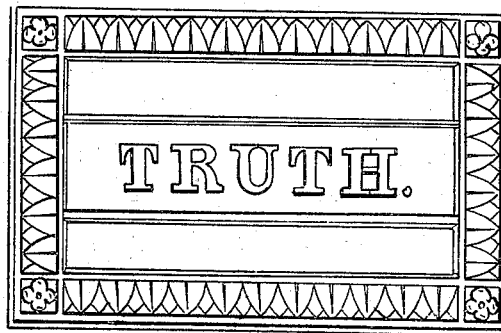


Fig: 7.



UNITED STATES PATENT OFFICE.

EDMUND MORRIS, OF PHILADELPHIA, PENNSYLVANIA.

METHOD OF MAKING DOOR PLATES AND SIGNS OF SEPARATE TYPES OR LETTERS.

Specification of Letters Patent No. 3,565, dated April 25, 1844.

To all whom it may concern:

Be it known that I, EDMUND MORRIS, of the city of Philadelphia, in the county of Philadelphia and State of Pennsylvania, have invented a new and Improved Mode of Constructing Plates for Doors, Signs, Trunks, and other Articles Requiring Marks or Numbers; and I do hereby declare that the following is a full and exact description.

The nature of my invention consists in the forming of permanent plates or signs out of separate movable letters, the same being secured in two different ways; and to enable others skilled in the art to make and use my invention, I will proceed to describe its construction and operation.

The letters of which the plates or signs are composed, are cast in relief each on a separate piece of metal (as is represented in the Figure No. 1, accompanying this) the said pieces having on each end of them a rabbet cut out from the same side or face which holds the letter. These letters are dropped into a rabbet on the back side of a border, either plain or ornamental (as shown in Fig. 2) the rabbets on the letters and borders being made to fit into each other, and the blank spaces before or after the letters, or between the words, being filled with pieces of metal similarly rabbeted, so as to fill up the entire space between the ends of the border forming the plate or sign. When the letters and blanks have been adjusted in the order desired, a block of mahogany or other wood is placed against the back of the plate, and screwed fast to the same, thus keeping the letters and blanks firmly in their places. This block is then screwed to the door or place where it is intended to be affixed, in the ordinary way. Or instead of the pieces which contain the letters being furnished with rabbets, the latter may be omitted (as shown in Fig. 3) and the letter being dropped into the rabbet on

the back side of the border, if made of the proper thinness, the effect will be the same; for in either case the back of the letters will come flush with the back of the plate or border, so that the ordinary wooden block will keep the whole in their places.

Another mode of accomplishing the same result, which I have invented, is as follows—The letters are cast in relief, on a piece beveled at each end (as shown in Fig. 4). These letters are slid like a dovetail, into grooves cut to fit the beveled ends, said grooves being formed in two beads attached to a flat piece of metal, (as shown in Fig. 5) the entire piece, that is Fig. 5, being cast with the beads on it, but the grooves being afterwards cut out by a tool made for that purpose. The four sides, or the two sides and two ends of Fig. 5, are also beveled, and the whole piece, thus furnished with the desired name, is dropped into the back side of a plate (as shown in Fig. 6) with a hole cut in its center, and the hole beveled to fit Fig. 5. The back of the two thus come flush, and No. 5 is kept in its place by being affixed to the ordinary wooden block used for door plates. The letters when adjusted in Fig. 5, are kept from sliding out at either end, by a border cast in relief on the edge of the plate (as shown in Fig. 7) the blank pieces of metal extending from the letters, both ways until they touch the embossed or raised border. In both cases, the joints between the letters and blanks are concealed by the ground work being fluted with deep parallel lines.

What I claim as my invention, and desire to secure by Letters Patent, is—

The manner of securing the letters in plates or signs, so as to construct both of the latter out of movable types or letters.

EDMUND MORRIS.

Witnesses:

GIDEON LLOYD,
WILLIAM E. LAFFERTY.