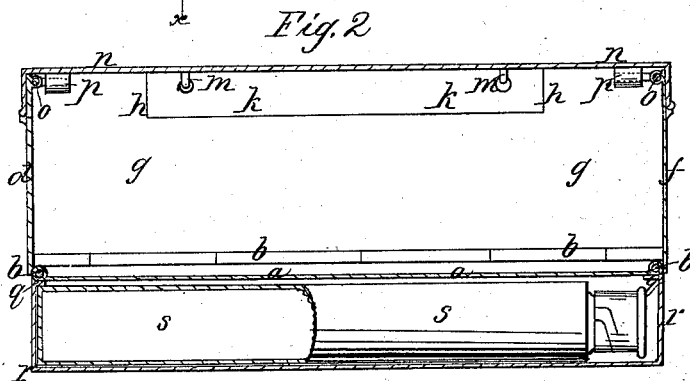
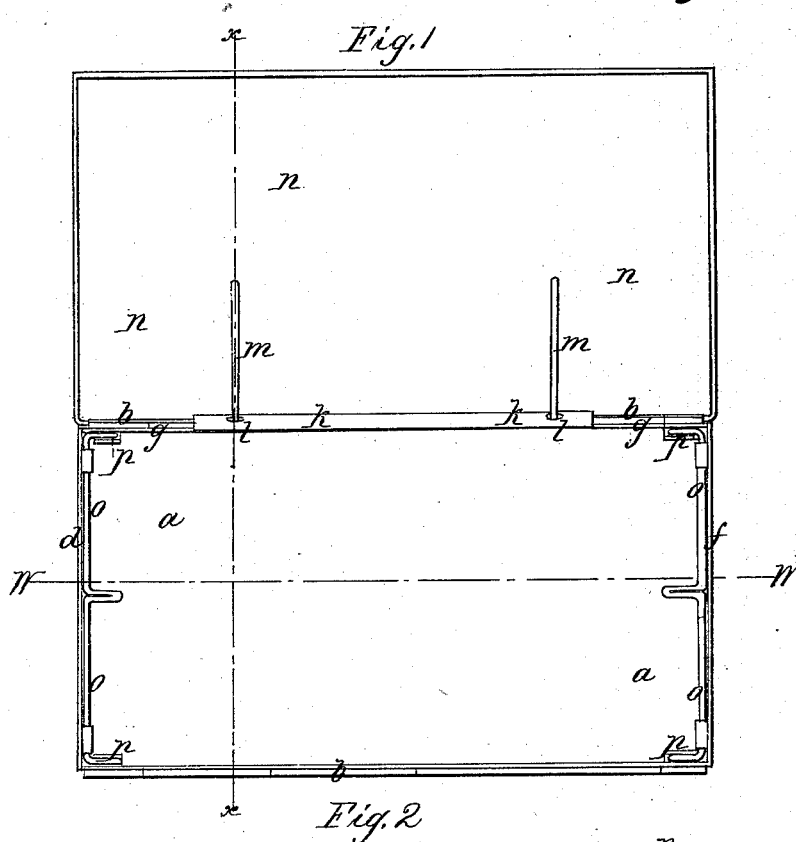


J. F. Morgan,
Lunch Box,
No 47,559, Patented May 2, 1865.



Witnesses
W. H. Healey
J. M. Corington

Inventor's
J. F. Morgan
By [Signature]

Sheet 2-2, Sheets.

J. F. Morgan,
Lunch Box,
No 47,559, Patented May 2, 1865.

Fig. 3

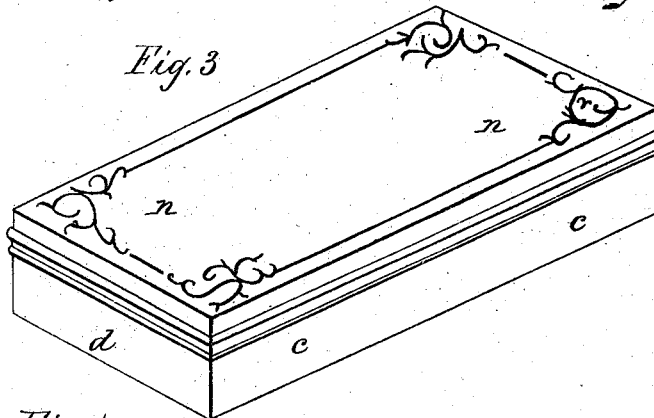


Fig. 4

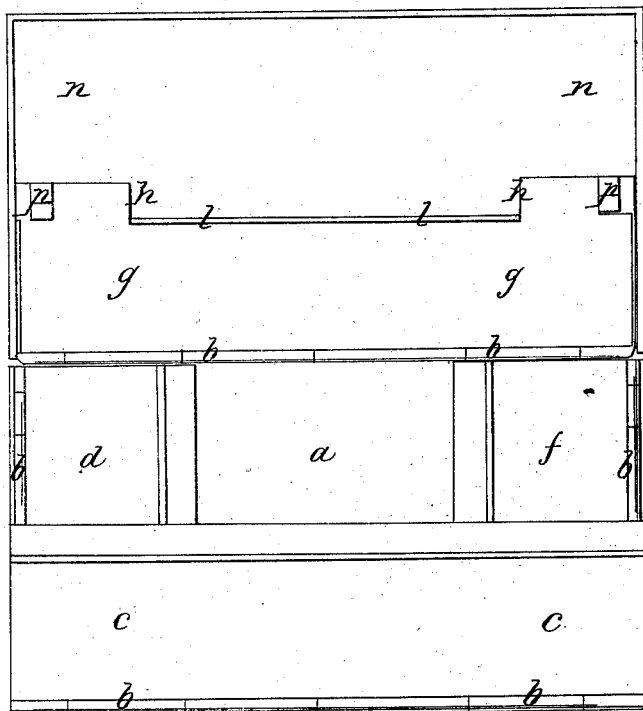
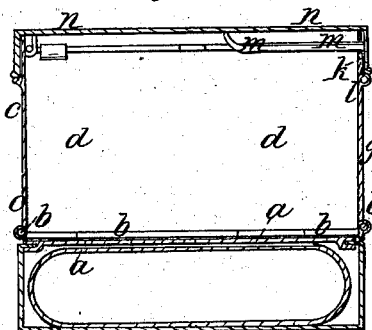


Fig. 5



Witnesses

W. A. Heame
W. H. Corning

Inventor

J. F. Morgan
By Munnell

UNITED STATES PATENT OFFICE.

JOHN F. MORGAN, OF BOSTON, MASSACHUSETTS.

IMPROVED LUNCH-BOX.

Specification forming part of Letters Patent No. 47,559, dated May 2, 1865.

To all whom it may concern:

Be it known that I, JOHN F. MORGAN, of Boston, in the county of Suffolk and State of Massachusetts, have invented a new and useful Improvement in Lunch or Dinner Boxes; and I do hereby declare that the following is a full, clear, and exact description thereof, which will enable others skilled in the art to make and use the same, reference being had to the accompanying drawings, forming part of this specification.

The present invention relates to a new and peculiar manner of constructing a lunch or dinner box, so called; and it consists in so attaching the sides of the box to the cover and bottom portions or plates thereof that when the box is empty the said side plates can be all folded and laid down upon the bottom plate, where they are held together by simply closing the cover portion over the same, whereby the lunch-box, when empty, can be and is greatly reduced in size and bulk, thus producing a much more convenient and portable box than those heretofore in common use for the carrying of a lunch or dinner, the great importance of which is evident to all persons. This folding construction of the box does not in the least interfere with its being used for the reception of any desired articles of food, and when put into shape to receive the same, is sufficiently firm, strong, and stiff for all practical purposes.

In connection with the box above described I also use a drawer, which slides on suitable guides of the bottom plate, in which it is intended to insert a flask suitable for holding coffee or any other liquid which it may be desired to carry.

In accompanying plate of drawings, my improvement is represented, Figure 1 in Plate 1 being a top view of the box with its cover swung back; Fig. 2, a vertical section in plane of line *ww*, Fig. 1, with box closed or shut; and in Plate 2, Fig. 3, a perspective view; Fig. 4, a top view showing sides folded or laid down upon the bottom plate of box, the cover being turned back; and Fig. 5, a vertical section in plane of line *xx*, Fig. 1, Plate 1, showing cover closed.

a a in the drawings represent the bottom plate of my improved box, made of a rectangular shape, and having attached to each of its four edges, by means of suitable hinges, *b*

b, &c., the four plates, *c d f g*, constituting the sides of the box, and made of any desired height, said plates being independent of each other. The rear side plate, *g*, of the box is cut out at *h* for a portion of its length and height, and the piece *k* attached thereto by a hinge, *l*, the part *k* being hung upon two parallel stationary rods, *m m*, fastened to the under side of the box-cover *n*, and extending a short distance across the width of the same. (See Fig. 1.)

At the upper edge of each end piece, *d* and *f*, of the box, turning in proper guides of the same, and extending across their entire length, are fastening wire rods *o o*, provided with suitable-shaped handles, the ends of which rods engage and interlock with proper-shaped hooks *p p*, &c., at and upon the adjoining side pieces, *c* and *g*, when the pieces are to be fastened together, as will be presently described.

Under the bottom plate, *a a*, of the box, and sliding upon proper guides, *q q*, thereof is a drawer or box, *r*, in which is fitted a flask, *s*, suitable for the carrying of coffee or any other desired liquid.

When the box is to be used for the carrying of food, its four side plates, *c*, *d*, *f*, and *g*, are made fast to each other through the locking-wire rods *o o*, and the box is in the shape seen in Figs. 1, 2, and 5, of the drawing; and the cover *n* is then closed upon the same, turning in unison with the piece *k*, upon the hinge *l*, connecting it with the rear side of the box.

The box is nearly as firm, strong, secure, and stiff when fastened as above described as it would be were its parts all soldered or fastened in any other similar manner together at their joints.

When the box has been emptied of its contents, its sides are first unfastened or loosened from each other by withdrawing the rods *o o*, and then turned upon their respective hinges, *b b*, &c., and laid down upon the bottom plate of the box, the two end pieces, *d* and *f*, first, and over them the front piece, *c*, as seen in Fig. 4, and, finally, the rear plate, *g*, moving upon the guide-rods *m m* of the cover as it is swung down, thereby bringing the rear portion of the cover against the back edge of the bottom plate, when the cover is then entirely closed over the whole, greatly reducing the box in thickness, as seen in Fig. 3, and thus

rendering it very convenient for being carried from place to place.

The box may be made of tin, sheet-copper, brass, or any other suitable metal or other material, and of various shapes and sizes; and, further, the folding box can be made and used without the flask-drawer, as described; and there are many other modifications which might be made in the detail, arrangement, and construction of the box without departing from the principles of the present invention.

I claim as new, and desire to secure by Letters Patent, as an improved article of manufacture—

A folding box made substantially as herein shown and described, either with or without a bottom receptacle.

JOHN F. MORGAN.

Witnesses:

M. H. DURGIN,
THOMAS M. HOWARD.