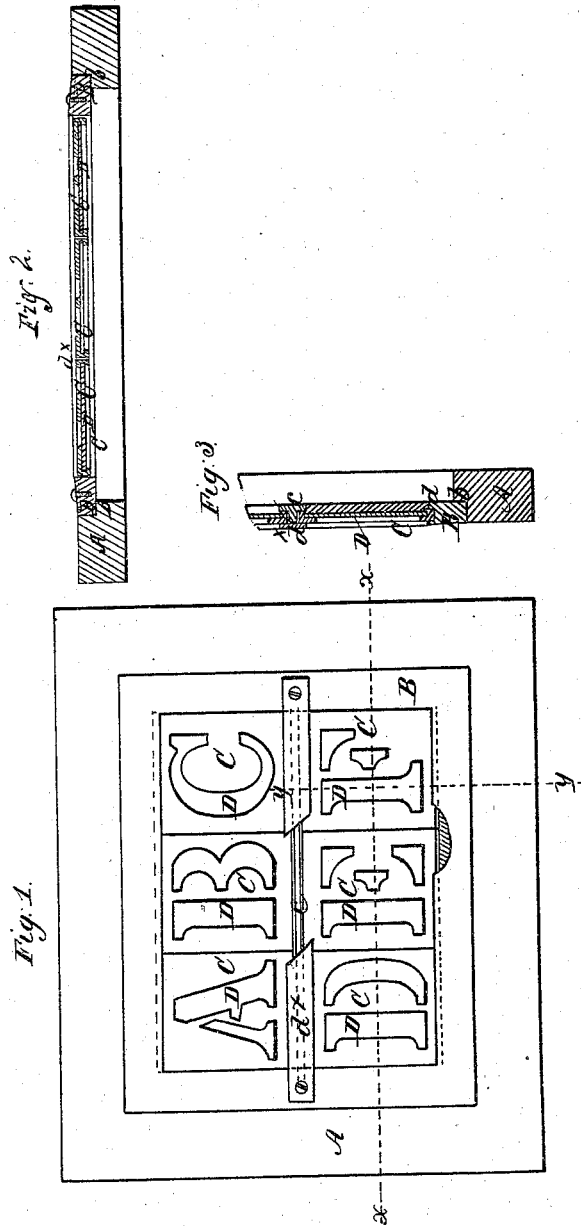


J. L. Tarbox.

Sign.

N<sup>o</sup> 47,669.

Patented May 9, 1865.



Witnesses  
James P. Hall.  
Elias T. C. H.

Inventor,  
J. L. Tarbox

# UNITED STATES PATENT OFFICE.

J. L. TARBOX, OF NEW ORLEANS, LOUISIANA.

## ILLUMINATED SIGN.

Specification forming part of Letters Patent No. 47,669, dated May 9, 1865.

*To all whom it may concern:*

Be it known that I, J. L. TARBOX, of New Orleans, in the parish of Orleans and State of Louisiana, have invented a new and Improved Illuminated Sign; and I do hereby declare that the following is a full, clear, and exact description thereof, which will enable others skilled in the art to make and use the same, reference being had to the accompanying drawings, forming part of this specification, in which—

Figure 1 is a face view of my invention; Fig. 2, a section of the same, taken in the line *xx*, Fig. 1; Fig. 3, a section of a portion of the same, taken in the line *yy*, Fig. 1.

Similar letters of reference indicate like parts.

The object of this invention is to obtain a changeable sign with transparent letters, so constructed and arranged that it may be inserted in a sidewalk flush with the pavement or upper surface thereof, and be sufficiently strong to sustain the weight of persons passing over it, and admit of having a light placed under it to render the letters visible during the night.

A represents a portion of a sidewalk having a square or other shaped hole made in it, provided with a shoulder, *b*, all around to sustain a metallic frame, B, the upper surface of which is flush with A. This hole to receive the frame B is made in the flag, brick, or other material with which the sidewalk is paved, and the frame B has one or more cross-bars, *c*. One is represented in the drawings. This cross-bar *c* is of T-shape in its transverse section, in order to form ledges for one end of the letter-plates C of the sign to rest upon, the opposite ends being fitted in grooves *d* in the

inner sides of the frame B, as shown clearly in Fig. 3.

The letter-plates C are cast with open letters, the openings being entirely through the plates, and resembling stencil plate letters. The plates C are cast sufficiently heavy to support the weight of a person treading upon them, and they have grooves in lips at their under sides to admit of glass plates D being inserted underneath them. The glass plates D may be of any color desired, and different-colored glass plates may be used in the same sign.

The cross-bar *c* has a metal strip, *d*<sup>x</sup>, secured over its upper surface, said strip lapping over the edges of the letter-plates C, in order to retain them firmly in position.

I would remark that the cross bar *c* may be made adjustable, if desired, so that letter-plates of different sizes may be used in the same frame B. A light—candle, lamp, or gas-jet—is placed at night underneath the frame B, an excavation being made sufficient for that purpose.

The letters, it will be seen, may be removed from and inserted in the frame B with the greatest facility, and hence the sign may be changed as occasion may require.

I claim as new and desire to secure by Letters Patent—

The changeable illuminated sign herein described, consisting of a grooved or rabbeted frame, B, glass plates D, movable letter-plates C, and confining-strip *d*<sup>x</sup>, all constructed and employed as and for the purposes specified.

J. L. TARBOX.

Witnesses:

JAMES P. HALL,  
THEO. TUSCH.