

J. BROCKWAY.

Straw Cutter.

No. 48,649.

Patented July 11, 1865.

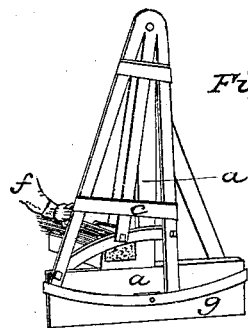


Fig. 4

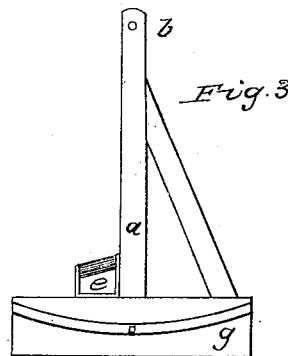


Fig. 3

Fig. 1

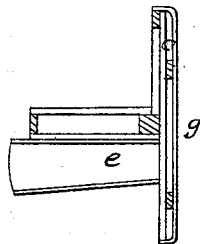


Fig. 5

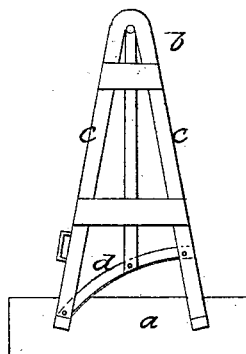
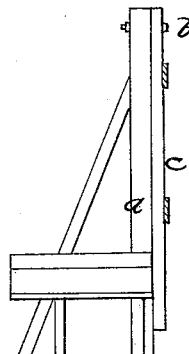


Fig. 2



WITNESSES  
*G. M. Smith*  
*Daniel McKim*

INVENTOR  
*Joseph Brockway*

# UNITED STATES PATENT OFFICE.

JOSEPH BROCKWAY, OF CAMBRIA, NEW YORK.

## IMPROVEMENT IN STRAW-CUTTERS.

Specification forming part of Letters Patent No. **48,649**, dated July 11, 1865.

*To all whom it may concern:*

Be it known that I, JOSEPH BROCKWAY, of Cambria, in the county of Niagara, in the State of New York, have invented new and useful Improvements for Cutting Straw, Hay, Stalks, &c.; and I do hereby declare that the following is a full and exact description thereof, reference being had to the accompanying drawings, and to the letters of reference marked thereon, which refer to the same parts in the various figures.

Figure 1 is a plan. Fig. 2 is a side elevation; Fig. 4, perspective view. Figs. 3 and 5 are front elevations.

The nature of my invention consists in attaching the cutting-knife to the lower end of a pendulum, so that the swing of the pendulum will bring the edge of the cutting-knife to cut the straw obliquely, or by a drawing stroke, as the knife passes the throat of the cutting-box in which the straw is placed. Further, the pendulum acts as a balance-wheel, giving force and momentum to the knife when in the act of cutting the straw, &c. It also admits of using a very simple knife, or a cradle-scythe can be used for a knife.

To enable others skilled in the art to make and use my invention, I will proceed to describe its construction and operation.

At *a* in Figs. 2, 3, 4, and 5 is an upright frame, to which the pendulum is hung at its up-

per end, at *b*; or the pendulum may be hung to an upright post in a beam or to the side of any building, which may be preferable when made on a large scale and used as a stationary machine.

In Figs. 2, 4, and 5, at *c*, is seen the pendulum, or a triangular frame, hung by a pin at *b* to the frame, (at its upper end,) with the cutting-knife *d* attached to the lower portion of the triangular pendulum-frame, so that in pushing by the hand *f* in Fig. 4 the said cutting-knife is made to pass obliquely by the box *E* in Figs. 3 and 4, which contains the straw to be cut. The knife is then drawn back by the hand, as seen at *f* in Fig. 4, and is ready for another cut.

Fig. 1 is a ground plan, showing the straw-hopper *E*, also the triangular frame *c*, colored green. Outside of this is a bar of iron or wood, colored red, as seen in Figs. 1, 3, and 4, (marked *g*), within which the pendulum slides, and is kept by said bar *g* close to the frame *a*, to secure a close cut of the knife to the box *E*.

What I claim as my invention, and desire to secure by Letters Patent, is—

The attaching the knife to the lower part of a pendulum or swinging frame, for the purposes as herein set forth.

JOSEPH BROCKWAY.

Witnesses:

G. W. HILDRETH,  
DANIEL McKIM.