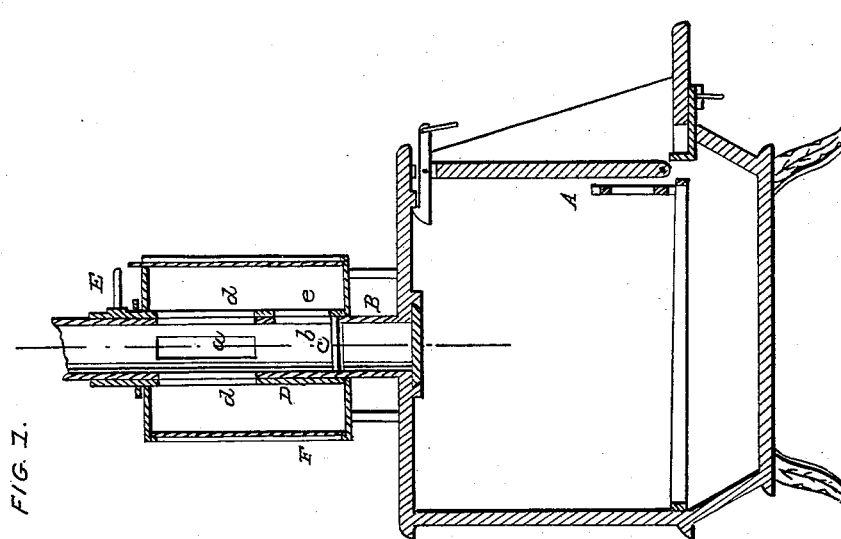
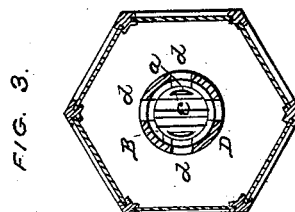
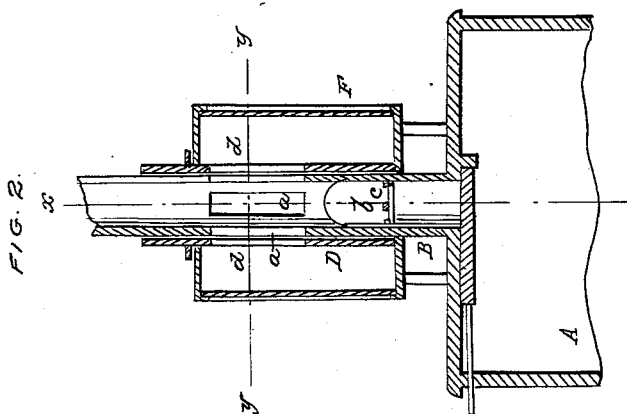


C. B. GUY.  
Combined Lamp and Stove.

No. 48,678.

Patented July 11, 1865.



WITNESSES:

Wm. Orum  
Ed. L. Gifford

INVENTOR.

C. B. Guy.  
per mmm/H  
atp

# UNITED STATES PATENT OFFICE.

C. B. GUY, OF LYBRAND, IOWA.

## COMBINED LAMP AND STOVE.

Specification forming part of Letters Patent No. **48,678**, dated July 11, 1865.

*To all whom it may concern:*

Be it known that I, C. B. GUY, of Lybrand, in the county of Allamakee and State of Iowa, have invented a new and Improved Combined Stove and Lamp; and I do hereby declare that the following is a full, clear, and exact description thereof, which will enable others skilled in the art to make and use the same, reference being had to the accompanying drawings, forming part of this specification, in which—

Figure 1 is a vertical section of my invention, taken in the line *x x*, Fig. 2. Fig. 2 is a vertical section of the upper part of the same, taken in the line *y y*, Fig. 1. Fig. 3 is a horizontal section of the same, taken in the line *z z*, Fig. 2.

Similar letters of reference indicate like parts.

This invention consists in combining a lamp with a stove in such a manner that the smoke and offensive odor emitted from the lamp will be carried off by the pipe of the stove.

The invention is more especially designed for sick-rooms, as the odor from lamps is not only very disagreeable, but also injurious to persons in ill health.

A represents a stove, which may be constructed in any of the known forms for burning either coal or wood.

B is the stove-pipe, which is a short distance above the top of the stove, and has a series of oblong vertical slots, *a*, made in it, and an opening, *b*, is made in the pipe a short distance below the slots to admit a lamp, which may be construct-

ed for burning lard-oil or other material, a grating, *c*, being in the pipe to hold the lamp.

On the stove-pipe B, around the portion in which the slots *a* and opening *b* are made, there is placed a collar or section of pipe, D, which has a series of slots, *d*, made in it, and also an opening, *e*, said slots and opening corresponding to those in the stove-pipe B. The pipe D is provided with a handle, E, and it is allowed to turn freely on the pipe, and it serves as a register therefor, to admit of the light from the lamp being shut off from the room when desired. The pipe D is encompassed by a glazed frame, F, which admits of the rays of light being thrown into the room and at the same time prevents the smoke or odor from the lamp escaping into the latter, said frame inclosing the slots and openings in the pipes B D, as shown in Figs. 1 and 2.

This invention may be applied to any stove at a trifling expense.

I claim as new and desire to secure by Letters Patent—

A lamp combined with a stove and register, in the manner substantially as herein shown and described, so that the smoke and odor emitted from the lamp may be carried off by the stove-pipe and the rays of light admitted into the apartment or shut off from the same when desired, substantially as set forth.

C. B. GUY.

Witnesses:

NATHAN CLOUGH,  
SIMEON HURD.