

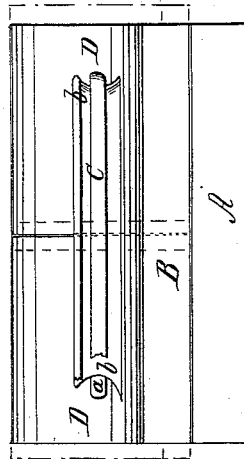
*B. T. Milburn.*

*Railroad Chair.*

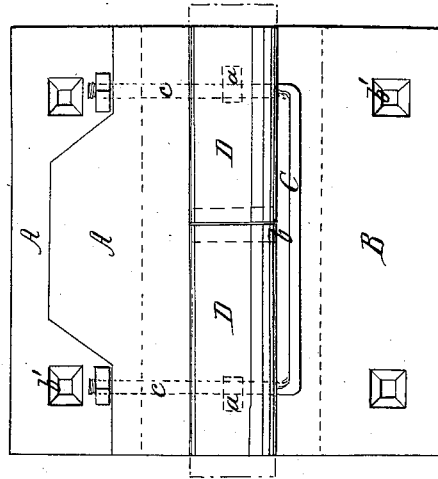
*Nº 48,873.*

*Patented Jul. 18, 1865.*

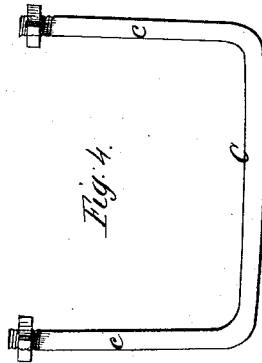
*Fig. 3.*



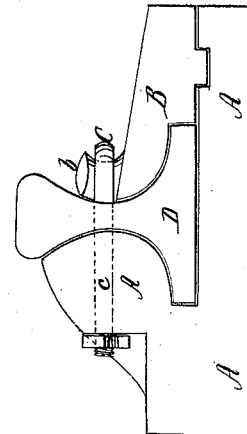
*Fig. 1.*



*Fig. 4.*



*Fig. 2.*



*Witnesses;*

*O. Hase*  
*Geo. Johnson*

*Inventor;*

*Benjamin T. Milburn*

*by his attorney*

*S. S. Farnsworth*

# UNITED STATES PATENT OFFICE.

BENJN. T. MILBURN, OF WILMINGTON, ASSIGNOR TO HIMSELF AND JOS. RIGLY, OF BRANDYWINE, DELAWARE.

## IMPROVEMENT IN RAILWAY-CHAIRS.

Specification forming part of Letters Patent No. 48,873, dated July 18, 1865.

*To all whom it may concern:*

Be it known that I, BENJAMIN T. MILBURN, of Wilmington, county of New Castle, and State of Delaware, have invented a new and Improved Railroad-Chair; and I do hereby declare that the following is a full and exact description thereof, reference being had to the accompanying drawings, and to the letters of reference marked thereon.

The nature of my invention consists in constructing a railroad-chair so as to readily and safely permit expansion and contraction of the rails resulting from changes of temperature; to which end it consists of several pieces, to be hereinafter more particularly described, and may be termed a "compound chair."

To enable others skilled in the art to make and use my invention, I will proceed to describe its construction and operation.

In the drawings, Figure 1 represents a top view of the chair, showing the rails in their most expanded condition. Fig. 2 shows an end view of the chair and portions of the rails lying upon it. Fig. 3 shows an inside view of the chair and sections of the rails, the latter when expanded; Fig. 4, the stirrup (detached) which holds the chair and rails together.

A represents the main portion of the chair, having a groove for the outside flange of the rail, and a projection which forms a support for the side and top. B is the other portion of the chair, covering the inside flange of the rail,

and having a projection, *b*, which is hugged by the stirrup C.

D D are portions of the rails.

The chair has spike-holes, which are seen in Fig. 1. (Marked *b'*.) Near the ends of the rails which come together slotted holes *a* are made in the center or upright portion, through which the arms *c c* of the stirrup pass. These arms pass through holes in the top part of A, and nuts on their ends serve to secure the rails and the two parts of the chair together.

The red lines in Figs. 1 and 3 show the rails when contracted. In Fig. 3 part of the stirrup is removed to show more plainly the slotted hole *a* in one of the rails, which permits the contraction or expansion of the same along the stirrup.

By unscrewing the nuts, removing the stirrup and part B of the chair the rails can easily be removed or replaced without disturbing the main portion A of the chair.

Having thus described my invention, what I desire to claim and secure by Letters Patent of the United States is—

The combination of the chair-pieces A and B, the stirrup C, and the rails D D, constructed and operating substantially as described, for the purpose set forth.

BENJA. T. MILBURN.

Witnesses:

S. S. FAHNESTOCK,  
JOHN S. HOLLINGSHEAD.