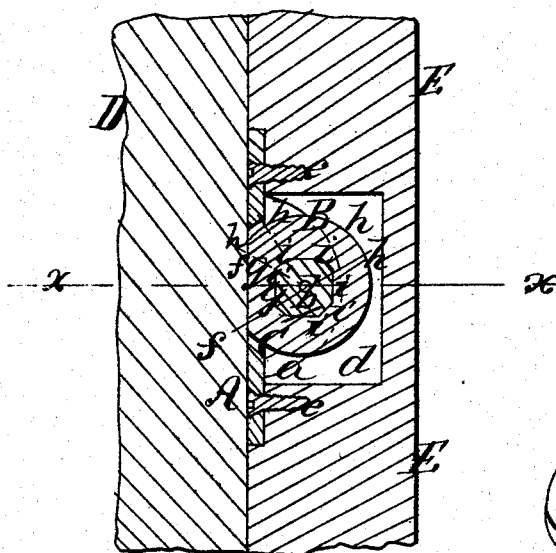


No. 49,442.

PATENTED AUG. 15, 1865.

A. M. SAWYER.  
SASH SUPPORTER.

*Fig: 1.*



*Fig: 2.*

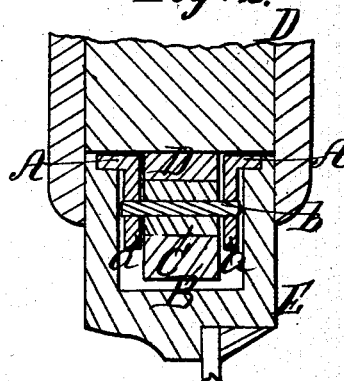


Fig: 3.

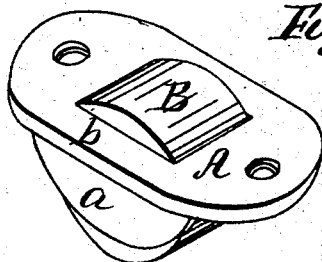
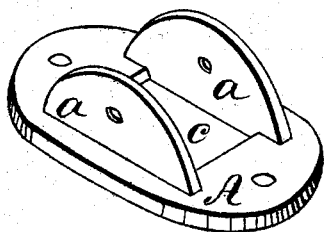
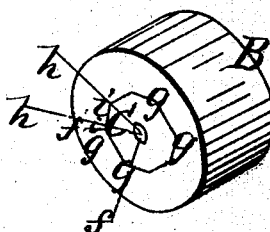


Fig: 4.



*Fig:5.*



Witnesses:

Calvin Keltner  
Valetto, W. Leachy

*Inventor;*

Addison M Sawyer

# UNITED STATES PATENT OFFICE.

ADDISON M. SAWYER, OF ATHOL, MASSACHUSETTS.

## SASH-SUPPORTER.

Specification forming part of Letters Patent No. 49,442, dated August 15, 1865.

*To all whom it may concern:*

Be it known that I, ADDISON M. SAWYER, of Athol, in the county of Worcester and State of Massachusetts, have invented a new and Improved Stop for Supporting Window Sashes, Blinds, &c., of which the following is a full, clear, and exact description, reference being had to the accompanying drawings, making part of this specification, in which—

Figure 1 is a central vertical section through a portion of a window-frame and its sash with my improved stop applied thereto. Fig. 2 is a transverse section through the same on the line *xx* of Fig. 1. Fig. 3 is a view of my improved stop. Figs. 4 and 5 are detail views of the same.

The object of my invention is to produce a simple and reliable means of supporting window sashes and blinds at any desired point; and my invention consists in a stop composed of an elastic roll secured to an unyielding central block of an irregular form, so that the roll may yield more at one point than at another, one or more of these stops being attached to each side of the sash or window-frame, or both, whereby the sash is retained at any desired point on removing the hand therefrom.

To enable others skilled in the art to understand and use my invention, I will proceed to describe the manner in which I have carried it out.

In the said drawings, A represents a metal plate formed with lugs or projections *a* on a pin or spindle, *b*, passing through which revolves an elastic roll, B, a portion of which projects through a slot, *c*, in the plate A. (See Fig. 3.) The roll B is snugly fitted on a block or center, C, of metal or other unyielding material, whose form in cross-section is that of a polygon having its alternate sides of unequal length, as seen in Figs. 1 and 5.

D is the window-frame, in which slides the

sash E, provided with a mortise, *d*, for the reception of the stop, the plate A being secured in place by screws *e*. One or more of these stops may be attached to each side of the sash or window-frame; but I prefer, however, to place them upon the sash. When the sash is raised to the desired height it is retained in place by the friction of the flattened side of the roll B against the side of the window-frame D, and the friction of the roll acts in a similar manner upon the sash when the roll is attached to the window-frame.

The form of the unyielding central block, C, is such that the portion *ff* of the elastic material opposite the longer sides *g g* is thicker, and consequently may be compressed more at this point, the greater radius of block C at *i i* producing greater resistance on the portion *h h* of the roll opposite to the shorter sides *i i*, which is more than sufficient to counteract the tendency of the sash to descend by its own weight and revolve the roll B, this resistance being, however, readily overcome and the roll caused to revolve when pressure is applied to raise or lower the sash.

The metal block C may be of an irregular form other than that here shown, such as that of an ellipse in cross-section.

A window-stop constructed as above described is simple, cheap, and durable, and may be easily applied.

What I claim as my invention, and desire to secure by Letters Patent, is—

A window-sash stop or supporter consisting of an elastic roll containing an unyielding block or center of an irregular form in cross-section, substantially as described, the said roll revolving in suitable bearings, as set forth.

ADDISON M. SAWYER.

Witnesses:

CALVIN KELTON,  
VALETTE W. LEACH.