

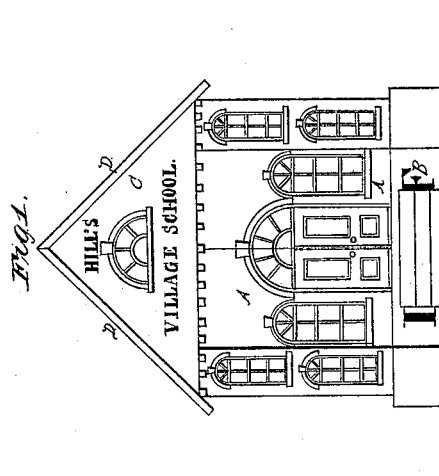
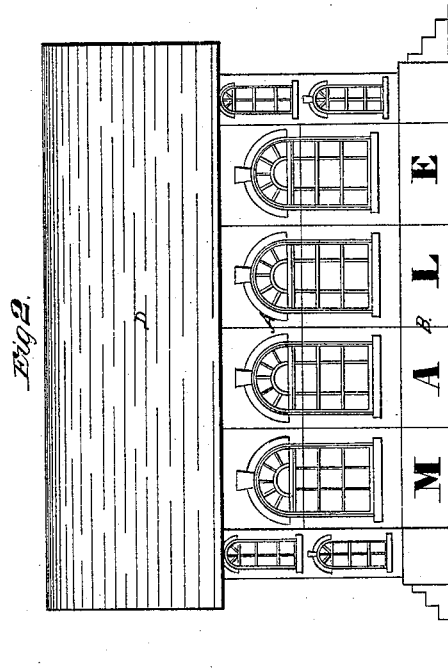
Sheet 1-2 Sheets.

S. L. Hill,

Toy Building Blocks,

No. 51,720,

Patented Dec. 26, 1865.



Witnesses,

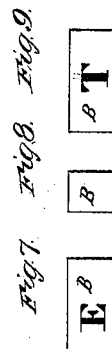
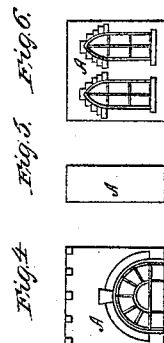
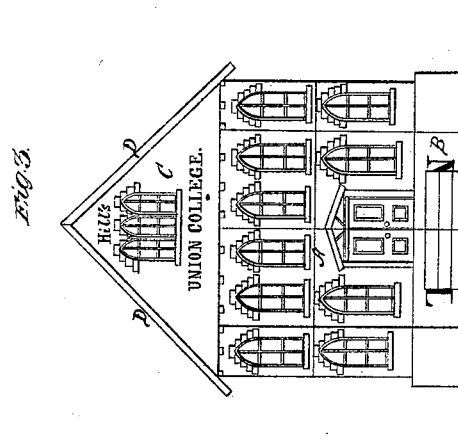
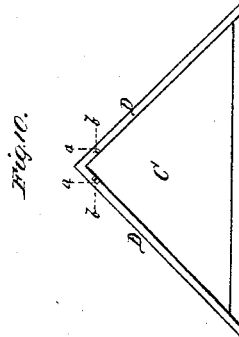
W. de Livingston
W. Haupt.

Inventor.

S. L. Hill.

S.L. Hill,

Toy Building Blocks,
No 51,720, Patented Dec. 26, 1865.



Witnesses.

M. M. Livingston.
W. Haufler.

Inventor.

S. L. Hill.

UNITED STATES PATENT OFFICE.

S. L. HILL, OF WILLIAMSBURG, NEW YORK.

TOY BLOCKS. .

Specification forming part of Letters Patent No. 51,720, dated December 26, 1865.

To all whom it may concern:

Be it known that I, S. L. HILL, of Williamsburg, in the county of Kings and State of New York, have invented a new and Improved Building-Block; and I do hereby declare that the following is a full, clear, and exact description thereof, which will enable others skilled in the art to make and use the same, reference being had to the accompanying drawings, forming part of this specification, in which—

Figure 1 represents an end view of the "village school" built up by means of my blocks. Fig. 2 is a side elevation of the same. Fig. 3 is an end view of the "union college" built up by means of my blocks. Figs. 4 to 9 are detached views of the several blocks. Fig. 10 is a transverse vertical section of the roof.

Similar letters of reference indicate like parts.

This invention consists in the employment or use of a series of building-blocks, which are marked on one side with parts of the outside of one and on the opposite side with parts of the surface of another building, in such a manner that by turning the corresponding sides of all the blocks out and placing them together in the proper order two different buildings can be produced by the same series of blocks.

In order to facilitate the operation of putting up the two buildings, the two sides of the blocks may be distinguished by different colors. The roof is composed of two triangular pieces and two boards, which latter are held in their places by horizontal grooves catching over dowels which project from the edges of triangular pieces, so that when said boards are put on they can be readily adjusted longitudinally without sliding off.

A represents a series of building-blocks, one of which is shown detached in Figs. 4, 5, and 6. Fig. 4 shows one and Fig. 6 the other side of the same block, and Fig. 5 is a transverse section of the same. Its two sides are marked with parts of the surface of different buildings, and they may be distinguished by different colors. All the blocks are marked in the same manner, with parts of the surface of one building on one and with parts of another building on the other side, and by turning the corresponding sides of the blocks out and placing them in the proper order a vil-

lage school can be built, as shown in Figs. 1 and 2, or by turning the opposite side of the blocks out and putting them together in the requisite order the union college, Fig. 3, is produced.

The foundation-blocks B (shown detached in Figs. 7, 8, and 9) are marked on the opposite sides with different letters of the alphabet, showing that all schools and colleges are based on the alphabet. If desired, those blocks may be left blank, or they may also be marked with parts of the surface of the buildings—for instance, with basement-windows.

The roof is composed of two triangular pieces, C, which are placed with their bases on the end walls, and from the inclined edge of which project two dowels, *a a*, one on either side, which catch into horizontal grooves *b* cut in the under surface of the boards D. These boards finish the roof, and their surface may be flat or molded, to imitate a tile, slate, or shingle roof, as may be desired. By means of the grooves *b* these boards, after having been put on, can be readily adjusted in a horizontal direction until they are in the proper position in relation to the building.

If it is desired, the several sides might be marked with the same parts of the surface of a building and distinguished by different colors, and in this case different buildings of the same appearance might be produced with the blocks distinguished only by their color.

I claim as new and desire to secure by Letters Patent—

1. The employment or use of a series of building-blocks marked on different sides with the parts of the surface of different buildings, substantially as and for the purpose described.

2. The longitudinal grooves *b* in the boards D, to operate in combination with the dowels *a* in the edges of the triangular pieces C, substantially as and for the purpose set forth.

3. The use of building-blocks having marked on their different sides parts of the same or of different buildings, the various sides being distinguished by different colors, substantially as and for the purpose described.

S. L. HILL,

Witnesses:

W. HAUFF,

M. M. LIVINGSTON.