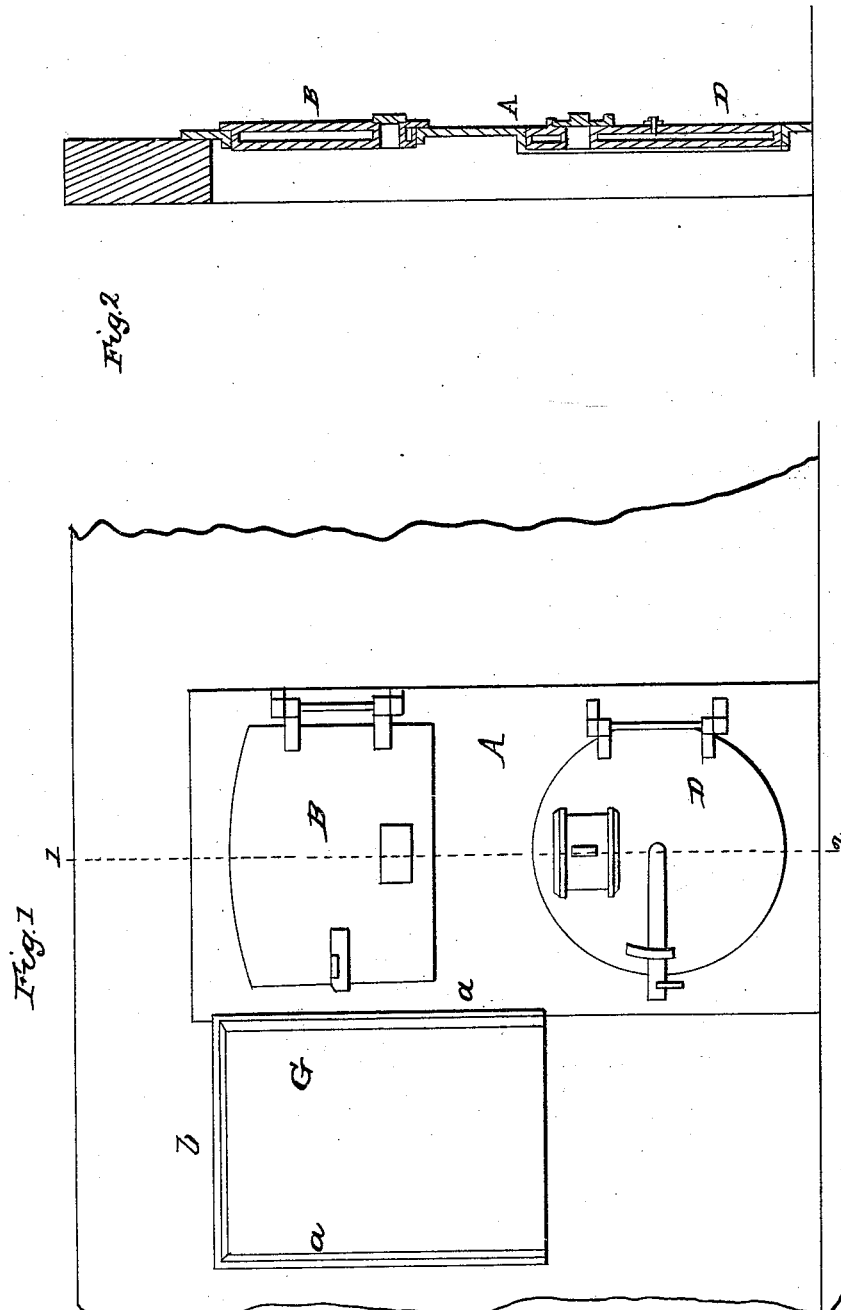


J. REYNOLDS.

Dust Screen for Stove and Furnace Doors.

No. 52,604.

Patented Feb. 13, 1866.



WITNESSES
Wm. Albert Steel
Charles C. Foster

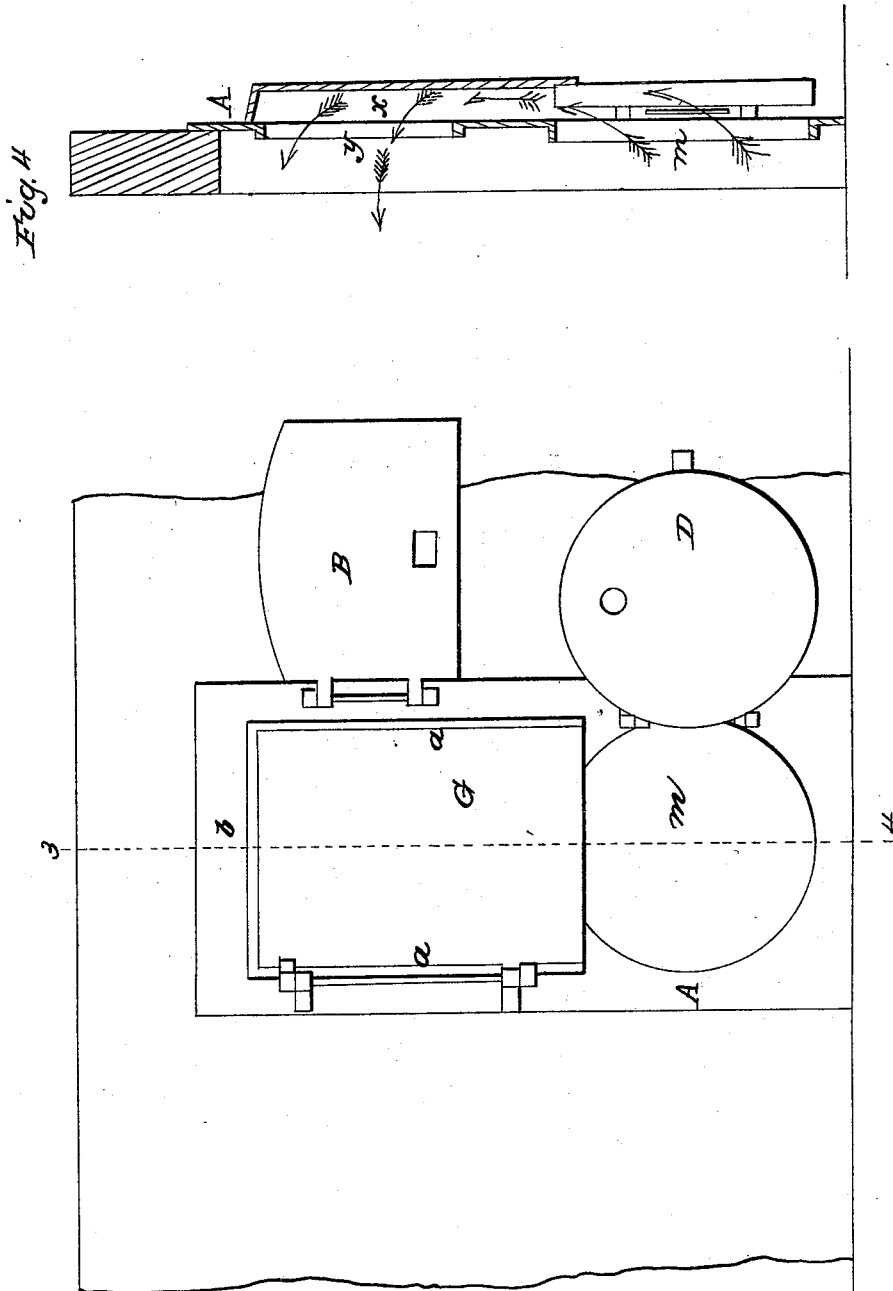
INVENTOR
J. Reynolds
By J. H. Howson

J. REYNOLDS.

Dust Screen for Stove and Furnace Doors.

No. 52,604.

Patented Feb. 13, 1866.



WITNESSES
Wm. Albert Steel
Charles E. Foster

INVENTOR
J. Reynolds
By His Atty
H. Howson

UNITED STATES PATENT OFFICE.

JESSE REYNOLDS, OF PHILADELPHIA, PENNSYLVANIA.

DUST-SCREEN FOR STOVE AND FURNACE DOORS.

Specification forming part of Letters Patent No. 52,604, dated February 13, 1866.

To all whom it may concern:

Be it known that I, JESSE REYNOLDS, of Philadelphia, Pennsylvania, have invented an Improvement in Heaters, Stoves, &c.; and I do hereby declare the following to be a full, clear, and exact description of the same, reference being had to the accompanying drawings, and to the letters of reference marked thereon.

My invention consists of a dust-screen constructed and adapted to a heater, furnace, or stove, substantially as described hereinafter, so that on raking the grate the said screen will form a flue through which the dust and fine ashes which would otherwise be disseminated throughout the apartment will be directed into the fire-place and flues leading therefrom.

In order to enable others to make and apply my invention, I will now proceed to describe its construction and operation.

On reference to the accompanying drawings, which form a part of this specification, Figure 1 is a front view of part of a heater, furnace, or stove with the doors closed and dust-screen thrown back; Fig. 2, a vertical section on the line 1 2, Fig. 1; Fig. 3, a front view of the heater or furnace with the doors open and the dust-screen applied; and Fig. 4, a vertical section on the line 3 4, Fig. 3.

Similar letters refer to similar parts throughout the several views.

A represents the front plate of a heater, furnace, or stove, to which is hung the usual door B, for closing or exposing the opening *y*, for the admission of fuel to the fire-place above the grate, D being the ash-pit door. Adjacent to the door B is hung the dust-screen G, which has at its opposite vertical edges flanges *a a*, and on its upper edge a similar flange, *b*, but no flange at its lower edge. The screen is of such dimensions and is so situated that when folded against the front of the heater or stove it will entirely cover the opening *y*, Fig. 4, of the fire-place, and will extend over the upper edge of the ash-pit opening *m*. As the flanges bear against the face of the heater or stove a chamber, *x*, Fig. 4, is formed by the screen, and this chamber is open below and communicates with the opening *y* of the fire-place.

It is well known that the raking of the fire of a heater, furnace, or stove is attended with the disagreeable discharge of dust and fine particles of ashes, which are dispersed throughout the apartment in which the heater or stove is situated—an annoyance obviated by the use of my invention.

When it becomes desirable to rake the fire and clear the grate both the fire-place door B and ash-pit door D are opened and moved back against the front of the heater or stove, as seen in Fig. 3, and the screen G is turned so as to occupy a position in front of the opening *y* of the fire-place. The screen, when moved to this position, forms a flue through which there must necessarily pass a plentiful supply of air to the fire-place, so that on raking the fire from below the dust and fine particles of ashes, which would otherwise be disseminated throughout the apartment, must of necessity rush in the direction pointed out by the arrows to the fire-place and flues leading therefrom.

It will be evident that this dust-screen G may be hung to the front of the heater or stove in a manner different from that described. It may, for instance, be hinged at the upper edge, or it may be entirely detachable from the heater or stove and provided with such appliances as to be readily affixed thereto for temporary use. I therefore do not desire to confine myself to the precise mode herein described of constructing the dust-screen or of applying the same to a heater or stove; but

I claim as my invention and desire to secure by Letters Patent—

The dust-screen G, constructed and adapted to a furnace, heater, or stove, substantially as and for the purpose herein set forth.

In testimony whereof I have signed my name to this specification in the presence of two subscribing witnesses.

JESSE REYNOLDS.

Witnesses:

C. B. PRICE,
JOHN WHITE.