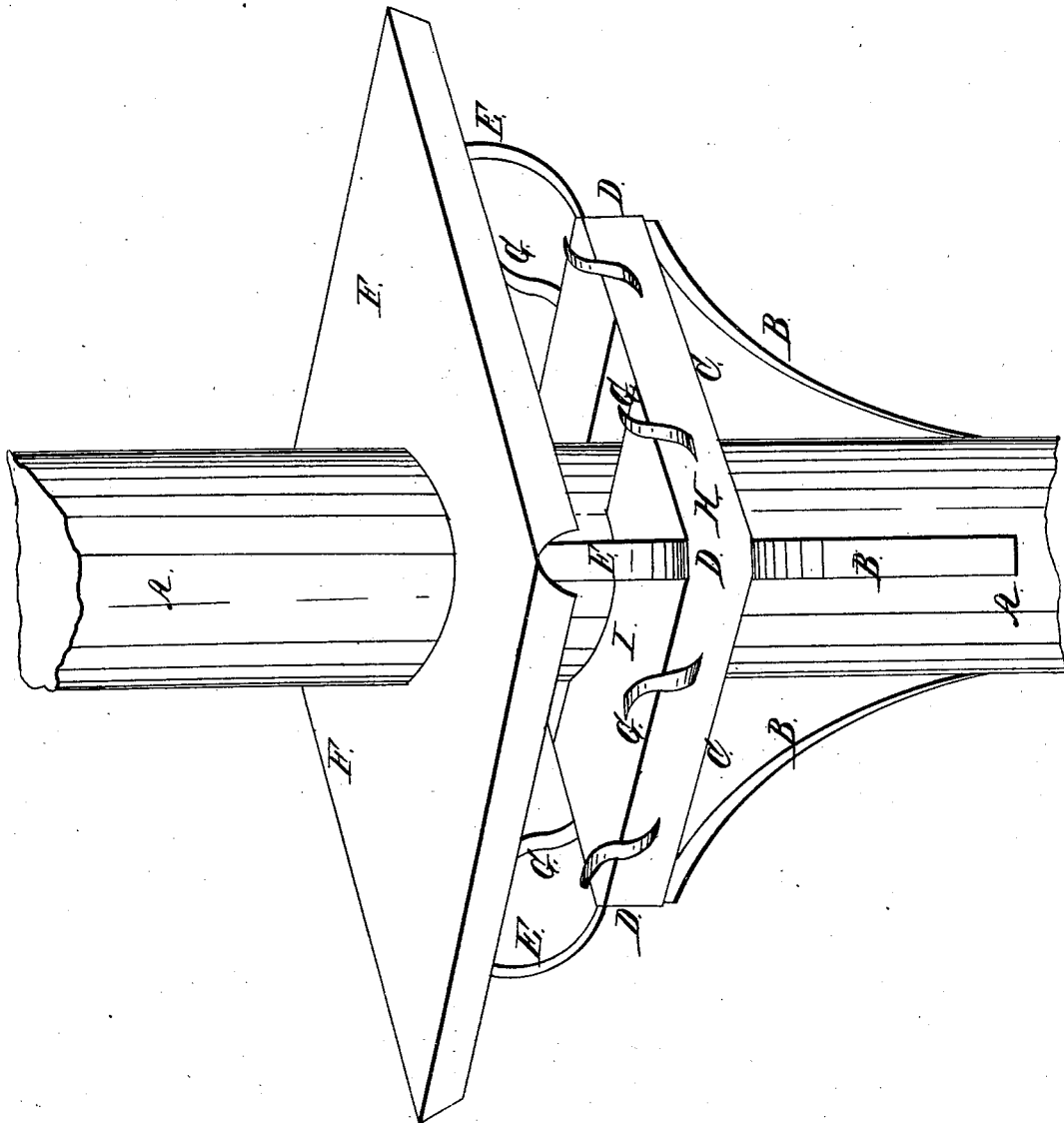


J. Gulliford,

Stovepipe Shelf.

N^o 53441.

Patented Mar 27, 1866.



Witnesses;
W. H. Sumner
Frank Alden

Inventor;
John Gulliford.

UNITED STATES PATENT OFFICE.

JOHN GULLIFORD, OF GIRARD, PENNSYLVANIA.

IMPROVED RACK AND STOVE-SHELF.

Specification forming part of Letters Patent No. 53,441, dated March 27, 1866.

To all whom it may concern:

Be it known that I, JOHN GULLIFORD, of Girard, in the county of Erie and State of Pennsylvania, have invented certain new and useful Improvements in a Combined Rack and Stove-Shelf; and I do hereby declare that the following is a full and complete description of the construction of the same, reference being had to the accompanying drawing, making a part of this specification, in which the drawing is a perspective view of the combined rack and stove-shelf, which is constructed and arranged as hereinafter described.

A represents a section or joint of a stove-pipe, the lower end of which is arranged so as to be directly connected with the pipe-hole of the stove. To the said pipe I attach four brackets, more or less, as required. Three of the brackets are shown at B, the lower ends of which are secured to the pipe, and which extend up and are fastened to the rack-frame C at the corners D, and from which corners spring a bracket, E. This bracket may be a continuation of the bracket B or separate from it.

The table or shelf F, through which the pipe passes, is supported by it and the brackets E, the latter being fastened to the under side of the shelf. Thus, by means of the brackets and pipe, it is firmly held in place.

To the frame C are fastened a series of hooks, G, together forming a rack, H, and to the same frame is attached the shelf I, which may be of the same size as the frame, or less, as shown.

The pipe A passes through this lower shelf,

the same as the upper one, and is held as securely in place by the means described.

In case it is not convenient to attach this improvement to the first joint connecting with the stove, it can be with any upper section of the pipe, so as to be convenient for use.

My improvement is found to be of much practical utility and convenience when applied to cooking stoves, for, by means of the rack or hooks, holders, covers, stove-covers, lifters, large spoons, ladles, &c., may be hung up so as to be within reach of the cook at all times, and by use of the shelves dishes of food, bread, dough, plates, &c., may be held preparatory for cooking and kept warm for use after being cooked.

The shelves and rack are sufficiently far from the stove as not to permit the articles placed thereon to become too hot for constant handling.

The general form or configuration of the described improvements admits of change without altering the nature of the invention.

What I claim as my improvement, and desire to secure by Letters Patent, is—

The rack-frame H and brackets B E, in combination with the shelves H F and pipe A, arranged as and for the purpose substantially as set forth.

JOHN GULLIFORD.

Witnesses:

W. H. BURRIDGE,
J. HOLMES.