

J. H. Fletcher

Bed Bottom,

No. 54,879,

Patented May 22, 1866.

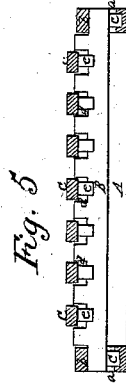
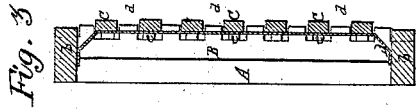


Fig. 1

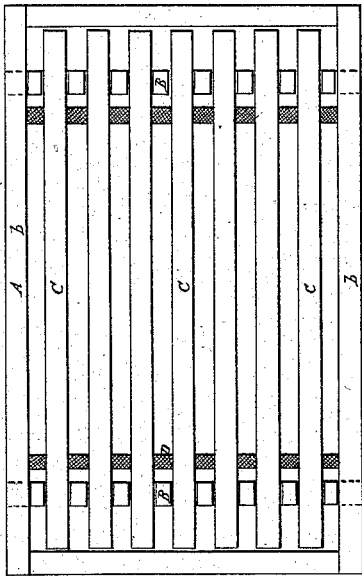
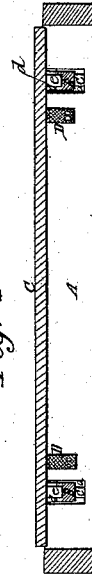


Fig. 2



Fig. 4



Witnesses:

Samuel N. Piper.
George Andrews.

Inventor:
James H. Fletcher.

by his attorney
R. H. Hardy

UNITED STATES PATENT OFFICE.

JAMES H. FLETCHER, OF LOWELL, MASSACHUSETTS.

IMPROVED BED-BOTTOM.

Specification forming part of Letters Patent No. 54,879, dated May 22, 1866.

To all whom it may concern:

Be it known that I, JAMES H. FLETCHER, of Lowell, in the county of Middlesex and State of Massachusetts, have invented an Improved Bed-Foundation; and I do hereby declare the same to be fully described in the following specification, and represented in the accompanying drawings, of which—

Figure 1 is a top view; Fig. 2, a side elevation of it. Fig. 3 is a transverse section, and Fig. 4 a longitudinal section taken through its middle. Fig. 5 is a transverse section taken through one of its cross-bars, and the springs for supporting it and the slats.

In the drawings, A denotes a rectangular frame provided with two cross-bars, B B, arranged within it. Each of such bars at its two ends extends into mortises *a a*, made in the side bars, *b b*, of the frame. Furthermore, each of the said bars B B not only rests at or near its opposite ends in two springs or blocks, *c c*, of india-rubber placed on the bottoms of the said mortises, but is provided with a series of vertical notches, *d d d*, made down in it from its upper surface, such notches being at equal distances asunder, and for the reception of a series of spring-slats, C C C, arranged within and lengthwise of the frame A. In

every one of the notches of each of the bars B B is a spring or block, *e*, of india-rubber, on which the slat placed in such notch rests.

The several slats are connected by flexible bands D D, which extend across the frame A, are affixed to its two side bars and to each of the slats, and serve to prevent the slats from being displaced from the notches of the cross-bars.

The bed-foundation so made is simple in construction, efficient in operation, and easy to a person while on a bed or mattress supported by it.

I claim—

The said improved bed-foundation, or combination and arrangement of the frame A, with its mortises *a a a a* and india-rubber springs *c c c c*, the cross-bars B B, with their series of notches *d d d*, and the series of slats C C C, with their supporting springs *e e e*, or the same and the holding-bands D D, the whole being substantially in manner and for the purpose specified.

JAMES H. FLETCHER.

Witnesses:

G. H. WASHBURN,
R. H. EDDY.