

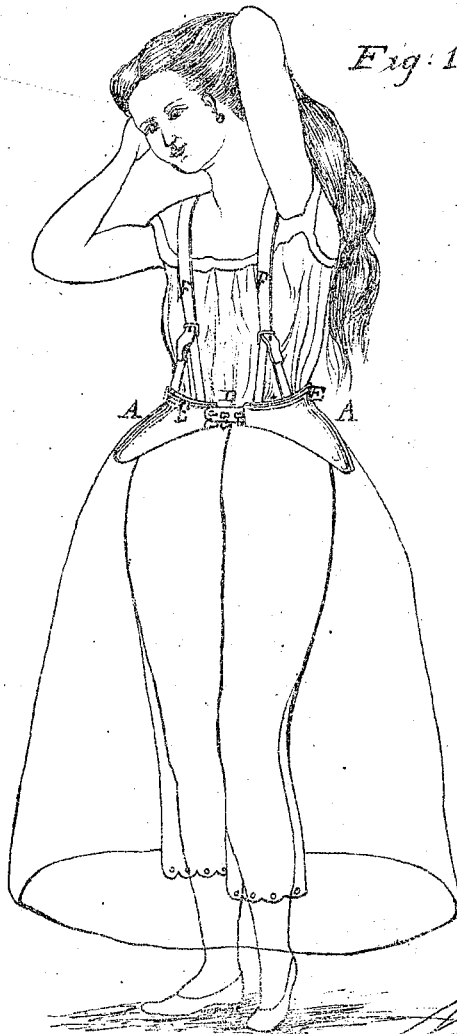
W. Bacheller.

Skirt Supporter.

N<sup>o</sup> 55196

Patented May 29, 1866.

Fig: 1.



Witnesses.

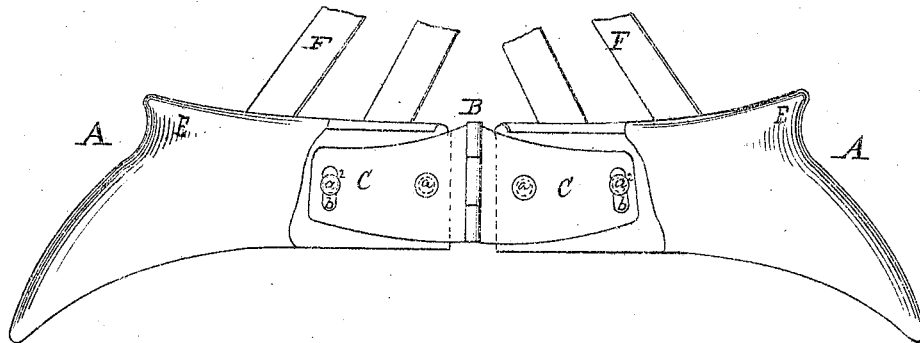
J. M. B. Livingston  
Wm. Frewin.

Inventor.

Wm. Bacheller

Fig: 2.

Per. Murray &  
Attys.



# UNITED STATES PATENT OFFICE.

WILLIAM BACHELLER, OF WEST NEWBURY, ASSIGNOR TO HIMSELF AND  
J. BRADBURY, OF CHARLESTOWN, MASSACHUSETTS.

## IMPROVEMENT IN SUPPORTERS FOR LADIES' SKIRTS.

Specification forming part of Letters Patent No. 55,196, dated May 29, 1866.

*To all whom it may concern:*

Be it known that I, WILLIAM BACHELLER, of West Newbury, in the county of Essex and State of Massachusetts, have invented a new and Improved Skirt-Supporter; and I do hereby declare that the following is a full, clear, and exact description thereof, which will enable others skilled in the art to make and use the same, reference being had to the accompanying drawings, forming a part of this specification.

The present invention relates to a skirt-supporter to be worn around and about the waist of a lady or miss, just above the hips, over which the skirts worn are placed and supported, and thus kept from bearing or resting upon the hips, the said supporter being so constructed as to accommodate itself to the movement of the hips as the person wearing it is walking.

In accompanying plate of drawings my improved skirt-supporter is illustrated, Figure 1 being a view of the supporter, showing it as applied to the waist of a person and Fig. 2 a detail view, to be hereinafter referred to.

Similar letters of reference indicate like parts.

The skirt supporter A embraced by the present invention is made of sheet metal of any suitable kind and thickness, and in two parts or sections, secured together at one end by a hinge, B, one wing C of the hinge being fastened to one section and the other C to the other section by means of two pins,  $a$   $a^2$ , for each wing, on one of which,  $a$ , in each case the hinge-wing swings as a fulcrum, guided by its slot  $b$ , extending in a vertical direction, through which the other pin,  $a^2$ , passes, as plainly shown in Fig. 2.

The supporter is molded into the proper shape to fit the form of the person who is to wear it, and each section or flap so bent as to be at a vertical inclination thereto, and to project sufficiently from the person to clear the hips above which it is placed around the waist, and the two sections then fastened together by means of a clasp, D, having a series of apertures,  $c$   $c$ , to enable it to be properly adjusted

and secured with the proper degree of tightness.

The upper portion, E, of each section of the skirt-supporter A is made slightly hollow or concave around the outside, about which the waistbands of the skirts worn are placed and fastened in the ordinary manner, the supporter when worn being suspended from the shoulders of the person by means of a suitable arrangement of straps F, as shown in Fig. 1, connected thereto in any proper manner.

The sheet metal constituting the supporter it is intended to cover with leather, cloth, or any other suitable material, which will prevent the corrosion of the metal by exposure to the atmospheric elements.

From the above description it is obvious that by making the supporter of sheet metal a firm and rigid support or holder for skirts is obtained, and also one susceptible of being fastened with considerable tightness about the waist without producing the least injury to the body or causing the slightest uncomfortable and uneasy feeling. And, furthermore, by forming the supporter in two parts or sections, attached together by a hinge, it can be readily placed upon or removed from the person, the peculiar manner of hanging or fastening each wing of the hinge to the sections allowing each section of the supporter to have a play or motion in a vertical direction corresponding to the movements of the hips of the person wearing the supporter when walking, the great importance of which is manifest.

Having thus described my invention, I claim as new and desire to secure by Letters Patent—

A skirt-supporter, A, made of sheet metal or other suitable material, and in two parts or sections, secured together by a hinge, having each of its wings or leaves fastened to the supporter-sections in such a manner as to allow a vertical play or motion thereto, substantially as herein described, and for the purpose specified.

WM. BACHELLER.

Witnesses:

JOHN Q. A. GRIFFIN,  
ALLEN ROWE, Jr.