

S.S. Nash,
Indexing.

No 107,089.

Patented, Sept. 6. 1870.

Fig. 1.

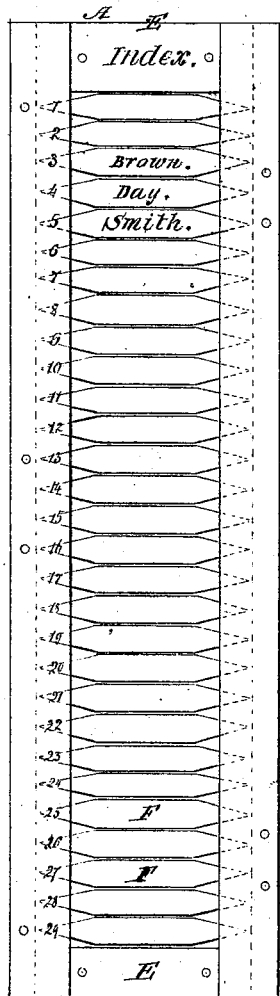
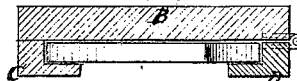


Fig. 2.



Witnesses:
S. S. Mabe
D. M. M. M.

Inventor:
S. S. Nash
PER *M. M. M. M.*
Attorneys.

United States Patent Office.

STEPHEN S. NASH, OF NEW YORK, N. Y.

Letters Patent No. 107,089, dated September 6, 1870.

IMPROVEMENT IN SCHOOL-REGISTERS.

The Schedule referred to in these Letters Patent and making part of the same

To all whom it may concern :

Be it known that I, STEPHEN S. NASH, of the city of New York, in the county and State of New York, have invented a new and improved Index; and I do hereby declare that the following is a full, clear, and exact description thereof, which will enable others skilled in the art to make and use the same, reference being had to the accompanying drawing forming part of this specification.

This invention relates to a new and useful index for schools, and other uses where it is desirable to keep a changeable record or index of the good or bad standing of scholars and the like.

The invention consists in a number of blocks or tablets of wood, paper, or other substance, having the names of scholars marked on them, or it may be numbers or other characters, which tablets are laid one upon another or side by side in a case, confining the ends by rails or bars, one of which is hinged, so as to be readily turned away from the tablets, to admit of taking them out and putting them in again, for changing the order of their arrangement.

Figure 1 is a front elevation of my improved index, and

Figure 2 is a transverse section of the same.

Similar letters of reference indicate corresponding parts.

A represents the case or tablet-holder, which, in this instance, consists of a plain band, B, a rebated strip or bar, C, permanently attached to one side, near one edge, a rebated strip, D, hinged to the band at the other edge, and the end pieces E, both the latter being permanently attached.

F represents the pieces of wood or other substance

on which the names of the scholars are written, or the numbers or other indicating characters which it may be desired to use, and which are to be changed relatively to each other from time to time.

These blocks are arranged side by side, as shown, and the ends extend under the projecting edges of the strips O D, so as to be confined by them, as shown.

To remove and change the blocks, the strip D is turned up on its hinges, so that they are exposed at one end, to be readily taken out by the fingers, and to facilitate this, they are tapered at the ends.

When one block is to be put in another place, the others are shoved along toward the place made vacant by taking it out, to make room for it in the place where it is to be put.

One or both the strips O D may be numbered, as shown, so that the position of each block relatively to the others may be readily seen.

These indexes are very useful in schools, to keep before all the scholars the standings of each one of a class, and are powerful stimulants to the scholars to strive for the best standing or record.

Having thus described my invention,

I claim as new and desire to secure by Letters Patent—

The improved index, consisting of the case A and blocks or tablets F, all combined and arranged substantially as specified.

The above specification of my invention signed by me this 31st day of May, 1870.

STEPHEN S. NASH.

Witnesses:

GEO. W. MABEE,
ALEX. F. ROBERTS.