

110798

R. S. STUBBS.
FOLDING
LETTER - SHEET.

PATENTED JAN 3 1871

Fig. 1.

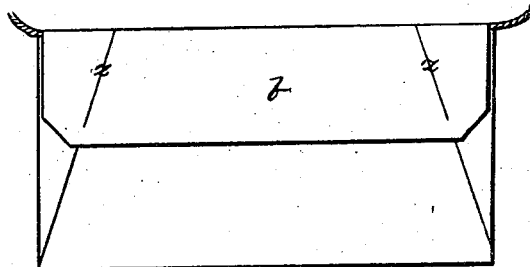
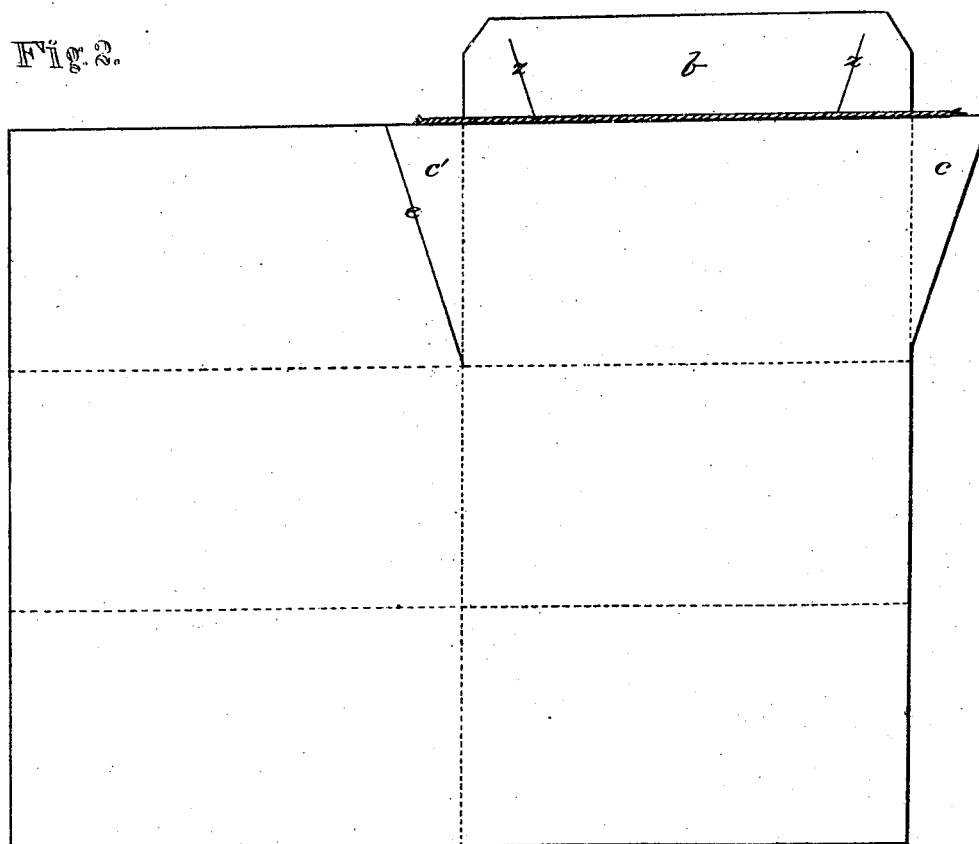


Fig. 2.



Witnesses.
Chas. H. York,
Edw. P. Main

Inventor.
R. S. Stubbs
Chipman & Son, & Co.
Attorneys,

United States Patent Office.

ROBERT SHERWOOD STUBBS, OF LISBON, NEW HAMPSHIRE.

Letters Patent No. 110,798, dated January 3, 1871.

IMPROVEMENT IN ENVELOPES.

The Schedule referred to in these Letters Patent and making part of the same.

To all whom it may concern:

Be it known that I, ROBERT SHERWOOD STUBBS, of Lisbon, in the county of Grafton and State of New Hampshire, have invented a new and valuable Improvement in Combined Envelope and Letter-Sheet; and I do hereby declare that the following is a full, clear, and exact description of the construction and operation of the same, reference being had to the annexed drawing making a part of this specification and to the letters and figures of reference marked thereon.

Figure 1 of the drawing is a representation of letter sealed.

Figure 2 is the letter open.

My invention has relation to an improvement in means for carrying on correspondence, especially of an extensive character; and

It consists in the construction and novel arrangement of a letter-sheet designed to serve at the same time as an envelope.

In the drawing—

Figure 1 represents the letter duly sealed, with the ends of the opener protruding from the upper corners thereof.

Figure 2 exhibits the letter-sheet displayed, showing its shape and the position of the cord or opener *a*, in the crease at the juncture of the flap *b* with the second leaf of the sheet.

c c represent angular flaps situated at each side of the second leaf of the sheet near the top.

One of these ears or flaps projects from the edge of the sheet, while the other is formed by cutting an

oblique slit, *e*, in the first leaf of the sheet near its juncture with the second.

With the exception of the flaps *b* and *c*, the letter-sheet is of the usual rectangular form.

The opener is usually gummed in position.

z z represent short oblique slits made in the flap *b*, and parallel in their direction, respectively, to the flaps *c* and *c'*.

When the letter is duly folded, the ends will be closed by the flaps *c c'*, and the top by the flap *b*. At the same time the slits *z z* will be brought by their arrangement in line with the upper portions of the oblique edges of the ears *c c'*, and consequently, when the juncture between the flap *b* and the letter-sheet is severed by pulling the cord, there being nothing to bind the ears *c c'* to the main portion of the sheet, the letter will be opened.

The gum should be placed around the edges of the flap *b*, none being needed on the ears *c c'*.

What I claim as my invention, and desire to secure by Letters Patent, is—

The letter-sheet herein described, provided with the flap *b*, slits *e z z*, and ears *c c'*, substantially as specified.

In testimony that I claim the above, I have hereunto subscribed my name in the presence of two witnesses.

ROBERT S. STUBBS.

Witnesses:

E. C. STEVENS,
MOSES KNIGHT.