

G. G. RICHMOND.

Stove Door.

No. 111,383.

Patented Jan. 31, 1871.

Fig. 1

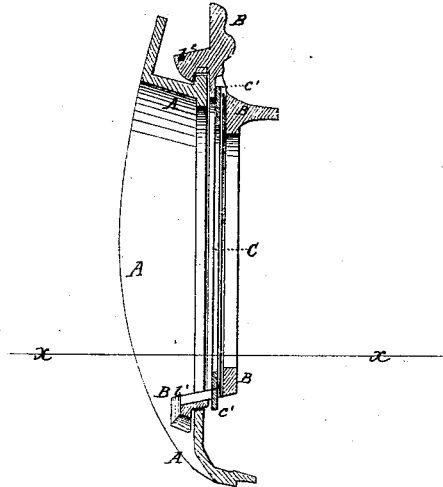
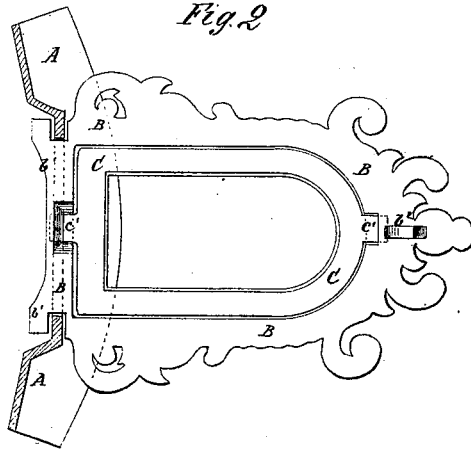


Fig. 2



Witnesses:

A. W. Almqvist

Paul Hockley

Inventor:

G. G. Richmond

PER

Wm. C. Munn
Attorneys.

United States Patent Office.

GEORGE G. RICHMOND, OF PEEKSKILL, NEW YORK.

Letters Patent No. 111,383, dated January 31, 1871.

IMPROVEMENT IN MICA-FRAMES FOR STOVES.

The Schedule referred to in these Letters Patent and making part of the same.

To all whom it may concern:

Be it known that I, GEORGE G. RICHMOND, of Peekskill, in the county of Westchester and State of New York, have invented a new and useful Improvement in Mica-Frames for Stoves; and I do hereby declare that the following is a full, clear, and exact description thereof, which will enable others skilled in the art to make and use the same, reference being had to the accompanying drawing forming part of this specification, in which—

Figure 1 is a detail vertical section of my improved mica-frame, showing it in place in the body of the stove.

Figure 2 is a detail sectional view of the same, taken through the line *x x*, fig. 1, and showing the mica-frame turned down.

Similar letters of reference indicate corresponding parts.

My invention has for its object to improve the construction of mica-frames for stoves, heaters, &c., in such a way that the mica can be conveniently cleaned or replaced when desired; and

It consists in the construction of various parts of the mica-frame, as hereinafter more fully described.

A represents the part of the body of the stove or heater with which the mica-frame B C is connected.

The outer frame B is made of such a size as to overlap the edges of the opening in the body A of the stove, and may be made plain or ornamental, as may be desired.

The lower edge *b'* of the frame B projects inward and has notches formed in its edges to receive the edges of the body A.

The inwardly-projecting part or end *b'* of the frame B thus serves a double purpose: first, to support the frame B, by resting upon the edge of the body A at the lower end of the opening in said body; and, second, to serve as a hinge to enable the mica-frame B C to be turned down into the position shown in fig. 2, for convenience in cleaning or replacing the mica-plate.

The frame B C, when turned down, may also serve

as a shelf to hold a sad-iron or other thing to be heated.

The frame B is secured in place when raised or closed by a catch, *b²*, which catches upon a projection or shoulder formed upon the body A of the stove, just above the upper end of the opening through said body.

The frame B is formed with a recess, depression, or shoulder, around the inner side of its inner edge, to receive the mica-plate and the frame C, by which the said mica-plate is secured in place.

The inner frame C fits into the recess upon the inner side of the frame B, and has lugs, *c'*, formed upon its upper and lower ends, which lugs enter recesses in the upper and lower ends of the frame B, to secure the said frame C in place.

The lugs *c'* are made of such a length, and the frame C is made so much shorter than the recess in the frame B, in which it is placed, that it may be raised or pushed up enough to allow the lower lugs *c'* to be slipped out of its recess and the frame C to be removed from the frame B, so that the mica-plate can be conveniently put in or taken out.

Having thus described my invention,

I claim as new and desire to secure by Letters Patent—

1. An improved mica-frame for stoves, heaters, &c., in which the inner frame C is detachably secured to the recessed outer frame B by means of lugs *c'* formed upon its upper and lower ends to enter recesses in the upper and lower ends of the recessed outer frame B, substantially as herein shown and described, and for the purposes set forth.

2. The inwardly-projecting lower end *b'* of the frame B, notched to receive the edges of the body A of the stove, to connect and hinge the mica-frame B C to the said body of the stove, substantially as herein shown and described, and for the purpose set forth.

GEO. G. RICHMOND.

Witnesses:

WILLIAM F. ARMSTRONG,
S. R. KNAPP.