

H. S. Smythe,
Boot & Shoe Heel.

No. 111,986.

Patented Feb. 21, 1871.

Fig. 1

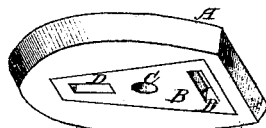


Fig. 2

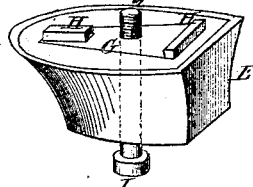


Fig. 3

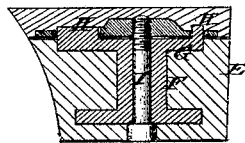
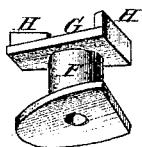


Fig. 4.



Witnesses:

Ludwig A. Dittmerich
S. S. Mabel

Inventor:

H. S. Smythe
PER *Munn & Co*
Attorneys.

United States Patent Office.

HOMER S. SMYTHE, OF DARLINGTON, WISCONSIN.

Letters Patent No. 111,986, dated February 21, 1871.

IMPROVEMENT IN HEELS OF BOOTS AND SHOES.

The Schedule referred to in these Letters Patent and making part of the same.

To all whom it may concern:

Be it known that I, HOMER S. SMYTHE, of Darlington, in the county of La Fayette and State of Wisconsin, have invented a new and useful Improvement in Heels for Boots and Shoes; and I do hereby declare that the following is a full, clear, and exact description thereof, which will enable others skilled in the art to make and use the same, reference being had to the accompanying drawing forming part of this specification.

This invention relates to improvements in the construction and arrangement of heels for boots and shoes, and consists in making the heels in two parts, one of leather, permanently attached, and the other of India rubber or other substance, which may be molded, and attaching it by means of a screw-bolt passing through a metallic plate or block formed in the detachable part, and screwing into a metal-plate bedded in the other part, all as hereinafter more fully specified.

Figure 1 is a perspective view of the part which is permanently attached;

Figure 2 is a perspective of the detachable part;

Figure 3 is a section of the two parts joined together; and

Figure 4 is a view of the metal block molded into the detachable part.

Similar letters of reference indicate corresponding parts.

A is the part to be made of leather and permanently attached.

It is provided with a metallic plate, B, let into its lower surface flush with it.

This plate is provided with a screw-threaded hole, C, and one or more sockets, D. It is secured by nailing through holes formed around the edge.

E is the detachable part, to be made of India rubber, or any substance which may be molded, or any composition of India rubber and other suitable substances.

It is provided with a metal block, F, around which it is cast so as to hold the block firmly.

This block has a plate, G, flush with the face, which fits on the face of part A, from which lugs H project to fit into the sockets D.

The said block also has a hole through it, which coincides with the hole C, through which a bolt, I, passes to attach part E to the other part.

It is designed that the respective parts shall all be made alike, so that the detachable parts may be changed from side to side in case they wear off too fast on one side or the other, to equalize the wear.

Having thus described my invention,

I claim as new and desire to secure by Letters Patent—

The permanent leather piece A, threaded and socketed metallic plate B C D, detachable rubber piece E, metal block F, and threaded bolt I, all combined, constructed, and relatively arranged as and for the purpose described.

HOMER S. SMYTHE.

Witnesses:

J. H. SMYTHE,
A. McALLISTER.