

JAMES FISH.

Improvement in Stereotype-Blocks.

No. 114,786.

Patented May 16, 1871.

Figure 1.

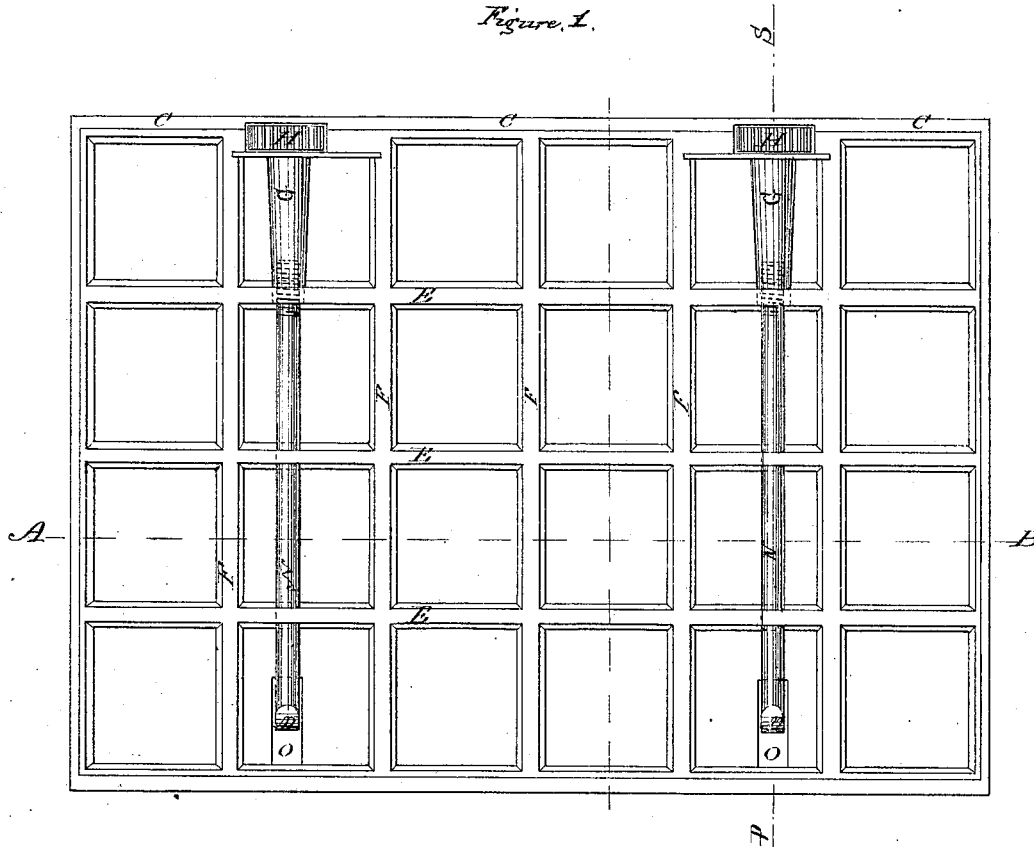


Figure 2.
Section through A.B.

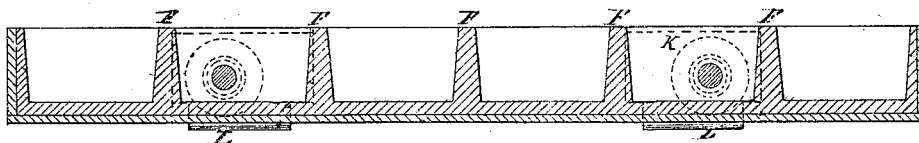
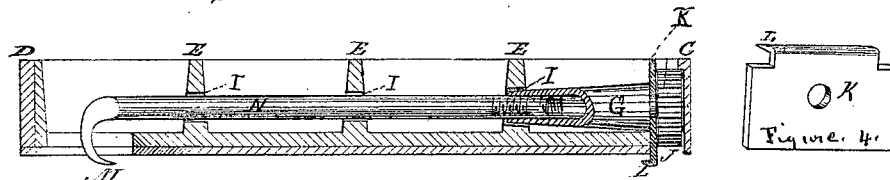


Figure 3.
Section through P.S.



W. P. Lyman
W. S. Wright

Witness

James Fish
Inventor.

United States Patent Office.

JAMES FISH, OF CHICAGO, ILLINOIS

Letters Patent No. 114,786, dated May 16, 1871.

IMPROVEMENT IN STEREOTYPE-BLOCKS.

The Schedule referred to in these Letters Patent and making part of the same.

To all whom it may concern :

Be it known that I, JAMES FISH, of the city of Chicago, county of Cook and State of Illinois, have invented a new and useful Improvement in "Metallic Stereotype and Electrotype-Blocks for Printers' Use;" and I do hereby declare the following to be a full, clear, and exact description of the construction and operation of the same, reference being had to the annexed drawing making a part of this my specification.

The nature of my invention consists in the construction of such stereotype or electrotype-blocks in such a manner as to impart additional strength and durability to the same by means of lateral and longitudinal ribs running the extreme length and width thereof.

To enable others skilled in the art to make and use my invention, I will describe the construction and operation of the same.

Figure 1 of the drawing represents a top view of the block.

Figure 2, a cross-section taken in line A B, fig. 1.

Figure 3, a cross-section in line P S, fig. 1.

I prepare a mold of proper form, as in an ordinary casting. Plates of brass, copper, iron, or other metallic substances are constructed of the desired dimensions, and adjusted to the vertical walls of the mold

in such a way as to form a continuous metallic lining or frame, which is then covered by placing above and upon the same an additional metallic plate.

The ribs E and F, as shown in the drawing, are formed in such a manner as to run the whole length and width of the said block, making the squares as shown in fig. 1. These ribs may run also diagonally and still subserve the same purpose; they serve to strengthen and render more durable the block aforesaid, beyond any devices used in the ordinary mode of constructing such blocks.

What I claim as my invention, and desire to secure by Letters Patent, is—

The vertical ribs E E and F F, running laterally and longitudinally the whole length and width of the stereotype or electrotype-block, in the manner and for the purpose herein set forth.

In testimony whereof I have signed my name to this specification in the presence of two subscribing witnesses.

JAMES FISH.

Witnesses:

W. S. WRIGHT,
N. R. LYMAN.