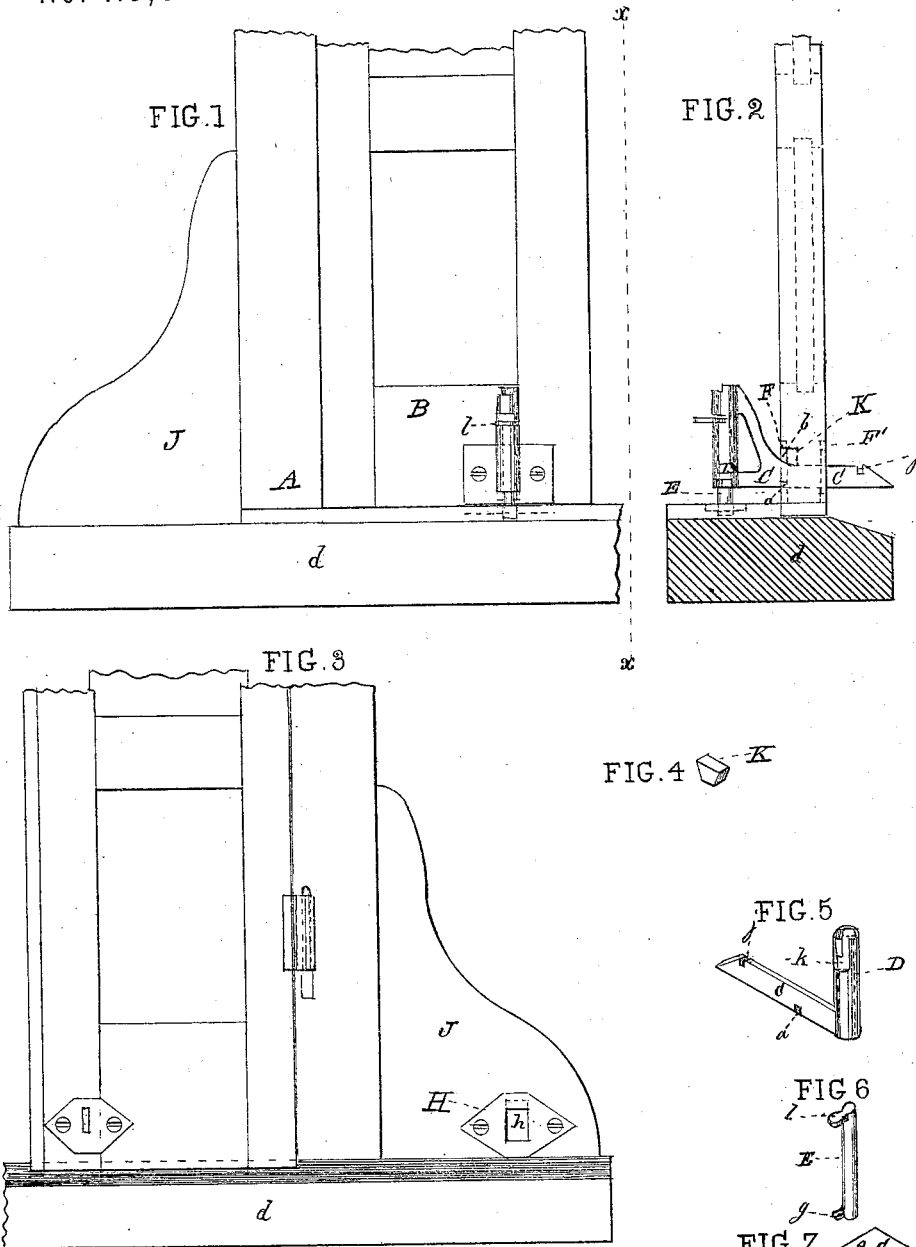


PETER KEFFER.

Improvement in Shutter Fasteners.

No. 115,063.

Patented May 23, 1871.



WITNESSES.

Thomas J. Beasley.  
 Isaac P. Wendell

Peter Keffer  
 Stephen W. Vick City.

# UNITED STATES PATENT OFFICE.

PETER KEFFER, OF READING, ASSIGNOR TO HIMSELF AND JOHN DROXEL,  
OF EXETER TOWNSHIP, PENNSYLVANIA.

## IMPROVEMENT IN SHUTTER-FASTENERS.

Specification forming part of Letters Patent No. 115,063, dated May 23, 1871.

I, PETER KEFFER, of Reading, in the county of Berks and State of Pennsylvania, have invented certain Improvements in Shutter-Fasteners, of which the following is a specification:

The nature of my invention consists of a spring-lever catch and bolt combined with the shutter, and so arranged that one end of the spring-lever catch may be brought into connection with a slotted plate fastened to a bracket of the window-frame, when the shutter is thrown back against the window, to hold the shutter in that position; and the bolt, which slides in a vertical socket in the other end of the lever, may be shot into a plate sunk in the window-sill, when the shutter is closed, to hold it securely.

To enable others to construct and use my improved fastener, I will now give a full description thereof.

In the accompanying drawing, which makes a part of this specification, Figure 1 is a side elevation of a portion of the window-frame A, and a shutter, B, seen from the inside of the room. Fig. 2 is an edge view of the same looking from the dotted line *xx* of Fig. 1. Fig. 3 is an outside view corresponding to Fig. 1. Fig. 4 is an isometrical view of the rubber spring K. Fig. 5 is a like view of the combined lever-catch and socket C D. Fig. 6 is a like view of the bolt E. Fig. 7 is a like view of the plate G.

Like letters in all the figures indicate the same parts.

A is a portion of the window-frame, and B a portion of one of the shutters. C is a lever, which has a socket, D, at one end, for holding the bolt E. In the lower edge of the lever there is a notch, *a*, which connects with the fulcrum-plate F, seen in Fig. 1, there being a slot, *b*, in the plate for the passage of the lever C. The opening is continued through the shutter and through a similar plate, F', on the

outside of the same. G is a plate, shown in detail in Fig. 7, which is secured in the top surface of the sill *d* of the window-frame A. The plate has a hole, *e*, for the reception of the lower end of the bolt E, for fastening the shutter in its closed position, as seen in Fig. 1. The said hole has an extension, *f*, at one side for the passage through of the lug *g* on one side of the bolt, so that, by turning the bolt partly around, it cannot be shot back until brought into its former position. H is a plate, made fast to the bracket J of the window-frame, or the side of the wall. It has a slot, *h*, through which the end of the lever C is passed to connect the notch *j* with the upper edge of the slot, to hold the shutter back against the wall, the gum spring K, which is inserted in the shutter B back of the plate F, forcing the front end of the lever C down, and thereby throwing the other end up to hold it in connection with the plate F.

The gum spring K, combined lever C, and socket D, bolt E, and plate G, are shown respectively in Figs. 4, 5, 6, and 7.

For giving increased security to the holding of the bolt E, the socket D is constructed with a bayonet-slot, *k*, at its upper end, for the passage of the neck of the thumb-handle *l*.

What I claim as my invention, and desire to secure by Letters Patent, is—

The combined lever-catch and socket C D and bolt E, in combination with the shutter B, spring K, and plates F, G, and H, arranged substantially as described, and for the purpose set forth.

In testimony that the above is my invention I have hereunto set my hand and affixed my seal this 3d day of April, 1871.

PETER KEFFER. [L. S.]

Witnesses:

S. A. STOUT,  
GEORGE PRINTZ.