

T. W. BRACHER.
Sweat-Bands for Hats and Caps.
No. 217,576. Patented July 15, 1879.

Fig. 1.

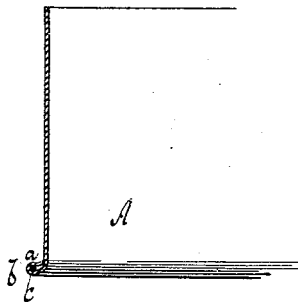


Fig. 2.

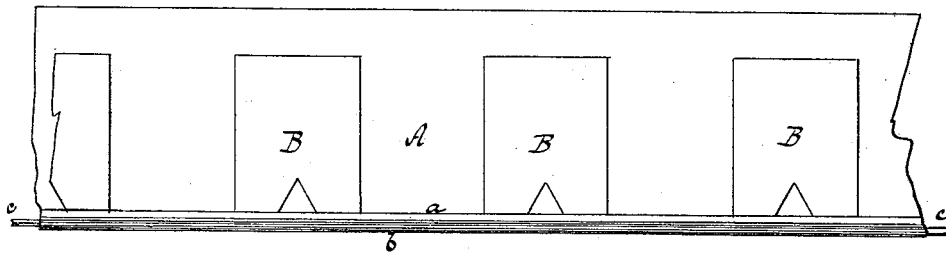
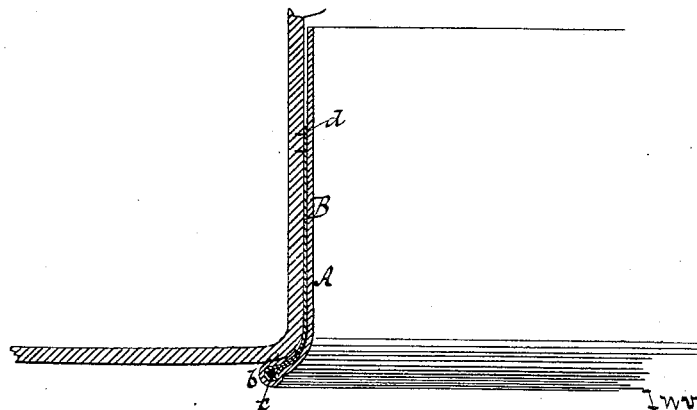


Fig. 3.



Witnesses.
Otto Aufeland.
Wm Miller.

Inventor.
Thomas W. Bracher
by Van Santvoord & Hauff
his attys.

UNITED STATES PATENT OFFICE.

THOMAS W. BRACHER, OF NEW YORK, N. Y. .

IMPROVEMENT IN SWEAT-BANDS FOR HATS AND CAPS.

Specification forming part of Letters Patent No. **217,576**, dated July 15, 1879; application filed November 9, 1878.

To all whom it may concern:

Be it known that I, THOMAS W. BRACHER, of the city, county, and State of New York, have invented a new and useful Improvement in Sweat-Bands for Hats and Caps, which improvement is fully set forth in the following specification, reference being had to the accompanying drawings, in which—

Figure 1 represents a transverse section. Fig. 2 is an inside view. Fig. 3 is a transverse section of the same as applied to a hat.

Similar letters indicate corresponding parts.

This invention consists essentially in the combination of a reed, cord, or wire with a layer of india-rubber or other suitable cement and the sweat-band, so that when said band is turned over the reed, cord, or wire and exposed to the action of heated rollers it will be caused to stick to the main body of said sweat-band, and at the same time the reed will be firmly retained in position. Beneath the turned-over edge of the sweat-band is placed a lining, which may be made continuous or in sections, and which is secured in position at the same time the turned-over edge is cemented to the main body of the sweat-band by the action of heated rollers on the cement, on the cement-coated reed, or on the band.

In the drawings, the letter A designates my sweat-band, the edge *a* of which is turned over a reed, cord, or wire, *c*, and then stretched by the action of rollers or other suitable means, so that a brim or flange, *b*, is formed, which, when my sweat-band is placed into a hat or cap, overlaps the edge of the crown. The reed, cord, or wire *c* must be somewhat longer than the inside circumference of the hat, and assists in retaining the brimmed edge *a* in position.

By providing my sweat-band with a brim, the operation of securing the same in the hat or cap is materially facilitated, since it requires no stitching on its outer or turned-over edge, and it will be firmly retained by securing its body to the crown by two or three eyelets, or by a few stitches through its lining.

The reed, cord, or wire *c* is coated with india-rubber or other suitable adhesive substance, so that, when the edge of the sweat-

band is folded over the reed and exposed to the action of heated rollers, the coating of the reed will melt, and the turned-over edge is firmly cemented to the reed and to the body of the sweat-band.

Instead of applying the coating of india-rubber or other adhesive material to the reed, cord, or wire, however, the same effect is produced by applying the adhesive material to the inner surface of the sweat-band.

If my sweat-band is to be provided with a lining, B, I place the edge of such lining beneath or partly round the coated reed, and by folding over the edge of the sweat-band and cementing it to the body thereof, as above stated, the lining is also retained in position. By means of this lining my sweat-band can be readily secured to the crown of a hat or cap by concealed stitches *d*, as shown in Fig. 3. In order to allow the turned-over edge to adhere at some portions to the body of the sweat-band, the lining is either made in sections, or portions of said lining are cut away, as shown in Fig. 2.

I am aware that sweat-bands have been made with a turned-over edge containing a reed the ends of which are firmly connected, and which is longer than the inside circumference of the crown, so that, by the expansion of the reed, a brim is formed on the sweat-band. Such brim, however, depends solely upon the action of the reed, while the brim of my sweat-band remains permanent, and my sweat-bands can be readily adjusted in hats or caps of different sizes.

I do not claim in this present application the combination of a lapped and stretched edge sweat-leather with a covered reed, as the present invention consists in introducing a reed or other suitable device directly into the bight of the band of leather or other material, and not into the bight of the lining.

What I claim as new, and desire to secure by Letters Patent, is—

1. The combination of a reed, cord, or wire coated with india-rubber or other suitable adhesive substance with the turned-over edge of a sweat-band, substantially as and for the purpose described.

2. A sweat-band having a folded-over edge,

between which and the main portion of the band is a wire, reed, or cord and a layer of india-rubber or other adhesive material, which, on being subjected to heat, secures the folded edge and said wire, reed, or cord in position and to the main portion of the sweat-band, whereby sewing is dispensed with, substantially as set forth.

3. A sweat-band having an attached backing of oil-silk or similar material adapted to

be secured to the crown of a hat by cement, and to hold the sweat-band therein, substantially as described.

In testimony that I claim the foregoing I hereunto set my hand and seal this 6th day of November, 1878.

T. W. BRACHER. [L. S.]

Witnesses:

W. HAUFF,

E. F. KASTENHUBER.