

J. B. BOLINGER.
Gate Hinge and Roller.

No. 217,674.

Patented July 22, 1879.

Fig. 1.

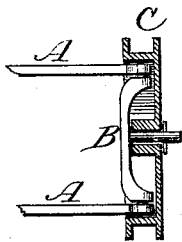
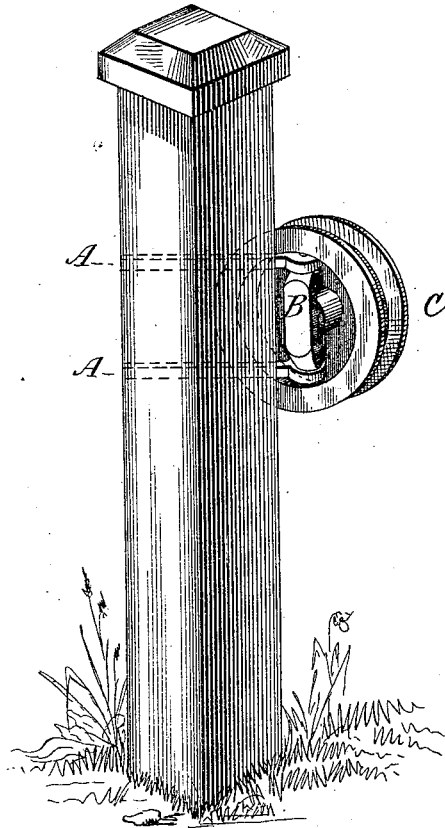


Fig. 3.

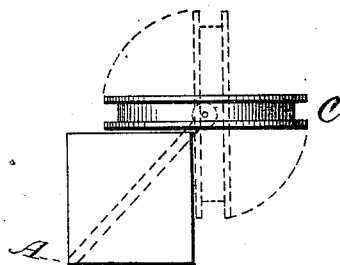


Fig. 2.

Attest:

Inventor.

Jas Hammill
R. D. Knowles

John B. Bolinger

UNITED STATES PATENT OFFICE.

JOHN B. BOLINGER, OF JACKSON, MICH., ASSIGNOR OF A PART OF HIS RIGHT
TO NICHOLAS G. HEYMAS AND DANIEL KELLOGG, OF SAME PLACE.

IMPROVEMENT IN GATE HINGE AND ROLLER.

Specification forming part of Letters Patent No. **217,674**, dated July 22, 1879; application filed
October 7, 1878.

To all whom it may concern:

Be it known that I, JOHN B. BOLINGER, of Jackson, Jackson county, and State of Michigan, have invented certain new and useful Improvements in Gate Roller and Hinge Combined; and I do hereby declare that the following is a full, clear, and exact description of the invention, which will enable others skilled in the art to which it pertains to make and use the same, reference being had to the accompanying drawings, and to the letters of reference marked thereon, which form a part of this specification.

The object of my invention is to furnish an improved device for opening and closing farm and other gates.

It consists, first, of a wheel with radial projecting flanges at the periphery, a central eye to receive a journal, and an annular recess on one side, between the wall of the eye and the rim; second, a journal for the wheel to roll or revolve on, integral with two arms, curved so that their ends lie within the annular groove in the wheel on opposite sides of the eye; and, third, two eyebolts, that by their eyes encircle, respectively, the two arms near their two ends.

In the drawings, Figure 1 is a perspective view, showing the roller in position to receive the gate. Fig. 2 is a vertical view, showing the position of the roller and eyebolt, when the gate is open, by dotted lines. Fig. 3 is a sectional view of roller, also showing the journal

for the wheel to revolve on, and showing the method of connecting the eyebolts with the two arms forming a hinge.

C is a wheel, with radial projecting flanges at the periphery, and a central eye to receive the journal B, with an annular recess on one side between the wall of the eye and the rim. B is a journal, fitting in the eye of pulley C, for C to revolve on, having two integral arms, curved so that their ends lie within the annular groove in the wheel C on opposite sides of the eye. A A are two eyebolts, that by their eyes encircle, respectively, the two arms of B near their ends, and driven into the corner of the gate-post, in the usual manner.

In order to operate this gate-roller, one of the boards of the gate is placed between the radial flanges of the roller. It is then rolled back to its center, where the gate balances, and is very easily swung open, as shown in Fig. 2 by dotted lines.

Having described my invention, what I claim, and desire to secure by Letters Patent, is—

The combination of the pulley C with the journal and its two integral arms B, constructed as described, and eyebolts A A, as and for the purpose specified.

JOHN B. BOLINGER.

Witnesses:

JAS. HAMMILL,
R. D. KNOWLES.