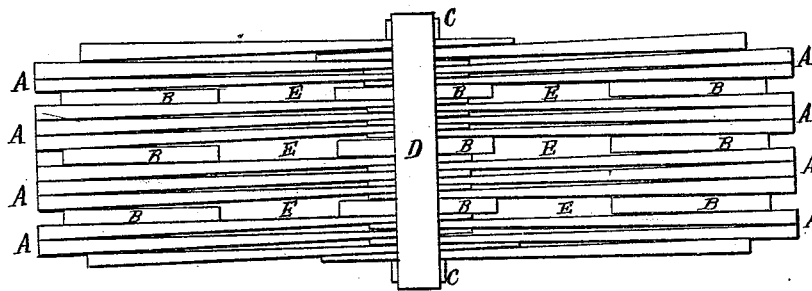


R. B. & H. H. RUSSELL.  
Process for Packing Shingles.

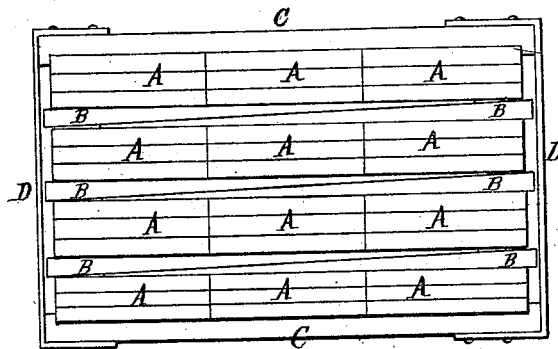
No. 217,748.

Patented July 22, 1879.

*Fig. 1.*



*Fig. 2.*



WITNESSES:

*Henry N. Miller*  
*C. Sedgwick*

INVENTOR:

*R. B. Russell*  
*H. H. Russell*  
BY *Mum & Co.*  
ATTORNEYS.

# UNITED STATES PATENT OFFICE.

ROBERT B. RUSSELL AND HENRY H. RUSSELL, OF ORANGE, TEXAS.

## IMPROVEMENT IN PROCESSES FOR PACKING SHINGLES.

Specification forming part of Letters Patent No. **217,748**, dated July 22, 1879; application filed May 16, 1879.

*To all whom it may concern:*

Be it known that we, ROBERT BENEDICT RUSSELL and HENRY HOYT RUSSELL, of Orange, in the county of Orange and State of Texas, have invented a new and useful Improvement in Packing Shingles, of which the following is a specification.

Figure 1 is a side elevation of a pack of shingles. Fig. 2 is an end elevation of the same.

Similar letters of reference indicate corresponding parts.

The object of this invention is to provide a simple and efficient method for packing or bunching shingles in such a manner that they shall quickly dry and be prevented from molding and decaying.

The invention consists of building up the bunch or pack of shingles with two or more layers, A, placed lengthwise, point overlapping point in the usual manner, and placing across them transversely at three different points, at the center and near the ends of the pack, two or more shingles, B, with points overlapping; then two or more layers are placed lengthwise, to be crossed by others laid transversely, and thus the pack is built up with alternate layers.

Two bars of wood, C, are laid transversely across the center of the pack, at the top and

bottom, and are connected and drawn tightly to hold the shingles together by the sheet tin or iron straps D D, that are nailed upon their ends.

This mode of packing shingles leaves or creates spaces E E throughout the pack, through which the air will circulate to dry them and prevent decay.

By this method, also, the shingles are held together more securely than by the usual method, and the packs will be of less weight and more easy to handle.

Having thus described our invention, we claim as new and desire to secure by Letters Patent—

The within-described method of packing shingles, consisting of placing or arranging them in alternate longitudinal and transverse layers, so as to create air-spaces throughout the pack, and securing the pack together with two cross-bars, of wood, drawn tightly upon the center of the pack by tin or sheet-iron bands, substantially as herein shown and described.

ROBERT BENEDICT RUSSELL.  
HENRY HOYT RUSSELL.

Witnesses:

J. S. ANDERSON,  
WM. E. REED.