

E. A. HOLBROOK & A. E. YORK.  
Window-Blind Operator.

No. 217,873.

Patented July 29, 1879.

Fig. 2.

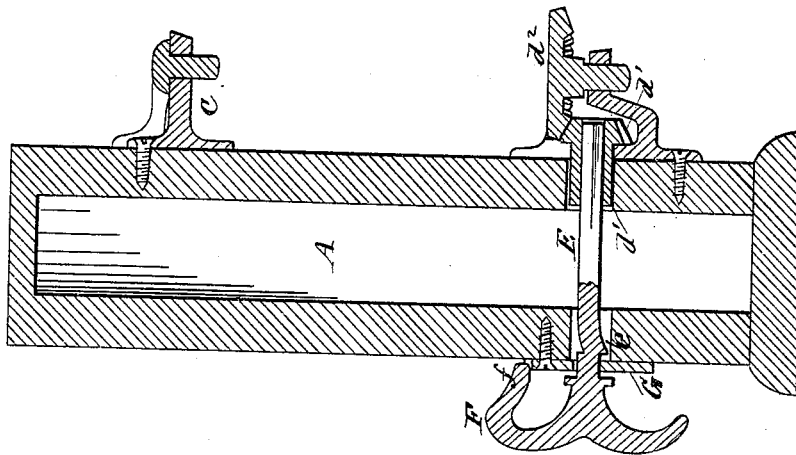
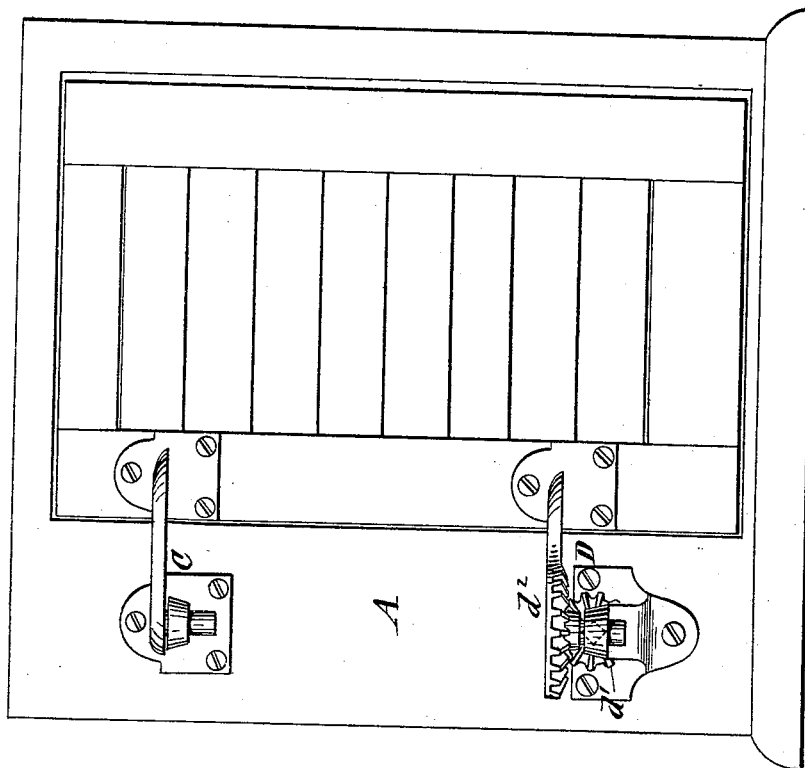


Fig. 1.



Witnesses:

*E. A. Dick*  
*D. P. Howl*

Inventors:

*Edwin A. Holbrook*  
*and Anson C. York*  
*by A. Pollok atty*

# UNITED STATES PATENT OFFICE.

EDWIN A. HOLBROOK AND ANSON E. YORK, OF WATERTOWN, NEW YORK.

## IMPROVEMENT IN WINDOW-BLIND OPERATORS.

Specification forming part of Letters Patent No. **217,873**, dated July 29, 1879; application filed April 1, 1879.

### *To all whom it may concern:*

Be it known that we, EDWIN A. HOLBROOK and ANSON E. YORK, both of Watertown, Jefferson county, and State of New York, have invented a new and useful Improvement in Devices for Operating Window-Blinds, which improvement is fully set forth in the following specification.

Our invention relates to means whereby window-blinds can be opened, shut, and fastened without opening the window. To accomplish this result one of the hinges is geared with a shaft extending through the wall or casing, to which the hinges are secured, so that by turning the shaft by means of a suitable handle the blinds may be opened or closed.

This invention consists in a sliding shaft and handle of peculiar construction, and in combination thereof with a rosette with simple notches adapted to engage with a lug on the handle.

In the drawings, Figure 1 is a front view of the blind closed, and Fig. 2 a section showing the construction of the operating mechanism.

A is the window-casing or wall of the house, to which the blind, by means of the hinges C D, is fastened, the lower of which is provided with gears  $d^1$   $d^2$ , the latter being formed in one piece with that part of the lower hinge which is attached to the blind.

E is the sliding shaft, which is free to slide, but not to turn, in the gear or pinion  $d^1$ ; F, the handle, and G the rosette.

The shaft E and handle F are wrought or cast in one piece, with a peculiar crook or upset,  $e$ , in the shaft, near the handle, so that a rosette, G, with simple notches around the rim, can be put to its place on the shaft adjoining the handle by tipping it at acute angles with the shaft, and when at its place turning at right angles with the shaft.

When the rosette is fastened to the window-casing A, sufficient play is given for the shaft to slide inward to lock the blind by means of a lug,  $f$ , which is a part of the handle, entering into the simple notches in the rim of the rosette. By pulling the shaft out it is un-

locked, and is then free to be rotated to move the blind.

The bearing of the rosette coming in contact with the upset  $e$  in the shaft prevents the shaft from pulling out any farther than necessary for the above purposes.

The shaft slides in the pinion or gear  $d^1$  in the outside geared hinge, instead of being fastened thereto; hence no drilling of holes or riveting is necessary to fasten the two together. There is no riveting on of the handle or pin to hold the rosette, and no rivets are required in any part of the device; but when the rosette G is screwed to the casing the whole is secured in its place.

The whole expense is simply that of cast-iron, adding the cost of finish on the rosette and handle.

The blind is easily operated; the fastening simple and perfect, so that wind does not affect it; and it can be keyed to the side of the house, so that there is no rattling.

Having described our invention, and the manner in which the same is or may be carried into effect, what we claim, and desire to secure by Letters Patent, is—

1. In a shutter-worker arranged to operate the shutter by means of a hinge provided with gears, the handle and sliding shaft in one piece, the said shaft being formed with a crook or upset at a suitable distance from the handle, in combination with means for limiting the outward movement of the shaft by said upset or crook, substantially as described.

2. The handle provided with a lug thereon and sliding shaft formed with a crook or upset, in combination with a hinge, with gears, and with a rosette having simple notches, substantially as described, whereby the blind may be moved and fastened in any position, as above set forth.

In testimony whereof we have signed this specification in the presence of two subscribing witnesses.

EDWIN A. HOLBROOK.  
ANSON E. YORK.

Witnesses:

WATSON M. ROGERS,  
D. J. CUMINGS.