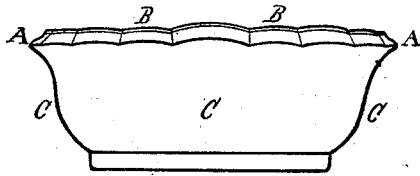


I. DAVIS.  
Dish of Pottery-Ware.

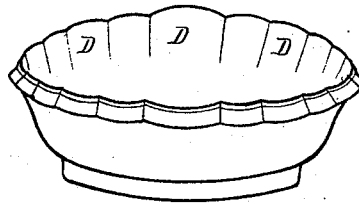
No. 218,942.

Patented Aug. 26, 1879.

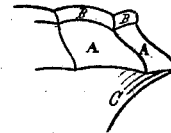
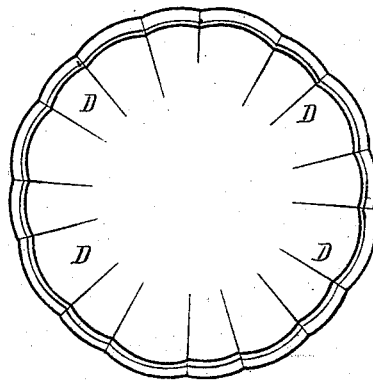
*Fig. 1.*



*Fig. 2.*



*Fig. 3.*



*Fig. 4.*

Witnesses:

E. B. Learning  
J. T. Shook

Inventor:

Isaac Davis

# UNITED STATES PATENT OFFICE.

ISAAC DAVIS, OF TRENTON, NEW JERSEY.

## IMPROVEMENT IN DISHES OF POTTERY-WARE.

Specification forming part of Letters Patent No. 218,942, dated August 26, 1879; application filed April 25, 1879.

*To all whom it may concern:*

Be it known that I, ISAAC DAVIS, of the city of Trenton, in the county of Mercer and State of New Jersey, have invented a new and useful Improvement in Dishes in Pottery-Ware, of which the following is a specification.

My invention consists of a dish of pottery-ware known to the trade as a "scalloped nappie," of new and improved arrangement of parts and form, molded and shaped by a new and improved method.

I first take a mold known to the trade as an "outside" mold—*i. e.*, a mold on which the material of which the dish is to be formed is placed upon the outside. This mold is so shaped as to form flutings upon the inside of the dish, and also a scalloped upper edge to the dish. Placing the clay or other material or materials of which the dish is to be formed upon the outside of the mold, I then form the dish by pressing the material firmly against the mold and into the cavities which form the scalloped upper edge, and, with any suitable tool, smooth it upon the outside, thus, by a single and simple operation, forming a dish plain and smooth upon the outside, fluted inside, and with a scalloped upper edge.

The nature of my invention will be better understood by reference to the accompanying drawings.

Figure 1 is a plain side view of the nappie. Fig. 2 is a perspective view of the nappie. Fig. 3 is a view of my nappie looking straight and full down into the dish. Fig. 4 is an enlarged section of the scalloped upper edge, showing the bead.

In Fig. 1, A A A are the scalloped upper edge, with the bead B B B, and C C C are the sides. These sides are constructed preferably gradually flaring in shape. In Fig. 2 are seen the inside flutings, D D D. In Fig. 3, D D D are the inside flutings, in combination with the bead and upper edge. In Fig. 4, A A are the scalloped edge, B B are the bead, and C is the side, sectionally shown.

I am aware that nappies with a scalloped under edge are not new. I am also aware that nappies with sides corrugated or fluted on the outer, and plain and smooth upon the inner, side are not new. Such I do not claim.

What I do claim as my invention, and desire to secure by Letters Patent, is—

1. In a nappie, a scalloped upper edge, either with or without the surmounting bead B B B, in combination with the sides C C C, plain upon the outer side and either plain or fluted upon the inner side, all substantially as shown and described.

2. The hereinbefore-described process of forming a nappie, by molding the material upon an outside mold, so shaped as to give a fluted inside to the inner side of the nappie and a scalloped upper edge to the nappie, with or without the surmounting bead, and shaping the said material smooth upon the outer side with any suitable tool, substantially as shown and described.

ISAAC DAVIS.

Witnesses:

E. B. LEAMING,  
I. T. WOOD.