

(No Model.)

D. B. TURNBULL.

WAGON BOLSTER.

No. 260,137

Patented June 27, 1882.

Fig. 1

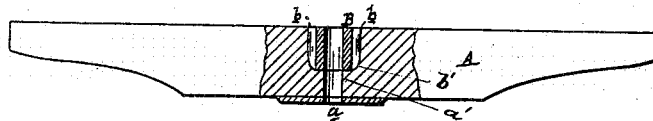


Fig. 3.

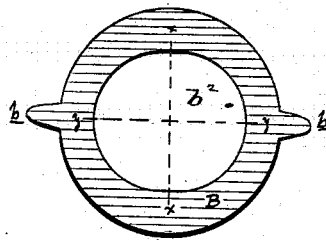
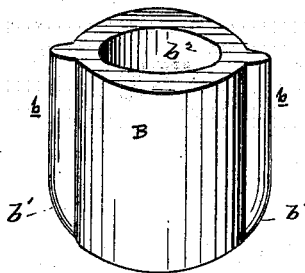


Fig. 2.



Witnesses
J. B. Sprague
C. Scully.

Inventor
D. B. Turnbull
by Wm. H. Sprague

UNITED STATES PATENT OFFICE.

DAVID B. TURNBULL, OF DEFIANCE, OHIO.

WAGON-BOLSTER.

SPECIFICATION forming part of Letters Patent No. 260,137, dated June 27, 1882.

Application filed March 29, 1882. (No model.)

To all whom it may concern:

Be it known that I, DAVID B. TURNBULL, of Defiance, in the county of Defiance and State of Ohio, have invented new and useful Improvements in Wagon-Bolsters; and I hereby declare that the following is a full, clear, and exact description thereof, reference being had to the accompanying drawings, which form a part of this specification.

10 The nature of this invention relates to new and useful improvements in the construction of wagon-bolsters, by means of which the wear of the king-bolt in the bolster is avoided, the tendency to the breaking of the king-bolt materially lessened, and which will admit of a
15 free and easy rocking of the bolster without injury to the king-bolt.

As bolsters are ordinarily constructed they are provided with a central hole to receive the
20 king-bolt, and the top and bottom of the central part of the bolster is provided with a wearing-plate of iron, with holes coincident with the king-bolt hole.

The invention consists essentially in a thimble-lining of cast-metal or other material, having oval central apertures and longitudinal ribs with beveled lower surfaces. This thimble is adapted to be driven into an aperture formed in the bolster to form a tight and secure joint,
30 the beveled ribs allowing for the displacement of the wood fiber as the thimble is driven home, when the upper edge remains flush with the upper surface of the bolster. The thimble extends approximately half-way through the bolster, thereby avoiding the loss of strength at
35 that point which would follow if the thimble extended all the way through. A plate is secured upon the bottom of the bolster, having a circular aperture to receive the king-bolt, while the said king-bolt has lateral play in the oval aperture in the thimble. The hole in the plate and the hole through the bolster are coincident; and it will be observed that the king-bolt has a bearing upon the wood portion below the thimble, thus preventing the wear upon
45

the king-bolt, which occurs where the upper bearing is round.

The invention is illustrated in the accompanying drawings, in which Figure 1 is a partial sectional view of a wagon-bolster with my improvement, and Figs. 2 and 3 detached views of the thimble.

Referring to the drawings, A represents an ordinary bolster, having a king-bolt hole, *a*, and cut away for approximately half its depth to form a bearing for a thimble-lining, B, having external longitudinal ribs, *b*, inclined or beveled at *b'*, to facilitate the driving and binding of said thimble. When in place the upper surfaces of the thimble and bolster are flush to economize room, &c., and the thimble has an internal oval aperture, *b²*, which allows a limited play to the king-bolt. By this construction the king-bolt bears upon the wood of the bolster at *a'*, and the oval aperture *b²* allows the bolster to rock without danger of bending the king-bolt.

I am aware that thimbles having plain longitudinal ribs adapted to extend entirely through the bolster are old, and such construction is not sought to be covered in this application.

What I claim as new is—

1. In a wagon-bolster, a thimble having longitudinal ribs with beveled surfaces and oval aperture to receive the king-bolt and allow the bolster to rock to a limited extent, said thimble extending only a portion of the distance through the bolster and being flush with the upper surface thereof when in position, combined with said bolster and a bottom plate, as
75 and for the purpose set forth.

2. The combination of the bolster A *a*, as shown, and the bottom plate secured upon the lower surface thereof, with the thimble B, having ribs *b* with beveled portion *b'* and oval aperture *b²*, as and for the purposes specified.

DAVID B. TURNBULL.

Witnesses:

A. A. ALDRICH,
JAMES BUTLER.