

(No Model.)

W. H. INSLEE.  
FILE BLOCK HOLDER.

No. 260,685.

Patented July 4, 1882.

Fig. 1.

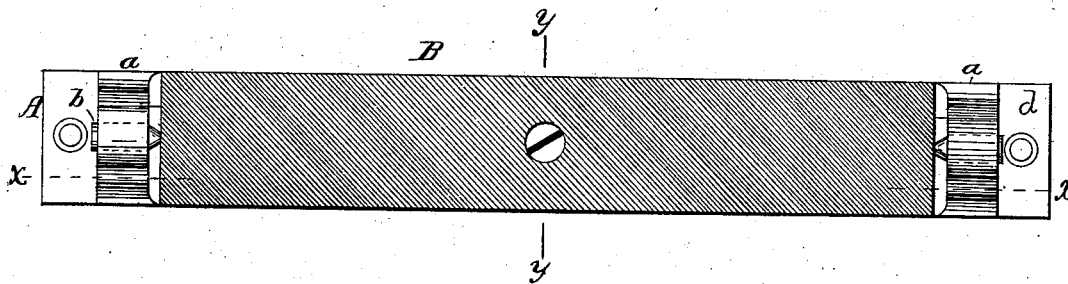


Fig. 2.

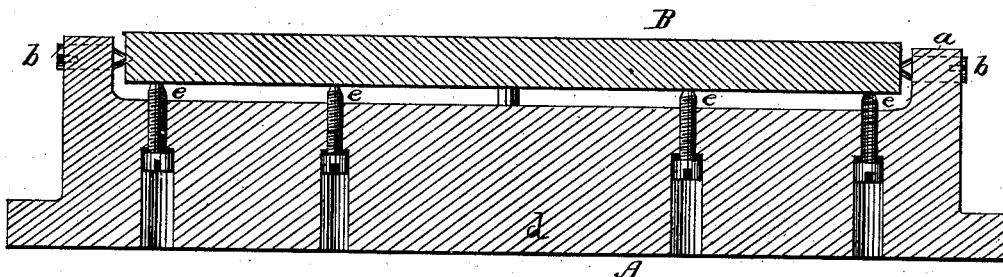
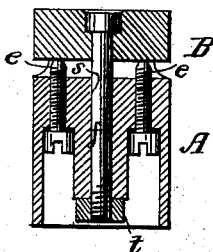


Fig. 3.



WITNESSES:

*Courtney A. Cooper.*  
*H. J. Lammann.*

*Wm. H. Inslee.*

INVENTOR:

*By his attorney*  
*Charles F. Vose*

# UNITED STATES PATENT OFFICE.

WILLIAM H. INSLEE, OF NEWARK, NEW JERSEY, ASSIGNOR TO JAMES KEARNEY AND JAMES D. FOOT, OF NEW YORK, N. Y.

## FILE-BLOCK HOLDER.

SPECIFICATION forming part of Letters Patent No. 260,685, dated July 4, 1882.

Application filed October 20, 1881. (No model.)

*To all whom it may concern:*

Be it known that I, WILLIAM H. INSLEE, of Newark city, in the county of Essex and State of New Jersey, have invented an Improved File-Block-Truing Device, of which the following is a specification.

My invention is a device whereby the file-blocks used for truing surfaces may be brought to coincide absolutely with a flat plane.

In the drawings, Figure 1 is a plan showing my device and a file-block applied thereto. Fig. 2 is a longitudinal section on the line *xx*, Fig. 1. Fig. 3 is a transverse section on the line *yy*, Fig. 1.

B is a file-block constructed as usual, and consisting of a strip of steel having its upper surface roughened in any suitable manner. Such file-blocks have been commonly used for filing or truing parts of machinery (as shuttle-faces, valves, instruments of precision, &c.) which require to be very accurately finished; but their construction has proved expensive from the fact that out of a considerable number of blocks made but few will, when completed, have a surface coinciding exactly with a plane, the blocks warping during the process of manipulation.

I utilize all the blocks made by means of a device whereby the blocks are bent back into shape. This device may be made in different ways. As shown, it consists of a support, A, having a base, *d*, and ears *a a*, adjusting and securing screws *e e f* and pivots *b*.

The pivots have conical points fitting recesses in the ends of the block, and the securing-bolt *f* passes through the block and through a central opening, *s*, in the support, and is provided with a nut at the lower end, whereby the block may be drawn downward at the center, if necessary.

The screws *e* extend through threaded openings in the base, and may be of any suitable number, and may be set so as to bear upon different parts of the back of the block and bend it until the face coincides precisely with a plane. The block, fixed to its support, is then used in the ordinary manner. By this means the block, if warped, may be brought to a true face, and all such blocks heretofore discarded may be utilized.

Cams, wedges, or other devices may be substituted for the set-screws, and the block may be differently supported without departing from the essential features of my invention.

As a general thing it is intended that the support shall be stationary; but where the article to be trued is large the device may be portable, and a handle may be applied at the back by removing the nut *t* and screwing the handle onto the bolt *f*.

I claim—

1. A file-block-truing device, consisting of a base adapted to hold the block firmly and appliances arranged to bear against the back of the block and adjustable, substantially as set forth.

2. The combination of the file-block, support, and set-screws extending through the support and bearing against the back of the block, substantially as set forth.

3. The combination of the support, adjustable bearings, block, and bolt *f*, substantially as specified.

In testimony whereof I have signed my name to this specification in the presence of two subscribing witnesses.

WILLIAM H. INSLEE.

Witnesses:

JOHN R. DUNN,  
DEB. WILMOT.