

(No Model.)

G. W. PARKE.

ADJUSTABLE CLIP FOR DRIVING REINS.

No. 260,893.

Patented July 11, 1882.

Fig. 1.

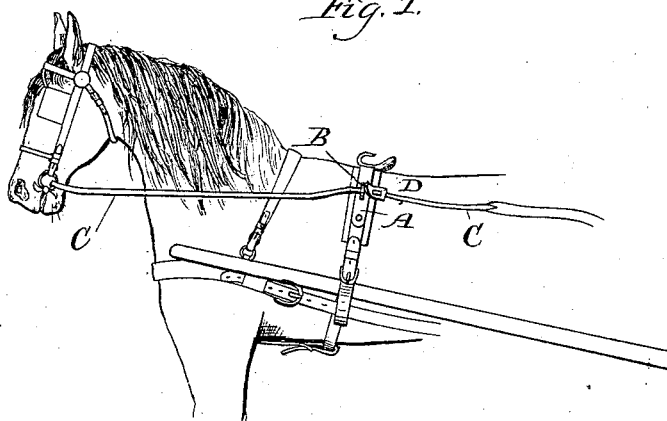


Fig. 2.

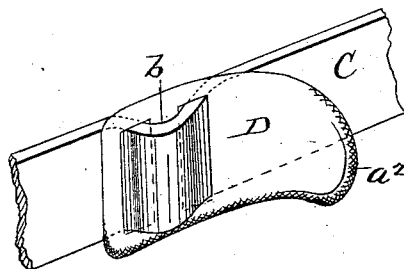
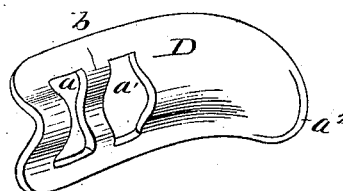


Fig. 3.



WITNESSES—
L. M. Freeman
J. S. Gould

INVENTOR—
Geo. W. Parke
By G. B. Coupland & Co
attys.

UNITED STATES PATENT OFFICE.

GEORGE W. PARKE, OF CHICAGO, ILLINOIS.

ADJUSTABLE CLIP FOR DRIVING-REINS.

SPECIFICATION forming part of Letters Patent No. 260,893, dated July 11, 1882.

Application filed May 24, 1882. (No model.)

To all whom it may concern:

Be it known that I, GEORGE W. PARKE, of Chicago, county of Cook, and State of Illinois, have invented a new and useful Improvement in an Adjustable Clip Attachment for Driving-Reins, of which the following is a description that will enable others to understand and use the same, reference being had to the accompanying drawings, and to the letters of reference marked thereon, forming a part of this specification.

The object of this invention is to provide a device to be placed upon the driving-reins at a point just back of the terret-rings set in the saddle of the harness for the purpose of preventing the lines from being drawn through by the movement of the animal's head when hitched or left standing; and it consists of a clip composed of metal or other suitable material, provided at one end with elongated apertures for the passage of the rein, while the opposite end is curved so as to project outward from the reins, all as will be hereinafter more fully set forth.

Figure 1 is an illustration showing the application of my invention. Fig. 2 shows a part of one of the reins with my improvement attached, and Fig. 3 is a modification in perspective.

Referring to the drawings, A represents the gig-saddle of the harness; B, the terret-ring; C, the reins, and D the clip attachment. The clip D is provided with the elongated openings *a a'*, the reins being passed through one of the apertures over the part *b*, and then through the second aperture, as shown in Fig. 2 of the drawings, the curved end *a²* of the clip being toward the head of the animal. This form of construction conveniently admits of the clip being adjusted to any point on the reins, so as

to give any required length of rein forward of the terret-rings, and at the same time the clip will remain wherever placed. Two of these devices are used with each pair of reins, one on each side of the animal, the outwardly-curved end engaging with the terret-ring and preventing the reins from being drawn through beyond a certain point. By this arrangement the reins are prevented from dropping down and catching under the ends of the shafts, which is the direct cause of many accidents, and the reins may be dropped down loosely in the vehicle without fear of being drawn out by the movement of the animal when left standing. By this arrangement the driving-reins will also perform the functions of a check-rein.

The device is of such dimensions as to be easily passed through the terret-rings when the reins are to be removed, and is very simple and inexpensive, and can be readily attached without requiring any change whatever in any part of the harness.

Fig. 3 shows a slight change in the form of the device, in order to adapt it to be used in connection with a round rein instead of a flat one.

Having thus described my invention, what I claim, and desire to secure by Letters Patent, is—

An adjustable clip, as described, consisting of the body D, provided with the elongated apertures *a a'*, the division part *b*, and having the outwardly-curved end *a²*, substantially as and for the purpose set forth.

GEO. W. PARKE.

Witnesses:

JOHN A. SEAMAN,
L. M. FREEMAN.