

(No Model.)

H. LEIBE.
HARNESS LOOP.

No. 261,240.

Patented July 18, 1882.

Fig.1.

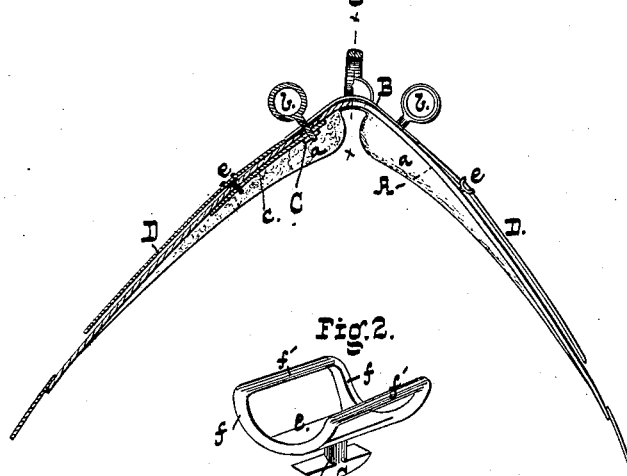


Fig.2.

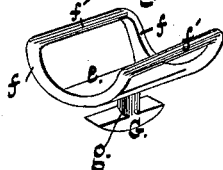


Fig.3.

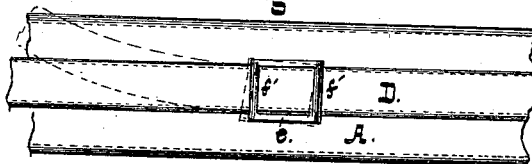
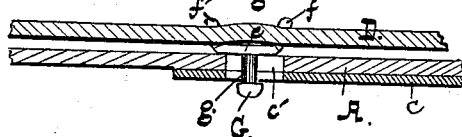


Fig 4.



Witnesses
W A Bertram
Dr H Barclay

Inventor
Hugo Fiebe -
by
R. A. Williams
Attorney

UNITED STATES PATENT OFFICE.

HUGO LEIBE, OF BALTIMORE, MARYLAND, ASSIGNOR OF ONE-HALF TO
WILLIAM M. LERCH, OF SAME PLACE.

HARNESS-LOOP.

SPECIFICATION forming part of Letters Patent No. 261,240, dated July 18, 1882.

Application filed June 1, 1882. (No model.)

To all whom it may concern:

Be it known that I, HUGO LEIBE, of Baltimore city, State of Maryland, have invented certain new and useful Improvements in Harness-Loops; and I hereby declare the same to be fully, clearly, and exactly described as follows, reference being had to the accompanying drawings, in which—

Figure 1 is an elevation of a harness-saddle embodying my invention, the part to the left of the line *x x* being in central longitudinal sectional view. Fig. 2 is a perspective of the loop. Fig. 3 is a plan, and Fig. 4 a section on an enlarged scale, of the loop, back-strap, and saddle.

My invention has reference to loops for attaching straps to harness, and it is especially applicable to the attachment of the back-straps to saddles.

The invention will first be described, and then pointed out in the claims.

In the drawings, A is a saddle, having pads *a a*, terrets *b b*, cap-piece B, and tree *c*. The latter is of metal, and is riveted to the under side of the saddle. The terrets *b* pass through the ends of the back-straps D and screw into nuts C below the tree *c*. Near the lower ends of the latter are formed longitudinal slots *e'*, (see Fig. 4,) and in the saddle are cut slots which register with those in the tree.

The loop *e* is formed of metal suitably japanned or plated, and it is provided with curved side bars, *f*, and cross-bars *f'*, and a

shank, *g*, which terminates in a transverse bar, G.

Instead of two bars *f'*, a single one may cross the loop, which is made of a width to take the back-strap D.

To attach the loop it is turned so as to bring its bar G parallel with the slot *e'*, when it is pressed down through the slot and turned to bring the bar to a position transverse to the slot. The back-strap D is then thrust under the bars of the loop, as shown.

By my construction the loop will play in the slot as the back-strap moves to either side, (see Fig. 3,) and thus prevent wear. Moreover, the device is very cheap, readily applied, and imparts a handsome finish to the saddle.

Having thus described my invention, what I claim is—

1. As an improved article of manufacture, the harness-loop herein described, consisting of a plate provided with side and top bars, *f f'*, and transverse bottom bar, G, the same being adapted for attachment to a harness-saddle, as set forth, and to secure and permit of lateral play of the back-strap.

2. In combination with the saddle and tree having longitudinal slot, the loop *e*, having side and top bars, *f f'*, and transverse bottom bar, G, and the back-strap D, as set forth.

HUGO LEIBE.

Witnesses:

R. D. WILLIAMS,
W. M. LERCH.