

(No Model.)

2 Sheets—Sheet 1.

P. E. BOWE.  
KNOCKDOWN PAPER BOX.

No. 262,201.

Patented Aug. 8, 1882.

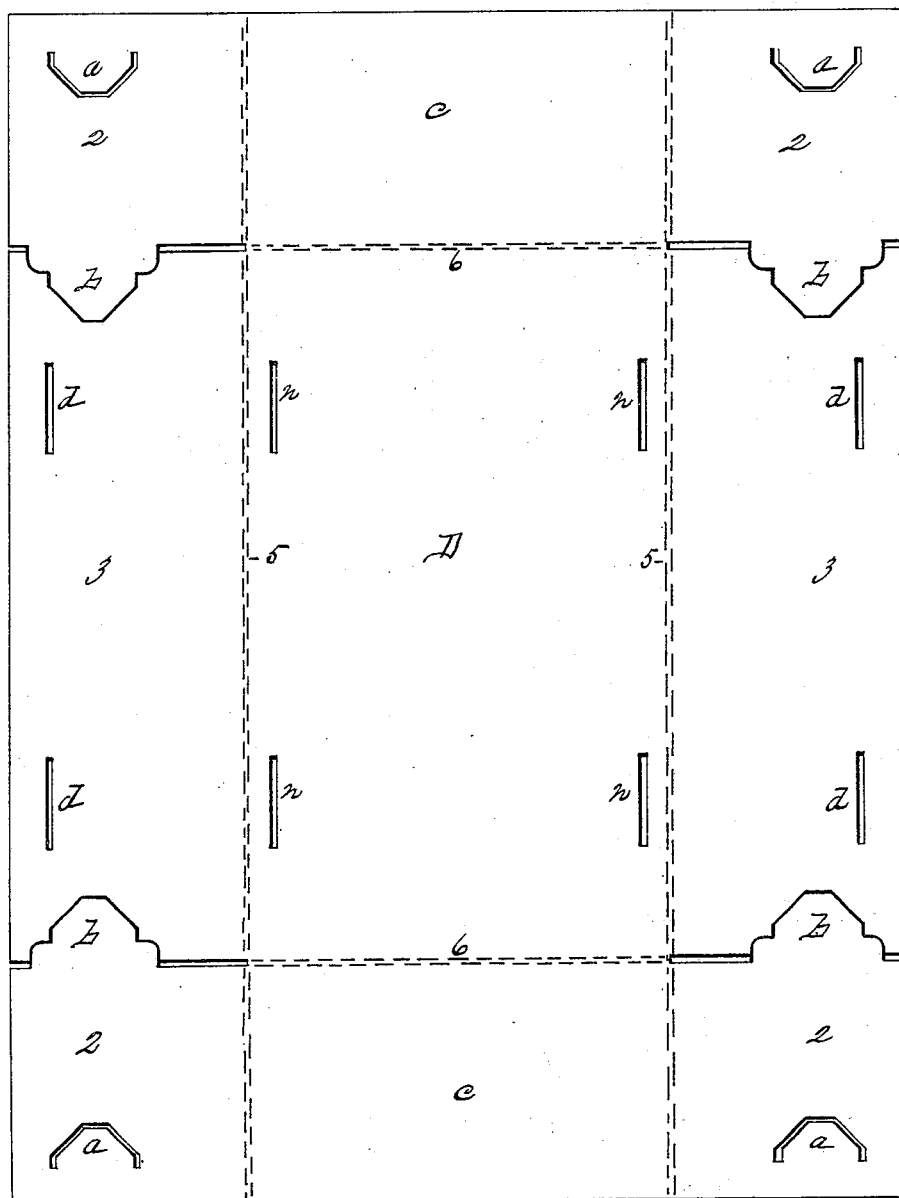


Fig. 1,

Witnesses,  
R. F. Hyde  
Wm. A. Chapin

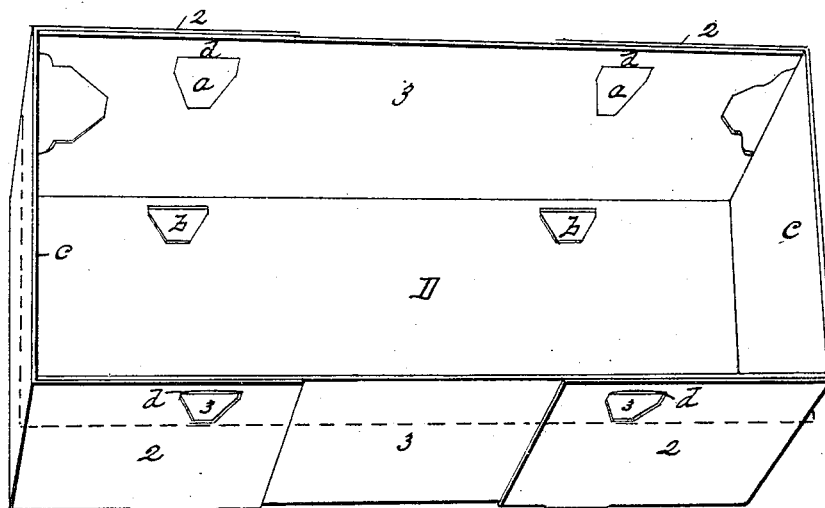
Inventor,  
P. E. BOWE  
By Henry A. Chapin  
att'y,

P. E. BOWE.  
KNOCKDOWN PAPER BOX.

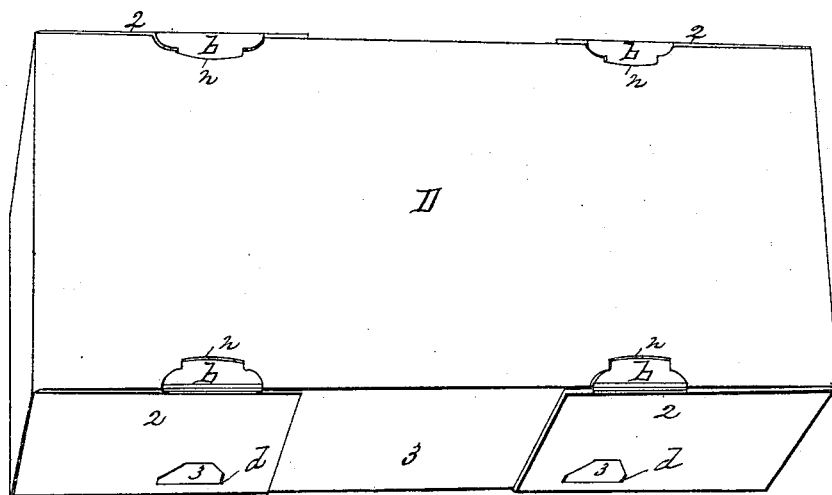
No. 262,201.

Patented Aug. 8, 1882.

*Fig II,*



*Fig III,*



Witnesses,  
R. F. Hyde  
Wm. H. Chapin

Inventor,  
P. E. Bowe,  
By Henry A. Chapin  
att'y.

# UNITED STATES PATENT OFFICE.

PATRICK E. BOWE, OF CHICOPEE, MASSACHUSETTS.

## KNOCKDOWN PAPER BOX.

SPECIFICATION forming part of Letters Patent No. 262,201, dated August 8, 1882.

Application filed June 26, 1882. (No model.)

*To all whom it may concern:*

Be it known that I, PATRICK E. BOWE, a citizen of the United States, residing at Chicopee, in the county of Hampden and State of Massachusetts, have invented new and useful Improvements in Knockdown Paper Boxes, of which the following is a specification.

This invention relates to improvements in that class of paper boxes known as "knockdown boxes," the object being to provide a box of that class which can be constructed practically without waste of material, and with such disposition of the same in the completed box as provides for uncommonly strengthened corners, and such an arrangement of locking-flaps as permits of rapidly setting up the box.

In the drawings forming part of this specification, Figure 1 illustrates the box-blank for constructing a box according to my invention. Fig. 2 is a box set up, ready for use. Fig. 3 is a similar view to Fig. 2, but showing the box inverted.

In the drawings, D is the bottom of the box and the central part of the blank.

5 5, 6 6 are the folding-lines at the junction of sides and ends with the part D and of the corner-flaps with the ends.

2 2 2 2 are the corner-flaps.

3 3 are the side, and c c are the end, parts.

30 a a a a are locking-flaps for the corner-flaps 2, as also are the flaps b b b b.

The locking-slits for the flaps a are designated by the letter d, and those for the flaps b by the letter n.

35 The blank, Fig. 1, from which the within-described box is made, is constructed by scoring, indenting, or otherwise suitably preparing the lines 5 and 6 upon a piece of cardboard of suitable size, so that the sides 3 3 and ends c c of the box may be easily turned

up at right angles to the bottom D, and also to permit of bending the corner-flaps 2 against the outside of the sides 3 after the latter have been turned up, as above described. The corner-flaps 2 are separated from the sides 3 by 45 a suitable cut from the edges of the blank inward to the lines 5, but cutting into the ends of the side pieces, 3 3, to form the flaps b, and a cut through each corner-flap leaves the flap a in each one thereof. Thus attached to each 50 flap 2 are two locking-flaps, a and b.

The box-blanks, made as above described and as shown in Fig. 1, is completed, ready for shipment, in a flat form and for use, and is set up, as represented in Figs. 2 and 3, by first 55 turning up the sides 3, then bending the ends against the ends of the latter, and inserting the locking-flaps a in the slits d and the flaps b in the slits n, as shown in the figures showing the set-up box.

A suitable cover for this box may be constructed by attaching to a suitable central part as much of the sides and ends of this box as is represented above the dotted line in Fig. 2, embracing therein the locking-flaps a; or a cover 65 embodying the entire construction of the body of the box may be used.

What I claim as my invention is—

A blank for a knockdown paper box, provided with the folding-lines 5 6, and consisting 70 of the central part, D, the side and end parts, 3 3 and c c, and the corner-flaps 2 2 2 2, each of said corner-flaps being provided with locking-flaps a and b, and said sides and central portions of said blank having the locking slits 75 d and n therein, all as set forth.

PATRICK E. BOWE.

Witnesses:

H. A. CHAPIN,

B. F. HYDE.