

(No Model.)

H. L. SUTHERLAND.

TRACE SPLICE.

No. 262,255.

Patented Aug. 8, 1882.

Fig. 1.

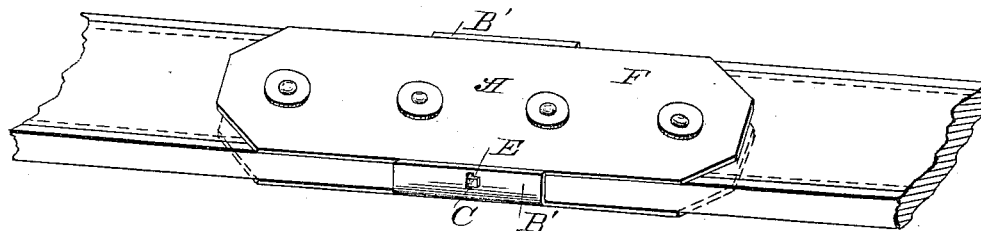


Fig. 2.

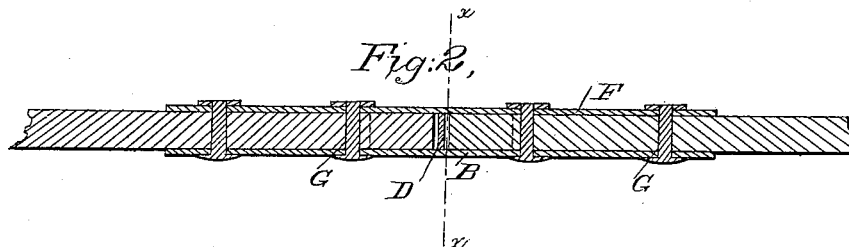
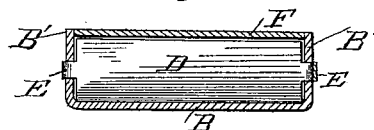


Fig. 3.



WITNESSES:

Ad. H. Dieterich
Jno. W. Blockett

INVENTOR.

Hugh S. Sutherland
by A. Snow & Co.
ATTORNEYS.

UNITED STATES PATENT OFFICE.

HUGH L. SUTHERLAND, OF CANTON, MISSISSIPPI.

TRACE-SPLICE.

SPECIFICATION forming part of Letters Patent No. 262,255, dated August 8, 1882.

Application filed March 10, 1882. (No model.)

To all whom it may concern:

Be it known that I, HUGH L. SUTHERLAND, of Canton, in the county of Madison and State of Mississippi, have invented certain new and useful Improvements in Trace-Splices; and I do hereby declare that the following is a full, clear, and exact description of the invention, which will enable others skilled in the art to which it appertains to make and use the same, reference being had to the accompanying drawings, which form a part of this specification.

Figure 1 is a perspective view. Fig. 2 is a longitudinal sectional view, and Fig. 3 is a vertical cross-section.

Corresponding parts in the several figures are denoted by like letters of reference.

This invention relates to devices for splicing traces and other straps, or for connecting the ends of leather straps; and it consists in certain improvements in the construction of the same, which will be hereinafter fully described, and particularly pointed out in the claims.

In the drawings hereto annexed, A represents my improved splice, which consists of a plate, B, made preferably of malleable iron, and provided for a portion of its length with centrally-located upturned flanges B'. The flanges B' have slots C to receive the ends E of a brace, D, which ends are reduced so as to pass through the slots, after which they are swaged down or clinched, so as to retain the said brace in position. The brace D also forms a partition, by which the splice-plate is divided into two sections of equal length.

F is a top or cap plate, adjustable between the flanges B'. Said cap-plate, as well as the

base-plate B, is provided with openings G for the reception of the connecting bolts or rivets.

The operation of my invention will be readily understood. The ends of the straps to be connected having been properly trimmed and squared, they are placed upon the base-plate B between the flanges B' B', and with their ends abutting against the partition D. The cap-plate F is then placed in position, holes drilled through the leather to register with the openings G, and the bolts or rivets are finally adjusted and secured.

Broken traces and other straps may be easily and conveniently mended with this device, rendering them almost as durable as new ones, and at a trifling expense. My improved splice is very simple and inexpensive, and is capable of being made very neat and ornamental.

Having thus described my invention, I claim and desire to secure by Letters Patent of the United States—

1. In a device for splicing traces, the flanged plate B, having partition D and openings G, in combination with the cap-plate F, having openings G, as set forth.

2. The plate B, having upturned flanges B', connected by a brace, D, forming a transverse partition, in combination with the cap-plate F and connecting bolts or rivets, as set forth.

In testimony that I claim the foregoing as my own I have hereto affixed my signature in presence of two witnesses.

HUGH LEWIS SUTHERLAND.

Witnesses:

A. H. COLEMAN,

A. J. SNEED.