

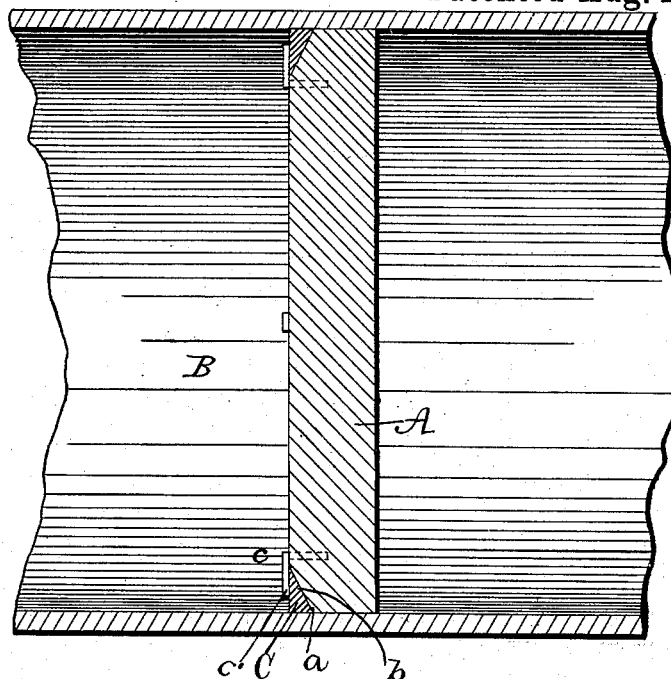
(Model.)

H. H. & H. J. KUENTZ.  
FOLLOWER FOR CHEESE HOOPS.

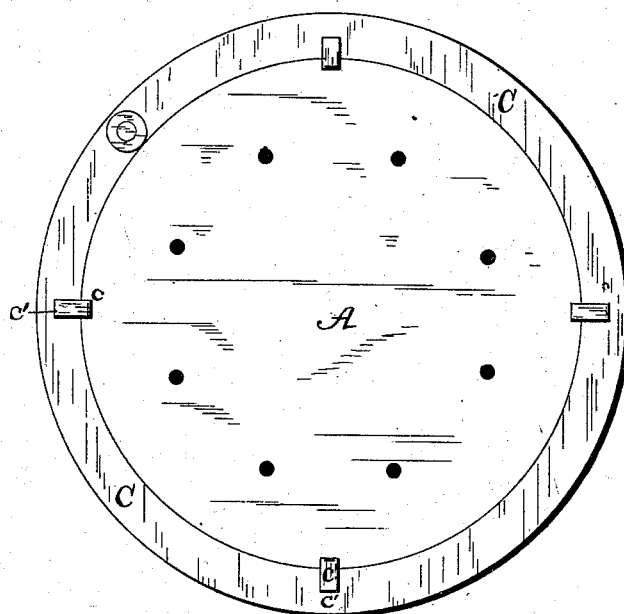
No. 262,955.

Patented Aug. 22, 1882.

*Fig. 1.*



*Fig. 2.*



*Attest:*

*J. M. Burnham,*  
*Harry Bernhard.*

*Inventors:*

*Herman H. Kuentz,*  
*Henry J. Kuentz,*  
*Per J. William Hester*  
*Attorney*

# UNITED STATES PATENT OFFICE.

HERMAN H. KUENTZ AND HENRY J. KUENTZ, OF SHEBOYGAN FALLS, WIS.

## FOLLOWER FOR CHEESE-HOOPS.

SPECIFICATION forming part of Letters Patent No. 262,955, dated August 22, 1882.

Application filed May 8, 1882. (Model.)

*To all whom it may concern:*

Be it known that we, HERMAN H. KUENTZ and HENRY J. KUENTZ, citizens of Sheboygan county, residing at Sheboygan Falls, in the county of Sheboygan and State of Wisconsin, have invented certain new and useful Improvements in Followers for Cheese-Hoops, of which the following is a specification, reference being had therein to the accompanying drawings, in which—

Figure 1 is a longitudinal section of a cheese-hoop and its follower embodying our improvements. Fig. 2 is a plan view of our follower.

The purpose of this invention is to provide against the escape around the edges of the follower of the curd while subjecting it to pressure by the action of the follower, in a manner to promote the durability of the packing of the follower and to prevent its discoloring the curd or cheese; and it consists of a follower having one side beveled at its outer edges, and affixed upon said bevel, so as to move down said bevel or incline, a packing-ring made of leather and skived or beveled itself to fit the same surface of the follower, with its outer surface standing about flush with the follower, substantially as hereinafter more fully set forth.

To carry out our invention we employ, as will be observed by reference to the accompanying drawings, a follower, A, adapted to work in the hoop B, of ordinary construction. The follower A has its inner side—that placed next to the curd—beveled at its outer edges to its circumference, as at *a*, forming an incline thereon.

C is the packing-ring, made of leather, to prevent premature wear and the discoloring the curd or cheese, as would be the case were it made of rubber, heretofore used because of

its expansible property. It is obvious that it will outwear the rubber, while possessing sufficiently the expansible and contractible properties of the rubber to cause it to serve as an equally efficient packing. The ends of the ring or packing are preferably united together by a rivet of copper or other suitable metal. The inner side of the packing-ring A is itself beveled, as at *b*, its surface tapering oppositely to that of the inclined or beveled surface of the follower upon which it rests, and thus enabled to move down said incline of the follower as pressure is exerted thereon by the action of the follower upon the curd, and tightly pack the follower at its point of contact with the hoop to effectively prevent the escape thereof of the curd. To permit the free action of the packing-ring C it is confined upon the follower A by holding devices or fastenings *c*, any number of which may be used; but usually only four are required, driven into the follower and having right-angled heads *c'*, which rest on but do not clamp the packing-ring resting flush with the surface of the follower.

Having thus fully described our invention, we claim and desire to secure by Letters Patent—

The follower A, having one side beveled at its outer edge, as at *a*, combined with the beveled leather packing-ring C and the holding devices *c*, having right-angled head *c'*, substantially as and for the purpose set forth.

In testimony whereof we affix our signatures in presence of two witnesses.

HERMAN H. KUENTZ.  
HENRY J. KUENTZ.

Witnesses:

A. C. PRESCOTT,  
L. D. HARVEY.