

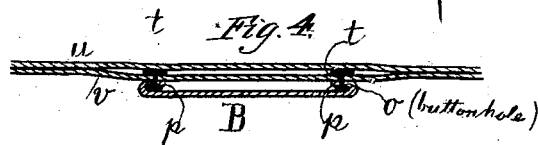
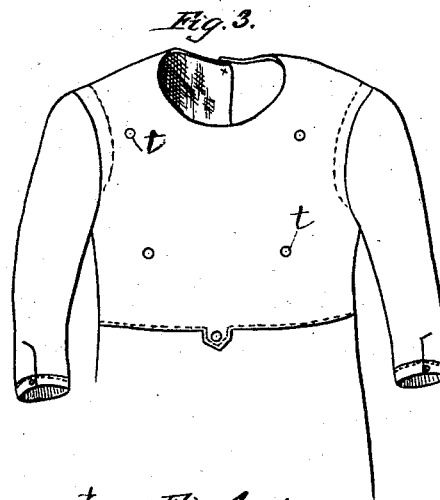
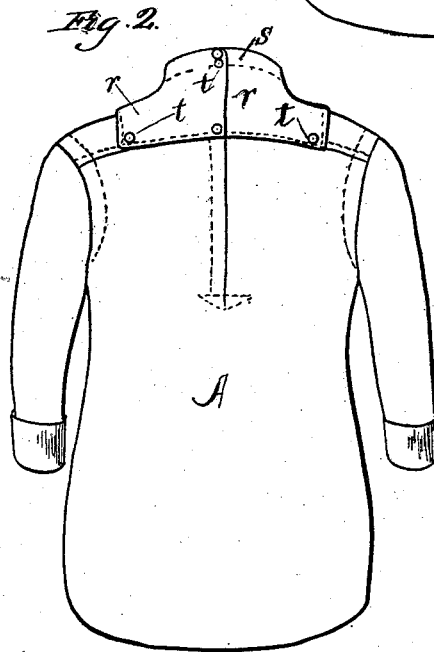
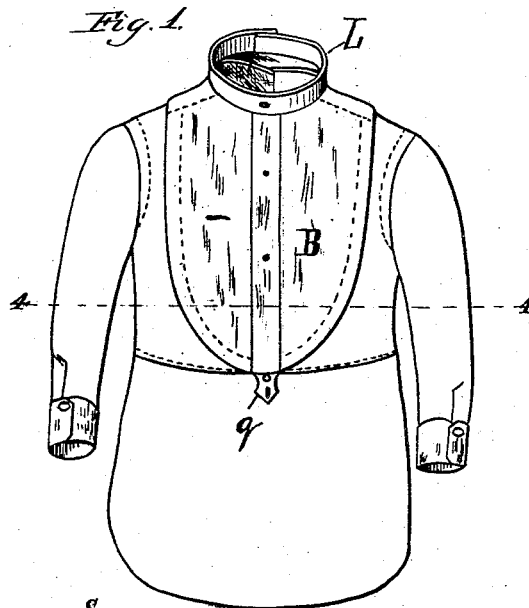
(No Model.)

C. AXELL.

SHIRT.

No. 264,506.

Patented Sept. 19, 1882.



WITNESSES.
F. B. Townsend
C. C. Luthicum.

INVENTOR-
Charles Axell,
By R. C. Dyrenforth,
Attorney

UNITED STATES PATENT OFFICE.

CHARLES AXELL, OF CHICAGO, ILLINOIS.

SHIRT.

SPECIFICATION forming part of Letters Patent No. 264,506, dated September 19, 1882.

Application filed March 11, 1882. (No model.)

To all whom it may concern:

Be it known that I, CHARLES AXELL, a citizen of the United States, residing at Chicago, in the county of Cook and State of Illinois, have invented certain new and useful Improvements in Shirts; and I hereby declare the following to be a full, clear, and exact description thereof, reference being had to the accompanying drawings, of which—

Figure 1 is a front elevation of a shirt provided with my improvements; Fig. 2, a rear elevation of the same; Fig. 3, a front elevation of the body of the shirt; and Fig. 4 a cross-section of the front portion of the shirt, taken on the line 4 4 of Fig. 1.

My invention relates to shirts of the class which have detachable bosoms, and which are designed especially for mechanics and others whose work is of a character which renders the removal of their shirt-bosoms during working-hours desirable to prevent their becoming crumpled and soiled.

My invention consists, first, in the construction of the body of the shirt, the same being made without a neckband, open at the back or front, and with the upper half of its front portion of two layers of fabric, the outer layer being provided with buttons or with button-holes to receive insertible buttons, and the rear part of the shoulders and neck being also provided with buttons to permit the securing in place of the removable bosom; and it consists, secondly, in the construction of the removable bosom, the same being formed with a neckband, and with a yoke provided with button-holes to secure it to the buttons on the shoulders, and with an inner fly at each side, provided with button-holes to secure it to the body of the shirt, all as hereinafter more fully set forth.

In the drawings, A is the shirt, formed without a neckband, as shown, and having its upper front portion formed of two layers, *v* and *u*, the outer layer, *v*, being provided with buttons *t* in the proper position for attaching the bosom. These buttons may be either permanently attached or inserted in button-holes

provided for the purpose, after the manner of collar and cuff buttons. The rear part of the yoke is also provided with buttons *t* for the attachment of the yoke of the removable bosom.

B is the removable bosom, formed with a neckband, *s*, opening at the back, and with a yoke, *r*, provided with button-holes in proper positions for the buttons *t* on the yoke of the shirt-body. It is also provided at its lower extremity with a tag, *q*, to button to the drawers, the tag having an extra button-hole to button to the shirt-body.

Secured to the inner face of the bosom, at each edge thereof, by a row of stitches, and projecting laterally inward from the edge, is a fly, *p*, provided with button-holes *o* to secure it to the buttons *t* on the shirt-body. Of course fewer buttons are needed for a full-chested than for a hollow-chested person. Provision may be made for an extreme case of the latter nature, and as many buttons employed as the particular case demands.

It is preferred to have the wristbands open on the upper side of the wrist, as shown in the drawings, instead of the lower.

What I claim as new, and desire to secure by Letters Patent, is—

1. A shirt-body open at the back or front, without a neckband, and having the upper half of its front portion formed of two layers of fabric, the outer layer thereof, and also the rear part of the yoke, being provided with buttons or button-holes for the attachment of a shirt-bosom, substantially as described.

2. The attachable bosom B, provided with a neckband, *s*, opening at the back, and with a yoke, *r*, having button-holes *o* to permit it to be secured by means of buttons to the rear part of the yoke of the shirt, and provided also, on the inner face of the lateral margin, with a fly, *p*, having button-holes *o* to permit it to be secured to buttons on the shirt, substantially as described.

CHARLES AXELL.

In presence of—

C. C. LINTHICUM,
WM. H. DYRENFORTH.