

(No Model.)

N. WARRELL.

CHURN DASHER.

No. 266,406.

Patented Oct. 24, 1882.

Fig. 1.

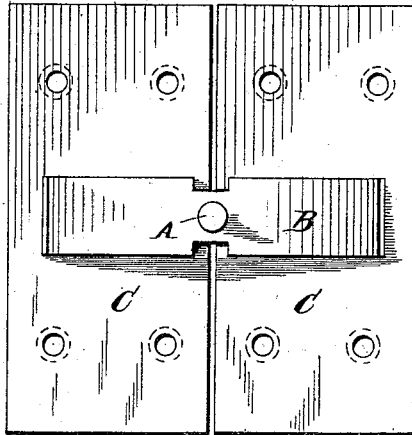


Fig. 2.

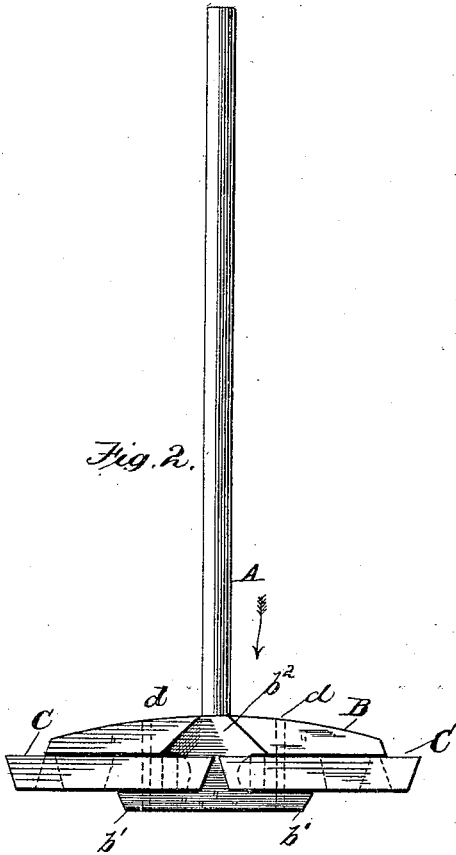


Fig. 3.

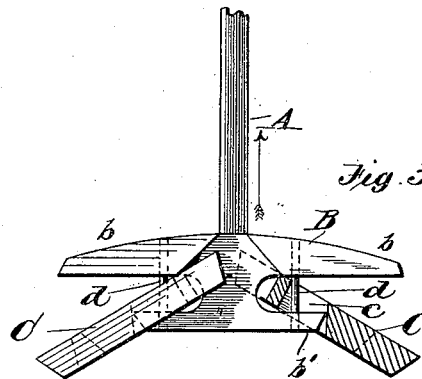
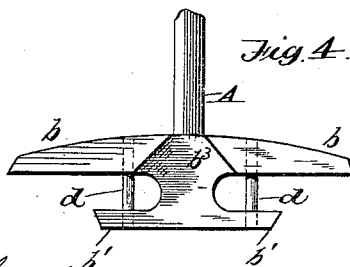


Fig. 4.



WITNESSES:

W. H. Knight,
Harry Bernhard

INVENTOR

Nicholas Warrell
per *Edson M. S.*
Attorney, S.

UNITED STATES PATENT OFFICE.

NICHOLAS WARRELL, OF FARRAGUT, IOWA.

CHURN-DASHER.

SPECIFICATION forming part of Letters Patent No. 266,406, dated October 24, 1882.

Application filed August 24, 1882. (No model.)

To all whom it may concern:

Be it known that I, NICHOLAS WARRELL, a citizen of the United States of America, residing at Farragut, in the county of Fremont and State of Iowa, have invented certain new and useful Improvements in Churn-Dashers, of which the following is a specification, reference being had therein to the accompanying drawings.

10 The object of my invention, which relates to churn-dashers, is to provide a rigid peculiarly-constructed cross-head and pivoted blades or plates, which, as they are raised, will shed the cream, and as they are lowered will present
15 their full surfaces at right angles to the depth of the cream by the resistance of the cream to the descent of the dasher therein. Pivoted blades broadly are not new; but my improvements consist in the means for securing said
20 blades to a cross-head, which will be herein-after more fully described, and particularly pointed out in the claim.

In the drawings, Figure 1 is a top view. Fig. 2 is a side elevation, showing the parts in the position they assume when the dasher is descending. Fig. 3 is a similar view, but showing the blades in the position they assume on the upward stroke and with one of the blades partly broken away; and Fig. 4 is a detached
30 side elevation of the cross-head.

Like letters of reference denote like parts in each of the figures.

Referring to the drawings, A is the staff, which is rigidly secured to the cross-head B,

to which is pivoted the blades CC by means 35 of two pintles, *d d*, which pass through openings *c c* in the blades, and are permanently secured to the upper and lower arms of the cross-head. The outer wall of each opening is preferably beveled, and each blade has its inner 40 edge cut away, as shown in dotted lines in Fig. 3, to permit the inner edges of the blades to lap the shank of the cross-head and come nearly together. The upper arms, *b*, of the cross-heads B are longer and broader than the 45 lower ones, *b'*, the sides of the latter and the shank *b²* being flush with the faces of slots *b³* in the form of a truncated frustum of a cone on each side of the cross-head. The blades 50 can be perforated, if desired.

What I claim, and desire to secure by Letters Patent, is—

The cross-head having the upper and lower arms, the former being slotted, as described, and the pintles for securing the blades, in combination with the blades having the openings 55 for the passage of the pintles to allow vertical play of the blades, the latter also having recesses to permit them to lap the shank of the cross-head, as and for the purpose shown and 60 described.

In testimony whereof I affix my signature in presence of two witnesses.

NICHOLAS WARRELL.

Witnesses:

GEO. C. FLEMING,
J. W. TRULLINGER.