

(No Model.)

A. H. CAMPBELL.

AUTOMATIC OILER FOR LOCOMOTIVE ENGINES.

No. 266,768.

Patented Oct. 31, 1882.

Fig. 1.

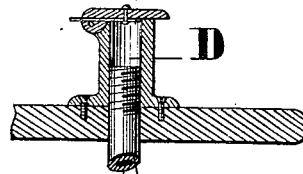


Fig. 2.

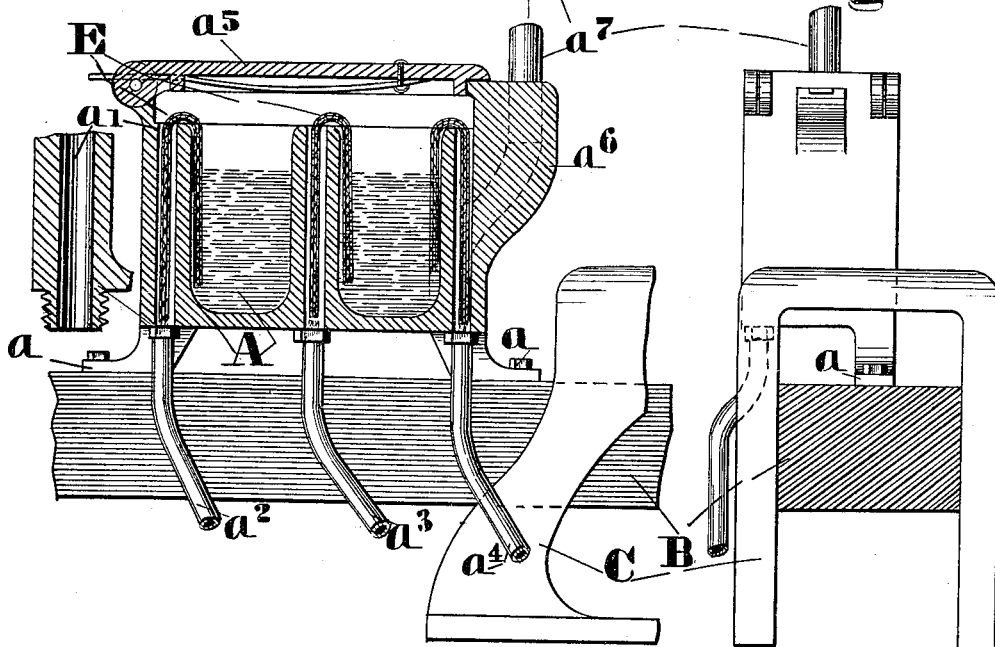
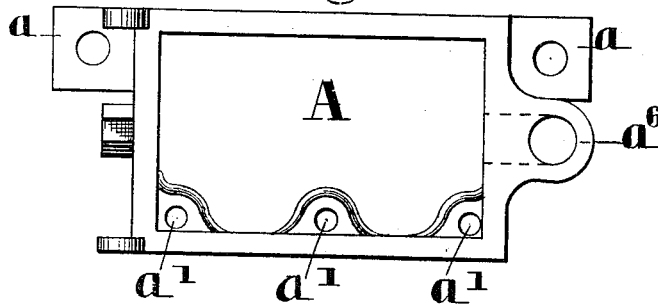


Fig. 3.



WITNESSES:

J. S. West
Wm. T. Emerson

INVENTOR:
A. H. CAMPBELL,
BY *H. W. Beadle & Co*

ATTYS

UNITED STATES PATENT OFFICE.

A. HAMILTON CAMPBELL, OF WAYNESBOROUGH, PENNSYLVANIA.

AUTOMATIC OILER FOR LOCOMOTIVE-ENGINES.

SPECIFICATION forming part of Letters Patent No. 266,768, dated October 31, 1882.

Application filed September 21, 1882. (No model.)

To all whom it may concern:

Be it known that I, A. HAMILTON CAMPBELL, of Waynesborough, county of Franklin, and State of Pennsylvania, have invented new and useful Improvements in Automatic Oilers for Locomotive-Engines; and I do hereby declare that the following is a full and exact description of the same, reference being had to the accompanying drawings, and to the letters of reference marked thereon.

This invention is especially designed for lubricating regularly and automatically certain of the bearing parts of locomotive-engines which are inaccessible when the engine is in motion, such as the shoes, the wedges, and the boxes of the driving-axles; and it consists in a specific combination of parts fully described hereinafter.

In the drawings, Figure 1 represents a sectional elevation of my improved oiler; Fig. 2, an end view of the same, and Fig. 3 a plan view of the oil-box proper with the cover removed.

To enable others skilled in the art to make my improved oiler, I will proceed to describe fully the construction of the same.

A represents a box or cup of proper form, having the legs or brackets a , by means of which it is secured to the frame B of the locomotive near the stirrup C, as shown.

a' a' a' represent tubes cast in the box A, the lower ends of which extend through the bottom of the latter, and are provided with threads adapted to take the pipes a^2 a^3 a^4 , extending away to any desired point, as shown. The upper ends of the tubes a' , it will be observed, open into the oil-chamber near the top of the same.

a^5 represents a spring-lid, by means of which access to the interior of the box is readily attained when desired.

a^6 represents a hollow projection upon the side of the box, and a^7 a pipe leading from the same to the oil-cup D, located on the foot-board of the engine, as shown.

E represents a wick, the short end of which lies in the oil contained in the chamber of box A, and the long end of which extends down the tube a' , as shown.

The operation will be readily understood. The wick having been properly inserted in place, and the box A having been properly supplied with oil, the proper parts will be automatically and uniformly lubricated through the pipes a^2 a^3 a^4 by the wicks E acting as siphons. The amount delivered during any given period may be determined by the amount of twist given to the wick. The oil-box A may be readily supplied with oil when the engine is in motion by introducing the same into the cup D. When the oiler is once fixed in its proper place the desired results are obtained without the necessity of frequent attention. By means of the lid a^5 ready access is obtained to the interior of the cup when desired.

Having thus fully described my invention, what I claim as new, and wish to secure by Letters Patent, is—

The box A, having the tubes a' a' , lid a^5 , and projection a^6 , in combination with the pipe a^7 and oil-cup D, and the pipes a^2 a^3 a^4 , as described.

This specification signed and witnessed this 4th day of September, 1882.

A. H. CAMPBELL.

Witnesses:

S. LESLIE LECRON,
D. C. UNGER.