

H. L. FLEMING.

SASH FASTENER.

No. 301,582.

Patented July 8, 1884.

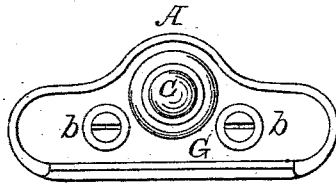


Fig. 1.

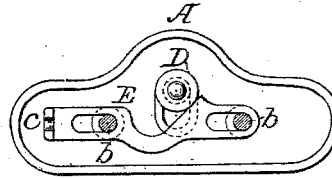


Fig. 2.

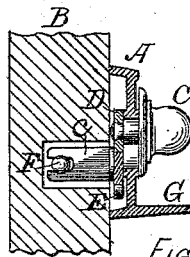


Fig. 3.

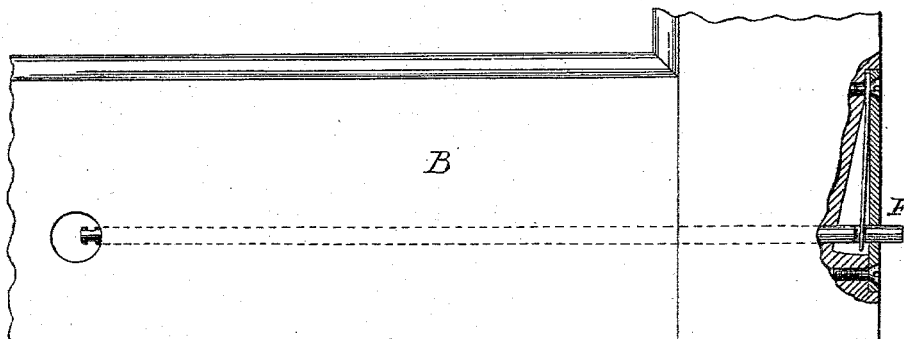


Fig. 4.

ATTEST-

Joseph Seeberger.
L. R. Beckley.

INVENTOR-

Henry Lisle Fleming.

UNITED STATES PATENT OFFICE.

HENRY L. FLEMING, OF HUDSON, NEW YORK.

SASH-FASTENER.

SPECIFICATION forming part of Letters Patent No. 301,582, dated July 8, 1884.

Application filed June 9, 1879.

To all whom it may concern:

Be it known that I, H. LISLE FLEMING, a citizen of the United States, and now a resident of the city of Hudson, in the county of Columbia and State of New York, formerly a resident of the city of Elizabeth, in the county of Union and State of New Jersey, have invented a new and useful Improvement in Sash Latches or Fasteners, being intended as an improvement upon a device for which Letters Patent of the United States No. 167,822 were issued to me September 21, 1875, as assignee of entire interest of Edward W. Brettell, also a resident of the latter-named city, county, and State, and of which said improvement the following is a specification.

This improvement consists in substituting for the combination of a flat plate or bar extending from center to one side of sash, a sliding knob, and a V-shaped slide rigidly attached to and operating in connection with a spring-bolt, as in the device previously patented, the combination of a centrally-affixed recessed plate, a sliding knob, a detachable V-shaped slide, and a separately-adjustable spring-bolt, as hereinafter more fully described, my object being to admit of readier attachment of latch to sash, and to avoid the mutilation of wood-work required when former device is used.

In the accompanying drawings, Figure 1 is an outer view of my improved device. Fig. 2 is an inner view, and Fig. 3 is a transverse sectional view. Fig. 4 is a sectional view of the lower part of a sash with the spring-bolt in place.

Similar letters of reference in each indicate corresponding parts.

A represents the recessed plate, which may be centrally affixed to the lower rail of sash, and has formed therein a vertical slot to receive shank of a sliding knob, C, provided inside of said plate with the guide or follower D.

By E is represented the V-shaped slide slotted longitudinally, so as to reciprocate freely beneath plate, between same and sash upon shanks of screws used to secure said plate, or upon studs projecting inwardly therefrom, which may be furnished for that purpose, said slide being provided with forked tongue *c*, projecting inwardly at right angles with same, so as to engage with notched end of spring-

bolt F, which extends lengthwise through said lower rail to side of sash.

G represents the usual pull-hook or lift, which may be attached directly to plate A, or be secured independently to the sash beneath, as most convenient.

The operation of this improved latch is precisely similar to that of device previously patented, so far as the mere mechanical movement of parts is concerned—viz., the bolt being withdrawn through agency of knob C, follower D, and slide E, and returned automatically by action of spring; but in the application of same it differs insomuch that the bolt and spring may first be placed in position separately from other working parts by insertion through small hole bored lengthwise in rail from one side to center of sash, the V-shaped slide being next located by engagement of forked tongue with notched end of bolt, a recess being formed in center of rail, communicating with above-named orifice to admit of this connection. The recessed plate, having knob and follower previously attached, may then be placed over slide, so that follower may bear upon inclined face of same, and secured to sash by screws, the shanks of which pass through longitudinal slots in slide for the purpose aforesaid. By this method of attachment the objectionable gouging out of sash necessitated with former device having flat plate, and rigidly connected with working parts, is avoided.

I do not claim, broadly or separately, recessed plates or the tongue-connection between slide and bolt; but

What I do claim, and desire to secure by Letters Patent, as an improvement on said former device, previously patented to me as assignee of Edward W. Brettell, as hereinbefore stated, is—

The combination of the centrally-affixed recessed plate A, sliding knob and follower C D, longitudinally-slotted detachable V-shaped slide E, provided with tongue *c*, projecting inwardly at right angles with same, and the separately-adjustable notched spring-bolt F, all constructed and arranged substantially as shown and described, for the objects herein set forth.

Witnesses: HENRY L. FLEMING.
JOHN B. HALCOTT,
PATRICK J. FLYN.