

(No Model.)

H. W. HOLLY.
PROTECTOR FOR CHIMNEYS.

No. 302,404.

Patented July 22, 1884.

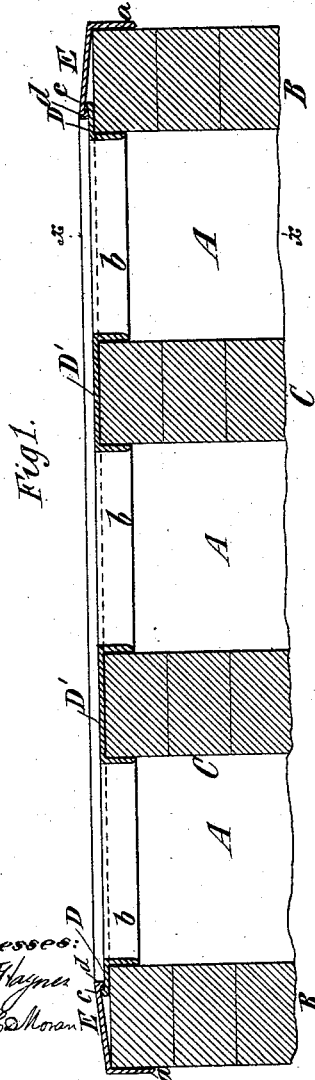
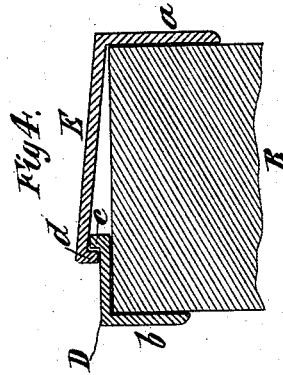
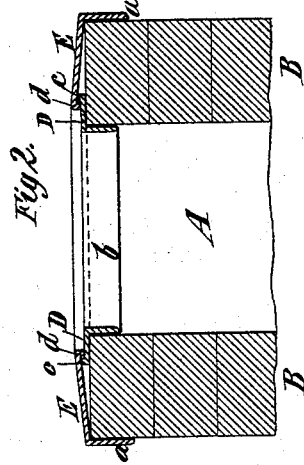
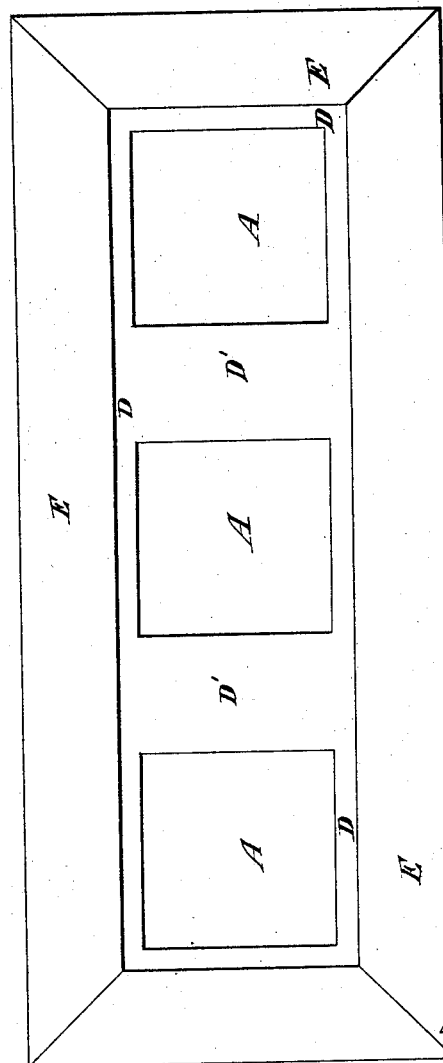


Fig. 3.



Witnesses:
Thos. Wagner
Edw. L. Moran

Inventor:
H. W. Holly
by his atty
R. M. Brown

UNITED STATES PATENT OFFICE.

HENRY W. HOLLY, OF BROOKLYN, NEW YORK.

PROTECTOR FOR CHIMNEYS.

SPECIFICATION forming part of Letters Patent No. 302,404, dated July 22, 1884.

Application filed May 7, 1883. (No model.)

To all whom it may concern:

Be it known that I, HENRY W. HOLLY, of the city of Brooklyn, in the county of Kings and State of New York, have invented a new and Improved Protector for Chimneys, of which the following is a specification.

My invention relates to the class of chimney-protectors which consists of a metal cap adapted to cover the top of a chimney and the inner and outer sides or walls thereof adjacent to the top.

The invention consists in a chimney protector or cap which is composed of two frames combined in a novel manner, as hereinafter particularly described, whereby provision is afforded for their free expansion and contraction independently of one another.

In the accompanying drawings, Figure 1 is a sectional elevation of the top portion of a three-flue chimney surmounted by my protector. Fig. 2 is a section on the dotted line *x x*. Fig. 3 is a plan of the protector, and Fig. 4 is a sectional view of one of the walls of a chimney and a portion of my protector on a larger scale.

Similar letters of reference designate corresponding parts in all the figures.

A A A designate the three flues of a chimney, built of brick in the usual way.

B designates the exterior walls of the chimney, and C the dividing walls or partitions which form the several flues.

The invention is applicable to chimneys having one or any greater number of flues. The protector is composed of a cap portion or plate, which covers the top or flat surface of the chimney, and inner and outer flanges, *a b*, which lap upon or extend downward over the outside of the wall B and the inner sides of the several flues A. The cap portion of the protector is composed of two parts or frames, D E. The inner part, D, consists simply of a rectangular frame having cross-bars D' covering the walls C, and provided with flanges *b*, which project downward therefrom and lap

on the inner surfaces of the flues. The outer part, E, is a rectangular frame, which laps over the frame D at a point between the inner and outer sides of the chimney and pitches or is inclined outward, so as to shed water freely. The part or frame E is furnished with the flange *a*, which projects downward and laps on the exterior surface of the wall B. The outer edge or marginal portion of the frame D is provided with an upwardly-projecting rib or flange, *c*, and the inner edge or marginal portion of the frame E is provided with a downwardly-projecting rib or flange, *d*. The two ribs or flanges *c d* form a breakwater and prevent rain from driving in under the frame E. The ribs or flanges *c d* are also advantageous, because, if the inner frame, D, should break, its pieces would be held in place and prevented from falling down the chimney.

It will be observed that the inner and outer frames, D E, can expand and contract independently of each other, and sufficient play is left between the ribs *c d*, as shown in Fig. 4, to admit of such expansion of the metal as might occur from any excessive heat on the inside, such as would result from the chimney getting on fire.

What I claim as my invention, and desire to secure by Letters Patent, is—

The chimney-protector consisting of the frame D, provided with the inner flange, *b*, and the upwardly-projecting rib or flange *c*, and the frame E, provided with the outer flange, *a*, and downwardly-projecting rib or flange *d*, the said frames being combined as herein described, and the ribs or flanges *c* and *d* forming a breakwater on the top of the chimney, substantially as and for the purpose specified.

HENRY W. HOLLY.

Witnesses:

FREDK. HAYNES,
ED. L. MORAN.