

(No Model.)

M. MEYER.
HORSE COLLAR.

No. 302,578.

Patented July 29, 1884.

Fig. 1.

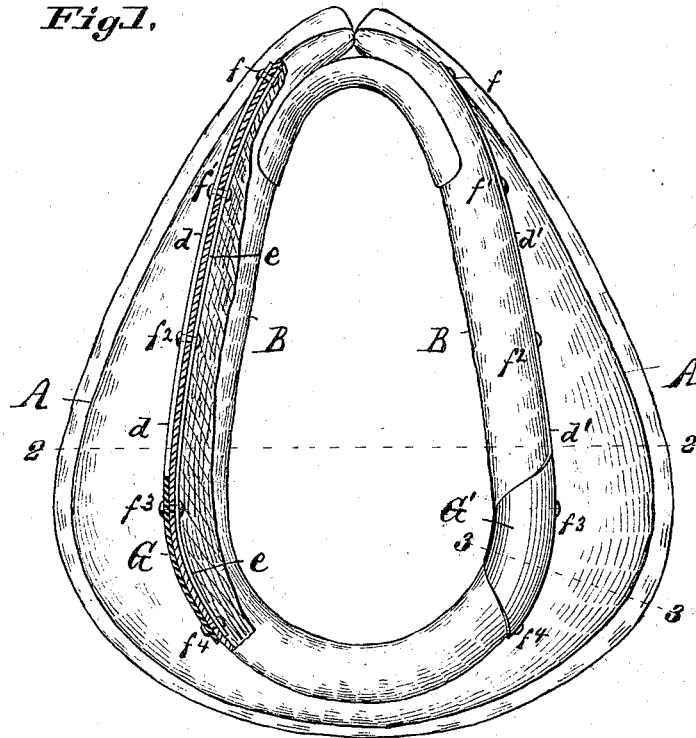


Fig. 2.

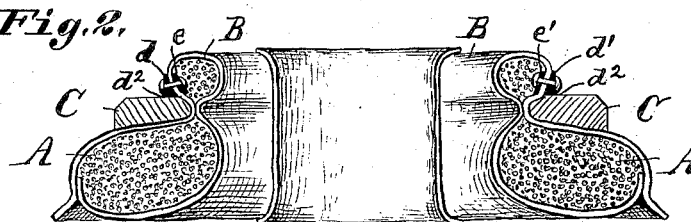
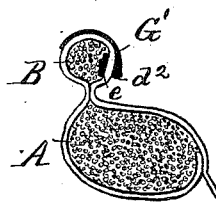


Fig. 3.



Attest
Charles Pickles
John W. Hertzel.

Inventor:
Michael Meyer
per
Hertzel & Co
Atty's

UNITED STATES PATENT OFFICE.

MICHAEL MEYER, OF ST. LOUIS, MISSOURI.

HORSE-COLLAR.

SPECIFICATION forming part of Letters Patent No. 302,578, dated July 29, 1884.

Application filed April 14, 1884. (No model.)

To all whom it may concern:

Be it known that I, MICHAEL MEYER, a citizen of the United States, residing at St. Louis and State of Missouri, have invented a new and useful Improved Horse-Collar, of which the following is a specification.

My invention relates to improvements in horse-collars, in which the neck-roll is provided with means to better retain and hold the hames in proper position; and the objects of my improvements are to provide the neck-roll with a simple, effective, economical, and reliable hame-hold; also, to overcome the wear and tear and destruction of the neck-roll and collar by the friction of the breast-chain, and otherwise render the horse-collar more durable and serviceable.

The claims are referred to for statement of invention.

Similar letters refer to like parts in the different figures of the drawings, in which—

Figure 1 shows my improved horse-collar, one side of the neck-roll being shown in section to better illustrate the construction, as well as manner of fastening the metal hame-hold to the neck-roll. Said figure also shows the protectors or metal plates lapping over the leather of the neck-roll, near bottom portion thereof. Fig. 2 is a cross-section taken on line 2 2. Fig. 3 is a detail cross-section on line 3 3, to show the metal plate protecting the leather of the neck-roll.

A represents the body or shoulder cushion of the collar.

B represents the neck-roll.

As ordinarily, the hames C are fitted on each side of the neck-roll, (see Fig. 2,) and in order to retain said hames in a firm position my invention is as follows: I provide a hame-hold of metal bars, between which and the cushion the hames are placed, and it is the solid metal shoulder on each side of the neck-roll, extending nearly the whole length of the hames, that retains the latter firmly in place on the collar. My hame-hold therefore consists of two metal bars, $d d'$ —one for each side of the neck-roll, and of such length as to extend from near top to bottom portion of the neck-roll, as indicated in the drawings.

These metal bars $d d'$ are shaped in cross-section as shown in Fig. 2, to specially have or present the thick, strong, and reliable shoulder-face at d^2 , against which the hames C are held fast. The bevel or inner face of the bars $d d'$ face the leather, while the outer face of said bars conforms as much as possible to the outside contour of the neck-roll. The manner of fastening these hame-holds or metal bars $d d'$ is as follows: I provide the inside of the neck-roll (before same is stuffed) with the respective inner metal bars, $e e'$ —one for each side, and preferably of the same length as the hame-holds. (See Figs. 1 and 2.) I next, by rivets at $f f' f^2 f^3 f^4$, fasten the outer hame-holds, $d d'$, to the inside flat metal bars, $e e'$. For this purpose said rivets pass through both the outer and inner metal bars, also through the leather, as shown.

The metal that I use is soft metal—such as malleable iron or brass—so that when the neck-roll is stuffed and put into shape the said metal bars can be made to curve and suit the contour of the neck-roll, as shown.

G G' represent the metal protectors to prevent the contact of the breast-chain from wearing away the leather of the neck-roll and exposing its stuffing. These protectors G G' are simply metal plates that can be cast to form parts of each of the metal hame-holds $d d'$, as indicated, or when cast separate are attached to the neck-roll by rivets. As shown, these metal protectors or plates are shaped to suit the contour of the neck-roll, lapping over same at those points where the same is subjected to the wear or contact of the breast-chain, one end of which connects to the ring on the hame, while the other end of the chain is attached to the tongue of the wagon.

What I claim is—

1. In combination with the neck-roll of a horse-collar, the hame-holds $d d'$ —one for each side—each consisting of metal and having the shoulder-face d^2 , substantially as and for the purposes set forth.

2. The improved horse-collar, consisting of the body or cushion A, its neck-roll B, the latter provided with metallic hame-holds on

each side, each being an outer bar, d d' , riveted to the neck-roll and its inside metal bars, e e' , substantially as and for the purposes set forth.

- 5 3. The combination of the body or cushion A, its neck-roll B, provided with hame-holds d d' , inner bars, e e' , the said parts riveted

together, and the metal plates or protectors G G', substantially as and for the purposes set forth.

MICHAEL MEYER.

Witnesses:

WILLIAM W. HERTHEL,
JOHN W. HERTHEL.