

(No Model.)

S. SMYTH.
STOVE PIPE FASTENER.

No. 302,674.

Patented July 29, 1884.

Fig. 5.

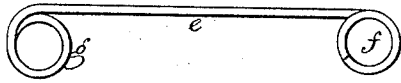


Fig. 1.

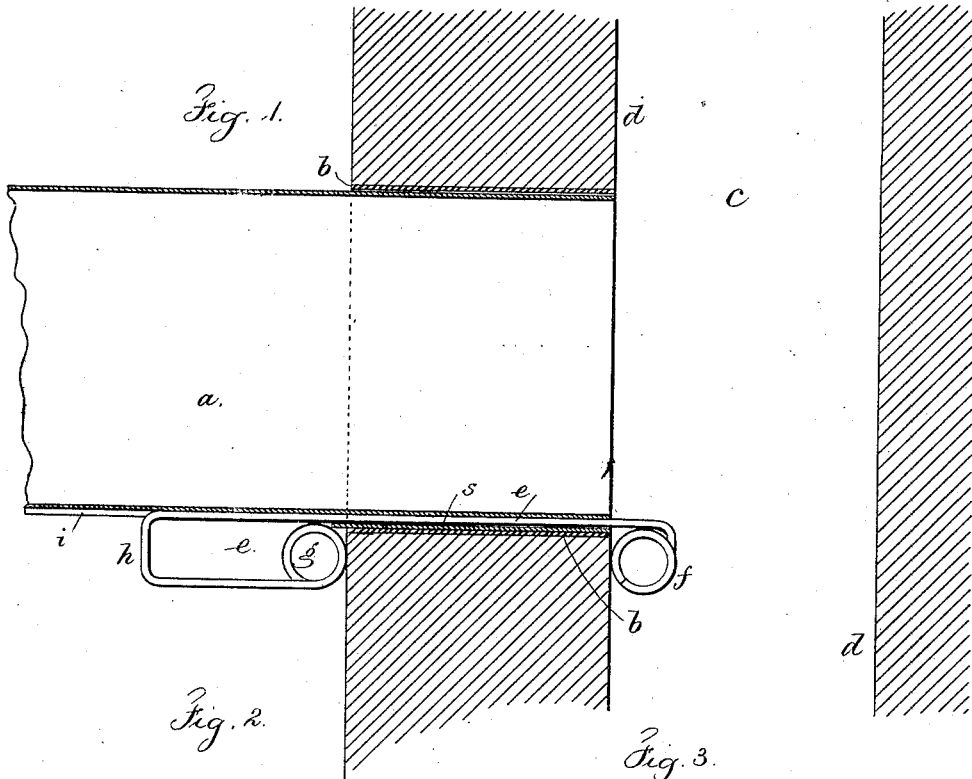


Fig. 2.

Fig. 3.

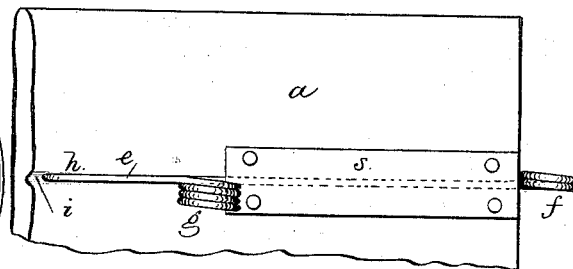
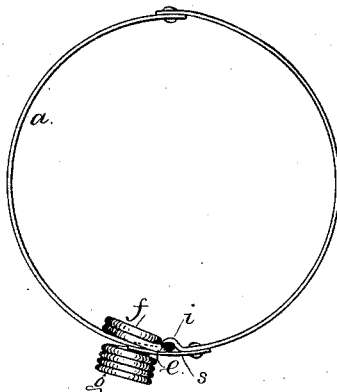
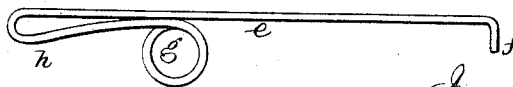


Fig. 4.



Witnesses

Chas. H. Smith
J. Staley

Inventor.

Samuel Smyth
per Lemuel W. Serrell

att.

UNITED STATES PATENT OFFICE.

SAMUEL SMYTH, OF PITTSBURGH, PENNSYLVANIA.

STOVE-PIPE FASTENER.

SPECIFICATION forming part of Letters Patent No. 302,674, dated July 29, 1884.

Application filed December 29, 1883. (No model.)

To all whom it may concern:

Be it known that I, SAMUEL SMYTH, of Pittston, in the State of Pennsylvania, have invented an Improvement in Stove-Pipe Fasteners, of which the following is a specification.

Stove-pipes are usually inserted into a thimble of metal or earthenware built into the chimney. If the stove-pipe is thrust in too far, it obstructs the chimney-flue, and the draft through the stove-pipe is also lessened. If the pipe is not secured to the thimble, it is liable to become disconnected, especially when exposed to vibration, such as usually occurs from walking upon the floor where the stove sets. Efforts have been made to fasten the stove-pipe with a wire; but the same is not well adapted to the differing thicknesses of brick-work, and cannot easily be disconnected for removing the stove-pipe.

My invention relates to a fastening-wire connected to the stove-pipe, and having two projections, one of which passes inside the inner end of the thimble, and the other passes outside the outer end of the thimble, the fastening being held so that it may receive nearly a half-revolution, in order that the inner projection may be turned back out of the way in entering or withdrawing the pipe, or turned down at the end of the thimble within the chimney, so as to hold the pipe in its place.

In the drawings, Figure 1 is a section representing the pipe and fastening in place. Fig. 2 is an end view of the pipe and fastening. Fig. 3 shows the under side of the pipe. Fig. 4 is the fastening detached, with a portion of the wire folded back upon itself; and Fig. 5 shows the fastening device with only a coil at each end.

The pipe *a* is of any desired size, and the thimble *b*, of sheet metal, terra-cotta, or earthenware, is built into the chimney. *c* is the flue, and *d* is the brick-work of the same.

The wire fastening *e* is provided with a coiled or hooked end, *f*, that is adapted to be passed into the flue at the inner end of the stove-pipe thimble, and said fastening *e* has also the coil *g*, to rest against the chimney-sur-

face. The wire *e* is folded back upon itself, as at *h*, so that the distance between the parts *f* and *g* may be varied by bending the wire at a different place or by coiling up or uncoiling the helix or coil *g*. The body portion of the wire *e* is fastened to the pipe *a* preferably by bending into such pipe a groove or channel at *i*, laying such wire *e* thereinto, then covering the same with a small plate, *s*. This allows the parts to be partially revolved, so that the coil *f* is out of the way when the stove-pipe is introduced into the thimble. Then the fastening is partially turned the other way, the parts assume the position shown in Fig. 1, so that the fastening secures the stove-pipe within the thimble and prevents it moving in either direction; hence the stove-pipe cannot slip out of the thimble or pass too far into the flue, and to take the pipe down it is only necessary to turn the fastening around into the position shown in Fig. 2, so that the coil end *f* is out of the way for removing or inserting the pipe.

I do not claim a wire connected with the pipe and having a hook at the inner end capable of being turned to hook behind the brick-work, as this has been used with a separate bar connected with the pipe and reaching across to the back of the flue. Neither do I claim a metallic strip independent of the pipe laid into the flue-hole before the pipe is inserted, and afterward wired to such pipe, as this wire has to be separately fastened each time the pipe is removed.

I claim as my invention—

The combination, with the stove-pipe, of a wire having a hook at one end adapted to pass inside the brick-work, and a projection at the other end for the face of the chimney, and a plate or clip connecting the wire to the stove-pipe, and in which such wire is free to be partially rotated, substantially as specified.

Signed by me this 21st day of December, A. D. 1883.

SAMUEL SMYTH.

Witnesses:

GEO. S. FERRIS,
G. B. THOMPSON.