

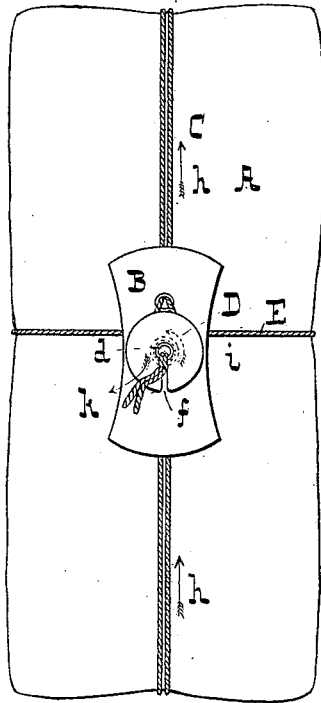
(No Model.)

T. E. LEWIS.
PACKAGE TIE.

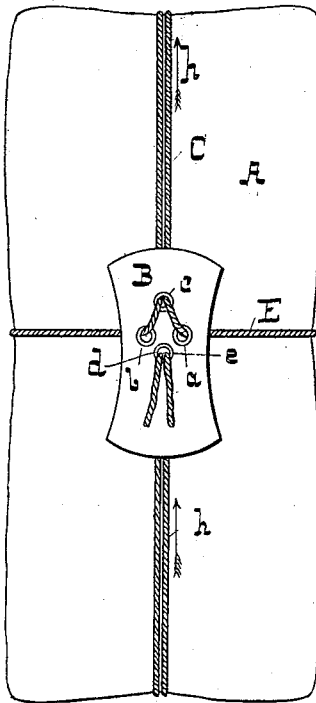
No. 303,528.

Patented Aug. 12, 1884.

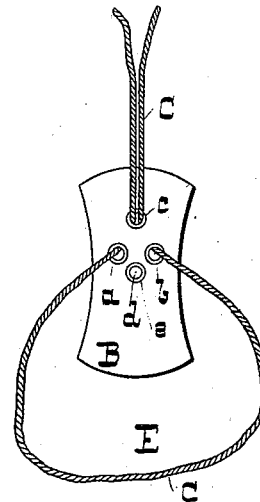
- FIG I -



- FIG II -



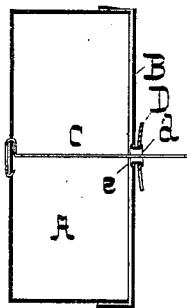
- FIG III -



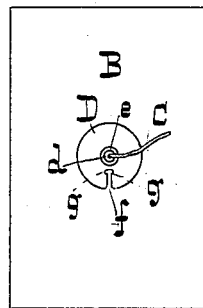
- FIG IV -



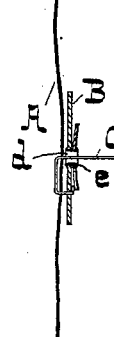
- FIG V -



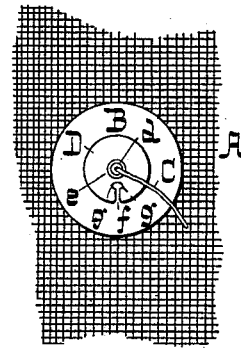
- FIG VI -



- FIG VII -



- FIG VIII -



- WITNESSES -

Paul Fisher
Chas B Cassidy

- INVENTOR -

Thomas E. Lewis,
by E. H. Howard,
att'y -

UNITED STATES PATENT OFFICE.

THOMAS E. LEWIS, OF VICKSBURG, MISSISSIPPI.

PACKAGE-TIE.

SPECIFICATION forming part of Letters Patent No. 303,528, dated August 12, 1884.

Application filed June 6, 1884. (No model.)

To all whom it may concern.

Be it known that I, THOMAS E. LEWIS, of Vicksburg, county of Warren, and State of Mississippi, have invented certain Improvements in Package-Ties, of which the following is a specification.

This invention relates to a device to be applied to the outside of a package to secure the ends of the fastening-cord, and upon which may be printed any suitable matter to indicate the character of the contents of the package, as will hereinafter fully appear.

In the drawings, forming a part hereof, Figure I is a top view of a package provided with the invention. Fig. II is a similar view with a part of the invention removed. Fig. III is a rear view of the fastening device and cord. Fig. IV is a longitudinal section of the fastening device. Figs. V and VI are respectively a sectional and an exterior view of a paper box provided with the invention. Figs. VII and VIII illustrate the attachment of the invention to the bagging of a bale.

A is the package, which in Figs. I and II is shown as a small parcel, and in Figs. V and VI as a paper box.

B is a plate, preferably formed of pasteboard, and of such size as will admit of a description of the contents of the package being printed thereupon. In Figs. I, II, III, IV, VII, and VIII this plate is made entirely independent of the package, while in Figs. V and VI the said plate consists of the lid of the box.

C is the securing-cord.

In Figs. I, II, III, and IV the plate B is provided with eyeleted perforations, (represented by *a*, *b*, *c*, and *d*,) and the eyelet *c* in the central perforation, *d*, serves to secure to the plate B the disk D. This disk, which is on the front of the plate B, has a slot, *f*, extending from its periphery to near the flange of the eyelet *c*, and this slot has preferably the depressions *g* at its inner end, as shown particularly in Fig. VI.

By referring to Fig. III it will be seen that in applying the invention to a package the ends of the securing-cord C are first passed through the eyeleted holes *a* and *b* from the rear side of the plate B, and then both ends

returned to the rear side through the hole *c*. In this operation a loop, E, is formed, in which the package A is placed. The two parts of the securing-cord are then carried around the package, as shown by the arrows *h* in Figs. I and II, and brought through the central hole, *d*, as shown particularly in Fig. II, in which figure the front disk, D, is not shown. The two parts of the cord C are next passed into the slot *f* and carried around the eyelet *c*, underneath the disk D, as indicated by the arrow *i*, and then brought out, as shown by the arrow *k*, and drawn tightly, which completes the fastening. The depression *g* in the slot *f* serves to give space for the cords, and tends to prevent the same again entering the straight portion of the slot.

In Figs. V and VI a wire is employed instead of a cord, and it is attached to the bottom of the box A. In this construction the holes *a*, *b*, and *c* are not required, as the wire passes directly through the hole *d*. In Figs. VII and VIII the wire is fastened to the baling material, and also to the plate B, which serves to hold the said plate from turning.

It will be understood that the principal object of the invention is to provide means for the final fastening of the securing-cord C. Consequently, in all the various constructions shown in the drawings, the central eyelet, *c*, and the slotted disk D are employed; and while in Figs. V and VI the plate B is a part of the package-covering, its office is practically the same as when the plate is employed in addition to the package.

I claim as my invention—

1. In a package-tie, a device to secure the ends of a cord, which consists of the plate B, connected with the disk D, which is fastened to the said plate by means of an eyelet, and provided with the slot *f*, substantially as specified.

2. In combination with the plate B, the eyelet *c* and disk D, the said disk having the slot *f* and depressions *g*, substantially as specified.

THOMAS E. LEWIS.

Witnesses:

ALF. B. PITTMAN,
S. W. PITTMAN.