

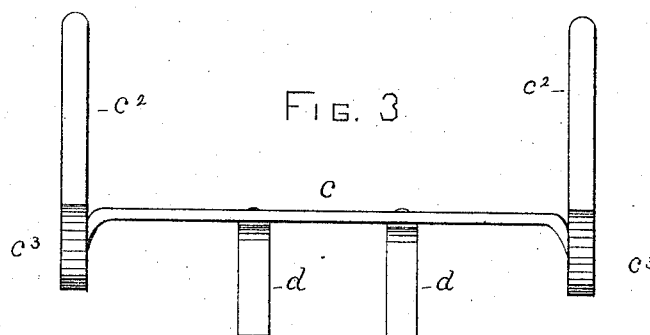
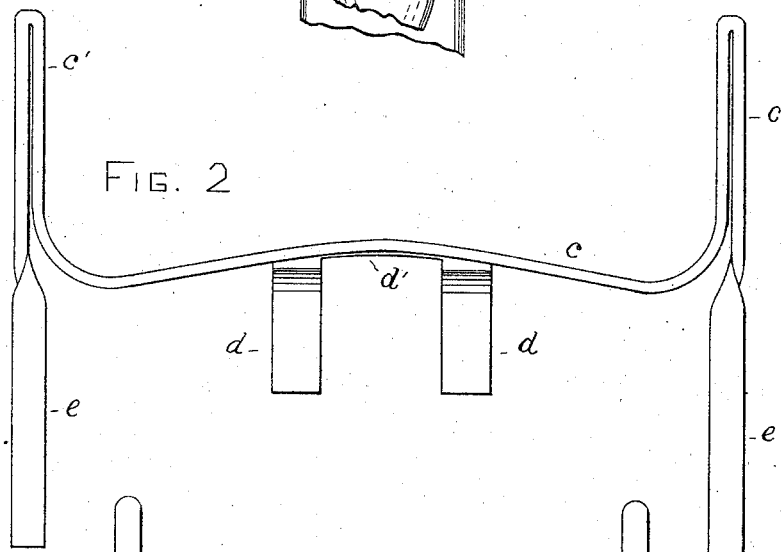
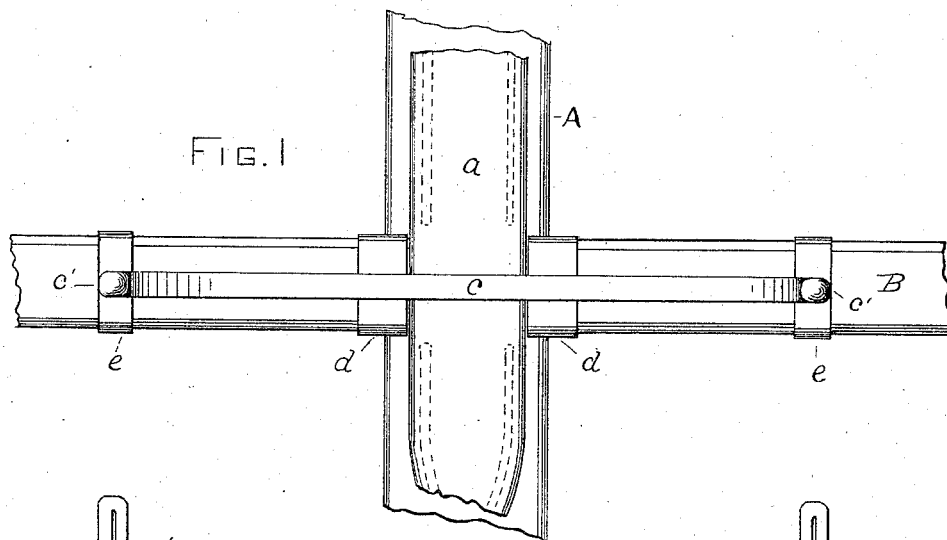
(No Model.)

L. D. DE MARS.

REIN SUPPORT.

No. 305,436.

Patented Sept. 23, 1884.



WITNESSES:

Wm. Blackburn

Orlando H. Beck

INVENTOR:

Louis D. de Mars

By P. H. Gunchel

Attorney

UNITED STATES PATENT OFFICE.

LOUIS D. DE MARS, OF MINNEAPOLIS, MINNESOTA.

REIN-SUPPORT.

SPECIFICATION forming part of Letters Patent No. 305,436, dated September 23, 1884.

Application filed June 17, 1884. (No model.)

To all whom it may concern:

Be it known that I, LOUIS D. DE MARS, a citizen of the United States, and a resident of Minneapolis, in the county of Hennepin and State of Minnesota, have invented a certain new and useful Improvement in Rein-Supports for Harness; and I hereby declare that the following is a full, clear, and exact description of my invention, reference being had to the accompanying drawings.

My invention relates to means for supporting the driving-reins of harness over the horse's back; and it consists of a light metal attachment provided with two projections for supporting the reins, and means for clamping to the hip-straps.

The object of the invention is to enable the reins to be kept from slipping down at the sides of the horse when the reins are not constantly held tightened.

In the drawings, Figure 1 is a top view of the device and of the portion of harness to which it is attached. Fig. 2 is a side view of the device, and Fig. 3 a side view showing a modified form of the device.

A represents a portion of the back-strap of the harness, and B the hip-strap connected with the back-strap through the loop formed by the layer *a*.

C is a piece of round or somewhat flattened metal, having its ends flattened into thin plates, as *e e*, and bent at a suitable distance from the flattened ends, substantially as shown in Fig. 2, to form projections nearly at right angles to the metal rod, and the flattened portion of the ends made to project on the opposite side.

d d are thin strips of the flexible metal extending on either side of the rod *c*, and fastened to it at the under side, or side on which the ends *e e* project. The parts *d d* may be projections from a plate, *d'*, and the plate brazed or otherwise fastened to the middle of the rod; or they may be two separate pieces and separately fastened to the rod. They should be of sufficient length to be bent each half-way round the hip-strap, their ends meeting.

The device can be attached by placing it with its middle over the back-strap and ends extending along the hip-straps, and bending

the plates *d* around the latter strap close to the back-strap, to prevent slipping, and bending the flat ends *e e* entirely around the hip-straps. All of the parts should be pliant, so that the device may be attached equally well to a round or flat strap, and so that it can be bent to the desirable shape, when attached, to conform with the shape of the animal's rump. Thus constructed, it may be attached and removed at pleasure.

In Fig. 3 is shown a modification of the invention adapted for use with round hip-straps. A flattened rod of flexible metal is bent about two inches from each end to form round loops *c' c'*, projecting at right angles at one side of the rod, while the ends *c' c'* are made to extend on the opposite side, to form projections for supporting the reins. The clamps *d d* may be riveted or fastened, as heretofore described, to the rod. In attaching this form of the device the ends of the hip-straps must be passed through the loops *c' c'*, and the parts *d d* then bent around the strap, as heretofore described.

In using the invention, when the reins are not tightly drawn they may be placed within the projections *c' c'* or *c' c'*, and thus prevented from slipping down to be caught by the projecting parts of the harness at the horse's side or by the horse's tail, and are thus kept free and in position to be tightened by the driver when occasion demands.

Having fully described my invention, what I claim, and desire to secure by Letters Patent, is—

1. A rein-support consisting of bar *c*, guides *c' c'*, flattened ends *e e*, and flexible clasps *d d*, substantially as and for the purpose set forth.

2. The combination, with the back-strap and hip-straps of harness, of a rein-supporting attachment consisting of the metal rod *c*, bent to form loops *c' c'*, and projecting ends *c' c'* for supporting the reins, and means, as described, for attaching to the hip-straps, substantially as set forth.

LOUIS D. DE MARS.

Witnesses:

JULIUS E. MINER,
WILLIS C. HOBART.