

(No Model.)

H. GRÜNDLER.

ADJUSTABLE CURTAIN CORNICE.

No. 306,244.

Patented Oct. 7, 1884.

Fig. 1.

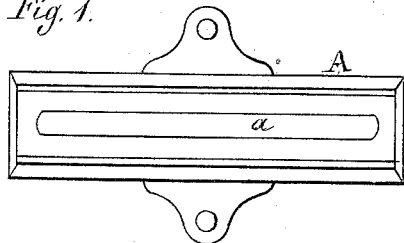


Fig. 3.

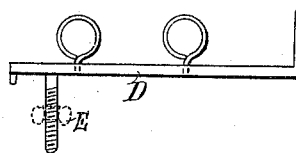


Fig. 2.

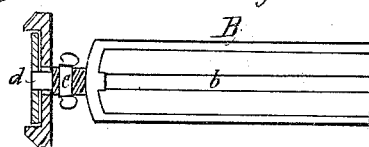


Fig. 2<sup>a</sup>

Fig. 4.

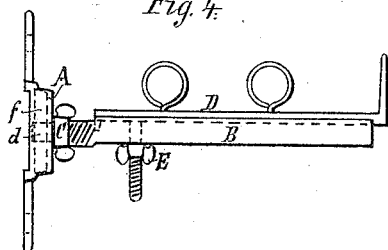


Fig. 3<sup>a</sup>

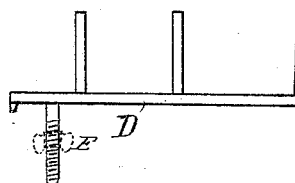


Fig. 5.

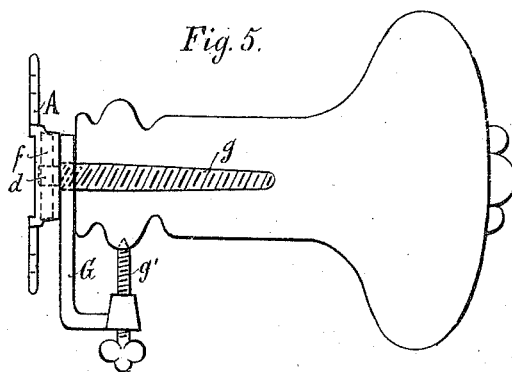
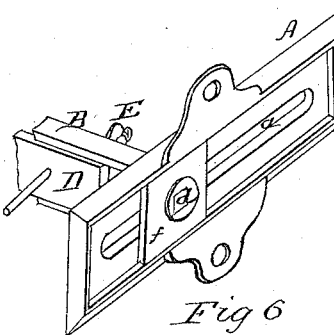


Fig. 6



Witnesses

James O'Neill  
J. H. Wildman

Inventor.

Hilarius Gründler  
by Connelley & Co.  
Attys

# UNITED STATES PATENT OFFICE.

HILARIUS GRÜNDLER, OF FRANKFORT-ON-THE-MAIN, GERMANY, ASSIGNOR  
TO WILHELM ZUNZ, OF SAME PLACE.

## ADJUSTABLE CURTAIN-CORNICE.

SPECIFICATION forming part of Letters Patent No. 306,244, dated October 7, 1884.

Application filed April 15, 1884. (No model.)

*To all whom it may concern:*

Be it known that I, HILARIUS GRÜNDLER, a citizen of Germany, residing at Frankfort-on-the-Main, in the Empire of Germany, have invented certain new and useful Improvements in Adjustable Curtain-Cornices and Curtain Knob-Pins; and I do hereby declare the following to be a full, clear, and exact description of the invention, such as will enable others skilled in the art to which it appertains to make and use the same, reference being had to the accompanying drawings, in which—

Figure 1 is a front view of the base or wall plate. Fig. 2 is a face view of a sliding piece fitting said plate. Fig. 2<sup>a</sup> is a side view of a projecting arm or bracket adjustable on the base-plate. Figs. 3 and 3<sup>a</sup> are side views of an adjustable slide fitting the bracket shown in Fig. 4. Fig. 4 is a side view showing the elements of Figs. 1, 2, 2<sup>a</sup>, 3, 3<sup>a</sup> connected together. Fig. 5 is a side view illustrating a modification of my invention. Fig. 6 is a perspective view of my improvement.

This fastener consists of a flat metal box, A, Fig. 1, having a horizontal slit, *a*, in the middle, destined to take up the movable piece B, Fig. 2<sup>a</sup>, the square extremity of which, fitting to the hole *f'* of the small plate *f*, is riveted to the latter, and glides horizontally to the right or left in the slit, (plate *f* doing the same within the interior of the box,) and can be fixed in its desired position by the thumb-nut C. The piece B, which has equally a slit, *b*, takes up a second piece, D, Figs. 3 and 3<sup>a</sup>, which, by means of a screw and thumb-nut, E, can be placed and fixed at the wanted

distance from the wall. The advantage of the system is that at every change of the inhabitants of an apartment the whole contrivance can remain fastened to the wall, because it will suit as well the parties entering into as those removing from the apartment, while now, because of the different lengths and forms of the curtain-cornices, people are accustomed to pull the pins out of the wall and to take them to their new abode. The consequence is the gradual destruction of the wall and of the paper, a very common and notorious inconvenience. The same box A serves for the knob-pin fastener, Fig. 5; but the place of the piece B is taken there by a long screw, *g*, on which the knob is screwed. Said screw *g* is fastened to the box identically like the piece B.

In order to give more solidity to the knob in case its fillet should be used up or be too large, the small piece G, forming a knee, is suspended upon the screw *g*, and by means of the binding-screw *g'* serves to prop the knob.

I claim—

The combination, with the box A, furnished with the horizontal slit *a*, of the piece B, having a slit, *b*, and supporting the movable piece D, and the thumb-nuts C and E, as described and shown, and for the purposes set forth.

In testimony whereof I affix my signature in presence of two witnesses.

HILARIUS GRÜNDLER.

Witnesses:

F. VOGELER,  
I. GRUND.