

(No Model.)

H. B. YARYAN.

FIFTH WHEEL.

No. 306,371.

Patented Oct. 7, 1884.

Fig. 1.

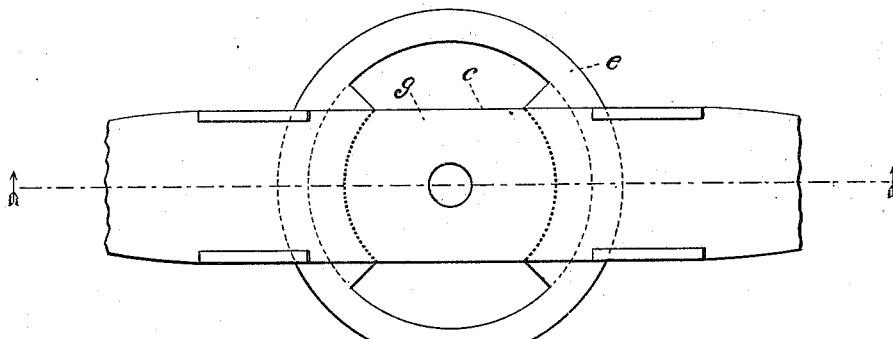


Fig. 2.

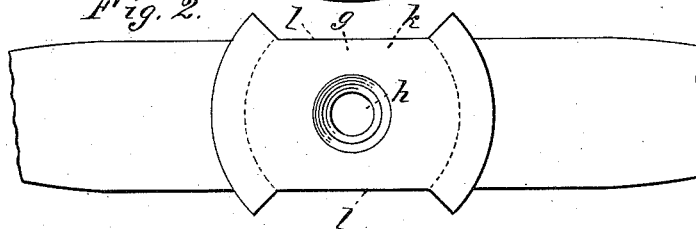


Fig. 3.

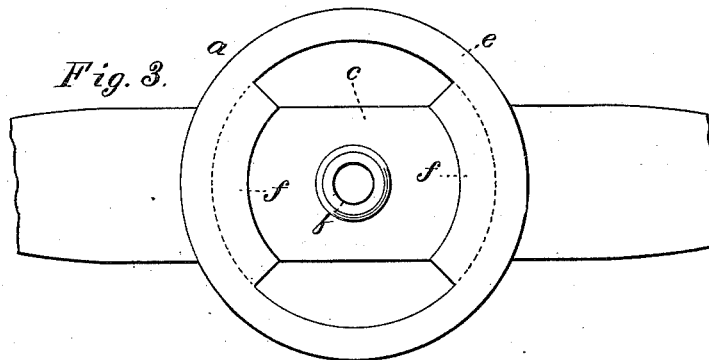
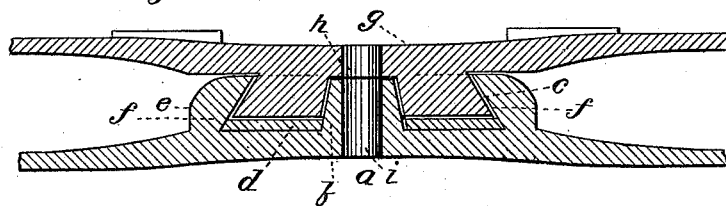


Fig. 4.



WITNESSES

Villette Anderson.
Theo. Munger.

INVENTOR

Harvey B. Yaryan.
by Anderson Smith
his ATTORNEYS

UNITED STATES PATENT OFFICE.

HARVEY B. YARYAN, OF CRAWFORDSVILLE, INDIANA, ASSIGNOR OF TWO-THIRDS TO D. W. GERARD, OF SAME PLACE, AND W. T. ROYSE, OF INDIANAPOLIS, INDIANA.

FIFTH-WHEEL.

SPECIFICATION forming part of Letters Patent No. 306,371, dated October 7, 1884.

Application filed October 16, 1883. (No model.)

To all whom it may concern:

Be it known that I, HARVEY B. YARYAN, a citizen of the United States, residing at Crawfordsville, in the county of Montgomery and State of Indiana, have invented certain new and useful Improvements in Fifth-Wheels; and I do declare the following to be a full, clear, and exact description of the invention, such as will enable others skilled in the art to which it appertains to make and use the same, reference being had to the accompanying drawings, and to letters or figures of reference marked thereon, which form a part of this specification.

Figure 1 of the drawings is a representation of this invention, and is a top view. Fig. 2 is a bottom view of upper portion. Fig. 3 is a top view of the under portion. Fig. 4 is a vertical section taken in line with the broken line shown on Fig. 1.

This invention has relation to fifth-wheels for four-wheeled vehicles; and it consists in the construction and novel arrangement of devices, as will be hereinafter fully described, and particularly pointed out in the claim appended.

Referring by letter to the accompanying drawings, *a* designates the base-plate of the fifth-wheel, which is to be secured in any suitable manner to the forward axle of the vehicle, or to the evener, double-tree, or single-tree, or other place to which it is applicable. This base-plate *a* has a central boss, *b*, around which is a seat, *c*, for the reception of a leather washer, *d*. A ring, *e*, is secured to or formed with the base-plate *a*, the boss *b* being its axis. At diametrically-opposite points of the ring *e*, and on its inner periphery, are two segmental under-beveled arcs, *f f*, the bevels extending from their inner curved edges from above downward and outward. The bolster-plate *g* has a central hole, *h*, which passes into the thimble *h* in line with the hole *i* in the boss and base-plate, for the passage of the king-bolt. The thimble *h* is tapering from below upward in the center piece, *k*, to receive the boss when the two parts of the fifth-wheel are in engagement. The center piece, *k*, on the under side

of the bolster-plate has vertical sides *l* and arc-shaped ends, which project beyond the sides, and are beveled from below inward and upward, to correspond to the under bevels of the arcs in the ring. The outline of the center piece conforms to the outline of the opening in the ring, and it is dropped to place upon the boss through the opening in the ring, and the bolster-plate is then turned into alignment with the base-plate, when the fifth-wheel is in its normal position. From this position it can be turned in either direction and will not lose its seat. This fifth-wheel does not occupy much space and does not wear rapidly. The washer may be renewed when worn with but little trouble, and it saves the wear of the metal.

The device is cheap and simple, and may be applied to all vehicles, as well as to double-trees and single-trees.

Having thus fully described my invention, what I claim as new, and desire to secure by Letters Patent, is—

The fifth-wheel herein described, consisting of the base-plate *a*, having the two segmental under-beveled arcs *f f*, and the central boss, *b*, rising to the same horizontal plane, and provided with the central hole, *i*, the bolster-plate *g*, having the central hole, *h*, and the center piece, *k*, provided on its under side with vertical sides *l* and arc-shaped ends, which project beyond the sides, as shown, and are beveled parallel from below inward and upward, to correspond to the under bevels of the arcs in the ring and the outer wall of the boss *b*, whereby the under side of the said bolster-plate is allowed to bear on the top face of the boss *b*, and an interspace formed between its depending beveled arcs and the base-plate *a* for the reception of the washer *d*, substantially as specified.

In testimony whereof I affix my signature in presence of two witnesses.

HARVEY B. YARYAN.

Witnesses:

D. W. GERARD,
FISHER DOHERTY.