

(No Model.)

T. SCHMIDT.
PAPER PACKAGE BOX.

No. 306,532.

Patented Oct. 14, 1884.

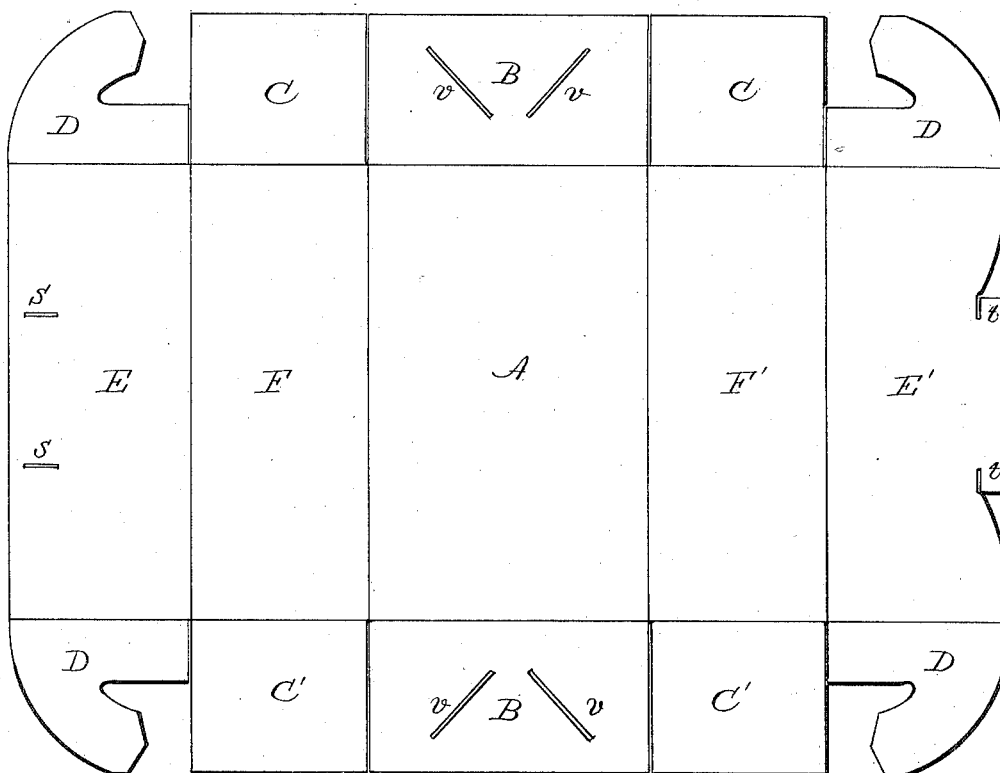


Fig. 1

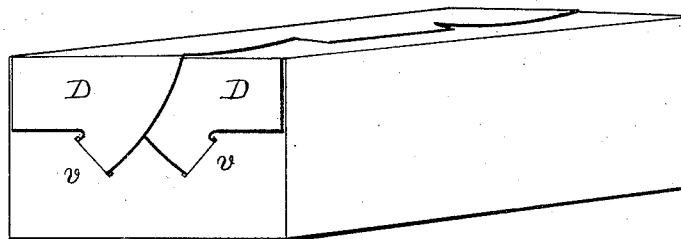


Fig. 2

WITNESSES:

Louis S. Reibold
Leopold Leibold

INVENTOR

Theodore Schmidt
BY *R. Pielering*

ATTORNEY

UNITED STATES PATENT OFFICE.

THEODORE SCHMIDT, OF DAYTON, OHIO, ASSIGNOR OF TWO-THIRDS TO
JOEL O. SHOUP AND ROBERT L. HUGHES, BOTH OF SAME PLACE.

PAPER PACKAGE-BOX.

SPECIFICATION forming part of Letters Patent No. 306,532, dated October 14, 1884.

Application filed April 21, 1884. (No model.)

To all whom it may concern:

Be it known that I, THEODORE SCHMIDT, a citizen of the United States residing at Dayton, in the county of Montgomery and State of Ohio, have invented a certain new and useful Improvement in Paper Package-Boxes; and I do hereby declare that the following is a full, clear, and exact description of the invention, which will enable others skilled in the art to which it appertains to make and use the same, reference being had to the accompanying drawings, and to the letters of reference marked thereon, which form a part of this specification.

My invention relates to improvements in paper package-boxes of oblong shape having ordinary slots and tucks near the center of the top thereof, and curved tucks at the ends of the top folds entering diagonal slots in the end folds as a fastening constitute the novel feature of the invention.

The package-box is illustrated in the accompanying drawings, in which Figure I is a view of the blank. Fig. II is a perspective of the package-box.

Like letters designate like parts throughout the several views.

The bottom A is of oblong shape, the edges being creased to bend or fold on a line. The end folds, B B, are a longitudinal extension of the same, and both of these folds have oblique slots *v v* extending outwardly from the inner edge of the same.

F F' are side folds creased at their junction with the top folds, and have an extension corresponding to the end folds, from which they are separated by cutting through the paper, and are creased on a line with the end folds, thereby forming the side laps or folds, C C'. The folds E E' form the top of the box. Slots *s s* are cut in the left fold, and the tucks *t t* are formed on the opposite fold. These, united,

form the top fastening at the center of the top of the box.

D D constitute the external folds and tucks, they being creased at the junction with the top folds. The tuck ends are made pointed for convenience in entering the same, and the edges are circular, the center of the curve being that of the longitudinal and transverse intersection of the creases. From the outer end of crease to the tucks *t* is an arc of a circle, and this portion is an essential part of the tucks. A portion of the end folds, besides the tucks, is cut away from the adjoining side end flaps. When the blank is formed as described, the side folds are bent up, the end flaps turned in, the left top fold is bent down, the right on the same, and the tucks are entered into the slots, thus fastening the box transversely. The end folds are then bent up, the top end folds bent down, and during the act of bending the same down the curved tucks are made to enter the diagonal slots of the central end fold.

To open the end of the box conveniently, the end of the top fold is raised, thereby easily withdrawing the tucks; otherwise to remove them would bend the paper injuriously.

Having fully described my invention, what I desire to secure by Letters Patent is—

In a paper package-box having side folds with laps C C, and top folds with slots *s s* and tucks *t t*, as specified, end folds, B B, having diagonal slots *v v*, and curved tucks of the top folds entering said slots *v v* as an end fastening, substantially as shown and described.

In testimony that I claim the foregoing as my own I affix my signature in presence of two witnesses.

THEODORE SCHMIDT.

Witnesses:

B. PICKERING,
SUMNER T. SMITH.